

## Features

- For use with the 2"x6" in-wall tank and carrier system
- Available in a variety of colors and finishes to match the toilet or faucet finish
- Dual-flush actuator offers a choice of 0.8 or 1.6 gpf (3.0 or 6.0 lpf)
- Large flush actuator plate opening can be removed for easy access to inner tank
- Eligible for consumer rebates in some municipalities

## Installation

- See installation guide and installation video for more detailed information

## Recommended Products/Accessories

K-6291 Wall-Hung Toilet Cast Iron Waste Pipe  
K-6284 2" x 6" In-wall tank and carrier system  
K-23723 Faucet cleaner



## Codes/Standards





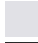


None Applicable

## KOHLER® Toilets and Seats Limited Warranty

See website for detailed warranty information.

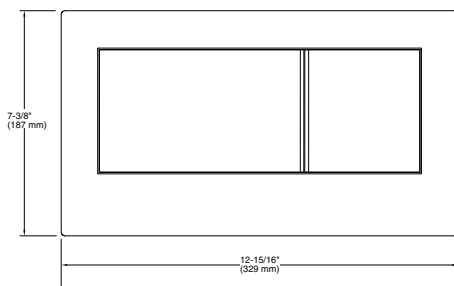
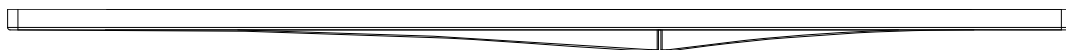
## Available Colors/Finishes

*Color tiles intended for reference only.*

Color	Code	Description
	CP	Polished Chrome
	SN	Vibrant® Polished Nickel
	BN	Vibrant® Brushed Nickel
	BV	Vibrant® Brushed Bronze
	0	White
	7	Black Black™
	TT	Vibrant Titanium



**Veil®**  
Flush Actuator Plate  
**K-6298**



**Technical Information**

All product dimensions are nominal.

Material: Plastic

1-800-4KOHLER (1-800-456-4537)

Kohler Co. reserves the right to make revisions without notice to product specifications.

For the most current Specification Sheet, go to [www.kohler.com](http://www.kohler.com) USA or [www.kohler.ca](http://www.kohler.ca) Canada

6-11-2024 20:11 - US

THE BOLD LOOK  
OF **KOHLER®**