



THOUGHTFUL DESIGN.
UNCOMPROMISING PERFORMANCE.

STERLING
A KOHLER COMPANY

THE BOLD LOOK
OF **KOHLER**®

PRODUCT ATTRIBUTES

BOWL HEIGHTS



Standard Height
Traditional height ideal for many users

Comfort Height.
Makes standing and sitting easier

Tall Height
Our tallest toilet, for accessibility and ease of use

BOWL SHAPES



Elongated Bowl
Provides added room and comfort for seating

Round-Front Bowl
A good solution for small spaces

TRAPWAY STYLES



Exposed Trapway
Traditionally designed, exposed trapways can be seen from the side of the toilet

Concealed Trapway
Hides trapway lines for a smooth surface that's easy to wipe clean

Skirted Trapway
Offers an easy-to-clean, smooth surface from front to back, hiding all trapway lines

ROUGH-IN



Most bathrooms have a standard 12" rough-in (the measurement between the wall and outlet pipe). We also offer 10" and 14" options.

WATERSENSE®



WaterSense-labeled toilets meet strict EPA flushing guidelines, including using at least 20 percent less water than 1.6-gallon toilets.

INNOVATIVE TECHNOLOGIES

REVOLUTION 360®



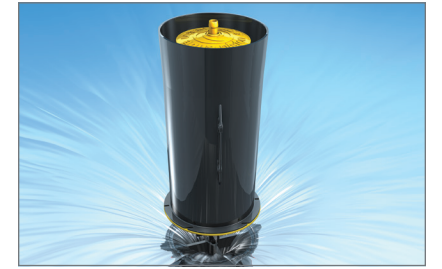
Toilets with Revolution 360 swirl flushing technology with CleanCoat™ surface treatment stay clean twice as long as conventional toilets.*

CONTINUOUSCLEAN



KOHLER® toilets with the ContinuousClean system and CleanCoat stay clean five times longer than conventional toilets.†

AQUAPISTON®



The patented AquaPiston flush valve harnesses the force of gravity to send 360 degrees of water into the system—increasing the power of the flush without wasting water.

CLASS FIVE®



Class Five flushing technology offers virtually plug-free performance and rinsing power for a clean bowl.

OMNIDIRECTIONAL LEVELING



The patented two-bolt and gasket system allows for greater adjustability but provides the same security as a standard three-bolt installation.

THREE-BOLT INSTALLATION



Three preinstalled encapsulated bolts save installation time and provide more options for adjustment.

READYLOCK®



Making it easy to install a skirted toilet, our innovative installation system doesn't require drilling, caulk, or special tools.

CLEAN CAPS®



Available on KOHLER concealed trapway toilets—also available as a kit—Clean Caps low-profile bolt caps make it easier to keep the toilet clean.

PRO FORCE® PLUS



Pro Force Plus flushing technology features a jetted bowl, delivering greater flushing power than previous models and virtually plug-free performance.

*KOHLER toilets with CleanCoat compared to KOHLER toilets without CleanCoat based on consumer perception study.
†KOHLER toilets with ContinuousClean compared to KOHLER toilets without ContinuousClean based on consumer perception study and bacterial counts.

COMPARISON

No one knows toilets quite like Kohler. For over 145 years, Kohler has built a proud legacy of craftsmanship and innovation as we pushed the limits of design, style, and technology. Our award-winning toilets are easy to install, proven to last, and built to impress. Maybe that's why professional plumbers recommend KOHLER® toilets more than any other brand.* And together with Sterling, a Kohler company, we firmly stand behind the toilets we manufacture.



“Superior quality, workmanship, and performance.”

— Robert D., Professional Plumber†



	Windham	Stinson	Kingston	Wellworth	Highline	Cimarron	Corbelle
Brand	STERLING	STERLING	KOHLER	KOHLER	KOHLER	KOHLER	KOHLER
Flushing System (Tank)	ProForce Plus	ProForce Plus	Class Five	Class Five/Dual-Flush	Class Five/Dual-Flush	AquaPiston	AquaPiston
Flushing System (Bowl)	Box Rim	Box Rim	Box Rim	Box Rim	Box Rim	Revolution 360	Revolution 360
Rough-In	10"/12"/14"	12"	12"	12"/14"	10"/12"/14"	12"	10"/12"/14" (10" and 14" Require Kit)
Toilet Type	Two-Piece	Two-Piece	Two-Piece	Two-Piece	Two-Piece	One-Piece/Two-Piece	Two-Piece
Bowl Height	Standard/Comfort Height	Comfort Height	Standard/Comfort Height	Standard	Comfort Height/Tall Height	Comfort Height	Comfort Height
Bowl Shape	Round-Front/Elongated	Elongated	Elongated	Round-Front/Elongated	Round-Front/Elongated	Round-Front/Elongated	Elongated
Tank/Bowl Connection	Three-Bolt Installation	Three-Bolt Installation	Three-Bolt Installation	Three-Bolt Installation	Three-Bolt Installation	Two-Bolt Omnidirectional Leveling	Three-Bolt Installation
Gallons Per Flush (GPF)	1.28/1.6	1.28	1.28	1.1 or 1.6/1.28/1.6	1.0/1.1 or 1.6/1.28/1.6	1.28/1.6	1.28
Trapway	Exposed	Exposed	Exposed	Exposed	Exposed/Concealed	Exposed/Concealed/Skirted	Skirted
Additional Technologies		Floor Saver				ContinuousClean	ContinuousClean

*Based on April 2020 survey.
†Compensated testimonial.



WINDHAM™

Windham toilets are engineered to deliver exceptional performance and designed for functionality and style.

Pro Force® Plus Technology

Pro Force Plus flushing technology features a jetted bowl, delivering greater flushing power than previous models and virtually plug-free performance

2 1/8" Fully Glazed Trapway

A fully glazed trapway helps ensure a strong, complete flush to reduce plugging

Easy Three-Bolt Installation

Three preinstalled encapsulated bolts save installation time and provide more options for adjustment

Comfort Height®

Chair-height option meets ADA standards while making sitting down and standing up easier

Water-Efficient

1.28 gpf models meet strict WaterSense® guidelines and can save up to 2,383 gallons of water per year compared to a 1.6 gpf toilet*



PRO FORCE PLUS



THREE-BOLT INSTALLATION

*Based on a household of four, each flushing 5.1 times per day, 365 days per year.

SKU	Tank SKU	Bowl SKU	Bowl Height	Bowl Shape	Rough-In	GPF	ADA	Right-Hand Trip Lever Option
402320	402362	403017	Standard	Round-Front	12"	1.28		•
402321	402362	403217	Standard	Elongated	12"	1.28		•
402322	402362	403317	Comfort Height	Elongated	12"	1.28	•	•
402323	402363	403017	Standard	Round-Front	12"	1.6		•
402324	402363	403217	Standard	Elongated	12"	1.6		•
402369	402365	403317	Comfort Height	Elongated	14"	1.28	•	
402210	404515	404210	Standard	Elongated	10"	1.6		
402325	402363	403317	Comfort Height	Elongated	12"	1.6	•	•
402367	402365	403017	Standard	Round-Front	14"	1.28		
402368	402365	403217	Standard	Elongated	14"	1.28		

To learn more about WaterSense-labeled toilets, visit EPA.gov/WaterSense.

STINSON®

With an efficient, powerful flush, the Stinson toilet delivers consistency and understated elegance.

Pro Force® Plus Technology

Pro Force Plus flushing technology features a jetted bowl, delivering greater flushing power than previous models and virtually plug-free performance

2 1/8" Fully Glazed Trapway

A fully glazed trapway helps ensure a strong, complete flush to reduce plugging

Easy Three-Bolt Installation

Three preinstalled encapsulated bolts save installation time and provide more options for adjustment

Comfort Height®

Chair-height option meets ADA standards while making sitting down and standing up easier

Floor Saver® Footprint

The Floor Saver footprint helps cover the old footprint left by many two-piece toilets



PRO FORCE PLUS TECHNOLOGY



THREE-BOLT INSTALLATION

SKU	Tank SKU	Bowl SKU	Bowl Height	Bowl Shape	Rough-In	GPF	ADA	Right-Hand Trip Lever Option
402396	404558	403316	Comfort Height	Elongated	12"	1.28	•	•

WaterSense®-labeled toilets use at least 20% less water than standard 1.6-gallon toilets while still meeting strict flushing performance guidelines.

KINGSTON™

Designed for commercial and hospitality markets, the Kingston two-piece toilet provides uncompromising performance with ease of cleaning and maintenance.

Class Five® Technology

Class Five flushing technology offers virtually plug-free performance and rinsing power for a clean bowl

2½" Fully Glazed Trapway

A fully glazed trapway helps ensure a strong, complete flush to reduce plugging

Easy Three-Bolt Installation

Three preinstalled encapsulated bolts save installation time and provide more options for adjustment

Comfort Height®

Chair-height option meets ADA standards while making sitting down and standing up easier

Water-Efficient

1.28 gpf models meet strict WaterSense® guidelines and can save up to 2,383 gallons of water per year compared to a 1.6 gpf toilet*



CLASS FIVE



THREE-BOLT
INSTALLATION

*Based on a household of four, each flushing 5.1 times per day, 365 days per year.

SKU	Tank SKU	Bowl SKU	Bowl Height	Bowl Shape	Rough-In	GPF	ADA	Right-Hand Trip Lever Option	Optional Upgrade
K-25077	K-25100	K-25076	Comfort Height	Elongated	12"	1.28	•	•	Antimicrobial Finish*
K-25087	K-25100	K-25086	Standard	Elongated	12"	1.28		•	Antimicrobial Finish*
K-25097	K-25100	K-25096	Standard	Round-Front	12"	1.28		•	Antimicrobial Finish*

To learn more about WaterSense-labeled toilets, visit EPA.gov/WaterSense.

*Optional upgrade antimicrobial finish inhibits the growth of mold-, mildew-, stain-, and odor-causing bacteria on the fixture surface. This product does not protect users against bacteria, viruses, or other disease organisms. Always clean and wash this product thoroughly before and after each use.

WELLWORTH®/HIGHLINE®

Designed for style and versatility, these toilets are available in a wide range of configurations to meet a variety of needs.

Class Five® Technology

Class Five flushing technology offers virtually plug-free performance and rinsing power for a clean bowl

Dual-Flush

Dual-flush models feature an innovative trip lever that combines water savings with a powerful flush by offering the choice of 1.1 or 1.6 gallons per flush

Easy Three-Bolt Installation

Three preinstalled encapsulated bolts save installation time and provide more options for adjustment



WELLWORTH

SKU	Tank SKU	Bowl SKU	Bowl Height	Bowl Shape	Rough-In	GPF	Right-Hand Trip Lever Option	Insuliner* Option
K-3947	K-4841	K-4197	Standard	Round-Front	14"	1.28	•	•
K-3948	K-4841	K-4198	Standard	Elongated	14"	1.28	•	•
K-3977	K-4468	K-4197	Standard	Round-Front	12"	1.6	•	
K-3978	K-4468	K-4198	Standard	Elongated	12"	1.6	•	
K-3987	K-4458	K-4197	Standard	Round-Front	12"	1.1/1.6	•	
K-3988	K-4458	K-4198	Standard	Elongated	12"	1.1/1.6	•	
K-3997	K-4467	K-4197	Standard	Round-Front	12"	1.28	•	•
K-3998	K-4467	K-4198	Standard	Elongated	12"	1.28	•	•

WaterSense®-labeled toilets use at least 20% less water than standard 1.6-gallon toilets while still meeting strict flushing performance guidelines.

*Insuliner® tank liner minimizes condensation on the tank when exposed to high humidity.

Easy to Clean

Available exclusively on K-76301, the concealed trapway and Clean Caps®—our low-profile toilet floor bolt caps—make it easy to keep the toilet clean

Comfort Height®

Chair-height option meets ADA standards while making sitting down and standing up easier

Tall Height Bowl

Our tallest toilet—two inches taller than our Comfort Height models—offers the ultimate in accessibility and ease of use

Easy to Service

A universal replacement gasket fits all KOHLER® canister flush valve toilets. The gasket takes seconds to replace and doesn't require multiple replacement parts

Ideal Retrofit Footprint

Great for remodeling, the toilet base is large enough to cover most existing toilet footprints



CLASS FIVE



THREE-BOLT INSTALLATION



CLEAN CAPS

HIGHLINE

SKU	Tank SKU	Bowl SKU	Bowl Height	Bowl Shape	Rough-In	GPF	ADA	Right-Hand Trip Lever Option	Insuliner* Option	Additional Features
K-3889	K-4467	K-4373	Comfort Height	Elongated	10"	1.28	•	•	•	
K-3949	K-4841	K-4199	Comfort Height	Elongated	14"	1.28	•	•	•	
K-3979	K-4468	K-4199	Comfort Height	Elongated	12"	1.6	•	•		
K-3989	K-4458	K-4199	Comfort Height	Elongated	12"	1.1/1.6	•	•		
K-3999	K-4467	K-4199	Comfort Height	Elongated	12"	1.28	•	•	•	
K-5298	K-5308	K-5297	Comfort Height	Elongated	12"	1.0	•	•		
K-5481	K-4467	K-5393	Comfort Height	Round-Front	12"	1.28	•	•	•	
K-6393	K-4458	K-4373	Comfort Height	Elongated	10"	1.1/1.6	•	•		
K-76301	K-4467	K-80020	Comfort Height	Elongated	12"	1.28	•	•		Concealed Trapway, Clean Caps
K-25224	K-4467	K-22661	Tall	Elongated	12"	1.28		•		

WaterSense®-labeled toilets use at least 20% less water than standard 1.6-gallon toilets while still meeting strict flushing performance guidelines.

*Insuliner, tank liner minimizes condensation on the tank when exposed to high humidity.

THE BOLD LOOK OF KOHLER®

CIMARRON®

With a clean, versatile look, the Cimarron toilet combines flushing performance with graceful curves.

Revolution 360® and CleanCoat™

Available on select models, Revolution 360 technology sends 360 degrees of water through the bowl for complete coverage, and the CleanCoat hydrophobic glaze prevents dirt, grime, and bacteria from sticking to the bowl so it stays clean longer

Easy to Clean

Available exclusively on K-3619, the one-piece design, concealed trapway, and Clean Caps®—our low-profile toilet floor bolt caps—make it easy to keep the toilet clean

Omnidirectional Leveling

The patented two-bolt and gasket system allows for greater adjustability but provides the same security as a three-bolt installation

ReadyLock® Installation System

Making it easy to install a skirted toilet, our innovative installation system doesn't require drilling, caulk, or special tools (available exclusively on K-5310)

ContinuousClean ST Technology

This single-tablet system is mechanically operated, no batteries required. Simply add a single cleaning tablet to automatically dispense cleaning solution for up to six months.



REVOLUTION 360



CLEAN CAPS



OMNIDIRECTIONAL LEVELING



CONTINUOUSCLEAN ST

SKU	Tank SKU	Bowl SKU	Bowl Height	Bowl Shape	Rough-In	GPF	ADA	Right-Hand Trip Lever Option	Revolution 360	ContinuousClean	Additional Features
Two-Piece Toilets											
K-31620	K-31614	K-31588	Comfort Height	Elongated	12"	1.6	•	•	•		
K-31621	K-31615	K-31588	Comfort Height	Elongated	12"	1.28	•	•	•		
K-31624	K-31618	K-31588	Comfort Height	Elongated	12"	1.28	•		•	•	
K-31640	K-31614	K-31589	Comfort Height	Round-Front	12"	1.6	•	•	•		
K-31641	K-31615	K-31589	Comfort Height	Round-Front	12"	1.28	•	•	•		
K-31644	K-31618	K-31589	Comfort Height	Round-Front	12"	1.28	•		•	•	
K-5310	K-4369	K-5309	Comfort Height	Elongated	10"/12"/14"	1.28	•	•			Skirted Trapway
One-Piece Toilets											
K-3619			Comfort Height	Elongated	12"	1.28	•	•			Concealed Trapway, Clean Caps, Slow-Close Seat

WaterSense®-labeled toilets use at least 20% less water than standard 1.6-gallon toilets while still meeting strict flushing performance guidelines.

*10" and 14" rough-in require kit (sold separately).

CORBELLE®

Combining exceptional flushing power with innovative features and an attractive, easy-to-clean design, the Corbelle toilet makes a bold statement of style and cleanliness.

Revolution 360® and CleanCoat™

Revolution 360 technology sends 360 degrees of water through the bowl for complete coverage, and the CleanCoat hydrophobic glaze prevents dirt, grime, and bacteria from sticking to the bowl so it stays clean longer

ContinuousClean XT Technology

ContinuousClean XT is a two-tablet, battery-operated system that features three settings and is designed to automatically dispense cleaning solution for up to one year

Convenient to Clean

The skirted design eliminates the nooks and crannies, making it easier to clean

Comfort Height®

Chair-height seating meets ADA standards while making sitting down and standing up easier

ReadyLock® Installation System

Making it easy to install a skirted toilet, our innovative installation system doesn't require drilling, caulk, or special tools



REVOLUTION 360



CONTINUOUSCLEAN XT



READYLOCK

SKU	Tank SKU	Bowl SKU	Bowl Height	Bowl Shape	Rough-In	GPF	ADA	Right-Hand Trip Lever Option	ContinuousClean
K-3814	K-4143	K-4144	Comfort Height	Elongated	10"/12"/14"	1.28	•	•	
K-5709	K-5711	K-4144	Comfort Height	Elongated	10"/12"/14"	1.28	•		•

WaterSense®-labeled toilets use at least 20% less water than standard 1.6-gallon toilets while still meeting strict flushing performance guidelines.
*10" and 14" rough-in require kit (sold separately).

TOILET SEATS

Quiet-Close™ Toilet Seats

Quiet-Close technology prevents pinched fingers and loud slamming noises by ensuring the seat and lid close slowly and quietly

Nightlight Toilet Seats

Automatic, battery-operated light helps guide you safely and comfortably in the dark

Bidet Toilet Seats

Bidet cleansing toilet seats provide a more hygienic experience and are available in a range of models, from basic units that don't require any electricity to luxurious full-feature models with adjustable seat and water temperature

Heated Seat

A heated seat provides the comfort of a warm seat set exactly to the user's personal preference

Grip-Tight Bumpers

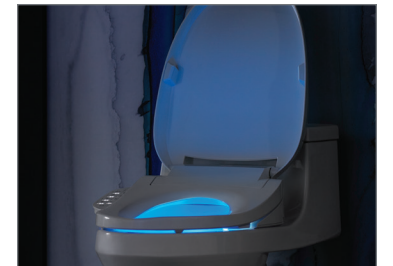
Rubber inserts in the bottom of the seat add security and stability

ReadyLatch® Installation System

The ReadyLatch system creates a more secure installation that prevents the seat from coming loose, while still providing fast and easy removal for cleaning



QUIET-CLOSE TOILET SEATS



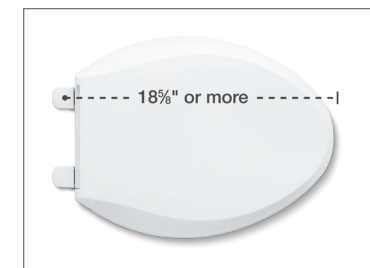
NIGHTLIGHT TOILET SEATS



BIDET TOILET SEATS

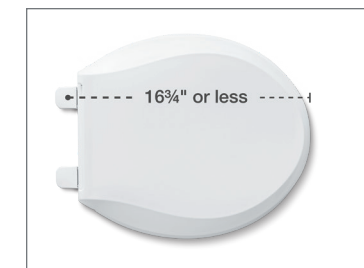


READYLATCH



Elongated Toilet Seats

Fit most residential toilets, including elongated toilets



Round-Front Toilet Seats

Fit round-front toilets

TOILET SEATS



Product Family	Cachet	Cachet Nightlight	Stonewood	Border	PureWarmth
Shape					
Elongated	•	•	•	•	•
Round-Front	•	•	•	•	•
Basic Features					
Quiet-Close	•	•	•	•	•
Grip-Tight Bumpers	•	•		•	•
ReadyLatch	•	•		•	
Premium Features					
Nightlight		•			•
Heated Seat					•
Material					
Plastic	•	•		•	•
Molded Wood			•		
Colors*	0, 96, NY, 95, G9, K4, 58, 7	0, 96, NY, 95, G9, K4, 58, 7	0, 96	0, 96	0, 96

BIDET SEATS



Product Family	Puretide	PureWash	C³-050	C³-155	C³-420	C³-430	C³-455	C³-230
Shape								
Elongated	•	•	•	•	•	•	•	•
Round-Front	•							
Basic Features								
Quiet-Close	•	•	•	•	•	•	•	•
Grip-Tight Bumpers	•	•	•	•	•	•	•	•
Quick-Release	•	•	•	•	•	•	•	•
Premium Features								
Nightlight				•	•	•	•	•
Heated Seat				•	•	•	•	•
Material								
Plastic	•	•	•	•	•	•	•	•
Colors	0, 96	0	0, 96	0, 96	0	0	0, 96	0, 96

For complete product information, visit KOHLER.com.
*Color options vary by SKU. Please visit KOHLER.com for color availability for specific models.

[KOHLER.com/Toilets](https://www.kohler.com/toilets)
[SterlingPlumbing.com](https://www.sterlingplumbing.com)



THE BOLD LOOK
OF **KOHLER**®

Form 16-2121-0323
© 2023 Kohler Co.
Kohler, Wisconsin 53044
Printed in U.S.A.
1-800-4-KOHLER
(1-800-456-4537)