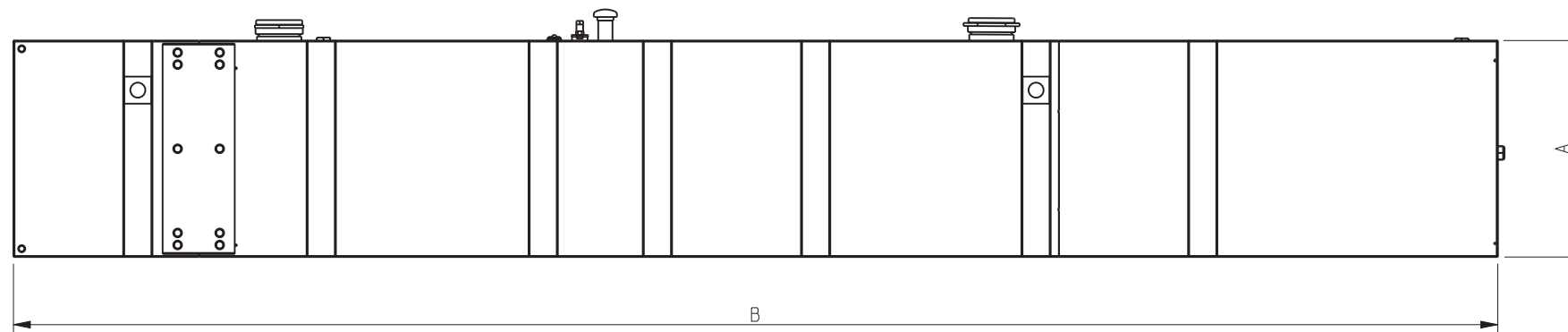
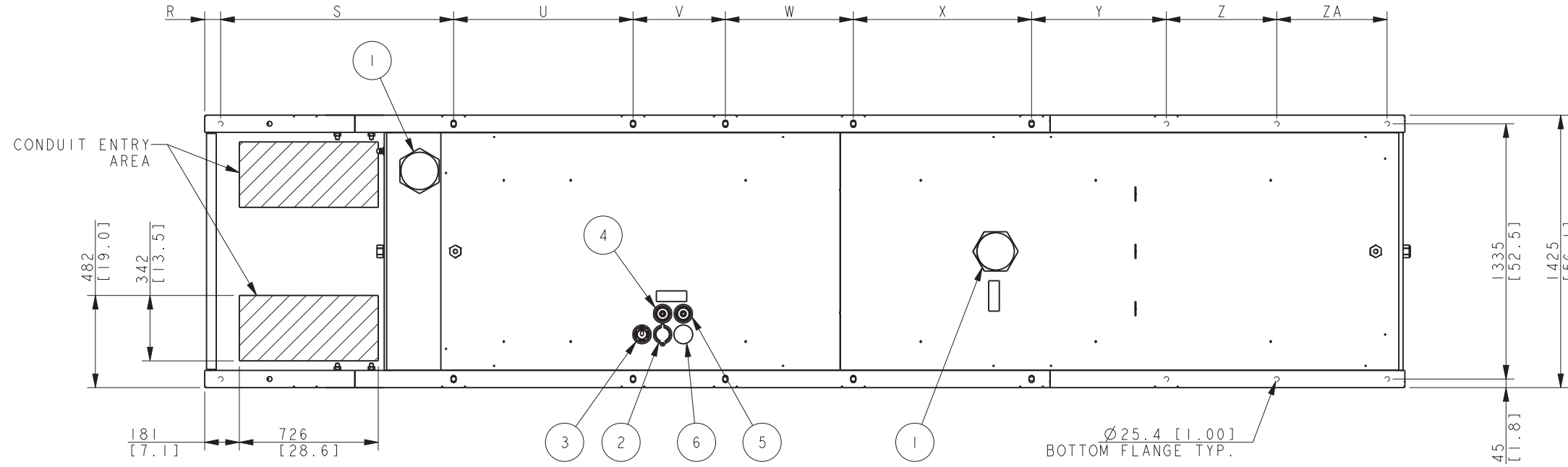


TANK W/OPEN UNIT

LITERS [GALLONS] MIN HOURS	GENSETS	WEIGHT KG [LBS]	A	B	R	S	U	V	W	X	Y	Z	ZA	ZB
1530 [404] 12 HOURS	350-400KW	1110 [2446]	406.4 [16.0]	4939.2 [194.4]	83.1 [3.27]	1217.6 [47.94]	937.9 [36.93]	482.6 [19.00]	668.6 [26.32]	931.5 [36.67]	523.9 [20.63]	-	-	-
1771 [468] 12 HOURS	500KW	1158 [2554]	457.2 [18.0]											
2930 [774] 24 HOURS	350-400KW	1401 [3089]	762.0 [30.0]											
3384 [894] 24 HOURS	500KW	1484 [3271]	838.2 [33.0]											
4394 [1161] 36 HOURS	350-400KW	1789 [3945]	914.4 [36.0]	5637.2 [221.9]	83.1 [3.27]	2040.2 [80.32]	937.9 [36.93]	482.6 [19.00]	668.6 [26.32]	931.5 [36.67]	574.6 [22.62]	648.3 [25.52]	-	-
5046 [1333] 36 HOURS	500KW	1986 [4379]	914.4 [36.0]	7094.8 [279.3]							704.3 [27.73]	577.0 [22.72]		

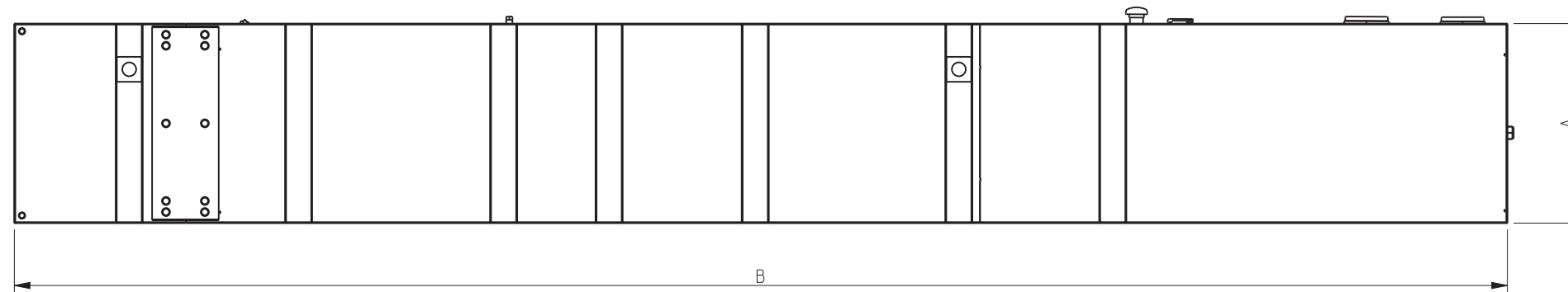
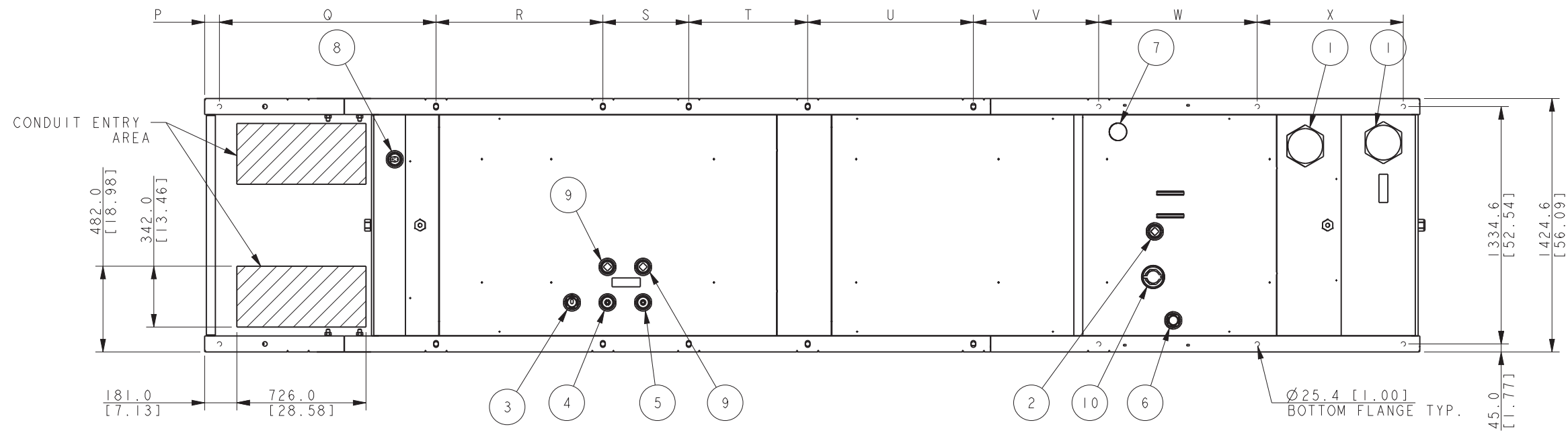


5046 [1333 GAL.] 36 HOUR STANDARD TANK SHOWN.

ITEM	DESCRIPTION
6	VENT, NORMAL
5	RETURN, FUEL (1/2" NPT)
4	SUPPLY, FUEL (1/2" NPT)
3	GAUGE, FUEL LEVEL, W/ SENDER
2	FILL CAP, 2" LOCKABLE W/PIPE RISER
1	CAP, EMERGENCY VENT

REV	DATE	ON COMPOSITE DWGS. SEE PART NO. FOR REVISION LEVEL	BY	DO NOT SCALE. REFERENCE THE MODEL FOR ALL UNSPECIFIED DIMENSIONS
-	06FEB2020	NEW DRAWING [CT201734]	YBY	UNLESS OTHERWISE SPECIFIED: ALL DIMENSIONS IN MILLIMETERS GENERAL TOLERANCES: N/A
				KOHLER. KOHLER, WISCONSIN 53044 THIS DRAWING IN DESIGN AND DETAIL IS KOHLER CO. PROPERTY AND MUST NOT BE USED EXCEPT IN CONNECTION WITH KOHLER CO. WORK. ALL RIGHTS OF DESIGN OR INVENTION ARE RESERVED. TITLE: DIMENSION PRINT, 350-500RE0ZJC/D ENCL & TANKS SCALE: NA CAD NO. SHEET 1 of 4 DWG NO. ADV-9191

12 - 36 HOUR
350-500kW STD TANK
OPEN UNIT



TANK W/OPEN UNIT

LITERS [GALLONS]	MIN HOURS	GENSETS	WEIGHT KG [LBS]	A	B	P	Q	R	S	T	U	V	W	X
1530 [404]	12 HOURS STATE	350-400KW	1281 [2825]	381.0 [15.0]	5891.2 [231.9]	83.1 [3.27]	1217.6 [47.94]	937.9 [36.93]	482.6 [19.00]	668.6 [26.32]	931.5 [36.67]	664.2 [26.15]	812.7 [32.00]	
1771 [468]	12 HOURS STATE	500KW	1326 [2923]	431.8 [17.0]									772.6 [30.42]	
2930 [774]	24 HOURS STATE	350-400KW	1547 [3411]	660.4 [26.0]	6069.0 [238.9]							704.3 [27.73]	772.6 [30.42]	
3384 [894]	24 HOURS STATE	500KW	1630 [3594]	736.6 [29.0]									950.4 [37.42]	
4394 [1161]	36 HOURS STATE	350-400KW	1874 [4072]	914.4 [36.0]									891.3 [35.09]	
5046 [1333]	36 HOURS STATE	500KW	2094 [4616]	914.4 [36.0]	6831.0 [268.9]								821.1 [32.33]	

5046 [1333 GAL.] 36 HOUR STATE TANK SHOWN.

ITEM	DESCRIPTION
10	FILL CAP, 2" LOCKABLE W/PIPE RISER
9	PLUG, PIPE (2"NPT)
8	SWITCH, FUEL IN BASIN TOP MTD, 2"
7	VENT, NORMAL
6	GAUGE, FUEL LEVEL, DIRECT READ
5	RETURN, FUEL (1/2" NPT)
4	SUPPLY, FUEL (1/2" NPT)
3	GAUGE, FUEL LEVEL, W/ SENDER
2	PLUG, PIPE (2" NPT)
1	CAP, EMERGENCY VENT

**12 - 36 HOUR
350-500kW STATE TANK
OPEN UNIT**

REV	DATE	ON COMPOSITE DWGS. SEE PART NO. FOR REVISION LEVEL	BY	DO NOT SCALE. REFERENCE THE MODEL FOR ALL UNSPECIFIED DIMENSIONS
-	06FEB2020	NEW DRAWING [CT201734]	YBY	

UNLESS OTHERWISE SPECIFIED:
ALL DIMENSIONS IN MILLIMETERS
GENERAL TOLERANCES: N/A

THIRD ANGLE PROJECTION

APPROVALS	DATE
DRAWN YBY	06FEB2020
CHECKED KJB	06FEB2020
APPROVED DMS	06FEB2020

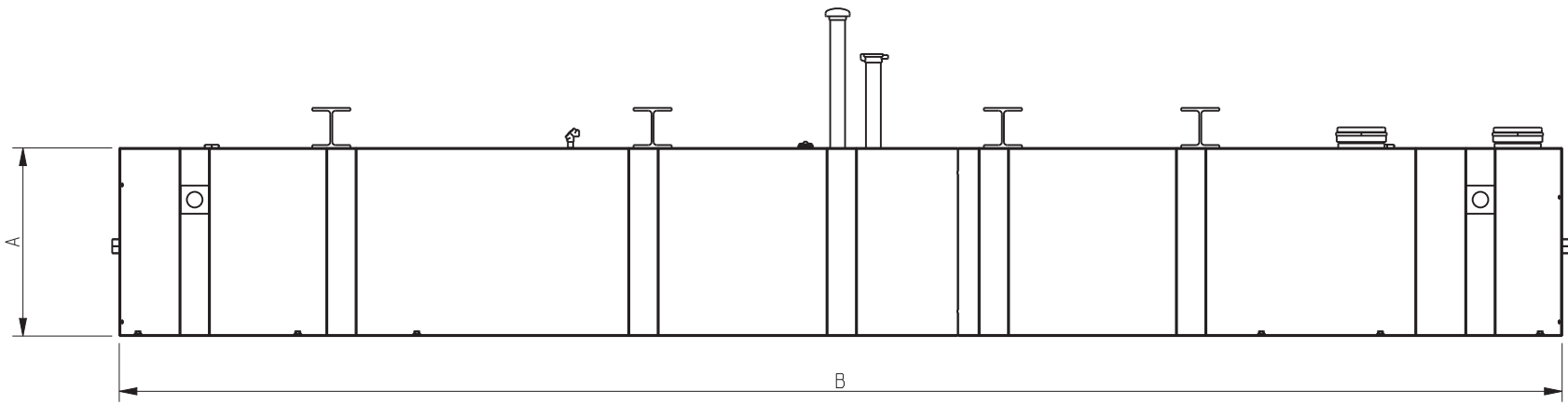
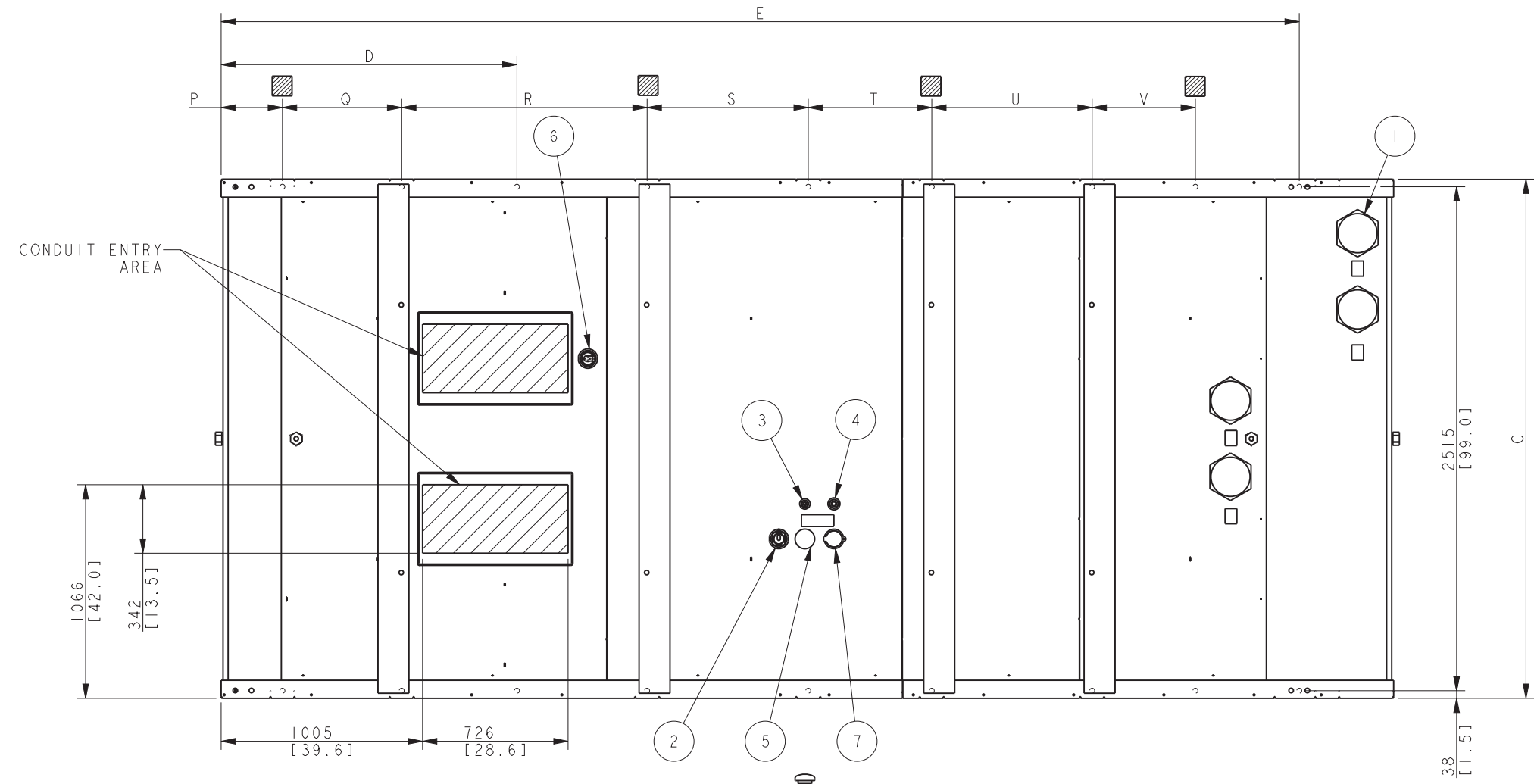
KOHLER.
KOHLER, WISCONSIN 53044
THIS DRAWING IN DESIGN AND DETAIL IS KOHLER CO. PROPERTY AND MUST NOT BE USED EXCEPT IN CONNECTION WITH KOHLER CO. WORK. ALL RIGHTS OF DESIGN OR INVENTION ARE RESERVED.

TITLE: **DIMENSION PRINT, 350-500RE0ZJC/D ENCL & TANKS**

SCALE: NA CAD NO. SHEET 2 of 4

DWG NO. **ADV-9191**

TANK INFORMATION										D	E	P	Q	R	S	T	U	V
LITERS [GALLONS] MIN HOURS	GENSETS	DIM A MM [INCH]	DIM B MM [INCH]	DIM C MM [INCH]	TANK WEIGHT KG [LBS] (NO FUEL)													
5042 [1332] 48 HOURS	350KW	711.2 [28.0]	5850.1 [230.3]	1981.2 [78.0]	2751 [6064]	1475.9 [58.1]	5379.3 [211.8]	305.8 [12.0]	595.1 [23.4]	224.5 [48.2]	804.0 [31.7]	616.5 [24.3]	800.1 [31.5]	515.0 [20.3]				
5818 [1537] 48 HOURS	400KW	812.8 [32.0]	5850.1 [230.3]		2887 [6364]													
6651 [1757] 48 HOURS	500KW	914.4 [36.0]	5850.1 [230.3]		3029 [6678]													
7510 [1984] 72 HOURS	350KW	762.0 [30.0]	5850.1 [230.3]	3486 [7686]														
8695 [2297] 72 HOURS	400KW	889.0 [35.0]	5850.1 [230.3]	3656 [8061]														
9971 [2634] 72 HOURS	500KW	914.4 [36.0]	6028 [237.3]	2590.8 [102.0]	3901 [8600]													



7510 [1984 GAL.] 72 HOUR STANDARD TANK SHOWN.

ITEM	DESCRIPTION
7	FILL CAP, 2" LOCKABLE W/PIPE RISER
6	SWITCH, FUEL IN BASIN TOP MTD, 2"
5	VENT, NORMAL
4	RETURN, FUEL (1/2" NPT)
3	SUPPLY, FUEL (1/2" NPT)
2	GAUGE, FUEL LEVEL, W/ SENDER
1	CAP, EMERGENCY VENT

GROUND CLEARANCE I-BEAM MOUNTING HOLE

REV	DATE	ON COMPOSITE DWGS. SEE PART NO. FOR REVISION LEVEL	BY	DO NOT SCALE. REFERENCE THE MODEL FOR ALL UNSPECIFIED DIMENSIONS
-	06FEB2020	NEW DRAWING [CT201734]	YBY	

UNLESS OTHERWISE SPECIFIED:
ALL DIMENSIONS IN MILLIMETERS
GENERAL TOLERANCES: N/A

THIRD ANGLE PROJECTION

APPROVALS	DATE
DRAWN YBY	06FEB2020
CHECKED KJB	06FEB2020
APPROVED DMS	06FEB2020

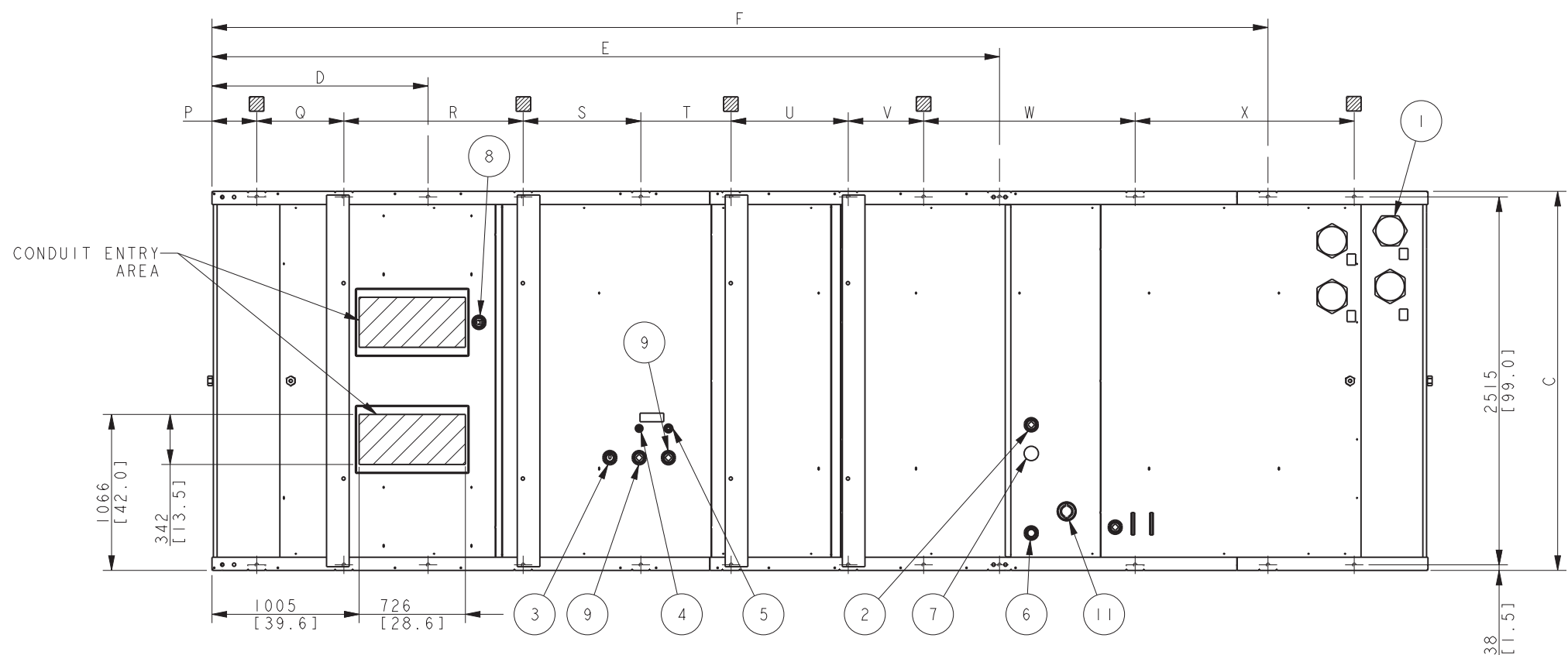
KOHLER.
KOHLER, WISCONSIN 53044
THIS DRAWING IN DESIGN AND DETAIL IS KOHLER CO. PROPERTY AND MUST NOT BE USED EXCEPT IN CONNECTION WITH KOHLER CO. WORK. ALL RIGHTS OF DESIGN OR INVENTION ARE RESERVED.

TITLE: **DIMENSION PRINT, 350-500RE0ZJC/D ENCL & TANKS**

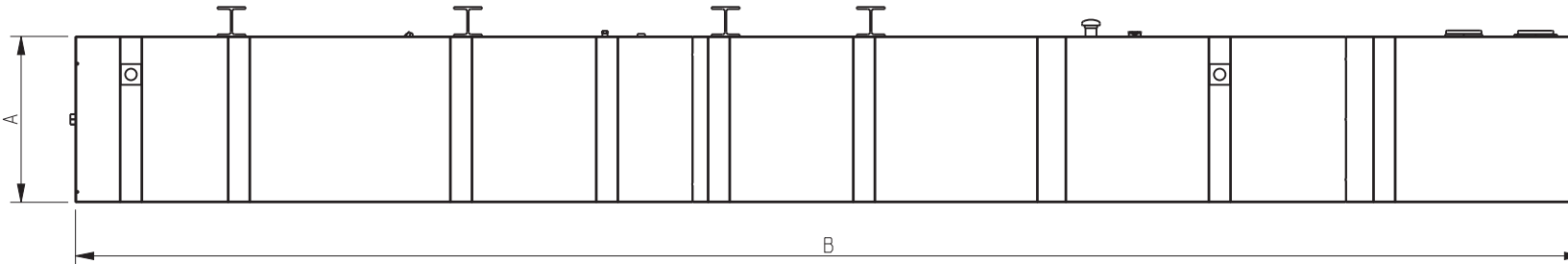
SCALE: NA CAD NO. SHEET 3 of 4
DWG NO. **ADV-9191**

48 - 72 HOUR
350-500kW STANDARD TANK
OPEN UNIT

TANK INFORMATION																		
LITERS [GALLONS] MIN HOURS	GENSETS	DIM A MM [INCH]	DIM B MM [INCH]	DIM C MM [INCH]	TANK WEIGHT KG [LBS] (NO FUEL)	D	E	F	P	Q	R	S	T	U	V	W	X	
5061 [1337] 48 HOURS STATE	350KW	635.0 [25.0]	6282[247.3]	1981.2[78.0]	2953 [6510]	1475.9 [58.1]	5379.3 [211.8]	-	305.8 [12.0]	595.1 [23.4]	224.5 [48.2]	804.0 [31.7]	616.5 [24.3]	800.1 [31.5]	515.0 [20.3]	1358.9 [53.5]	-	
5852 [1546] 48 HOURS STATE	400KW	711.2 [28.0]	6282[247.3]		3077 [6784]													
6681 [1765] 48 HOURS STATE	500KW	812.8 [32.0]	6282[247.3]	3214 [7087]														
7537 [1991] 72 HOURS STATE	350KW	660.4 [26.0]	6282[247.3]	3263 [7193]														
8748 [2311] 72 HOURS STATE	400KW	762.0 [30.0]	6282[247.3]	3415 [7529]														
9993 [2640] 72 HOURS STATE	500KW	863.6 [34.0]	6282[247.3]	4063 [8958]														
9993 [2640] 96 HOURS STATE	350KW		6282[247.3]	4063 [8958]														
11602 [3065] 96 HOURS STATE	400KW		7264.4[286.0]	4426 [9758]	6770.7 [266.6]													
13325 [3520] 96 HOURS STATE	500KW	8305.8[327]	4863 [10720]	7213 [283.9]														



13325 [3520 GAL.] 96 HOUR STATE TANK SHOWN.



GROUND CLEARANCE I-BEAM MOUNTING HOLE

ITEM	DESCRIPTION
10	FILL CAP, 2" LOCKABLE W/PIPE RISER
9	PLUG, PIPE (2" NPT)
8	SWITCH, FUEL IN BASIN TOP MTD, 2"
7	VENT, NORMAL
6	GAUGE, FUEL LEVEL, DIRECT READ
5	RETURN, FUEL (1/2" NPT)
4	SUPPLY, FUEL (1/2" NPT)
3	GAUGE, FUEL LEVEL, W/ SENDER
2	PLUG, PIPE (2"NPT)
1	CAP, EMERGENCY VENT

REV	DATE	ON COMPOSITE DWGS. SEE PART NO. FOR REVISION LEVEL	BY	DO NOT SCALE. REFERENCE THE MODEL FOR ALL UNSPECIFIED DIMENSIONS
-	06FEB2020	NEW DRAWING [CT201734]	YBY	UNLESS OTHERWISE SPECIFIED: ALL DIMENSIONS IN MILLIMETERS GENERAL TOLERANCES: N/A
				KOHLER. KOHLER, WISCONSIN 53044 THIS DRAWING IN DESIGN AND DETAIL IS KOHLER CO. PROPERTY AND MUST NOT BE USED EXCEPT IN CONNECTION WITH KOHLER CO. WORK. ALL RIGHTS OF DESIGN OR INVENTION ARE RESERVED. TITLE: DIMENSION PRINT, 350-500RE0ZJC/D ENCL & TANKS SCALE: NA CAD NO. SHEET 4 of 4 DWG NO. ADV-9191
		APPROVALS	DATE	
		DRAWN	YBY 06FEB2020	
		CHECKED	KJB 06FEB2020	
		APPROVED	DMS 06FEB2020	

48 - 96 HOUR
350-500kW STATE TANK
OPEN UNIT

D