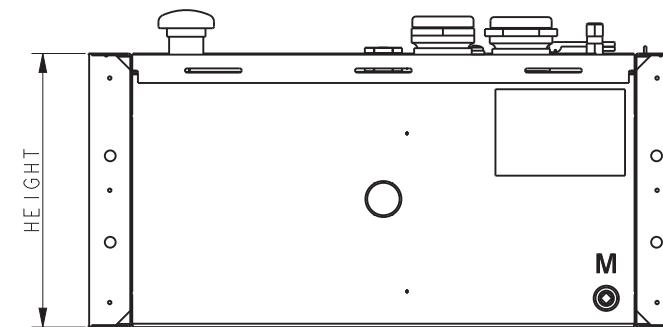
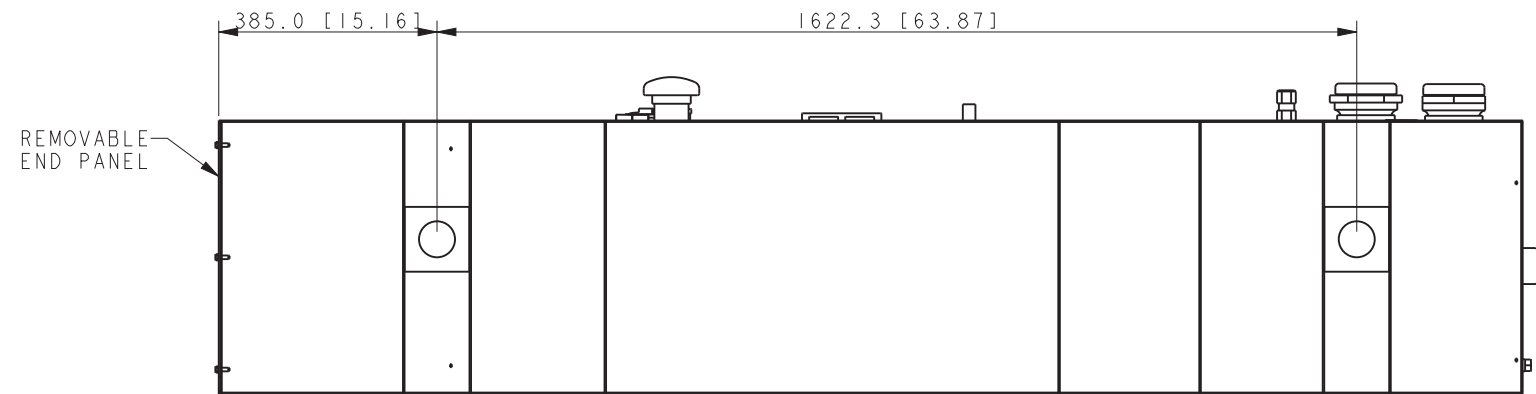
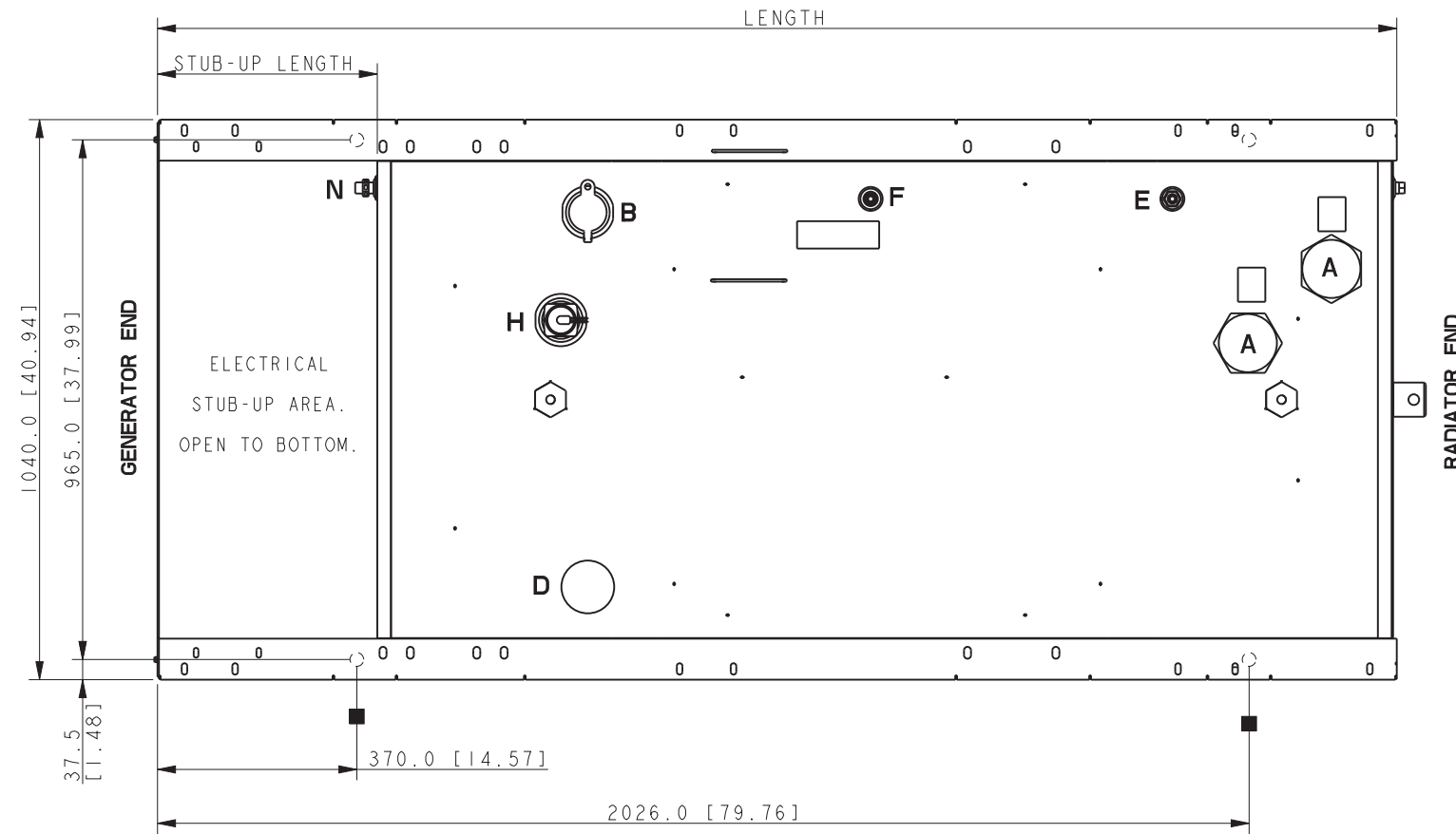


MODEL	CAPACITY		WEIGHT		LENGTH		HEIGHT		STUB-UP LENGTH		EMERGENCY VENT (A) INNER/OUTER
	LITERS	GAL	KG	LBS	MM	IN	MM	IN	MM	IN	IN
40/50/60kW	505	133	280	618	2300.0	90.6	482.6	19.0	408.0	16.1	3/3
40/50kW	868	229	379	836	2300.0	90.6	787.4	31.0	408.0	16.1	3/3
40/60kW	1043	275	416	918	2300.0	90.6	889.0	35.0	408.0	16.1	3/3
50/60kW	1527	403	522	1152	2895.6	114.0	914.4	36.0	304.8	12.0	4/4

**TANK FITTINGS:**

- A. 1" NPT EMERGENCY VENT FITTING PER NFPA 30 WITH VENT CAPS (QTY 2).
- B. 2" NPT FUEL FILL FITTING WITH LOCKABLE CAP AND 2" RISER.
- D. 2" NPT NORMAL VENT FITTING WITH MUSHROOM VENT CAP AND 3" RISER.
- E. 1/2" NPT FITTING FOR REMOVABLE ENGINE SUPPLY DIP TUBE (3/8" NPT FEMALE WITH CHECK VALVE).
- F. 1/2" NPT FITTING FOR REMOVABLE FUEL RETURN DIP TUBE (3/8" NPT FEMALE).
- H. 2" NPT FOR FUEL LEVEL SENDING UNIT.
- M. 1/2" NPT BASIN DRAIN (INSTALL STEEL 1/2" NPT PIPE PLUG).
- N. 1/2" NPT FOR FUEL IN BASIN SWITCH.



**NOTE:**  
FOR FURTHER TANK DETAIL  
SEE INDIVIDUAL DRAWINGS

■ 4X Ø25.4 [1.00]  
STANDARD MOUNTING

**STANDARD TANK**

REV	DATE	ON COMPOSITE DWGS. SEE PART NO. FOR REVISION LEVEL	BY	UNLESS OTHERWISE SPECIFIED - 1) DIMENSIONS ARE IN MILLIMETERS 2) TOLERANCES ARE:
-	11-18-14	NEW DRAWING [CT99811]	SDS	X.XX ± 0.25
A	2-3-15	SEE SHEET 2 [CT105100]	SAM	X.X ± 1.0
B	1-18-18	40/50/60kW, 40/50kW & 50/60kW WAS 40/60kW; SEE SHEET 2 [CT183307]	SRM	X ± 1.5
				ANGLES ± 0° 30' MAX.
				THIRD ANGLE PROJECTION
				APPROVALS
				DATE
				DRAWN SDS 11-18-14
				CHECKED SDS 11-18-14
				APPROVED AJD 11-18-14

**KOHLER CO. METRIC PRO-E**  
POWER SYSTEMS, KOHLER, WI 53044 U.S.A.  
THIS DRAWING IN DESIGN AND DETAIL IS KOHLER CO. PROPERTY AND MUST NOT BE USED EXCEPT IN CONNECTION WITH KOHLER CO. WORK. ALL RIGHTS OF DESIGN OR INVENTION ARE RESERVED.

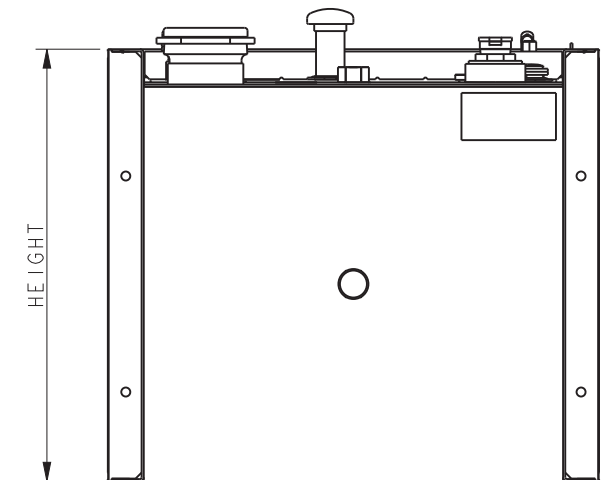
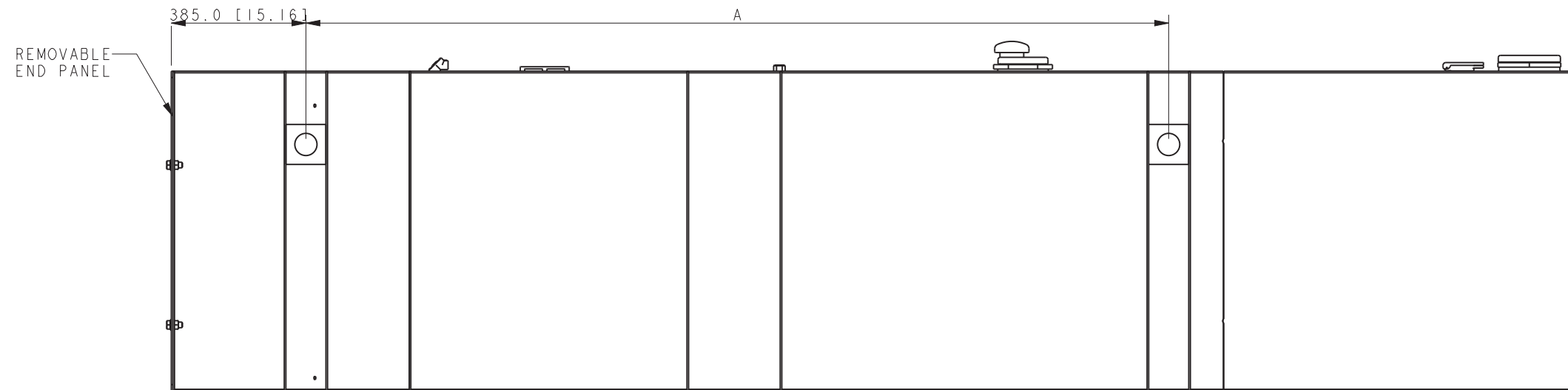
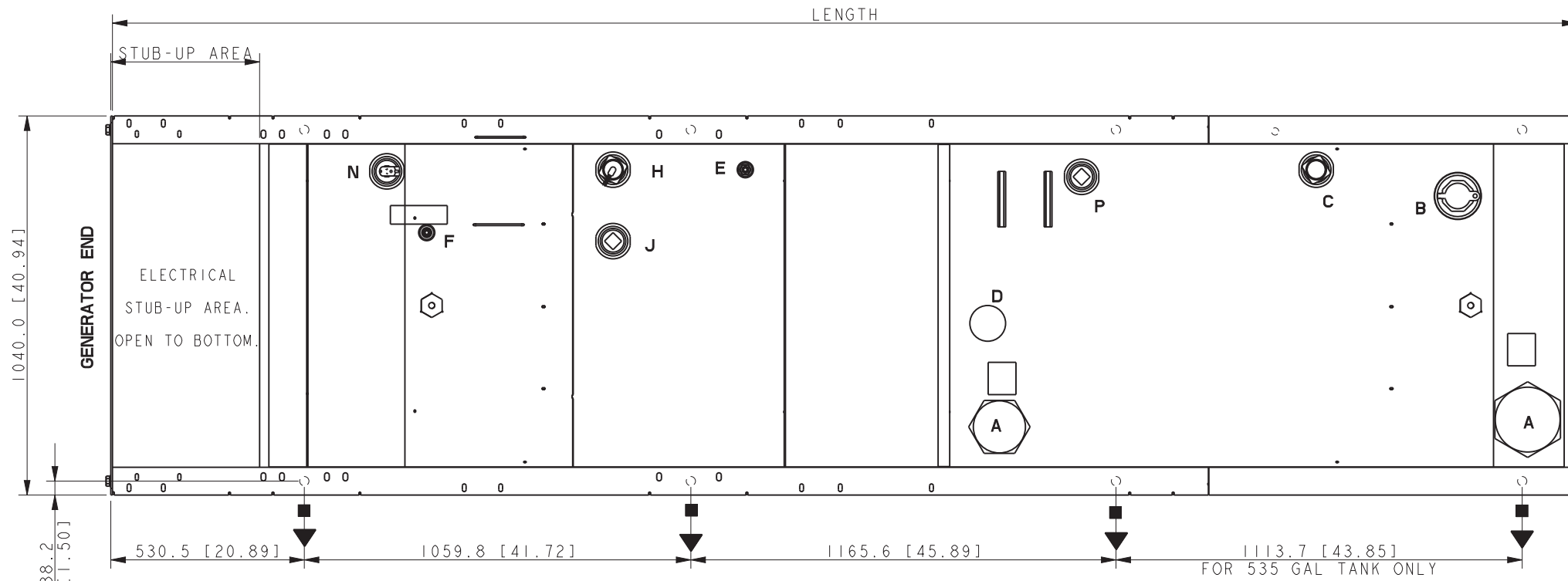
**TITLE**  
**DIMENSION PRINT**

SCALE 0.15 CAD NO. SHEET 1 of 2  
DWG NO. **ADV-8753**

MODEL	CAPACITY		WEIGHT		LENGTH		HEIGHT		STUB-UP LENGTH		LIFTING EYE DIM A		MTG HOLES	EMERGENCY VENT (A) INNER/OUTER
	LITERS	GAL	KG	LBS	MM	IN	MM	IN	MM	IN	MM	IN	QTY	IN
40/50/60kW	541	142	466	1027	2895.6	114.0	431.8	17.0	408.0	16.1	2184.5	86.0	6	3/3
50/60kW	898	237	599	1321	2895.6	114.0	660.4	26.0	408.0	16.1	2184.5	86.0	6	3/3
40/60kW	1057	279	658	1452	2895.6	114.0	762.0	30.0	408.0	16.1	2184.3	86.0	6	3/4
40/50/60kW	1520	401	777	1714	2895.6	114.0	914.4	36.0	304.8	12.0	2184.3	86.0	6	4/4
50/60kW	2028	535	978	2156	4019.6	158.3	914.4	36.0	408.0	16.1	2467.9	97.2	8	4/5

**TANK FITTINGS:**

- A. 1" NPT EMERGENCY VENT FITTING PER NFPA 30 WITH VENT CAPS (QTY 2).
- B. 4" NPT FUEL FILL FITTING BUSHED TO 2" NPT WITH LOCKABLE FILL CAP AND 2" RISER
- C. 2" NPT FUEL LEVEL GAUGE FITTING W/ DIRECT READING MECHANICAL GAUGE.
- D. 2" NPT NORMAL VENT FITTING WITH MUSHROOM VENT CAP AND 5" RISER.
- E. 1/2" NPT FITTING FOR REMOVABLE ENGINE SUPPLY DIP TUBE (3/8" NPT FEMALE) WITH CHECK VALVE.
- F. 1/2" NPT FITTING FOR REMOVABLE FUEL RETURN DIP TUBE (3/8" NPT FEMALE).
- H. 2" NPT FUEL LEVEL SENDING UNIT.
- J. 2" NPT FITTING FOR OPTIONAL SWITCH (INSTALL 2"NPT PIPE PLUG)
- N. 2" NPT FOR FUEL IN BASIN SWITCH
- P. 2" NPT FITTING FOR OPTIONAL SWITCH (INSTALL 2"NPT PIPE PLUG)



**NOTE:**  
FOR FURTHER TANK DETAIL  
SEE INDIVIDUAL DRAWINGS

- Ø25.4 [1.00] STANDARD MOUNTING
- ▼ Ø25.4 [1.00] BOTTOM BEAM MOUNTING

STATE TANK

REV	DATE	ON COMPOSITE DWGS. SEE PART NO. FOR REVISION LEVEL	BY
-	11-18-14	NEW DRAWING [CT99811]	SDS
A	2-3-15	(D-5) DIM A AND MTG HOLES QTY ADDED (B-4) 1113.7 DIM ADDED [CT105100]	SAM
B	1-18-18	(D-8) 40/50/60kW, 50/60kW WAS 40/60kW; (D-5) 2184.3 WAS 2184.5, 2467.9 WAS 2498.4; SEE SHEET 1 [CT183307]	SRM

APPROVALS	DATE
SDS	11-18-14
SDS	11-18-14
AJD	11-18-14

**KOHLER CO. METRIC PRO-E**  
POWER SYSTEMS, KOHLER, WI 53044 U.S.A.  
THIS DRAWING IN DESIGN AND DETAIL IS KOHLER CO. PROPERTY AND MUST NOT BE USED EXCEPT IN CONNECTION WITH KOHLER CO. WORK. ALL RIGHTS OF DESIGN OR INVENTION ARE RESERVED.

**TITLE**  
**DIMENSION PRINT**

SCALE 0.13 CAD NO. SHEET 2 of 2  
DWG NO. **ADV-8753**