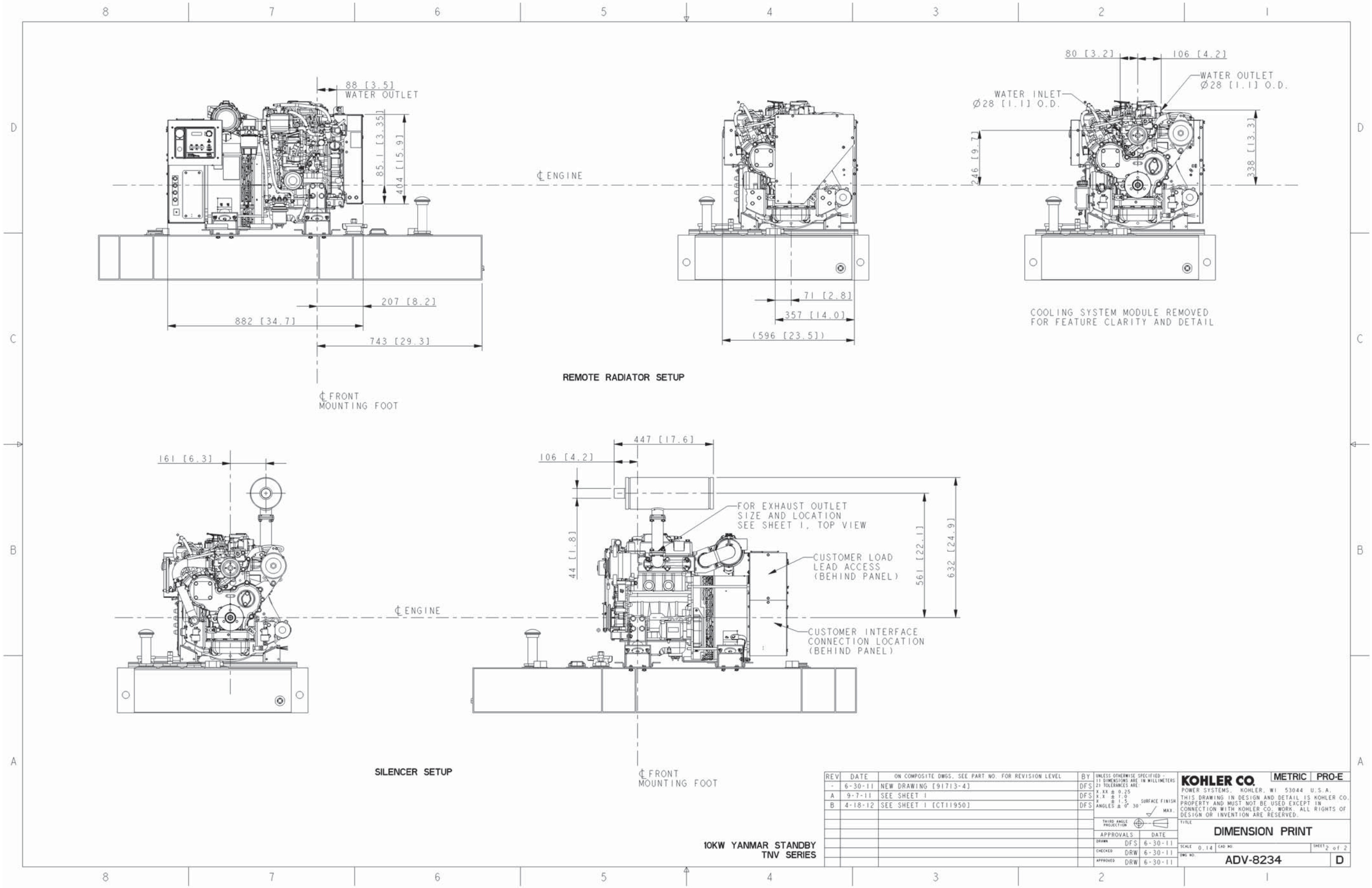


10KW YANMAR STANDBY TNV SERIES

REV	DATE	ON COMPOSITE DWGS, SEE PART NO. FOR REVISION LEVEL	BY	UNLESS OTHERWISE SPECIFIED - 1) DIMENSIONS ARE IN MILLIMETERS 2) TOLERANCES ARE:	DFS	THIRD ANGLE PROJECTION	APPROVALS	DATE	TITLE
-	6-30-11	NEW DRAWING [91713-4]	DFS	X .XX ± 0.25 X .X ± 1.0 X ± 1.5	DFS	MAX.			<b>KOHLER CO. METRIC PRO-E</b>
A	9-7-11	(B,C-4) OVERALL HEIGHT DIMENSION 949 [37.4] ADDED [92263]	DFS		DFS				POWER SYSTEMS, KOHLER, WI, 53044 U.S.A. THIS DRAWING IN DESIGN AND DETAIL IS KOHLER CO. PROPERTY AND MUST NOT BE USED EXCEPT IN CONNECTION WITH KOHLER CO. WORK. ALL RIGHTS OF DESIGN OR INVENTION ARE RESERVED.
B	4-18-12	(D-7,-8) LOAD LEAD CONDUIT LOCATION ADDED [CT11950]	DFS		DFS				<b>DIMENSION PRINT</b>
							SCALE 1:2X	SHEET 1 of 2	
							ADV-8234		



REV	DATE	ON COMPOSITE DWGS. SEE PART NO. FOR REVISION LEVEL	BY	UNLESS OTHERWISE SPECIFIED - 1) DIMENSIONS ARE IN MILLIMETERS 2) TOLERANCES ARE:	DF	DATE	APPROVALS
-	6-30-11	NEW DRAWING [91713-4]	DFS	X.XX ± 0.25	DF	6-30-11	DFS
A	9-7-11	SEE SHEET 1	DFS	X.X ± 1.0	DF	6-30-11	DFS
B	4-18-12	SEE SHEET 1 [CT11950]	DFS	X.X ± 1.5	DF	6-30-11	DFS
				ANGLES ± 0° 30'	DF	6-30-11	DFS
				SURFACE FINISH	DF	6-30-11	DFS
				MAX.	DF	6-30-11	DFS
				THIRD ANGLE PROJECTION	DF	6-30-11	DFS

<b>KOHLER CO. METRIC PRO-E</b> POWER SYSTEMS, KOHLER, WI, 53044 U.S.A. THIS DRAWING IN DESIGN AND DETAIL IS KOHLER CO. PROPERTY AND MUST NOT BE USED EXCEPT IN CONNECTION WITH KOHLER CO. WORK. ALL RIGHTS OF DESIGN OR INVENTION ARE RESERVED.	
<b>TITLE</b> DIMENSION PRINT	
SCALE 0.14 CAD NO.	SHEET 2 of 2
DWG NO. <b>ADV-8234</b>	<b>D</b>