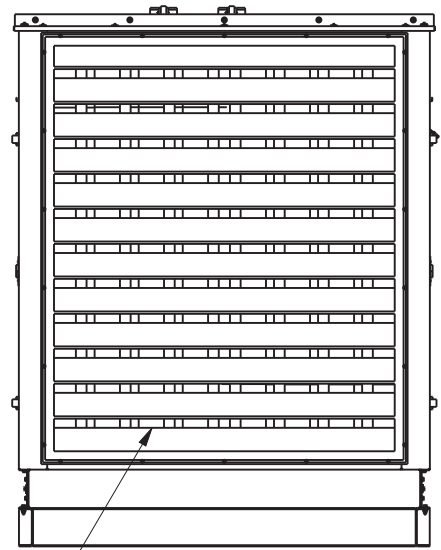
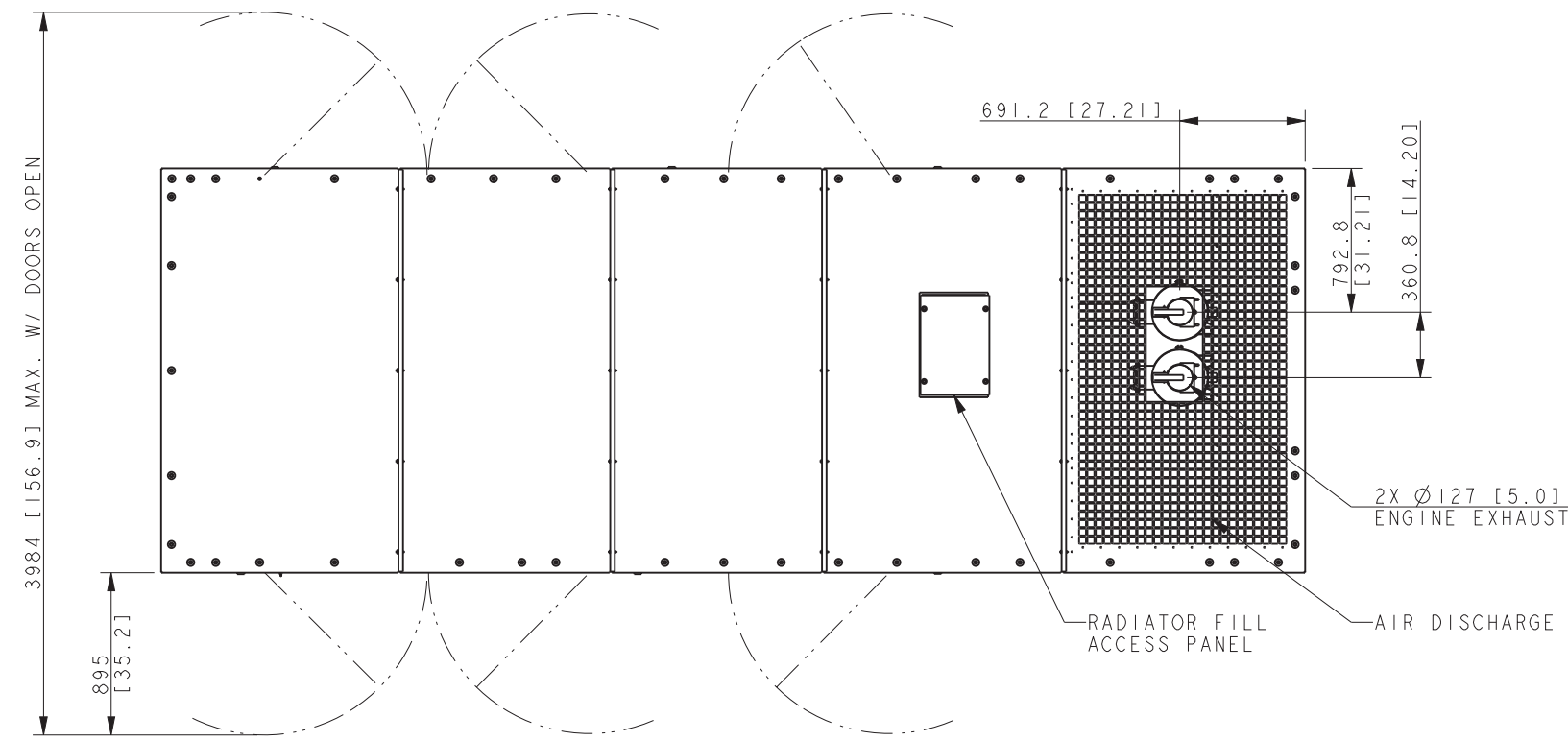
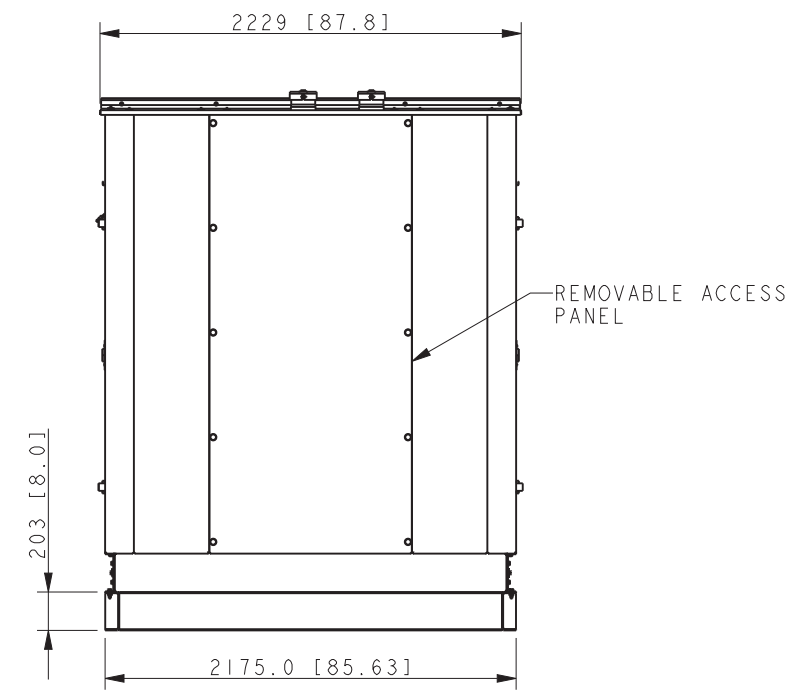
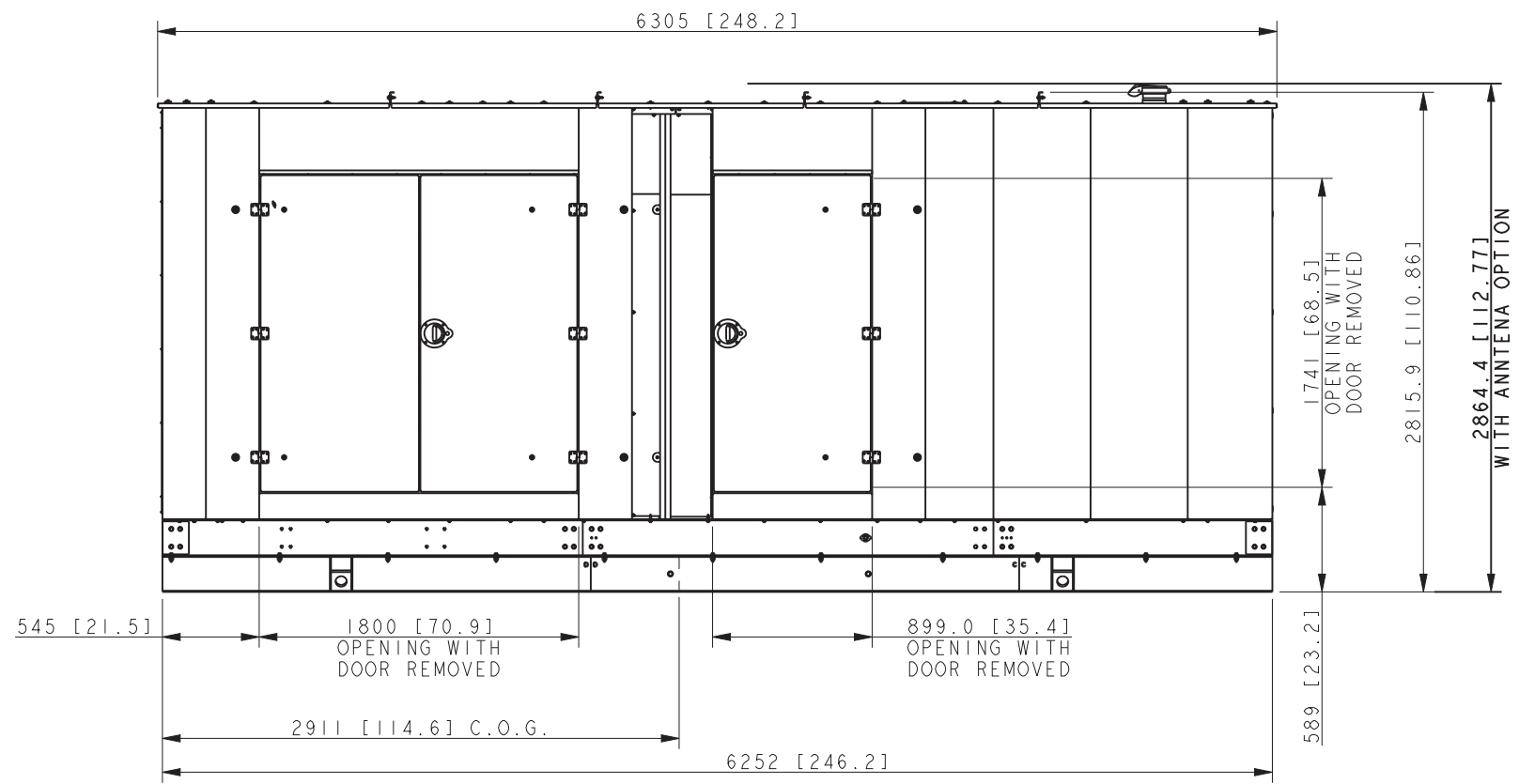


MODEL	ENCLOSURE WEIGHT	
	STEEL WEATHER	1315 Kg [2900 LBS]
300-350 REZXB / RZXB	STEEL SOUND	1814 Kg [4000 LBS]
	ALUMINUM SOUND	910 Kg [2000 LBS]



1869 X 2116 [74 X 83]
FIXED AIR INTAKE
LOUVER (STANDARD)



REMOVABLE ACCESS
PANEL

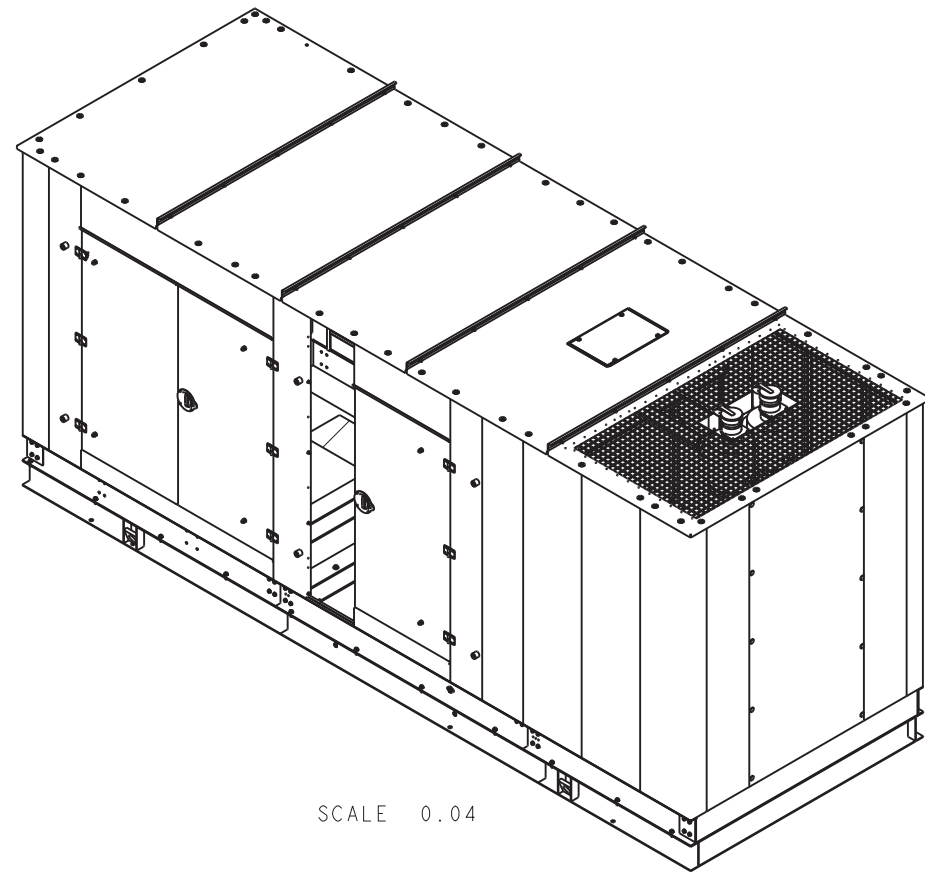
300-350kW DOOSAN
ENCLOSURE W/LIFTING BASE

REV	DATE	ON COMPOSITE DWGS. SEE PART NO. FOR REVISION LEVEL	BY	UNLESS OTHERWISE SPECIFIED - 1) DIMENSIONS ARE IN MILLIMETERS 2) TOLERANCES ARE:
-	6-2-11	NEW DRAWING [90394]	GFR	X.XX ± 0.25
A	11-25-13	SEE SHEET 3 [CT64662]	SAM	X.X ± 1.0
B	7-17-17	(C-3) NOTE UPDATED, SEE SHEET 2 [CT175008]	CCL	X ± 1.5
C	03JULY2020	(D-1) STEEL SOUND: WEIGHT 1814 KG [4000 LBS] WAS 1400 KG [3100 LBS]; [CT205196]	RSG	ANGLES ± 0° 30'
				SURFACE FINISH MAX.
				THIRD ANGLE PROJECTION
				APPROVALS
				DATE
				DRAWN GFR 6-2-11
				CHECKED JMS 6-2-11
				APPROVED AJD 6-2-11

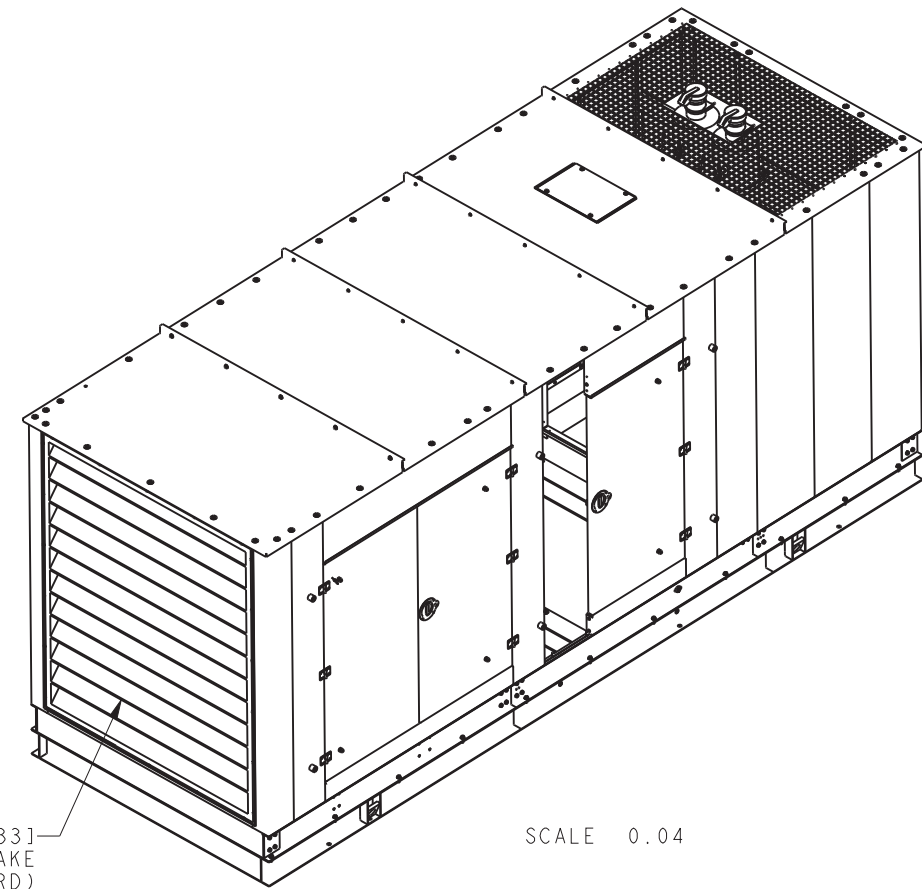
KOHLER CO. METRIC PRO-E
POWER SYSTEMS, KOHLER, WI 53044 U.S.A.
THIS DRAWING IN DESIGN AND DETAIL IS KOHLER CO.
PROPERTY AND MUST NOT BE USED EXCEPT IN
CONNECTION WITH KOHLER CO. WORK. ALL RIGHTS OF
DESIGN OR INVENTION ARE RESERVED.

TITLE
DIMENSION PRINT

SCALE 0.05 CAD NO. SHEET 1 of 3
DWG NO. **ADV-8162** D

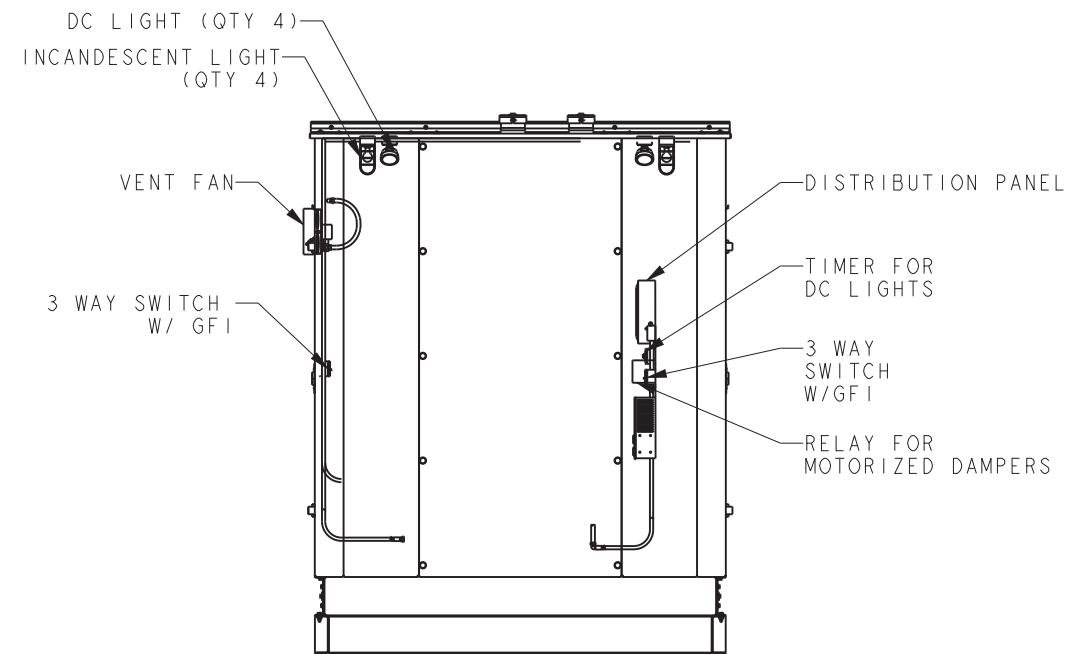
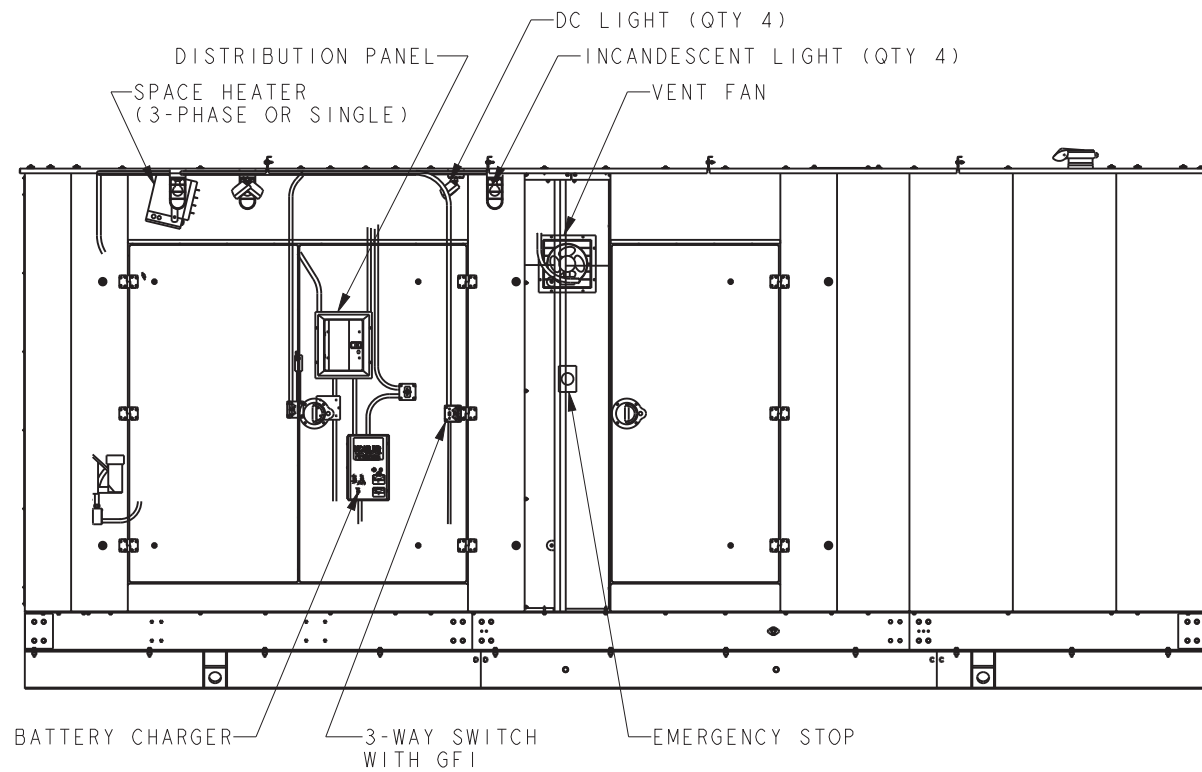


SCALE 0.04



SCALE 0.04

1869 X 2116 [74 X 83]
FIXED AIR INTAKE
LOUVER (STANDARD)
(MOTORIZED LOUVERS OPTIONAL)



REV	DATE	ON COMPOSITE DWGS. SEE PART NO. FOR REVISION LEVEL	BY	UNLESS OTHERWISE SPECIFIED - 1) DIMENSIONS ARE IN MILLIMETERS 2) TOLERANCES ARE:
-	6-2-11	NEW DRAWING [90394]	GFR	X.XX ± 0.25
A	11-25-13	SEE SHEET 3 [CT64662]	SAM	X.X ± 1.0
B	7-17-17	(B-4, -6) VENT FAN LOCATION UPDATED, EMERGENCY STOP LOCATION ADDED, (B-1) VIEW REMOVED, SEE SHEET 1 [CT175008]	CCL	X ± 1.5 ANGLES ± 0° 30' MAX.
C	03JULY2020	SEE SHEET 1 [CT205196]	RSG	THIRD ANGLE PROJECTION
			APPROVALS	DATE
			DRAWN	GFR 6-2-11
			CHECKED	JMS 6-2-11
			APPROVED	AJD 6-2-11

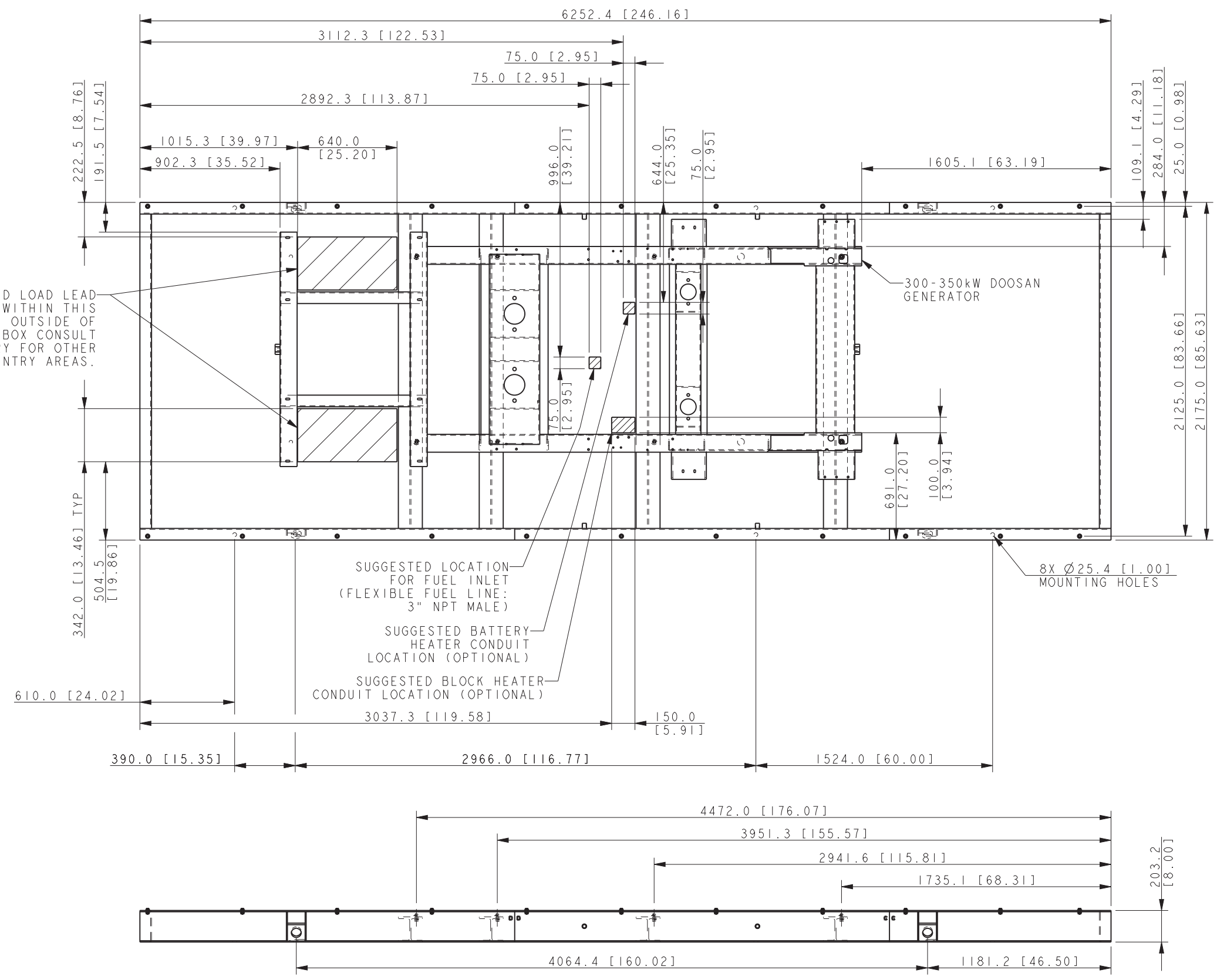
300-350kW DOOSAN
ENCLOSURE W/LIFTING BASE

KOHLER CO. METRIC PRO-E
POWER SYSTEMS, KOHLER, WI 53044 U.S.A.
THIS DRAWING IN DESIGN AND DETAIL IS KOHLER CO.
PROPERTY AND MUST NOT BE USED EXCEPT IN
CONNECTION WITH KOHLER CO. WORK. ALL RIGHTS OF
DESIGN OR INVENTION ARE RESERVED.

TITLE
DIMENSION PRINT

SCALE 0.05 CAD NO. SHEET 2 of 3
DWG NO. **ADV-8162** D

SUGGESTED LOAD LEAD ENTRANCE WITHIN THIS BOUNDARY. OUTSIDE OF JUNCTION BOX CONSULT FACTORY FOR OTHER ENTRY AREAS.



SUGGESTED LOCATION FOR FUEL INLET (FLEXIBLE FUEL LINE: 3" NPT MALE)

SUGGESTED BATTERY HEATER CONDUIT LOCATION (OPTIONAL)

SUGGESTED BLOCK HEATER CONDUIT LOCATION (OPTIONAL)

300-350kW DOOSAN GENERATOR

8X Ø25.4 [1.00] MOUNTING HOLES

300-350kW DOOSAN ENCLOSURE W/LIFTING BASE

REV	DATE	ON COMPOSITE DWGS. SEE PART NO. FOR REVISION LEVEL	BY
-	6-2-11	NEW DRAWING [90394]	GFR
A	11-25-13	(C-3) DIM'S TO HOLES ADDED [CT64662]	SAM
B	7-17-17	SEE SHEET 1 & 2 [CT175008]	CCL
C	03JULY2020	SEE SHEET 1 [CT205196]	RSG

UNLESS OTHERWISE SPECIFIED -	
1) DIMENSIONS ARE IN MILLIMETERS	
2) TOLERANCES ARE:	
X.XX ± 0.25	
X.X ± 1.0	
X ± 1.5	
ANGLES ± 0° 30'	
THIRD ANGLE PROJECTION	MAX.
APPROVALS	DATE
DRAWN GFR	6-2-11
CHECKED JMS	6-2-11
APPROVED AJD	6-2-11

KOHLER CO. METRIC PRO-E

POWER SYSTEMS, KOHLER, WI 53044 U.S.A.

THIS DRAWING IN DESIGN AND DETAIL IS KOHLER CO. PROPERTY AND MUST NOT BE USED EXCEPT IN CONNECTION WITH KOHLER CO. WORK. ALL RIGHTS OF DESIGN OR INVENTION ARE RESERVED.

TITLE: **DIMENSION PRINT**

SCALE: 0.07 CAD NO. SHEET 3 of 3

DWG NO. **ADV-8162**

D