

# KD SERIES

## EPA TIER 4 FINAL



**KOHLER®**

# KD SERIES™

## EPA CERTIFIED TIER 4 FINAL

### THE SIMPLEST TIER 4 GENERATOR ON THE MARKET.

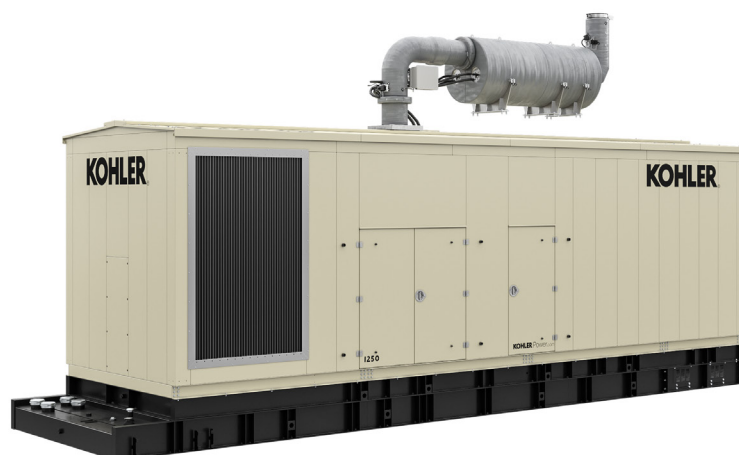
No DPF. No DOC. With only an SCR, we've removed all those complicated aftertreatment specifications. Not only that, since these generators are built for prime power and peak shaving, your clients can save big on utility bills.

### THE NECESSITY OF TIER 4

#### Nonemergency

Since 2014, all stationary nonemergency generators operating in the U.S. must be powered by an EPA Certified Tier 4 Final engine. Common stationary nonemergency generator applications include:

- Primary Source of Power to Facility
- Peak Shaving
- Curtailment/Interruptible Rate Programs
- Supplying Power to Electrical Grid



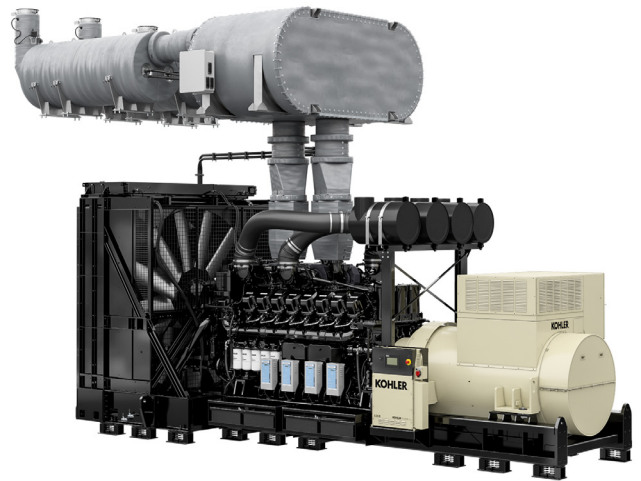
### KD SERIES TIER 4 FINAL

- Certified Tier 4 Final
- Simple Selective Catalytic Reduction (SCR) only solution. No Diesel Particulate Filter (DPF) or Diesel Oxidation Catalyst (DOC) required
- Open or enclosed units—Only Kohler offers factory direct Tier 4 packaged units above 1000KW
- KD3250-4 is largest Tier 4 unit in the market

MODEL	ESP Rating (kWe)	PRP Rating (kWe)	COP Rating (kWe)	Engine	Open / Enclosed
KD1250-4	1250	1120	934	K135 16V	Open / Enclosed
KD2500-4	2500	2270	1892	K175 12V	Open / Enclosed
KD3250-4	3250	2950	2460	K175 16V	Open

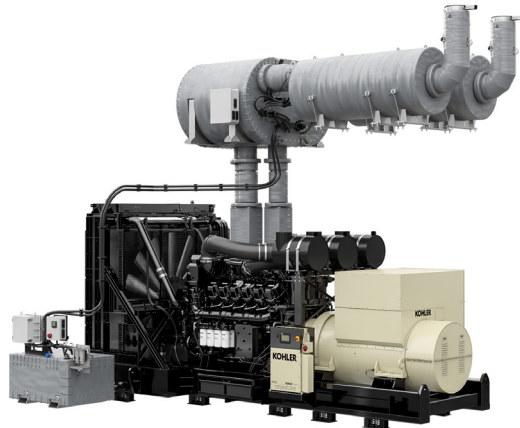
## WHY KOHLER KD SERIES™ TIER 4?

- Simplest system in the industry
- No need for:
  - DOC or DPF
  - Regeneration
  - Compressed air
  - Additional sound attenuation
- KOHLER Tier 4 EATS (Engine Aftertreatment Systems):
  - Addresses PM in-cylinder
  - NOx addressed with SCR
- Engine ECU and integrated sensors control all aspects of EATS
- Allows greater flexibility for installations



## OPEN CONFIGURATION

- Base generator remains unchanged from Tier 2 configuration
- All base generator options available from Tier 2 units
- Available with APM603 controller only
- EATS is essentially an exhaust accessory
- Supports and platforms sold separately



## ENCLOSED CONFIGURATION

In addition to open unit features, enclosed configurations offer

- Factory packaging available for KD1250-4 and KD2500-4
  - SL2 enclosures only
  - Diesel fuel state tank is standard
    - KD1250-4 (24- or 48-hour)
    - KD2500-4 (24-hour)
- Locates DEF tank and lines
- Correctly sizes DEF and diesel tanks
- All enclosure add-on items are compatible (lights, dampers, etc.)
- Service box for EATS control and filter access





For more information, contact your KOHLER source of supply.  
Or call toll-free in the U.S. and Canada 800-544-2444.

**KOHLER®**

**KOHLERPOWER.COM**  
PRINTED IN U.S.A. G12-515 12/21 © 2021 KOHLER CO.