



KOHLER®

Command PRO® EFI

| Gasoline Engines

24.2 – 28.3 kW | 32.5 – 38 hp

The KOHLER® Command PRO® EFI engine saves gas and reduces downtime, giving you the power to cut costs and cover more ground every day.

The *muscle* you need For commercial applications

Whatever the job or power range, the KOHLER® Command PRO® 999 cc engine—models from 32.5 to 38 hp—takes the gas engine to powerful heights of horsepower, torque and reliability. Redesigned to feature the latest engine cooling technology to improve durability.



PROVEN DURABILITY
AND RELIABILITY



EXCEPTIONAL PERFORMANCE



EASY TO MAINTAIN

*Class defined as EPA Class I gasoline engines 225 cc or below.

Command PRO®

Standard features

HYDRAULIC VALVE LIFTERS
FOR QUIET OPERATION,
NO ADJUSTMENTS

HIGH-EFFICIENCY FAN AND
SCREEN FOR SUPERIOR
COOLING AND LONGER ENGINE
LIFE

15-AMP CHARGING, REGULATED

FRONT-MOUNT CONTROLS FOR
EASY OPERATION AND OEM
INSTALLATION

EASILY ACCESSIBLE SERVICE
POINTS

FULL-PRESSURE LUBRICANT
WITH FILTER AND OIL

SENTRY™ AUTOMATIC
LOW-OIL/SHUTDOWN SYSTEM

LARGE DUAL DRAINS FOR
FASTER OIL CHANGES

HARDENED CRANK JOURNALS
FOR LONG-LIFE
12-VOLT SOLENOID
SHIFT STARTER

3-YEAR LIMITED WARRANTY

ELECTRONIC IGNITION WITH
HIGH-PERFORMANCE
SPARK PLUGS

SOLENOID FUEL SHUTDOWN
TO LIMIT AFTERBANG

Popular factory options

CANISTER MUFFLERS
WITH RIGHT, LEFT AND
CENTER OUTLETS

FILTER MINDER FOR
HEAVY-DUTY AIR CLEANER

GUARD FOR ROTATING
GRASS SCREEN

ENGINE-MOUNTED CONTROLS
(CH MODELS)

REMOTE OIL FILTER
EXHAUST DEFLECTOR

SPARK ARRESTOR

20- AND 25-AMP
CHARGING SYSTEMS

11/8- AND 17/16-INCH
CRANKSHAFT DIAMETERS

FRONT DRIVE SHAFT

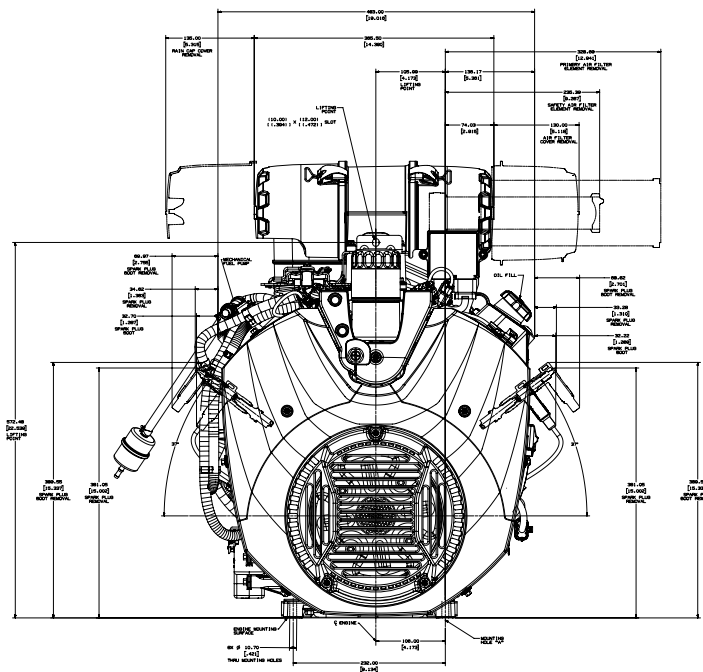
CUSTOMER MOUNTING PILOT
(CH MODELS)

EMC- AND
RFI-COMPLIANT

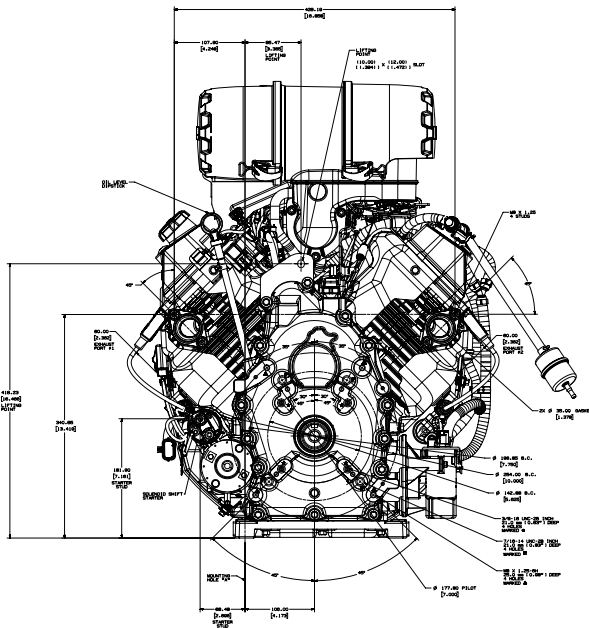


Command PRO®

27–30 HP Horizontal-Shaft Engines*



Front view



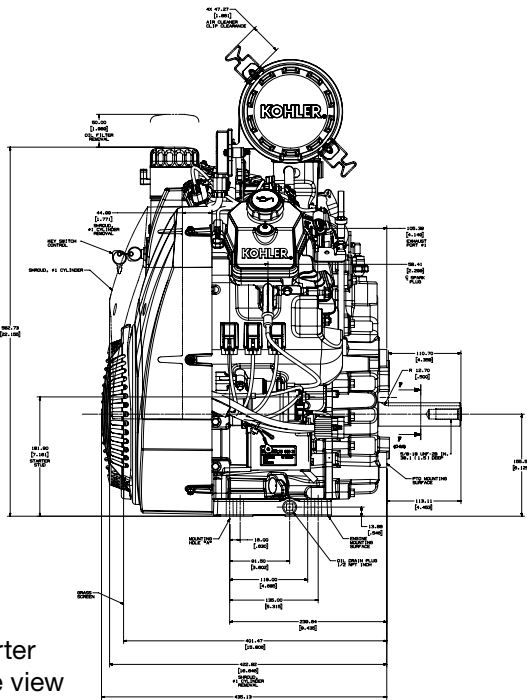
PTO view

MODEL	CH940	CH980	CH1000
POWER @ 3600 rpm Max. hp (kW)	32.5 (24.2)	35 (26.1)	37 (27.5)
DISPLACEMENT cu in (cc)		61 (999)	
BORE in (mm)		3.5 (90)	
STROKE in (mm)		3.1 (78.5)	
PEAK TORQUE @ rpm ft-lb (Nm)	53.5 (71.8) @ 2600	54.3 (73.6) @ 3400	57.4 (77.8) @ 3200
COMPRESSION RATIO		8.8:1	
DRY WEIGHT lb (kg)		131 (60)	
OIL CAPACITY U.S. qt (L)		2.0 (1.9)	
LUBRICATION	FULL-PRESSURE LUBRICATION WITH FULL-FLOW FILTER		
DIMENSIONS L×W×H in (mm)	LOW-PROFILE AIR CLEANER 15.8 X 19.1 X 23.6 (402 X 484 X 600) HEAVY-DUTY AIR CLEANER 17.1 X 19.1 X 27.5 (435 X 484 X 699)		

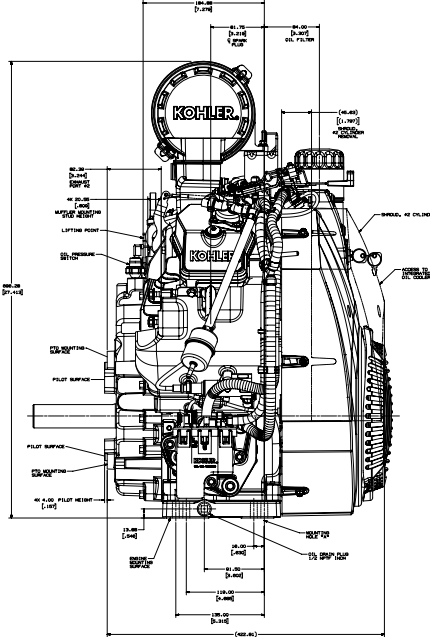
* With Heavy-Duty Air Cleaner

Data

Dimensions (mm)

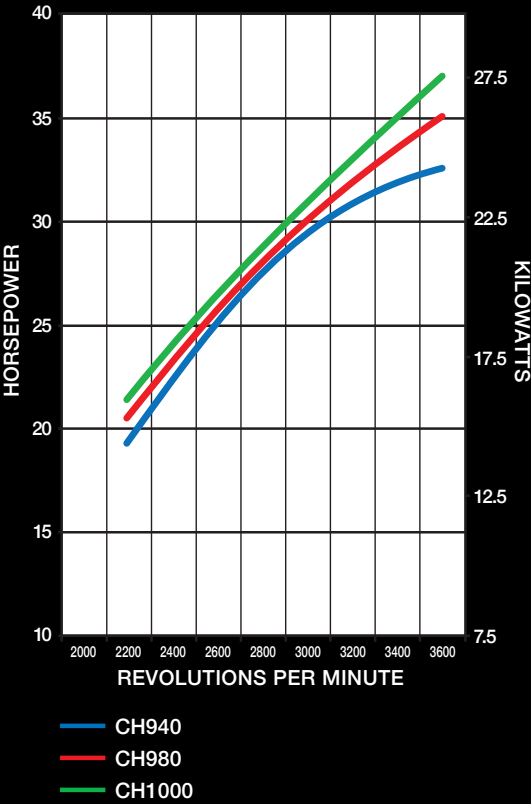


Starter side view

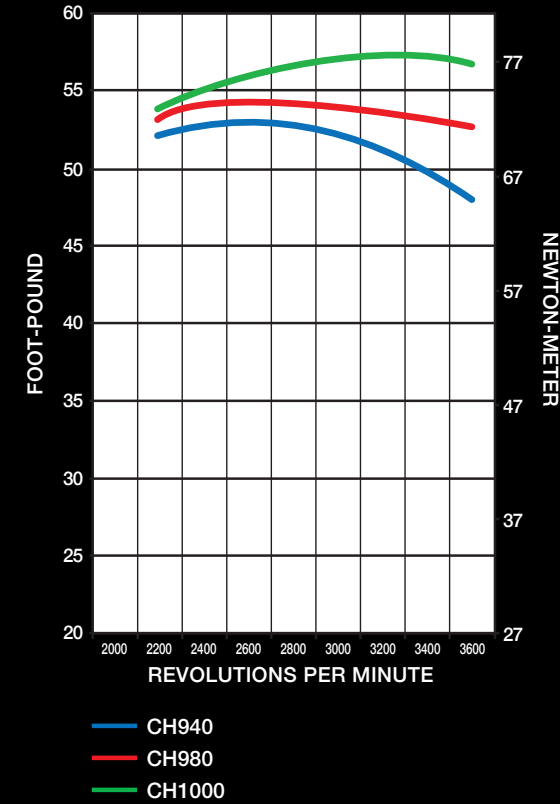


Oil filter side view

Maximum power

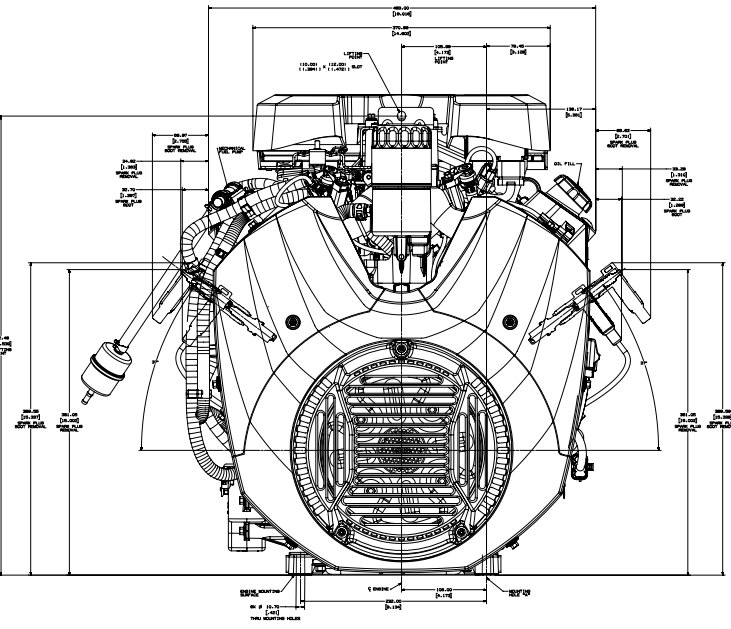


Maximum torque

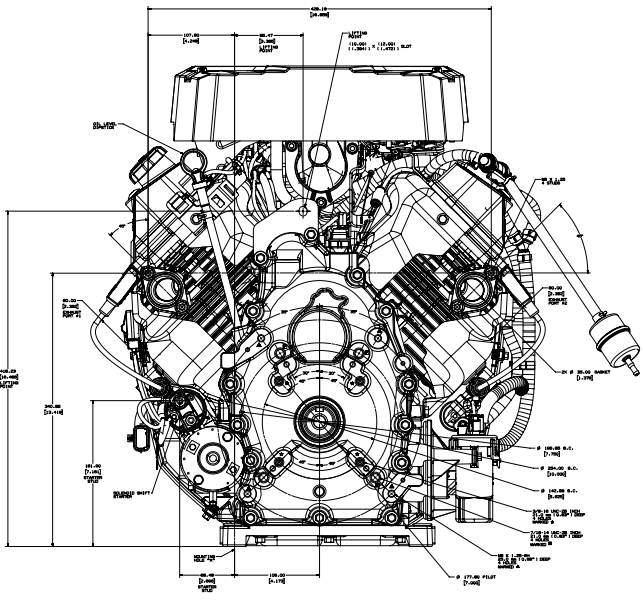


Command PRO® EFI

35–38 HP Horizontal-Shaft Engines*



Front view



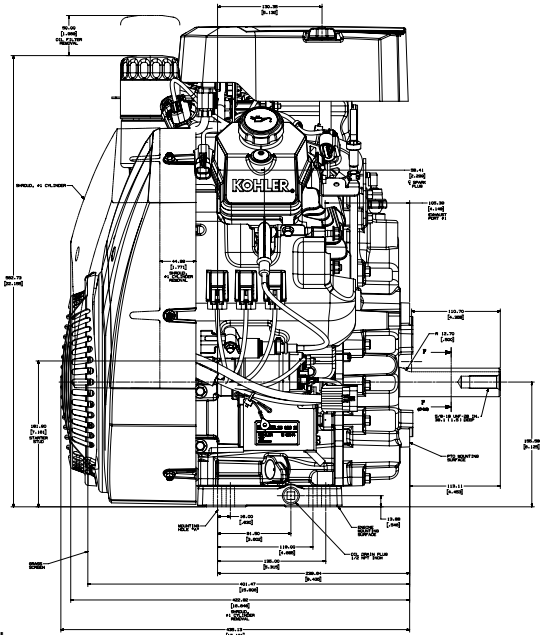
PTO view

MODEL	ECH940	ECH980
POWER @ 3600 rpm Max.hp (kW)	35 (26.1)	38 (28.3)
SHAFT	HORIZONTAL	
DISPLACEMENT cu in (cc)	61 (999)	
BORE in (mm)	3.5 (90)	
STROKE in (mm)	3.1 (78.5)	
PEAK TORQUE @ rpm ft-lb (Nm)	56.0 (75.9) @ 3000	56.0 (75.9) @ 3000
COMPRESSION RATIO	8.8:1	
DRY WEIGHT lb (kg)	132 (60)	
OIL CAPACITY U.S. qt (L)	2.0 (1.9)	
LUBRICATION	FULL-PRESSURE WITH FULL-FLOW FILTER	
DIMENSIONS L×W×H in (mm)	LOW-PROFILE AIR CLEANER 15.8 X 19.1 X 23.6 (402 X 484 X 600) HEAVY-DUTY AIR CLEANER 17.1 X 19.1 X 27.5 (435 X 484 X 699)	

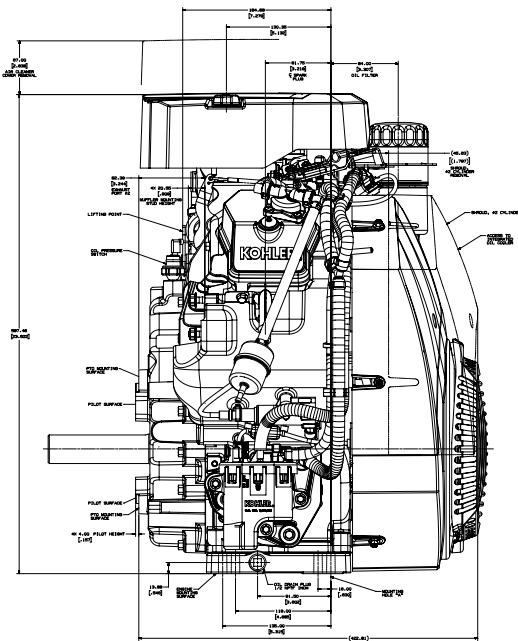
* With Low-Profile Air Cleaner

Data

Dimensions (mm)

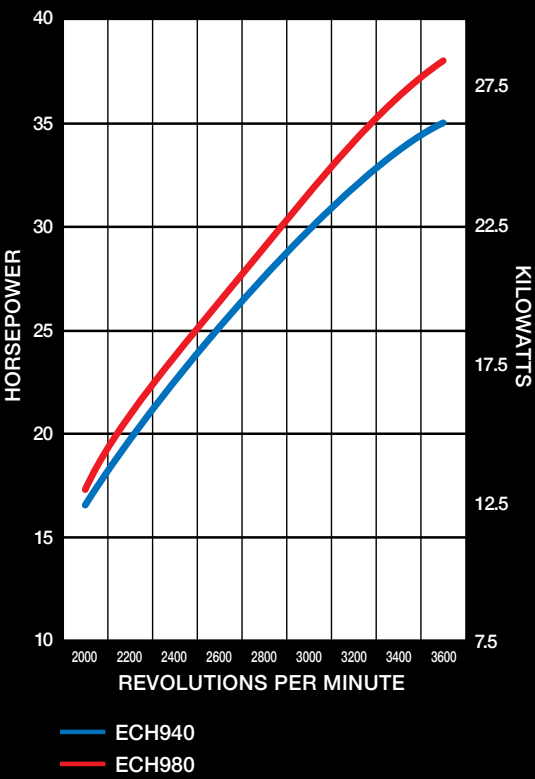


Starter side view

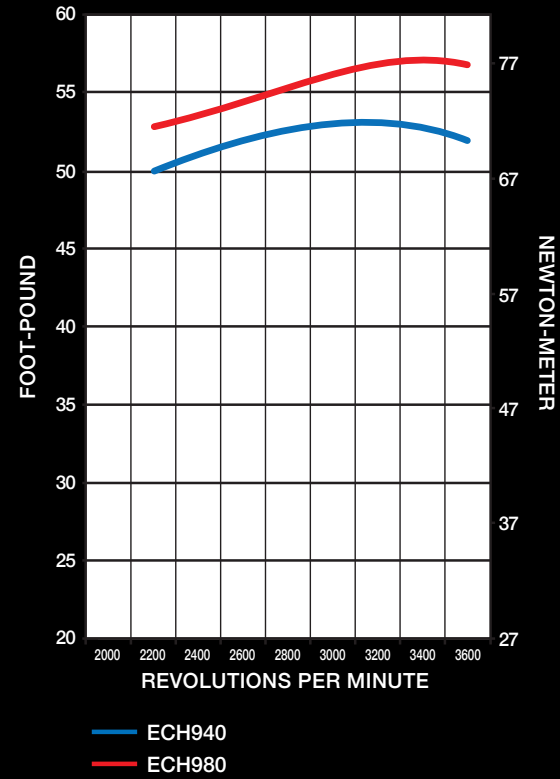


Oil filter side view

Maximum power

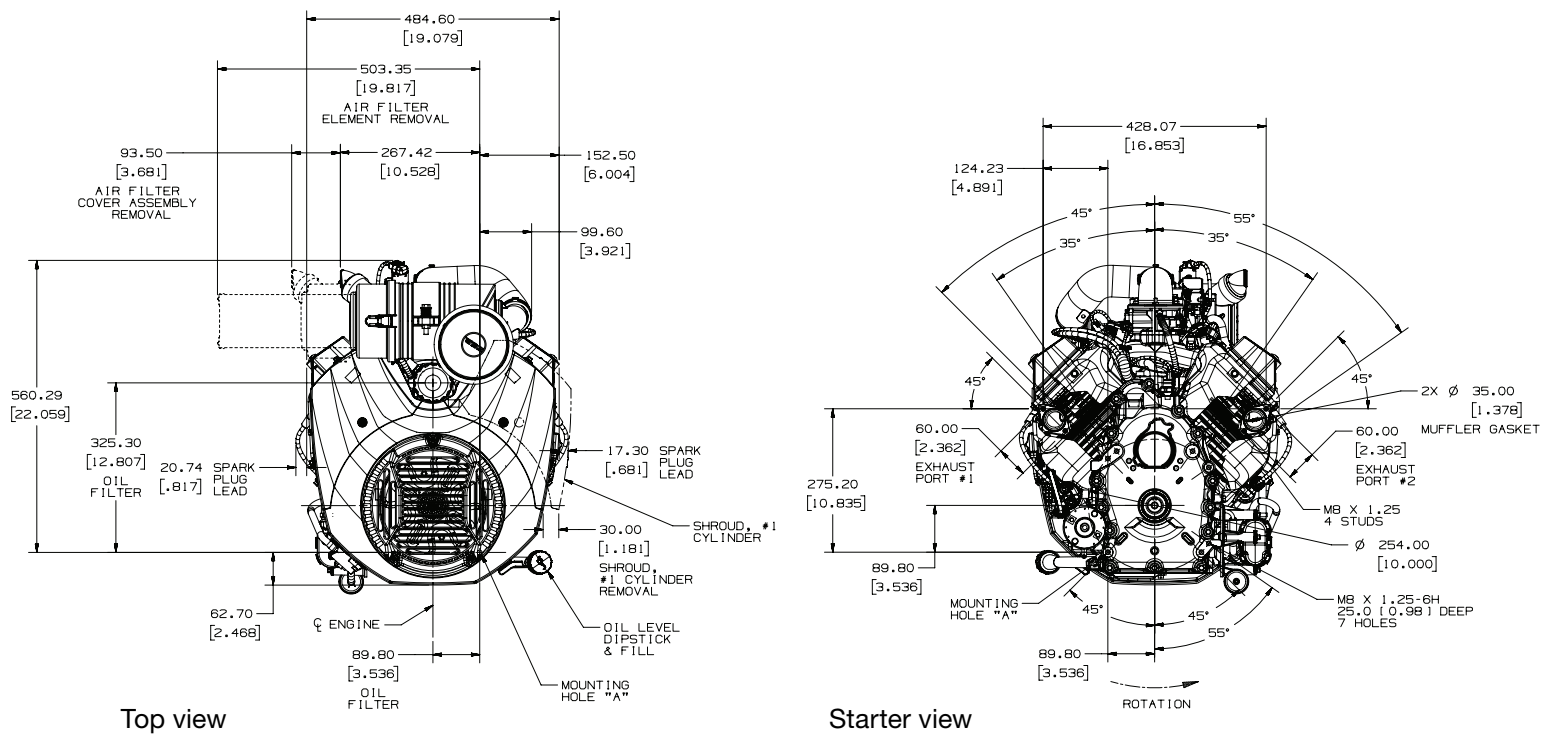


Maximum torque



Command PRO® EFI

35–38 HP Verical-Shaft Engines*

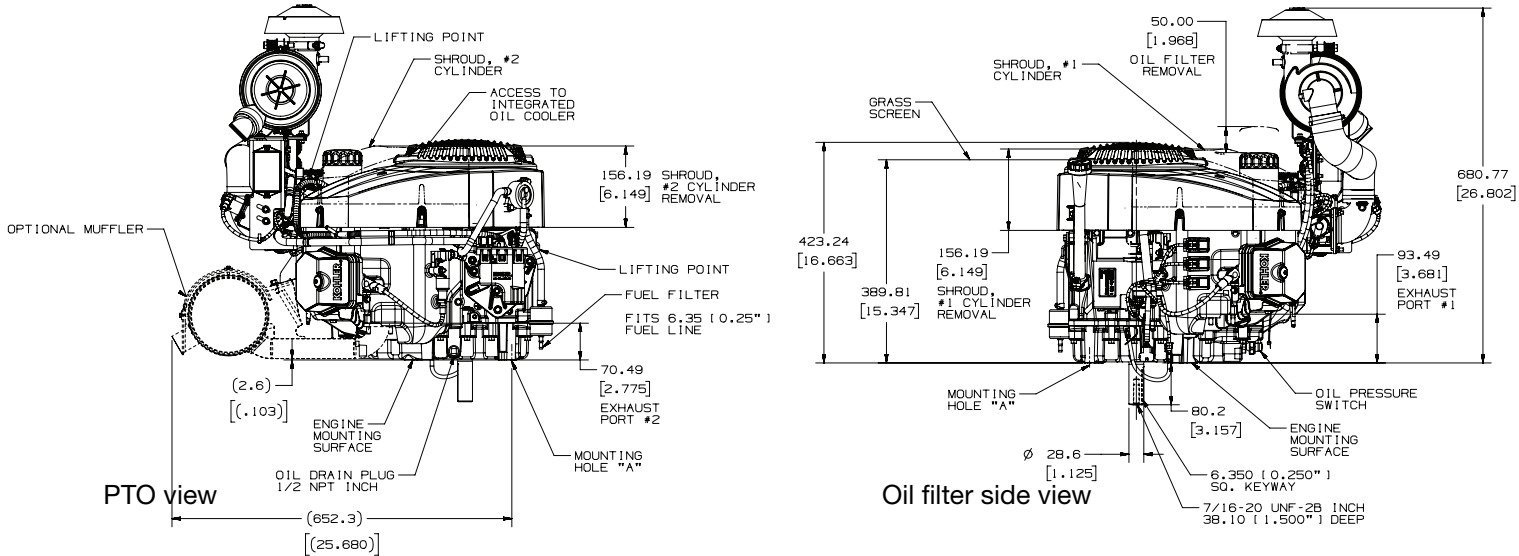


MODEL	ECV940	ECV980
POWER @ 3600 rpm Max.hp (kW)	35 (26.1)	38 (28.3)
SHAFT	VERTICAL	
DISPLACEMENT cu in (cc)	61 (999)	
BORE in (mm)	3.5 (90)	
STROKE in (mm)	3.1 (78.5)	
PEAK TORQUE @ rpm ft-lb (Nm)	53.0 (71.8) @ 3200	56.9 (72.2) @ 3400
COMPRESSION RATIO	8.8:1	
DRY WEIGHT lb (kg)	134 (61)	
OIL CAPACITY U.S. qt (L)	2.0 (1.9)	
LUBRICATION	FULL-PRESSURE WITH FULL-FLOW FILTER	
DIMENSIONS L×W×H in (mm)	22.1 X 19.1 X 26.8 (560 X 485 X 681)	

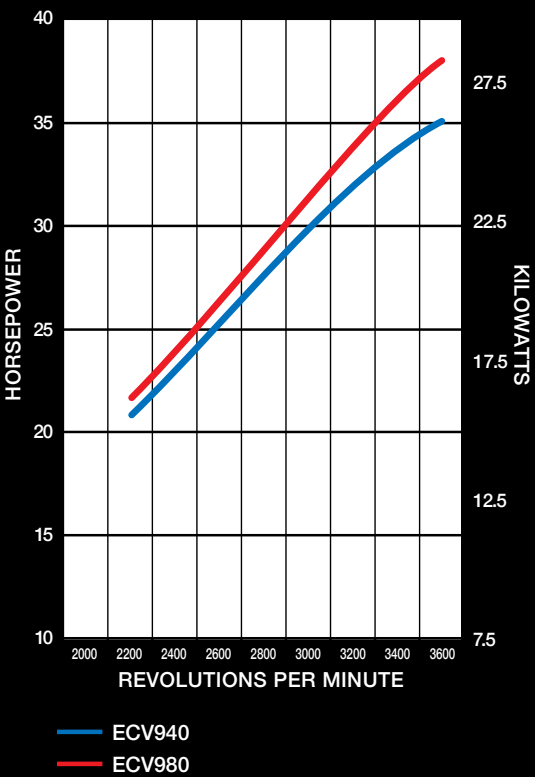
* With Heavy-Duty Air Cleaner

Data

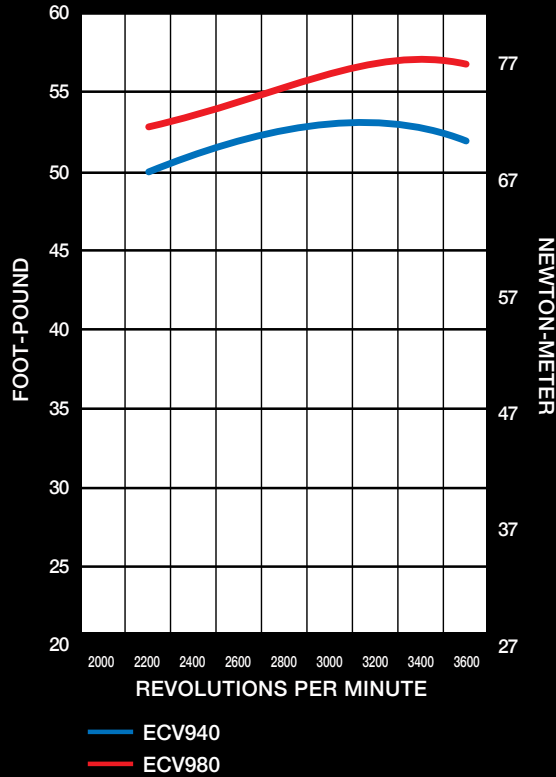
Dimensions (mm)



Maximum power



Maximum torque



For more information, contact your KOHLER source of supply.
Kohler Co. reserves the right to make modifications without prior notice.

KOHLER®

[kohlerengines.com](https://www.kohlerengines.com)

Printed in Italy

ED0035585620

Rev.01 04/23 EN

KOHLER CO.