



## Top-mount single-basin bar sink **B155-1**

### Features

- One faucet hole.
- 5-1/2" depth.
- 2" drain opening.
- Stainless steel with luster bowl finish and a satin deck finish.

### Material

- Premium 20-gauge stainless steel.

### Installation

- Top-mount.

### Recommended Products/Accessories

K-23726 Drain treatment

K-23729 Stainless steel cleaner

### Optional Products/Accessories

7466 Stainless steel sink strainer

7400 Sink Strainer



**ADA**

### Codes/Standards

ASME A112.19.3/CSA B45.4

ADA

ICC/ANSI A117.1

### **STERLING® Warranty - Stainless Steel Sinks**

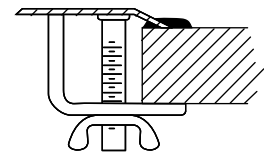
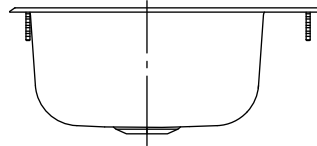
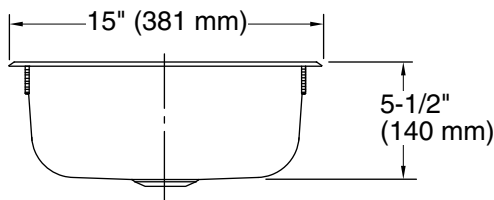
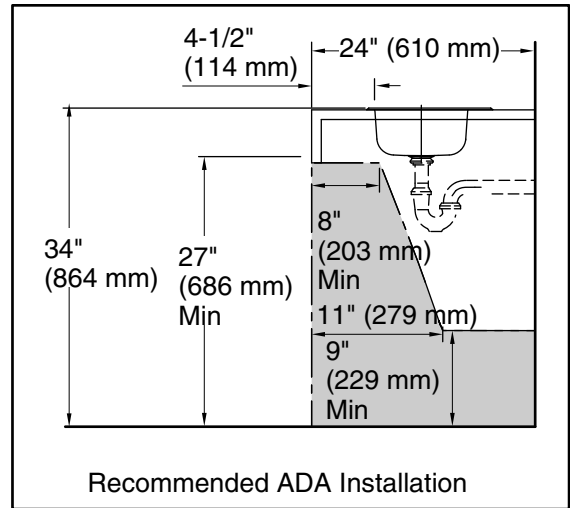
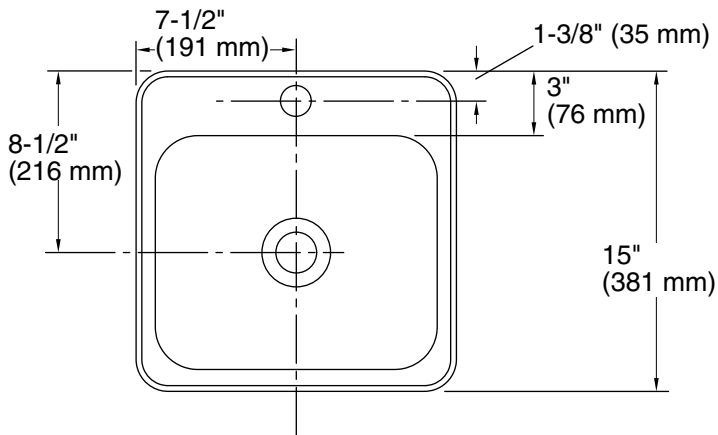
See website for detailed warranty information.

---

1-800-STERLING (1-800-783-7546)

Kohler Co. reserves the right to make revisions without notice to product specifications.

For the most current Specification Sheet, go to [www.sterlingplumbing.com](http://www.sterlingplumbing.com).



Stud Mounting Provides Easy Installation

**Technical Information**

All product dimensions are nominal.

- Installation: Top-mount  
 Bowl area (Only): Length: 13-1/4" (337 mm)  
 Width: 11" (279 mm)  
 Bowl depth: 5-9/16" (141 mm)  
 Water depth: 5-9/16" (141 mm)  
 Number of deck holes: 1  
 Faucet hole(s): 1-7/16" (37 mm)  
 Drain hole: 1-15/16" (49 mm)

**Notes**

Install this product according to the installation instructions.  
 ADA compliant when installed to the specific requirements of these regulations.