



**Lawson®**  
60" x 36" Vikrell® drop-in bath  
**71271100**



**Features**

- 20" bath depth
- Durable high-gloss finish
- Reversible drain can be installed as left- or right-hand drain
- Two optional aprons available (with and without front access panel)
- Optional flange kit available for easier conversion to alcove installation. Kit provides continuous rim support and added water containment benefits compared to nonflanged alcove installation

**Material**

- Made from solid Vikrell® material for strength, durability, and lasting beauty

**Installation**

- Drop-in

**Recommended Products/Accessories**

71268100 Bath apron  
76268100 Bath apron with removable access panel  
K-23726 Drain treatment  
K-23733 Vikrell® cleaner



**Codes/Standards**

CSA B45.5/IAPMO Z124  
ASTM E162  
ASTM E662  
HUD, UM Bulletin 73


**STERLING® Vikrell® or Acrylic Baths  
and Shower Bases Ten-Year Limited  
Warranty**

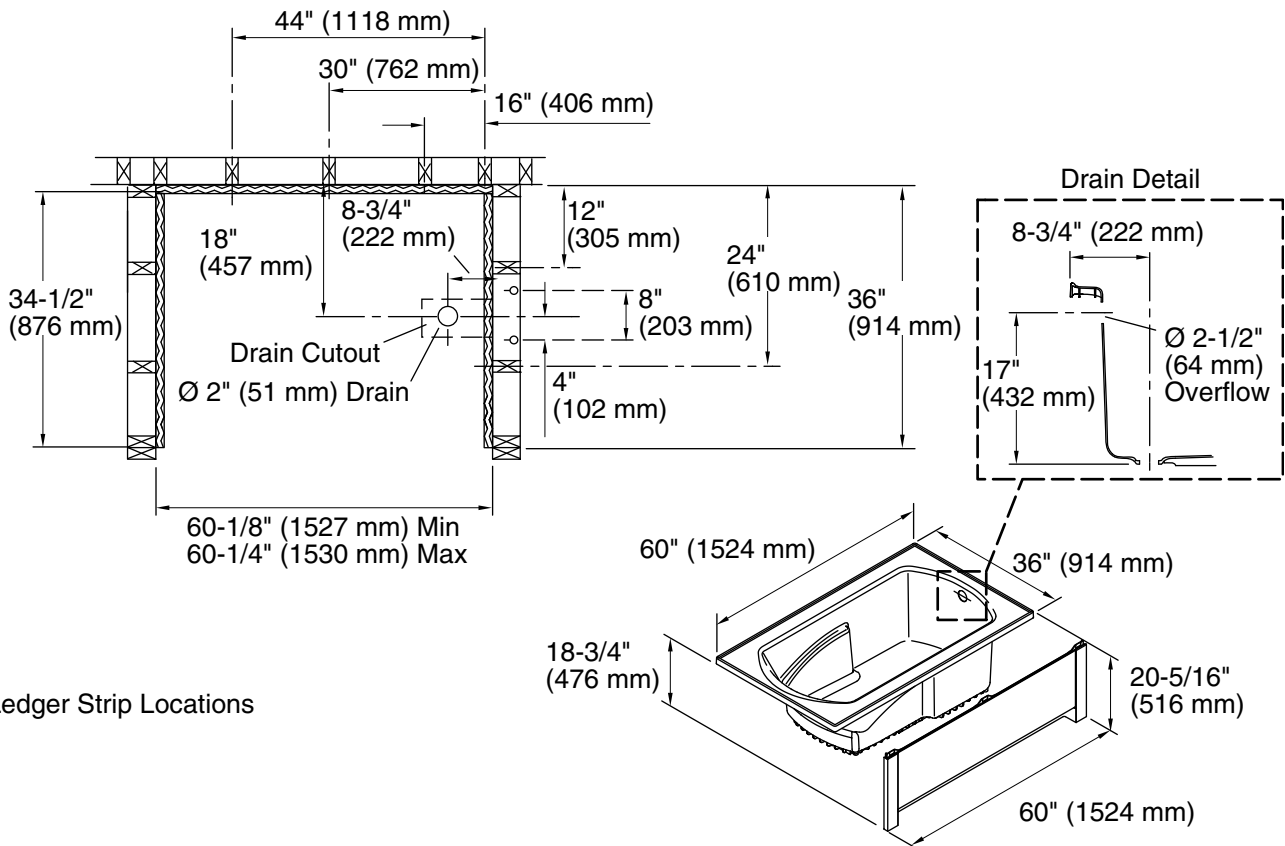
See website for detailed warranty information.

**Available Colors/Finishes**

*Color tiles intended for reference only.*

**Color Code Description**

	0	White
---	---	-------



Ledge Strip Locations

## Technical Information

All product dimensions are nominal.

Drain location:	Reversible
Basin area, bottom:	44" x 25-1/2" (1118 mm x 648 mm)
Basin area, top:	51" x 26-3/4" (1295 mm x 679 mm)
Water depth:	15-1/4" (387 mm)
Water capacity:	59 gal (223.3 L)
Maximum door width:	60" (1524 mm)

## Notes

Install this product according to the installation instructions.

Studs should be positioned roughly as shown.

Double studding is recommended for pivot shower door installations.