



# Southaven®

## Top-mount Kitchen Sink

### 11404-4

#### Features

- Top-mount.
- Four faucet holes.
- 7"-deep single bowl.
- 3-5/8" drain opening.
- Stainless steel with durable satin finish.
- SilentShield® sound-absorption technology offers quieter performance.

#### Material

- Premium 20-gauge stainless steel.

#### Recommended Products/Accessories

7400 Sink Strainer  
K-6139 Sponge Caddy  
K-23726 Drain treatment  
K-23729 Stainless steel cleaner

#### Included Components

Product consists of:  
1150001 Installation Clips



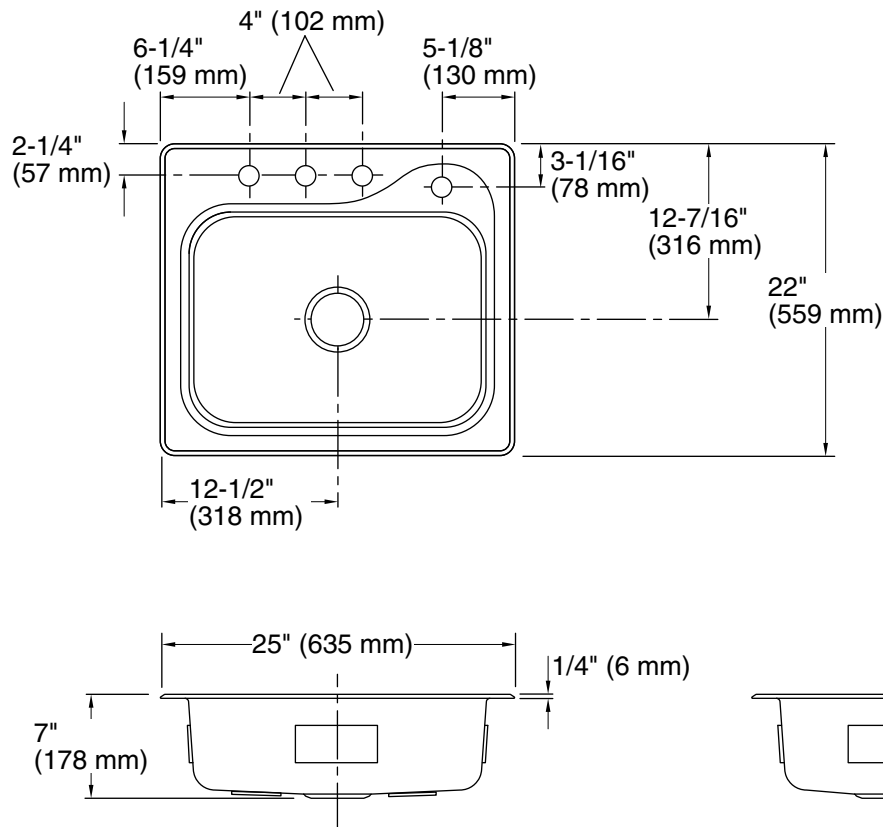
ADA

#### Codes/Standards

ASME A112.19.3/CSA B45.4  
ADA  
ICC/ANSI A117.1

#### STERLING® Warranty - Stainless Steel Sinks

See website for detailed warranty information.



### Technical Information

All product dimensions are nominal.

Bowl configuration: Single

Installation: Top-mount

Cutout: Top-mount, 24-1/2" x 21-1/2" (622 mm x 546 mm) with 1/2" (13 mm) radius corners

Min. base cabinet width: 27" (686 mm)

Bowl area (Only):  
Length: 21" (533 mm)  
Width: 15-1/4" (387 mm)  
Bowl depth: 7" (178 mm)  
Water depth: 7" (178 mm)

Number of deck holes: 4

Faucet hole spacing: 4" (102 mm)

Faucet hole(s): 1-7/16" (37 mm)

Drain hole: 3-5/8" (92 mm)

Template: 1032928-7, not required, not included

### Notes

Install this product according to the installation instructions.

Measure your actual product for roughing-in details.

ADA compliant when installed to the specific requirements of these regulations.

