

July Single Hole Mixing Valves Installation and User Guide

MODEL NUMBERS

16027W-4, 16027W-4ND, 16028W-4, 16044W-4

Important! Please quote the above model number(s) when ordering spares

IMPORTANT

INSTALLER: THIS MANUAL IS THE PROPERTY OF THE CUSTOMER AND MUST BE RETAINED WITH THE PRODUCT FOR MAINTENANCE AND OPERATIONAL PURPOSES.

CONTENTS

General	3
Specification	3
Pressures	3
Plumbing Connections	3
Temperatures	3
Tools Required.....	4
Installation	4
Install the Mixer	4
Install the Drain	4
Finish the Installation.....	5
Operation	6
Low Flow	6
High Flow	6
User Maintenance.....	7
Cleaning	7
Adjust the Maximum Temperature.....	7
Spare Parts	8
Dimensions	10
Notes	11
Customer Care.....	12

GENERAL

Thank you for choosing Kohler Company. Your Kohler Company product reflects the true passion for design, craftsmanship, artistry, and innovation Kohler Company stands for. We are confident its dependability and beauty will surpass your highest expectations, satisfying you for years to come.

All the information in this guide is based upon the latest product information available at the time of publication. At Kohler Company, we strive to fulfil our mission of improving the level of gracious living for each person who is touched by our products and services. We reserve the right to make changes in product characteristics, packaging, or availability at any time without notice.

Please take a few minutes to review this guide. If you encounter any installation or performance problems, please call the Customer Care number on the back page of this guide.

SPECIFICATION

Pressures

The minimum operating pressure is 0.5 bar.

For optimum performance, a minimum operating pressure of 1.0 bar is recommended.

Maximum operating pressure is 5.0 bar.

Plumbing Connections

½" Compression Fitting.

Hot (H) and Cold (C) inlets must be connected to the correct inlet supplies.

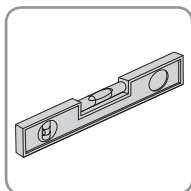
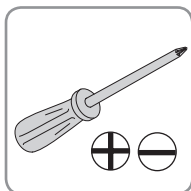
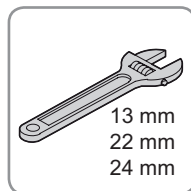
Temperatures

The minimum operating temperature is 55°C.

The maximum operating temperature is 65°C.

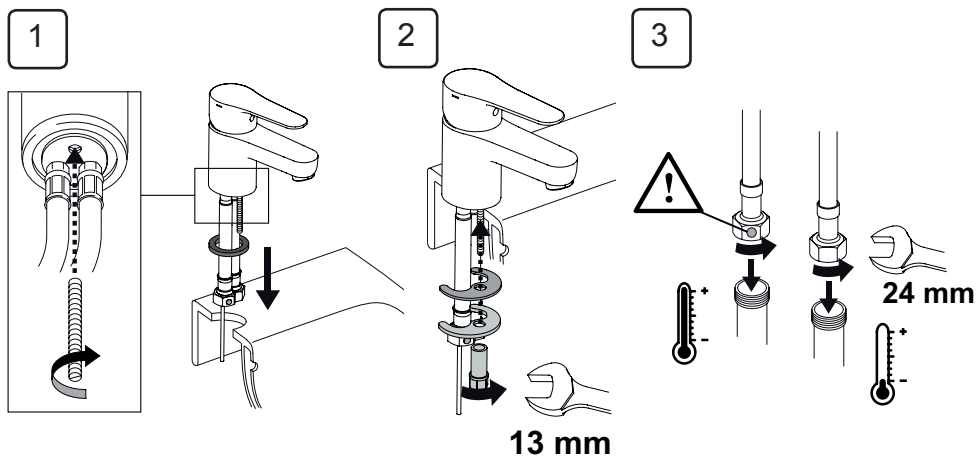
The optimum operating temperature is 60°C.

TOOLS REQUIRED

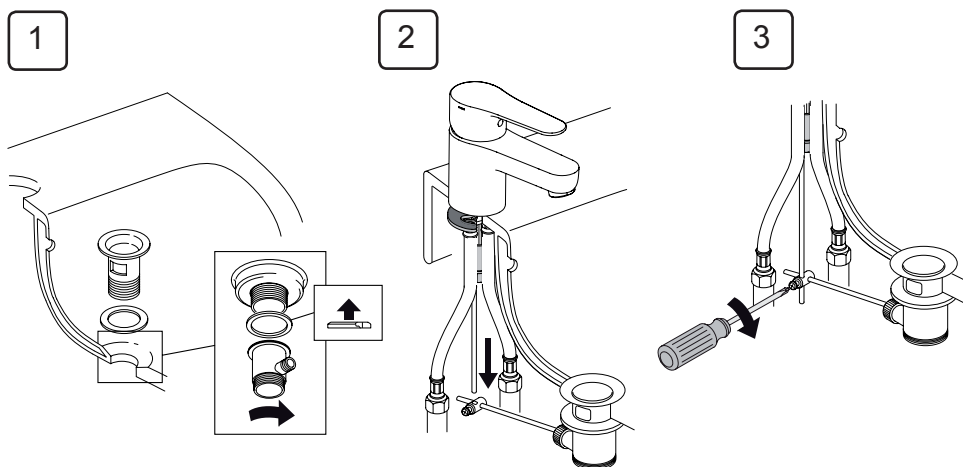


INSTALLATION

Install the Mixer

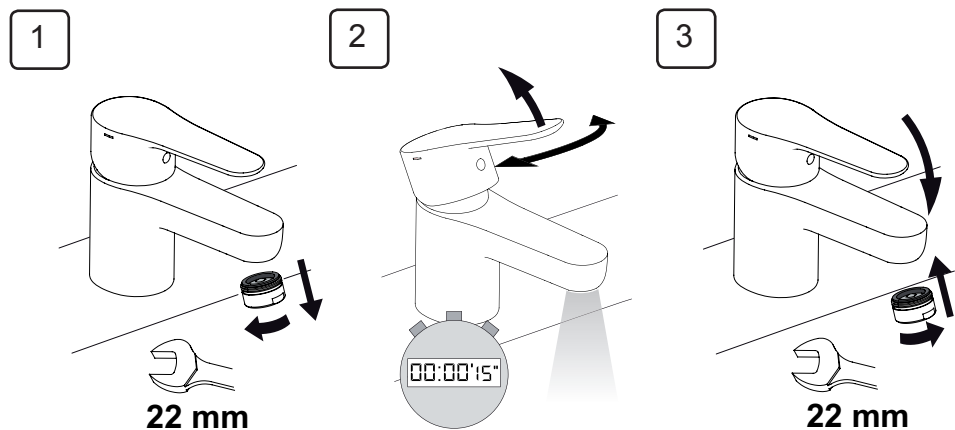


Install the Drain

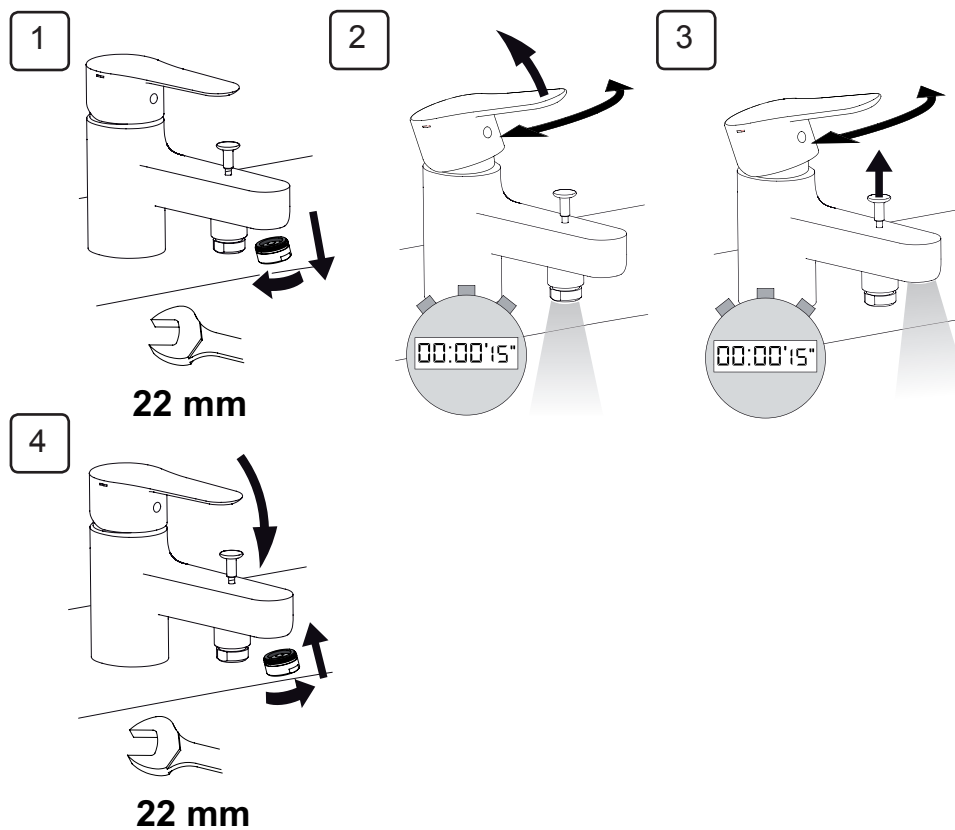


Finish the Installation

16027W-4, 16027W-4ND, 16028W-4



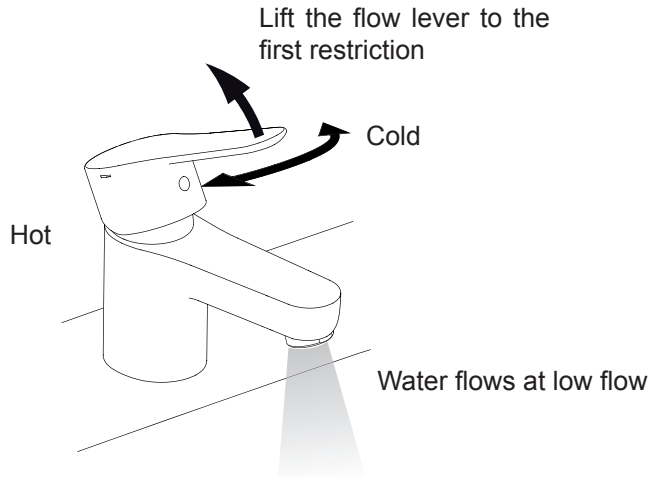
16044W-4



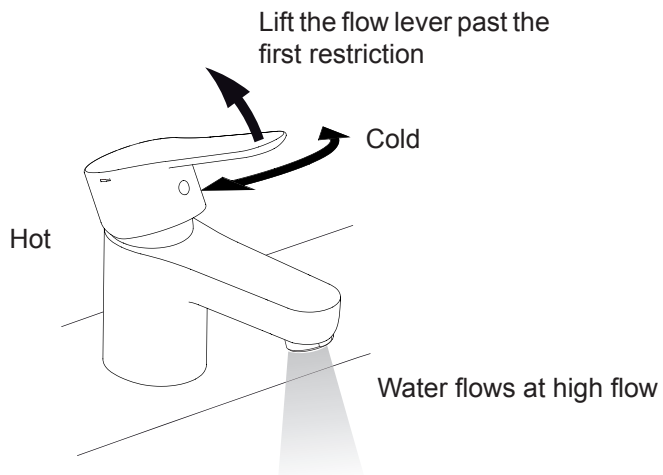
OPERATION

The single hole mixing valve has two stage flow control, which means it can operate at either low flow or high flow.

Low Flow



High Flow



USER MAINTENANCE

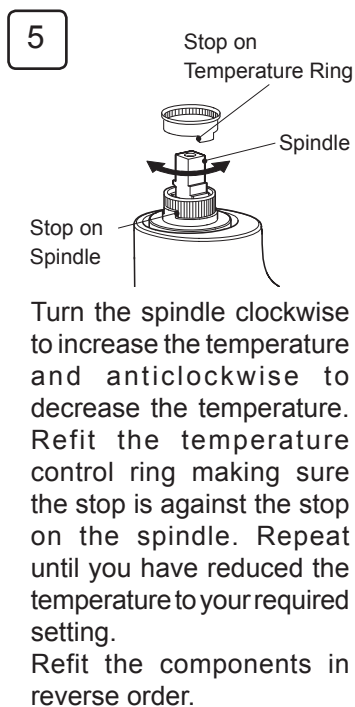
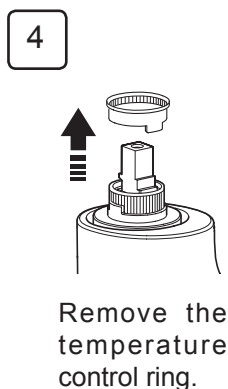
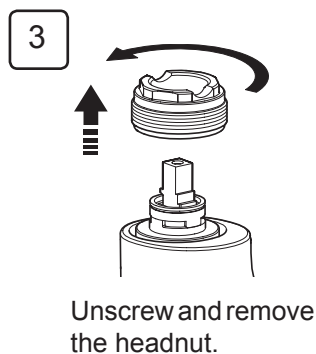
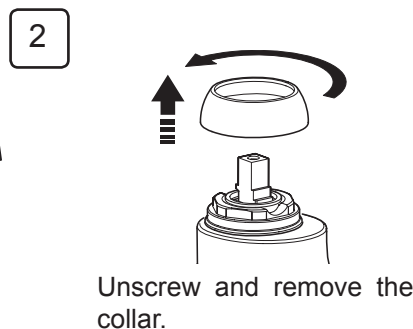
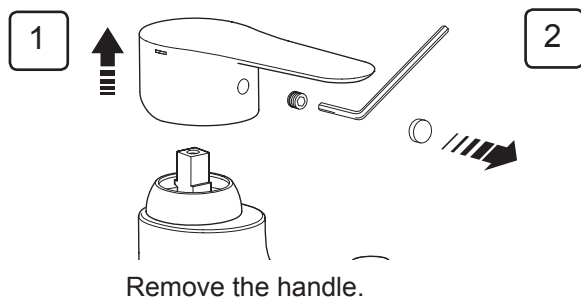
Cleaning

Many household cleaners contain abrasive and chemical substances, and should not be used for cleaning plated or plastic fittings.

These finishes should be cleaned with a mild washing up detergent or soap solution, and then wiped dry using a soft cloth.

Adjust the Maximum Temperature

1. Turn off the water supply.
2. Lift the tap on to relieve any pressure.

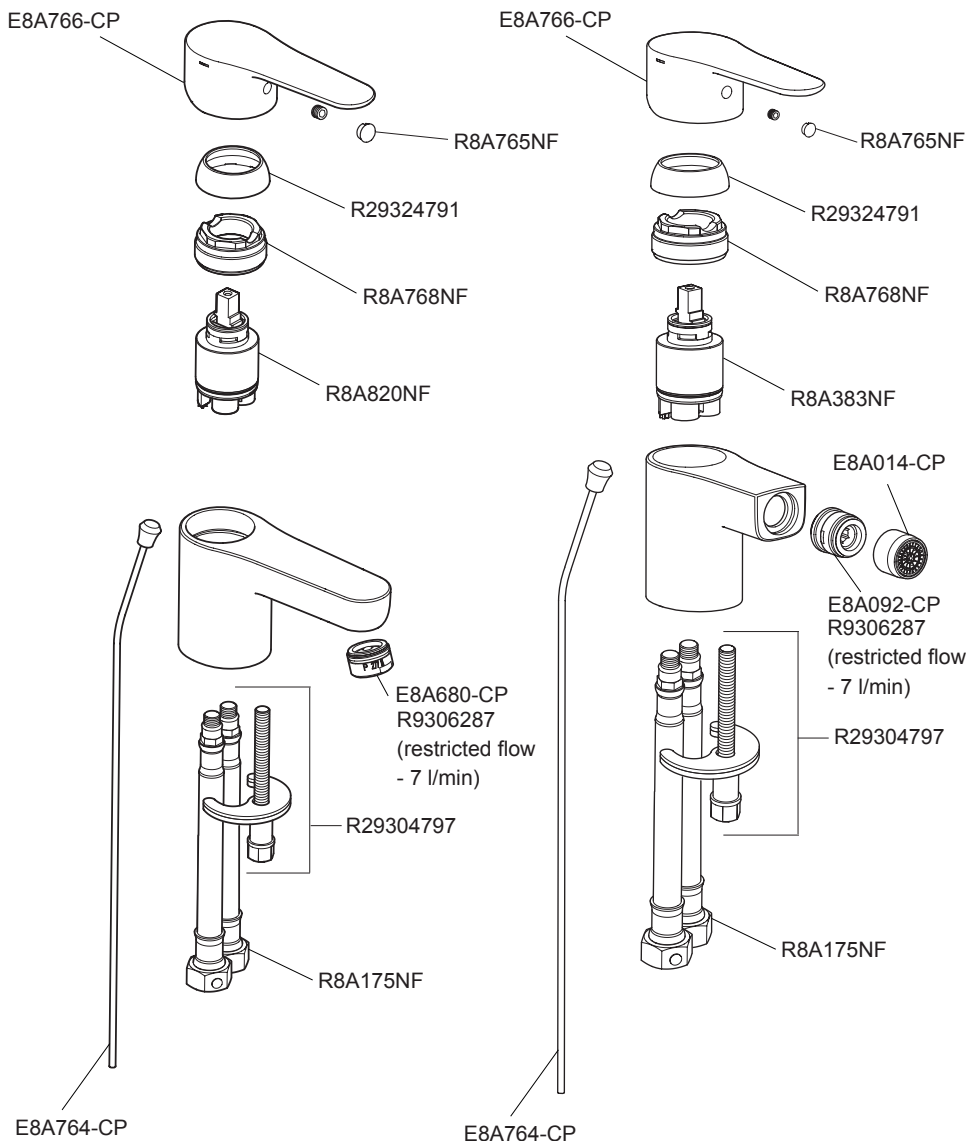


SPARE PARTS

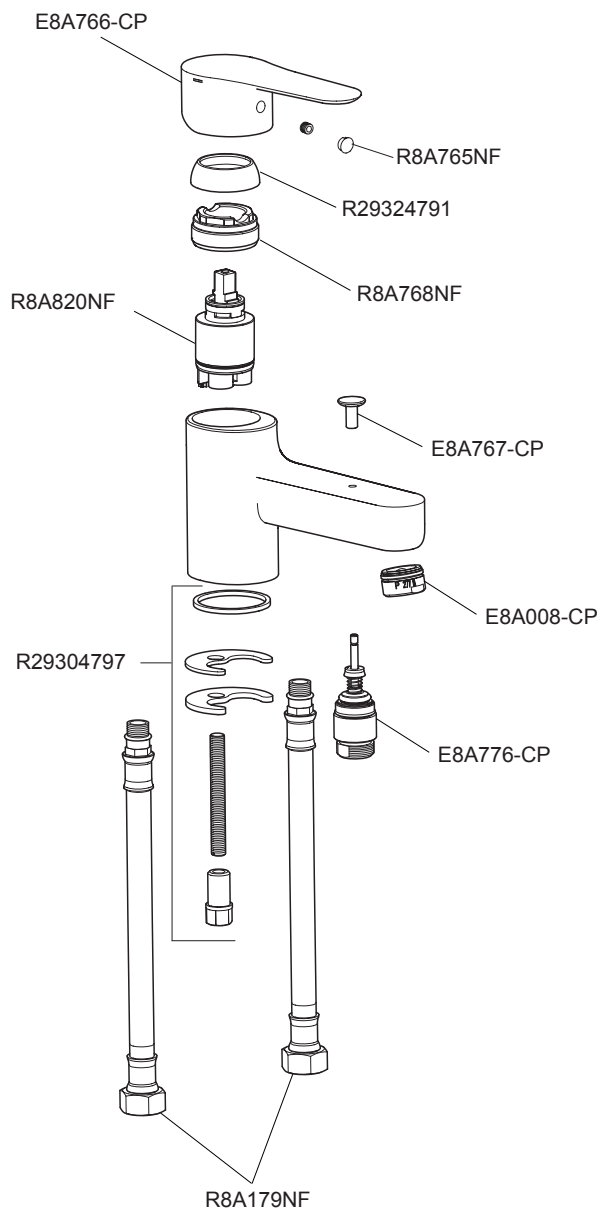
16027W-4 Monobloc Basin Mixer

16028W-4 Monobloc Bidet Mixer

16027-4ND Monobloc Basin Mixer (w/o drain)

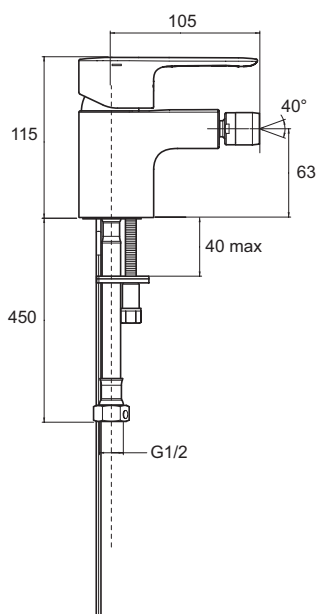
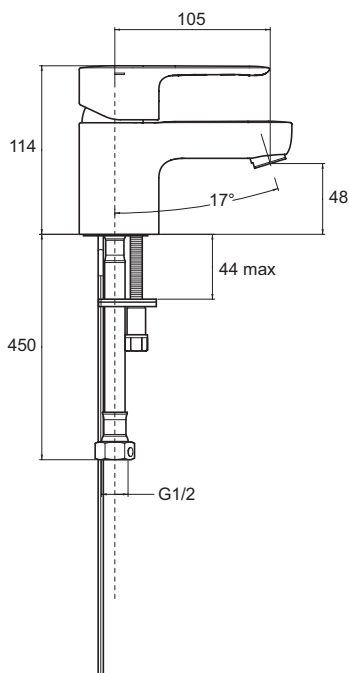


16044W-4 Monobloc Bath Shower Mixer

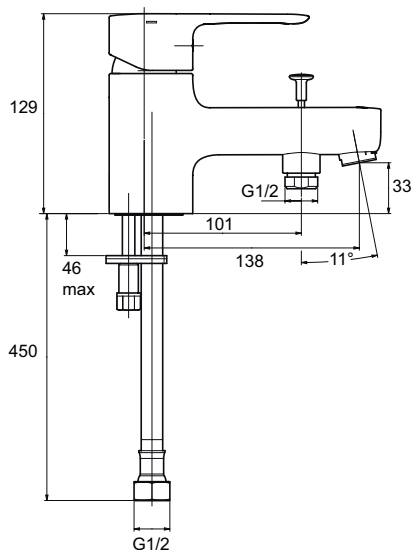


DIMENSIONS

16027W-4, 16027W-4ND (without lift rod) 16028W-4



16044W-4



All Dimensions in mm

1111582-W2-A

NOTES

CUSTOMER CARE

Guarantee of Quality

Kohler UK guarantee products against any defect of materials or workmanship for the following periods

25 Years

Ceramic Ware and Cast Products

10 Years

Stainless Steel Products and, Acrylic Baths

5 Years

Shower Valves, Taps, Cistern
Fittings, Toilet Seats and Bath
Panels

2 Years

Bathroom Furniture and
Accessories

1 Year

Whirlpool / Spa Baths

Our confidence in the quality and reliability of our superior products enables us to offer a comprehensive guarantee for all products.

To register and fully benefit from this guarantee you must return the enclosed product registration card indicating the Kohler items you have purchased.

Within the guarantee period we will undertake to resolve any material defects, by providing replacement parts, modules or complete product, as we deem appropriate. To be free of charge, work must only be undertaken by Kohler UK approved personnel.

To ensure that any problems can be promptly resolved you must contact Kohler UK directly.

Proof of purchase must be provided with any claims.

This guarantee covers products in domestic use, installed and maintained in accordance with the instructions. It covers the purchaser only and is not transferable.

Commercial / Business Use

Any Kohler Bathroom product used within a commercial / business premise is guaranteed for **1 Year** against any defect of materials or workmanship.

Not Covered by this Guarantee

Damage or defects arising from incorrect installation, improper use or lack of maintenance.

Installed product damaged in transit Consequential loss, damage or product removal and installation costs.

General wear and tear.

This guarantee is in addition to your statutory and other legal rights.

To Contact Us

Kitchen and Bathroom Taps and Accessories

Tel: 0870 240 7896

Fax: 01242 282 595

Email: technical@mirashowers.com

Website: www.kohler.co.uk

Showers and Fittings

Tel: 0870 241 0888

Fax: 01242 282 595

Email: technical@mirashowers.com

Website: www.kohler.co.uk

All other Kohler Products

Tel: 0870 850 5551

Fax: 0870 850 5552

Email: info@kohleruk.com

Website: www.kohler.co.uk

Kohler Mira Ltd
Cromwell Road,
Cheltenham GL52 5EP.

The company reserves the right to alter
product specifications without notice.

KOHLER.