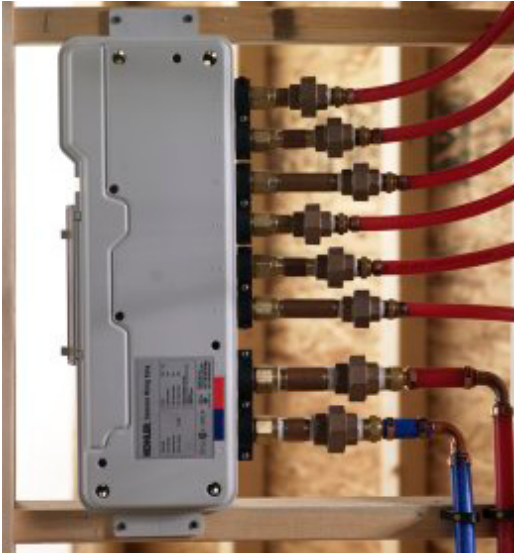


DTV™ 6 - Port Thermostatic Mixer

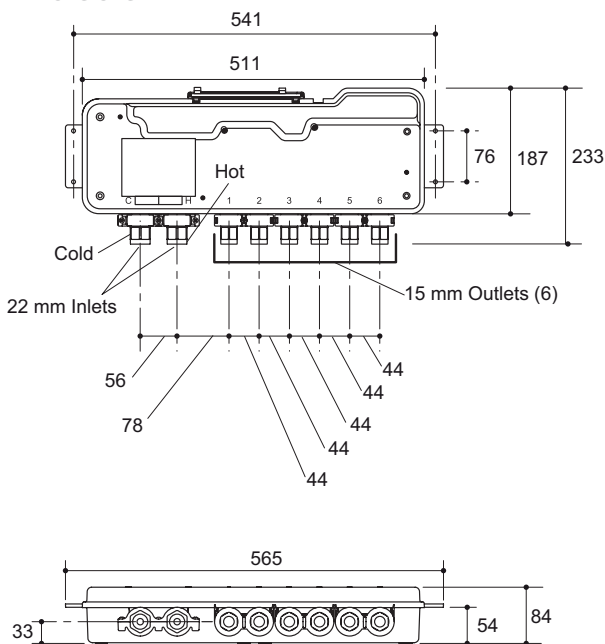
Utilising cutting edge technology to control up to eight showerheads, hand showers and bodyjets, the DTV offers a truly unique and simple to use home-spa showering experience. With pre-defined massage and temperature programmes and six personalised memory settings, it can also be configured to personal preferences. The streamlined digital interface can be installed inside or outside of the showering space using either a portrait or landscape orientated Digital Interface for maximum installation possibilities. An auxiliary Digital Interface enables the user to activate the programme before entering the shower from a different location outside of the showering space.



Product	682W-K DTV™ 6 - Port Thermostatic Mixing Valve
Colours/finishes	None Applicable (-NA)
Material	PC/ABS
Required Accessories	683W DTV™ Digital Interface Landscape - Satin Chrome with polished chrome accents (-1 CP) 684W DTV™ Digital Interface Portrait - Satin Chrome with polished chrome accents (-1 CP)
Optional Accessories	685W DTV™ Digital Interface Landscape - Satin Chrome with polished chrome accents (-1 CP) 686W DTV™ Digital Interface Portrait - Satin Chrome with polished chrome accents (-1 CP)
Supply Pressure	Static pressure range: 1 - 5 bar Supply pressure differential: 0.7 bar
Electrical Connections	3 amp switched fuse spur box required for PSU (1503.654) Plug-in connection from PSU to valve: 12V SELV
IP Rating	IP24
Ambient Temperature	1 - 40°C
Approvals	BEAB

To order, please use the product code and add the colour/finish reference, eg. -NA for None Applicable.

Dimensions



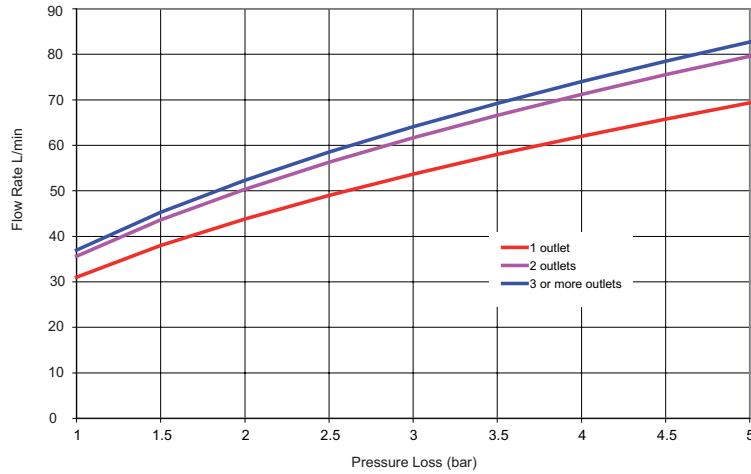
- Install this product according to the installation guide.
- This valve should be used in shower systems only.
- Provide access for servicing valve.
- Use 22 mm supply lines for optimum performance.
- A hot water system capable of providing at least 300 litres is recommended.
- Do not install this valve in walls exposed to subfreezing temperatures.
- Avoid mounting the valve in a wall adjacent to a frequently occupied room, such as a bedroom or living room.
- Pressure regulators are strongly recommended in applications where large pressure swings are anticipated, such as commercial installations with separate hot and cold supply systems.
- Water hammer arrestors and shut-offs are required in both the hot and cold supplies.
- All unused outlets must be plugged.
- A minimum 50 mm drain is recommended.

All measurements shown are in millimetres.
Sizes are approximate.

P5724

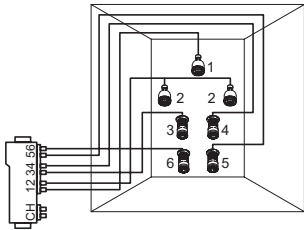
DTV™ 6 - Port Thermostatic Mixer

Flow Rate Graph

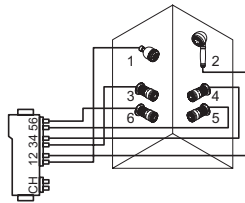


DTV™ Shower Configurations

Frontage

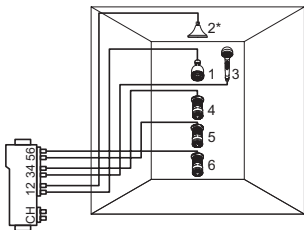


Envelop

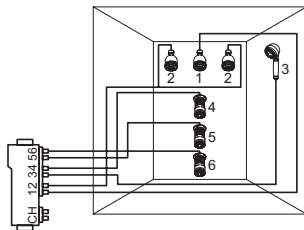


The following showering configurations are available. Other options are possible, but this will limit the preprogrammed massage functions.

Unwind

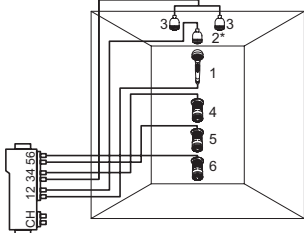


Linear

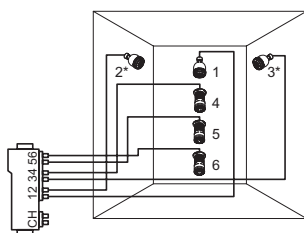


Massage functions that correspond with custom configurations can be programmed. Refer to the User Guide for the DTV Digital Interface.

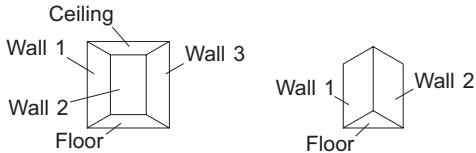
Downpour



Surround



For each of the valve outlets connected to the body sprays the flow rate should be equal..



*These outlets will not cycle even if bodysprays etc. are used

Performance Showering

Up to 8 water outlets (6 separate circuits) with no need for additional divertors. Massage and temperature based programs easily selectable by user.

Safety and Hygiene

Leading edge digital thermostatic technology for comfort and safety. High-temperature limit setting for added safety.