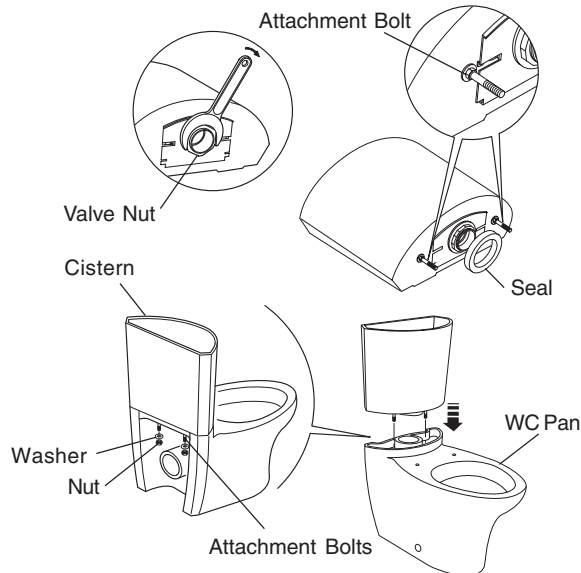


### INSTALLATION

#### Install the Cistern

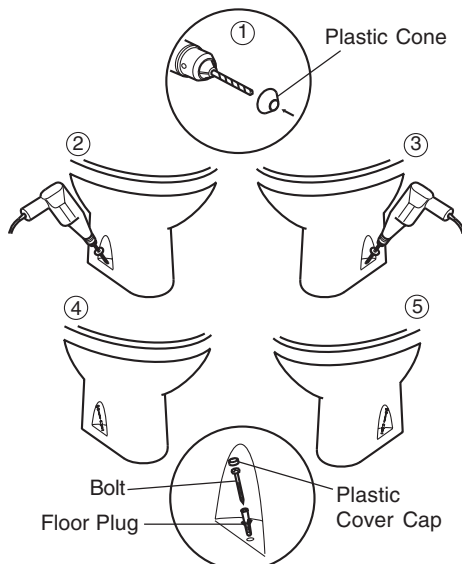
1. Make sure that the toilet is installed by a competent installer.
2. Before installation carefully inspect the new fixture for any signs of damage.



2. Make sure that the valve nut on the base of the cistern is tight.
3. Fit the attachment bolts underneath the metal plate on the bottom of the cistern.
4. Fit the seal to the base of the cistern.
5. Fit the cistern onto the WC, making sure that the seal is in position.
6. Secure the cistern in position with the washers and the nuts.

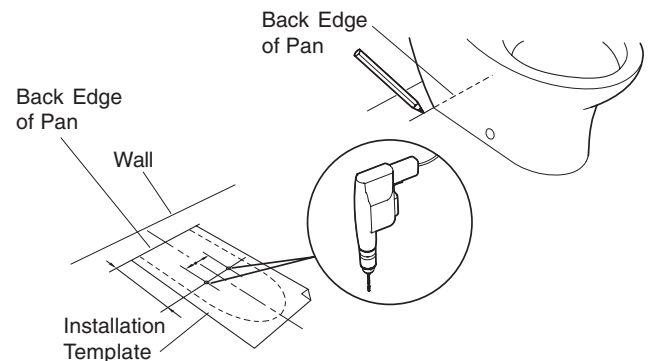
**Note!** The cistern does not need to be fixed to the wall. Fixing of the WC pan to the floor is sufficient.

#### Install the WC Pan (method 1)

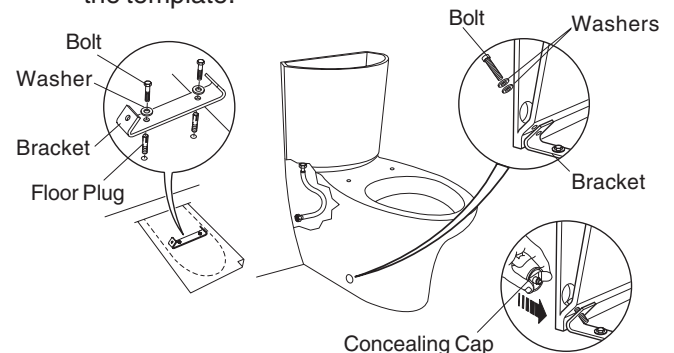


1. Position the WC and install the soil pipe in accordance with the manufacturer's instructions.
- Note!** An inlet isolating valve must be installed to the WC.
2. Put the plastic cone on the 8 mm dia drill, and put the WC pan in position on the floor.
  3. Drill the holes through the WC pan and into the floor.
  4. Secure the WC in position with the floor plugs and bolts. Fit the plastic cover caps over the heads of the bolts.
  5. Connect the inlet water supply to the WC (use 3/8" to 1/2" BSP adaptor supplied).

#### Install the WC Pan (method 2)



1. Put the WC in position and mark a line along the back of the WC.
2. Place the template on the floor, align to the pencil line and secure to the floor.
3. Drill the fixing holes with a 8 mm drill as indicated on the template.



4. Fit the bracket to the floor with the floor plugs, the washers and the bolts.
5. Lift the WC into position over the bracket and connect the waste outlet pipe and the water supply (use 3/8" to 1/2" BSP adaptor supplied)..
6. Secure the WC in position with the washers and the bolts.
7. Fit the concealing caps to cover the bolt heads.

#### Finish the Installation

1. Ensure that all the connections are tight.
2. Turn on the water supply and check for any leaks.
3. Flush the toilet to check for correct operation.