

KOHLER®



17493W-CP



15996W-CP

Flipside Handshower and Showerhead Installation and User Guide

MODEL NUMBERS

17493W-CP, 15996W-CP

Important! Please quote the above model number(s) when ordering spares

IMPORTANT

INSTALLER: THIS MANUAL IS THE PROPERTY OF THE CUSTOMER AND MUST BE RETAINED WITH THE PRODUCT FOR MAINTENANCE AND OPERATIONAL PURPOSES.

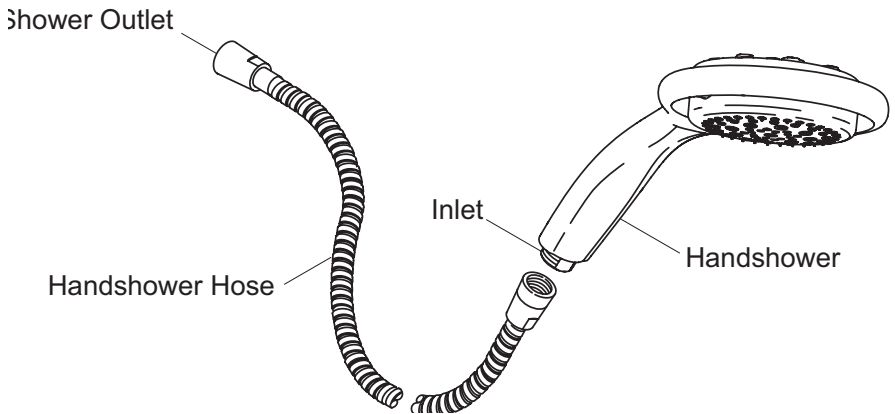
BEFORE YOU BEGIN

1. Turn off the water supply.
2. Make sure that the showerhead is installed by a competent installer.
3. Before installation carefully inspect the new fixture for any signs of damage.
4. Kohler Co. reserves the right to make revisions in the design of products without notice.
5. Observe all the local plumbing and building codes and standards.

INSTALLATION

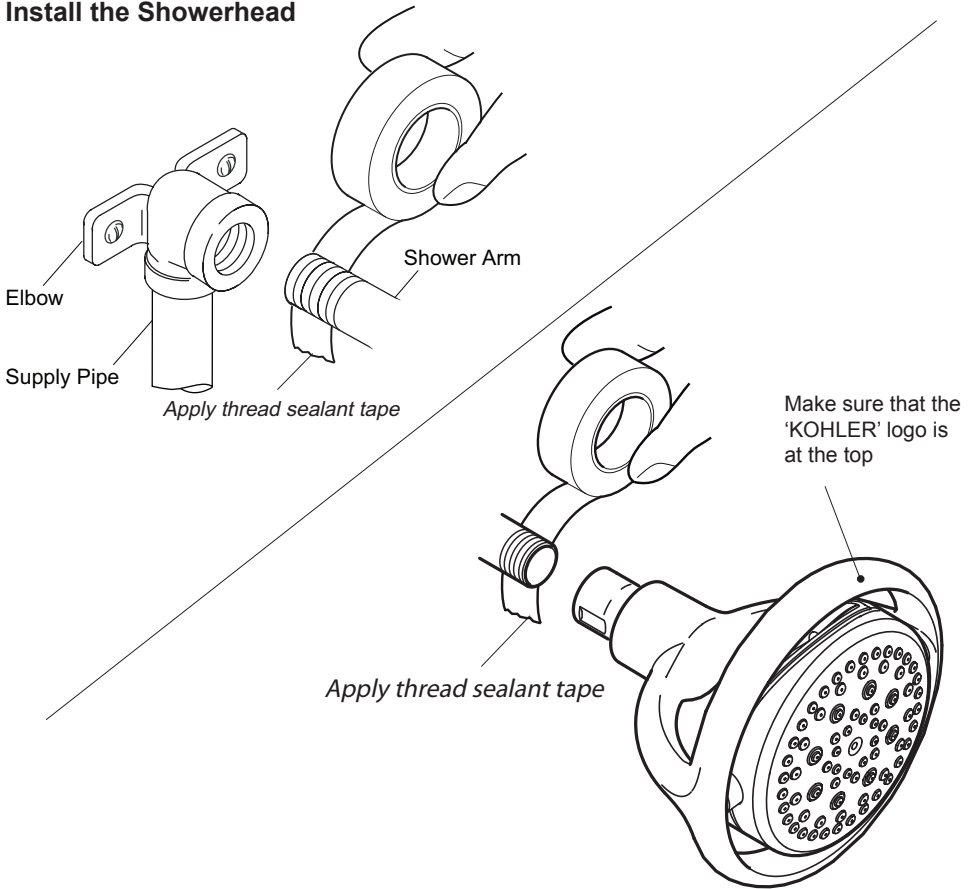
Handshower may differ slightly from the one shown, but the installation method is the same.

Install the Handshower



1. Run water through the shower outlet to flush out any dirt and debris.
2. Tighten the handshower onto the hose until hand tight. Do not overtighten.
3. Install the hose onto the shower outlet.
4. Use a suitable spanner to tighten the hose onto the shower outlet. Do not overtighten.

Install the Showerhead

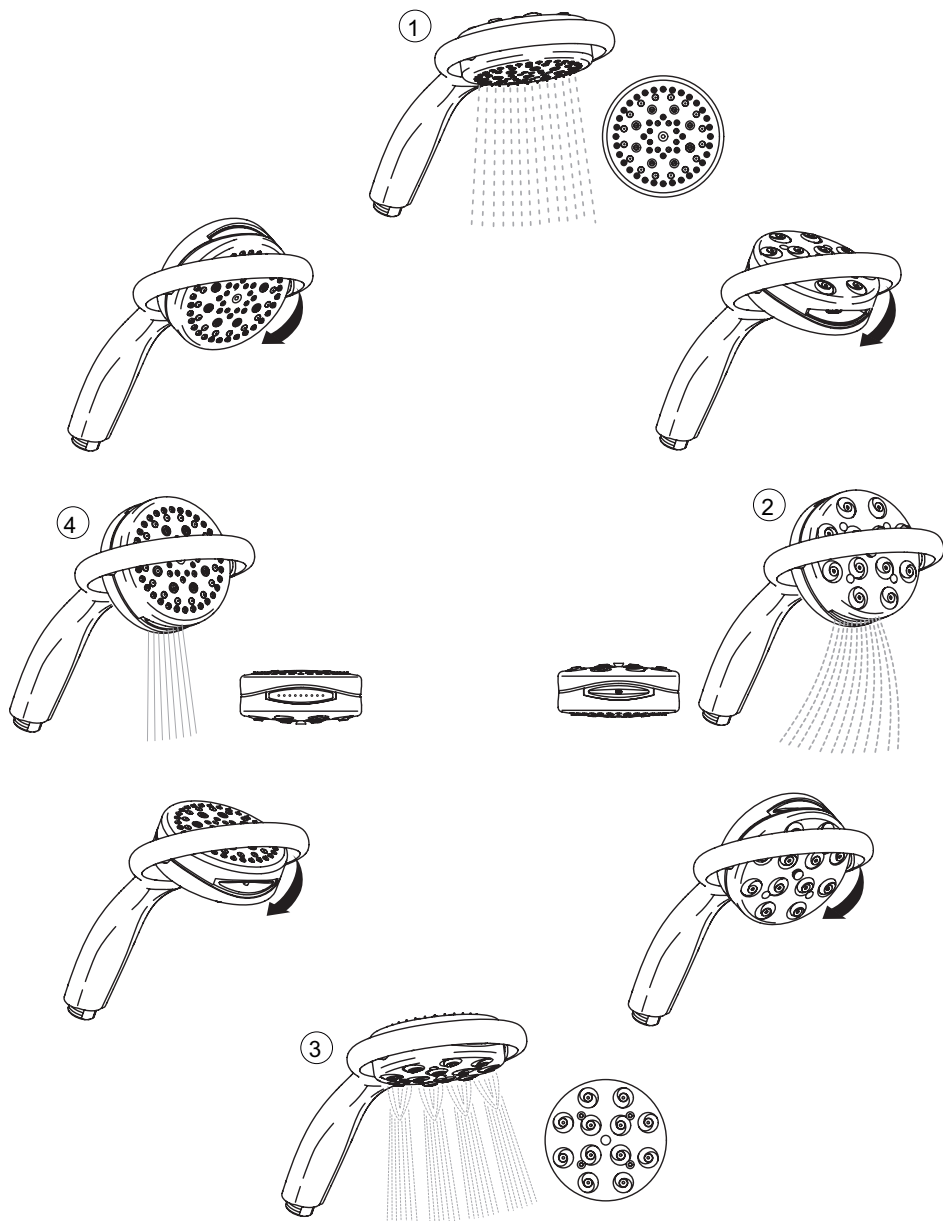


1. Apply PTFE tape over the threaded end of the shower arm. Do not use paste.
2. Turn on the water and allow water to flow through the shower arm to flush out any dirt and debris.
3. Turn off the water.
4. Tighten the showerhead onto the shower arm until hand tight.
5. Use a suitable spanner to tighten the showerhead onto the shower arm. Do not overtighten.

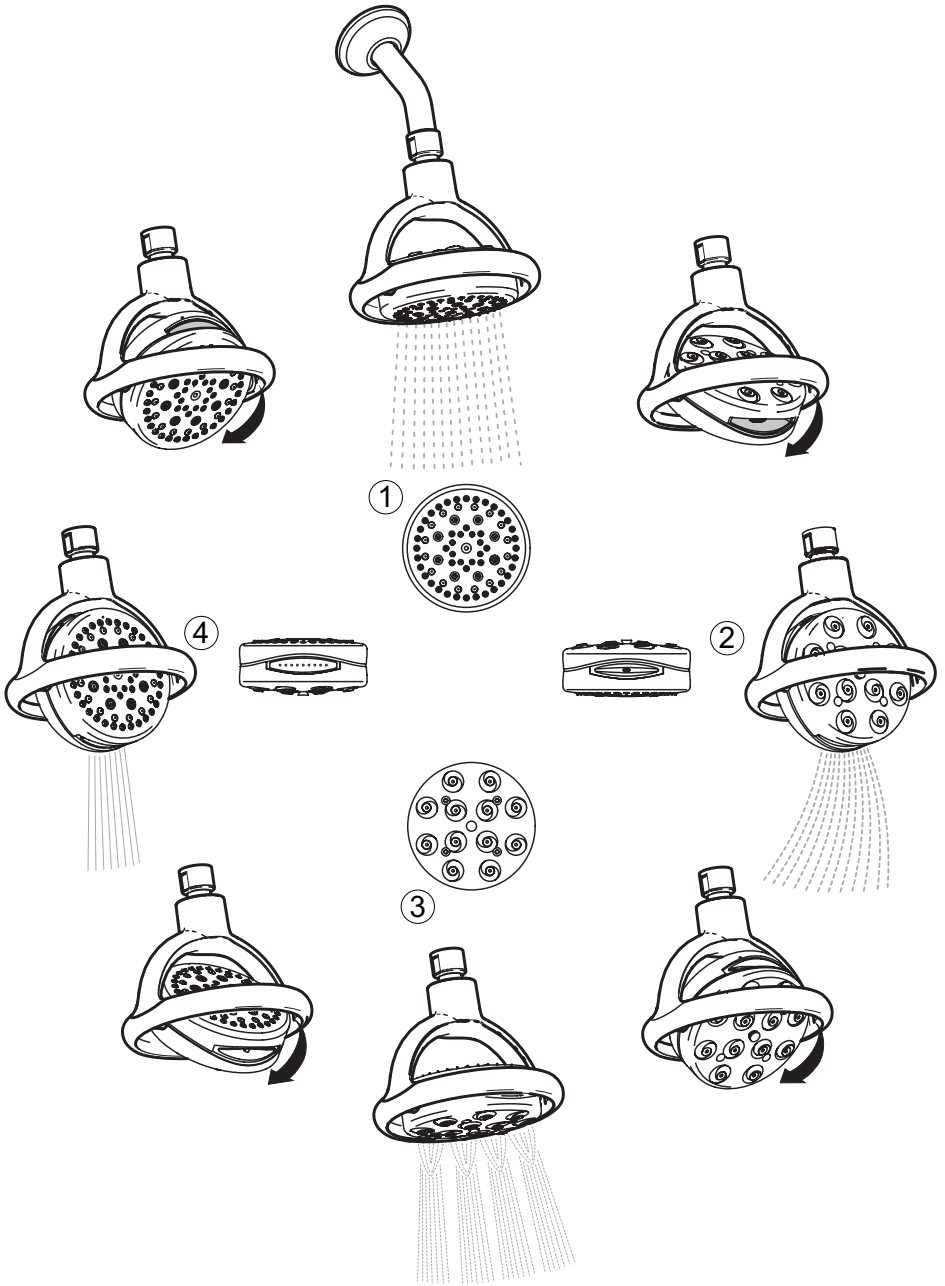
Complete the Installation

1. Turn on the shower valve (not shown).
2. Check for leaks. Make adjustments as required.
3. Rotate the handshower face to verify smooth operation of the spray options.
4. Turn off the shower valve.

OPERATION



Rotate the head of the handshower to change the spray pattern



Rotate the face of the showerhead to change the spray pattern.

FAULT DIAGNOSIS

Symptom:

- *Sprayplate assembly blocked.*

Cause / Rectification:

- *Clean the sprayplate.*
-

Symptom:

- *Drip from sprayplate assembly.*

Cause / Rectification:

- *A small amount of water may be retained in the showerhead after the shower control has been turned off. This may drain over a few minutes. Changing the angle of the showerhead may vary the draining time.*

CARE AND CLEANING

For best results, keep the following in mind when caring for your KOHLER product:

Always test your cleaning solution on an inconspicuous area before applying to the entire surface.

Wipe surfaces clean and rinse completely with water immediately after applying cleaner. Rinse and dry any overspray that lands on nearby surfaces.

Do not allow cleaners to soak on surfaces.

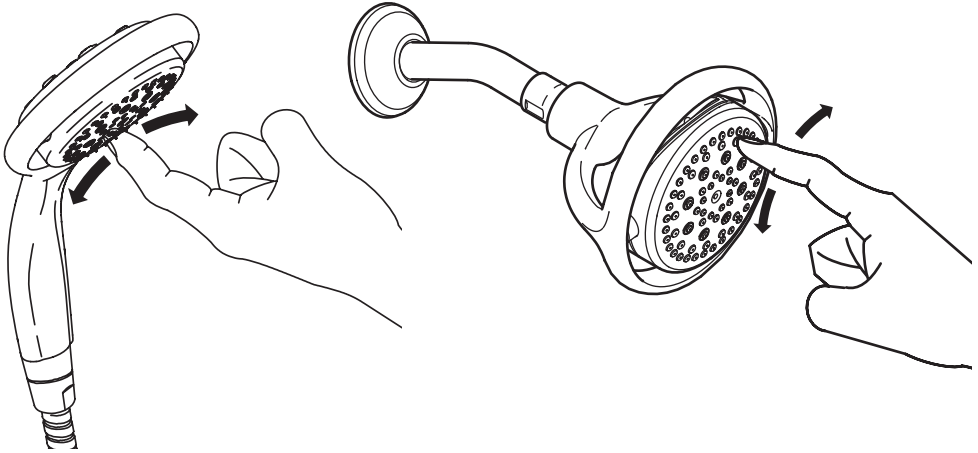
Use a soft, dampened sponge or cloth. Never use an abrasive material such as a brush or scouring pad to clean surfaces.

The ideal cleaning technique is to rinse thoroughly and blot dry any water from the surface after each use.

USER MAINTENANCE

Clean the Spray Holes

Handshower may differ slightly from the one shown, but the installation method is the same.

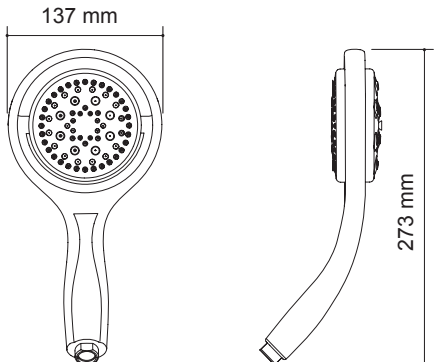


To dislodge debris and mineral build-up:

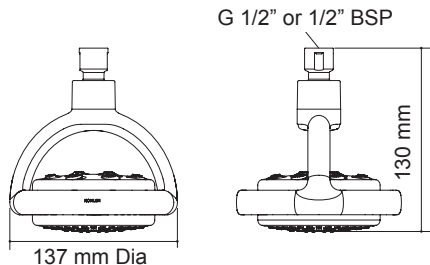
1. Run water through the handshower or showerhead.
2. Firmly rub your finger back and forth across the rubber spray nozzles on the handshower face.
3. If this procedure fails to improve the performance of the handshower or showerhead, then refer to 'Clean the Screen Washer', section of this guide.

DIMENSIONS

17493W-CP



15996W-CP



CUSTOMER CARE

Guarantee of Quality

Kohler UK guarantee products against any defect of materials or workmanship for the following periods

25 Years

Ceramic Ware and Cast Products

10 Years

Stainless Steel Products and, Acrylic Baths

5 Years

Shower Valves, Taps, Cistern
Fittings, Toilet Seats and Bath
Panels

2 Years

Bathroom Furniture and
Accessories

1 Year

Whirlpool / Spa Baths

Our confidence in the quality and reliability of our superior products enables us to offer a comprehensive guarantee for all products.

To register and fully benefit from this guarantee you must return the enclosed product registration card indicating the Kohler items you have purchased.

Within the guarantee period we will undertake to resolve any material defects, by providing replacement parts, modules or complete product, as we deem appropriate. To be free of charge, work must only be undertaken by Kohler UK approved personnel.

To ensure that any problems can be promptly resolved you must contact Kohler UK directly.

Proof of purchase must be provided with any claims.

This guarantee covers products in domestic use, installed and maintained in accordance with the instructions. It covers the purchaser only and is not transferable.

Commercial / Business Use

Any Kohler Bathroom product used within a commercial / business premise is guaranteed for **1 Year** against any defect of materials or workmanship.

Not Covered by this Guarantee

Damage or defects arising from incorrect installation, improper use or lack of maintenance.

Installed product damaged in transit Consequential loss, damage or product removal and installation costs.

General wear and tear.

This guarantee is in addition to your statutory and other legal rights.

To Contact Us

Kohler UK Customer Services

Tel: 0844 571 0048

Fax: 0844 571 1001

Email: info@kohleruk.com

Website: www.kohler.co.uk

Kohler Mira Ltd
Cromwell Road,
Cheltenham GL52 5EP.

The company reserves the right to alter
product specifications without notice.

KOHLER