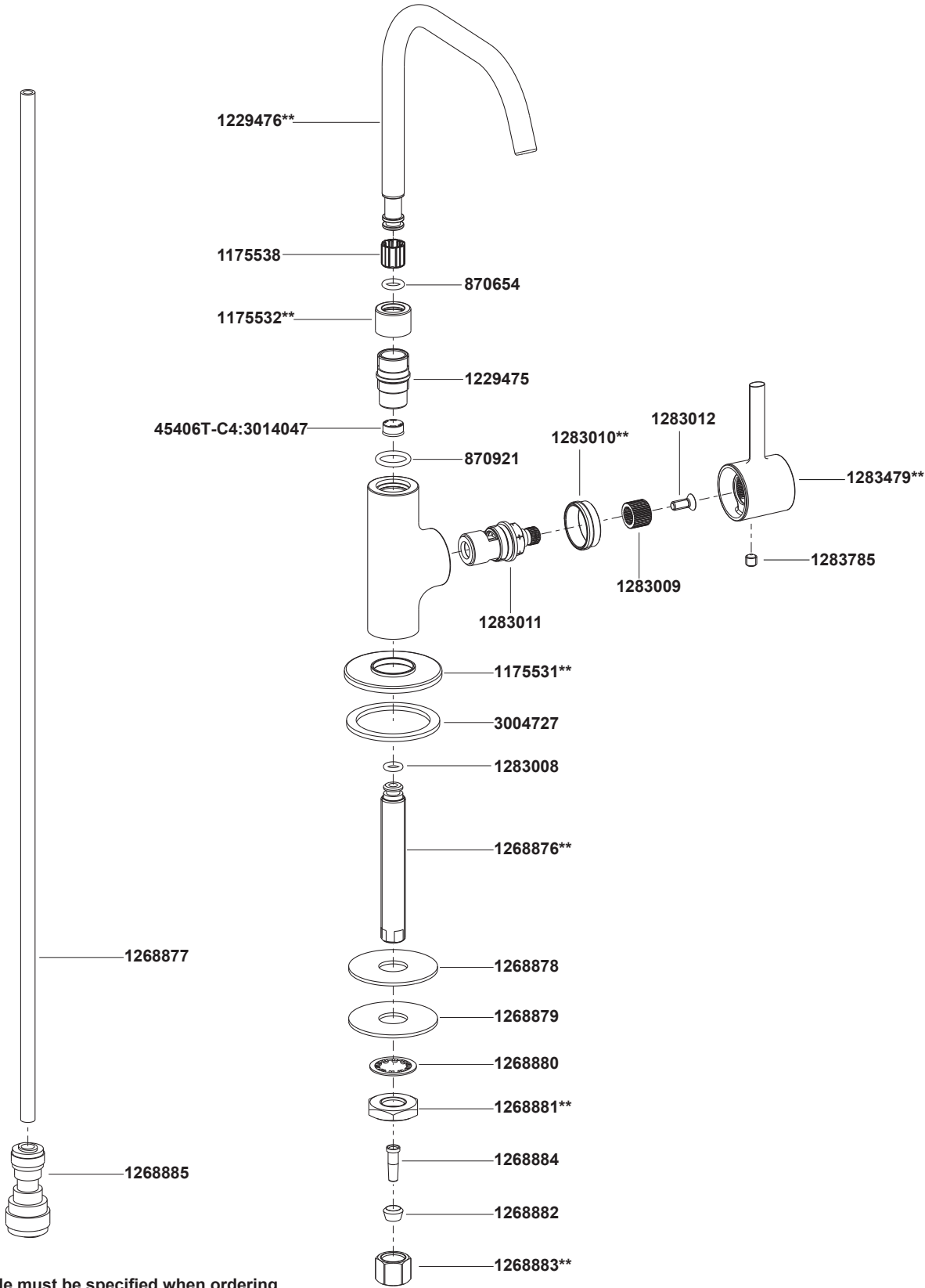


45406T-C4 Kitchen Faucet (Adaptive To Filter)  
45406T-L Kitchen Faucet (For High Flow RO)



\*\*Color code must be specified when ordering

45406T-C4 Kitchen Faucet (Adaptive To Filter)  
45406T-L Kitchen Faucet (For High Flow RO)

BEFORE YOU BEGIN

All information is based on the latest product information available at the time of publication. Kohler Co. reserves the right to make changes in product characteristics, packaging, or availability at any time without notice.

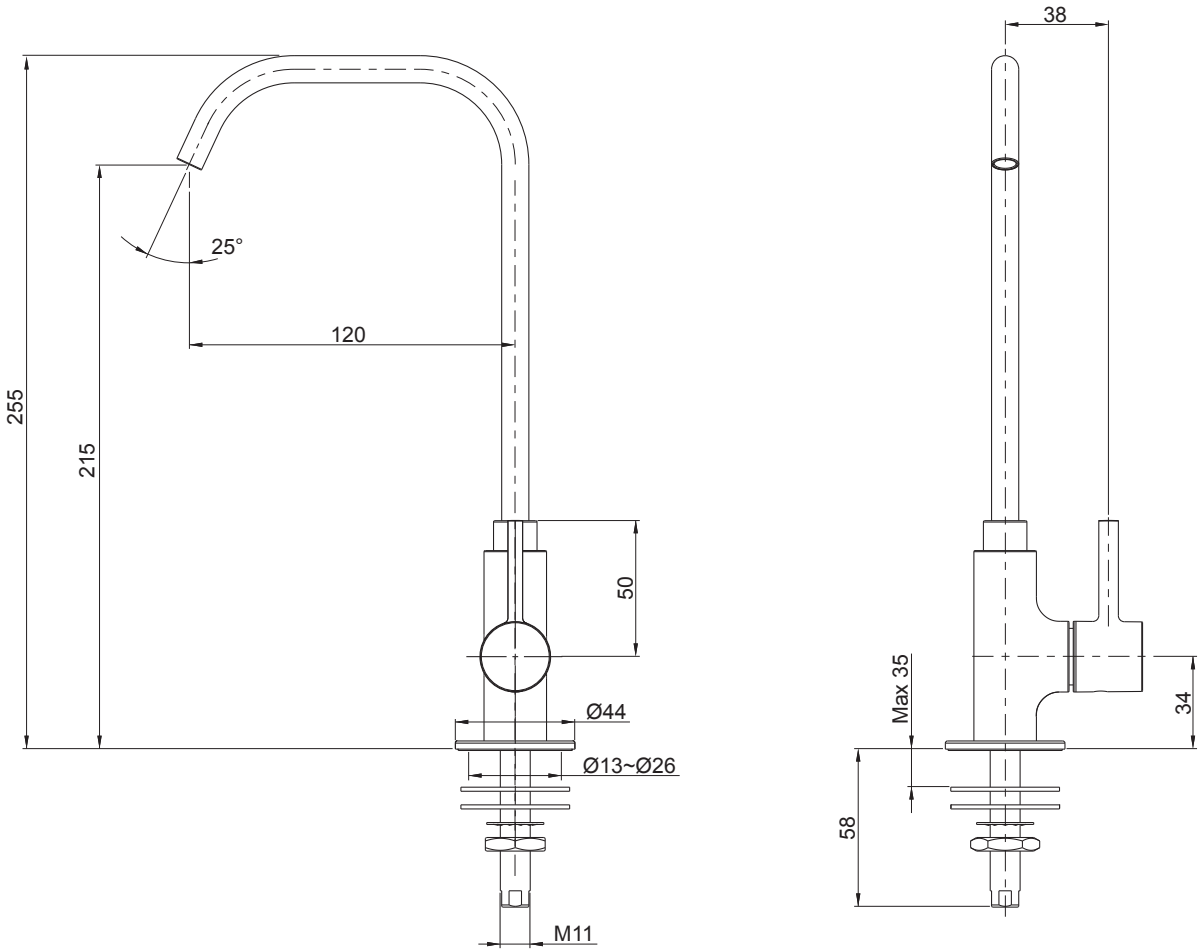
Please leave these instructions for the consumer. They contain important information.

- NOTES:**
1. Flush the water supply pipes thoroughly to remove debris.
  2. If possible, install this faucet before installing sink.

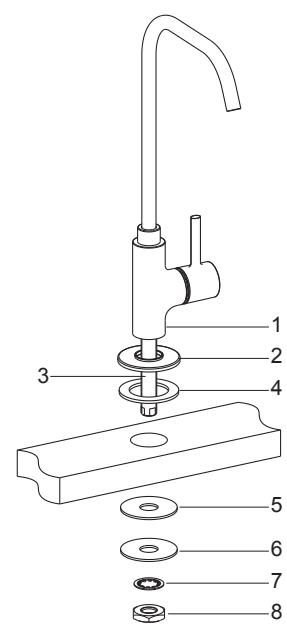
HANDLE OPERATION

Turn counter-clockwise for opening faucet.

ROUGH-IN DIMENSIONS



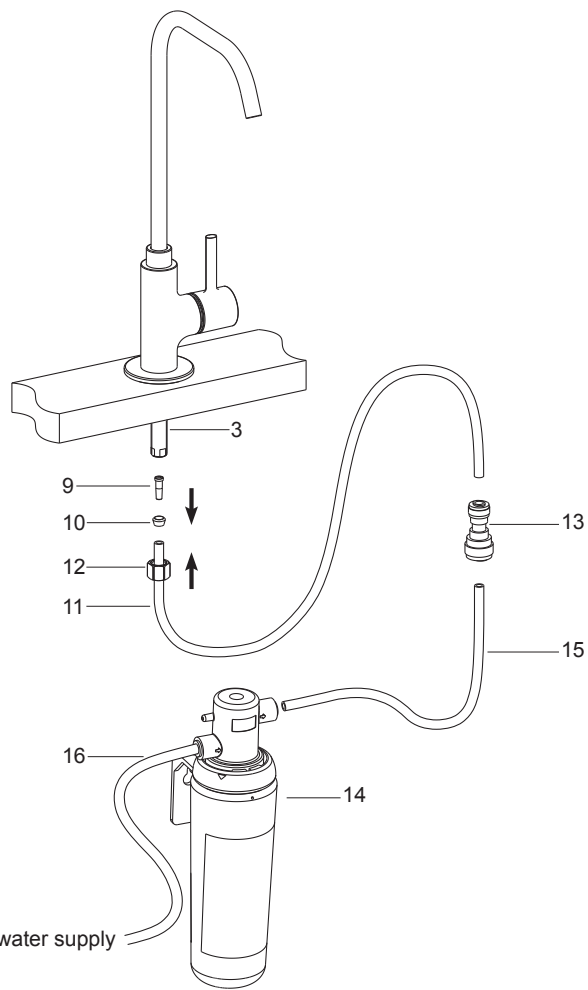
**INSTALLATION**



**How to Install the Faucet**

Install the base(2) onto the bottom of the faucet body(1) through the mounting stud(3). Put the washer(4) into the groove on the bottom of the base. Insert the faucet into the sink.

From underside of the sink, place the rubber washer(5), stainless steel washer(6), saw-toothed washer(7) and nut(8) onto the mounting stud. Position the faucet so that the handle is on the right side. Tighten the nut to secure the faucet to the sink.



**How to Connect the Filter**

**For 3/8" Hose**

Insert the pin(9) into the hose(11) through the ferrule(10). Tighten the nut(12) onto the mounting stud through the hose, ensure the pin and ferrule are in the nut. The other end of the hose connect to adapter(13).

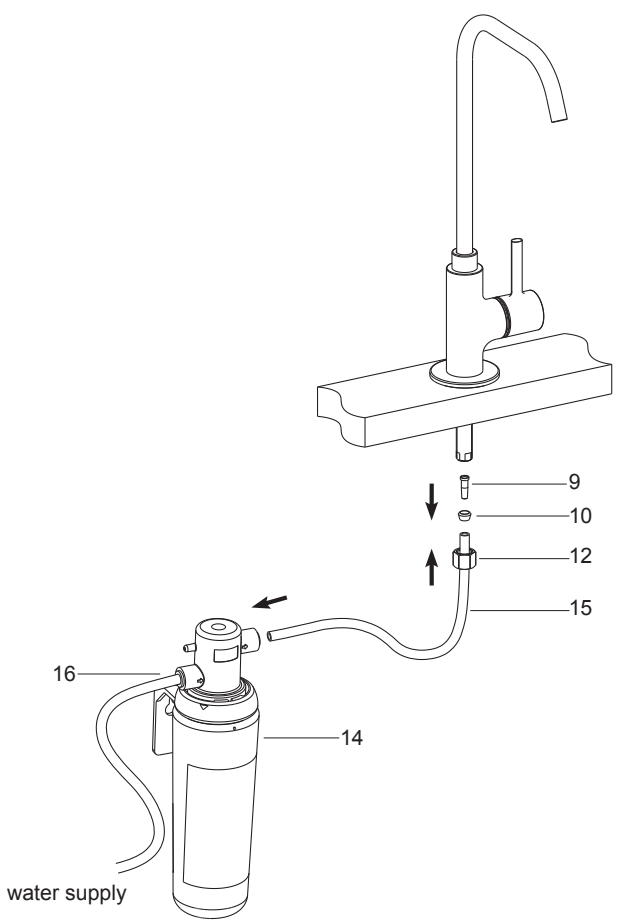
Connect the 3/8" outlet hose(15) of the filter(14, not provided) to the adapter(13) of the faucet. Connect the inlet hose(16) of the filter to the water supply.

**For 1/4" Hose**

Remove the 1/4" outlet hose(15) of the filter(14, not provided). Insert the pin(9) into the outlet hose(15) through the ferrule(10).

Tighten the nut(12) onto the mounting stud through the hose, ensure the pin and ferrule are in the nut. The other end of the hose is connected to the filter.

Connect the inlet hose(16) of the filter to the water supply.



**INSTALLATION CHECKOUT**

- Ensure that all connections are tightened and the handle is in the off position.
- Open the drain. Turn on main water supply and check for leaks. Repair as required.
- Turn the faucet handle on. Run water through the spout about one minute to remove any debris. Shut off the faucet.

**CLEANING INSTRUCTIONS**

All Finishes: Clean the finish with mild soap and warm water. Wipe entire surface completely dry with clean soft cloth. Many cleaners may contain chemicals, such as ammonia, chlorine, toilet cleaner etc, which could adversely affect the finish and are not recommended for cleaning.

Do not use abrasive cleaners or solvents on Kohler faucets and fittings.

"LEAD FREE" is marked on the back of the faucet signifying its compliance with the United States AB1953