



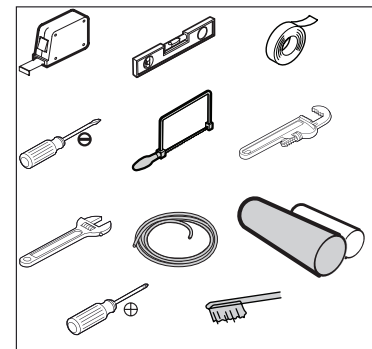
BEFORE YOU BEGIN

- Please read these instructions carefully to familiarize yourself with the required tools, materials, and installation sequences. Follow the sections that pertain to your particular installation. This will help you avoid costly mistakes. In addition to proper installation, read all operating and safety instructions.
- All information in these instructions is based upon the latest product information available at the time of publication. Kohler India reserves the right to make changes in product characteristics, packaging or availability at any time without notice.
- These instructions contain important care, cleaning, and warranty information - please leave instructions for the consumer.
- In case product is damaged when unpacked for first time, please do not install and report to customer care.

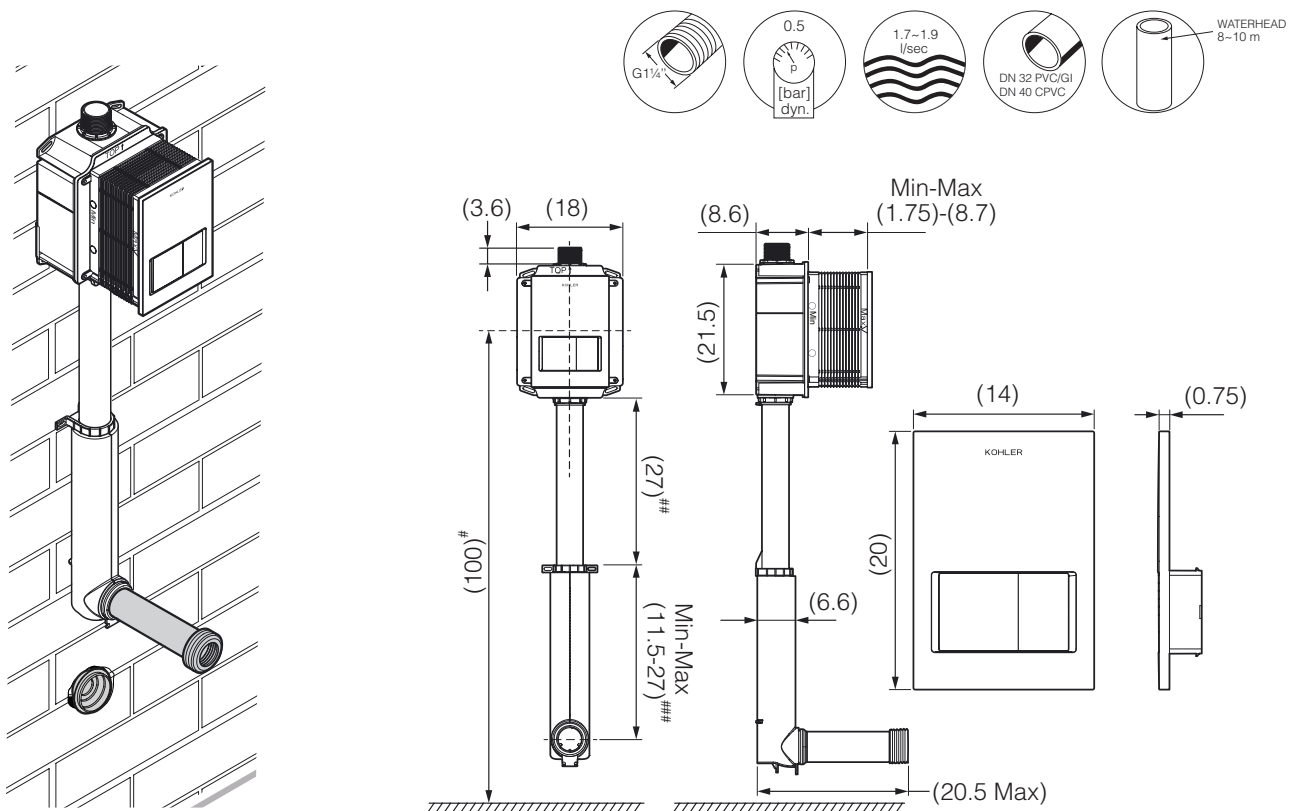
VALVE SPECIFICATION

Model	31538IN-CP
Pressure Requirement	1.0 to 6.0 bar (Static Pressure)
Flushing Mode	Dual Flush
Inlet Size (Thread)	G 1 1/4 inch
Liter per Flushing	3L/6L @ 0.5 bar dynamic pressure
Flow Rate	1.7-1.9 Liters per second at 0.5 bar (Dynamic Pressure)
Water Temperature	4°-45° C
Wall Size	4 inches
Valve Body dimensions	21.5 x 18.0 x 8.6 cm
Recommended Pipe Size (Inlet)	DN32 PVC/GI, DN40 CPVC

TOOLS REQUIRED



ROUGH-IN DIMENSIONS



Install as recommended dimensions so as toilet seat do not touch the faceplate when opened.

Do not cut this pipe as it will lead to sub optimal performance.

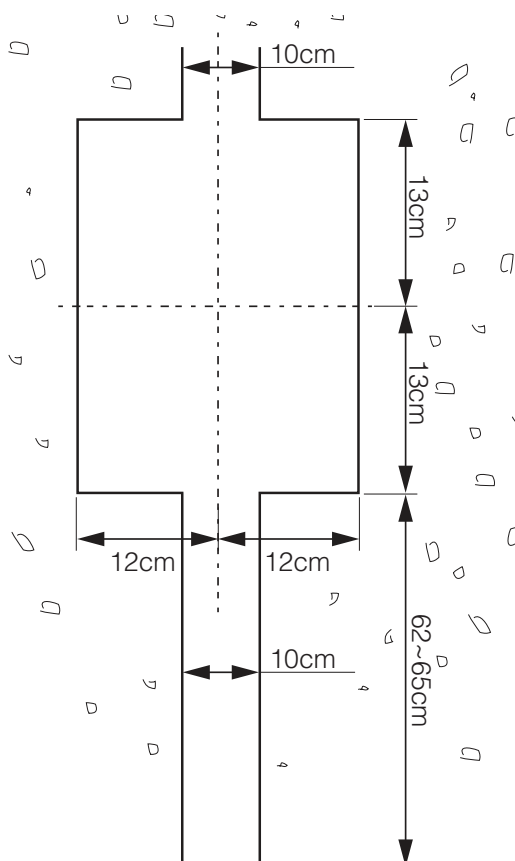
Cut to match toilet rough-in.

*All dimension are in cm.

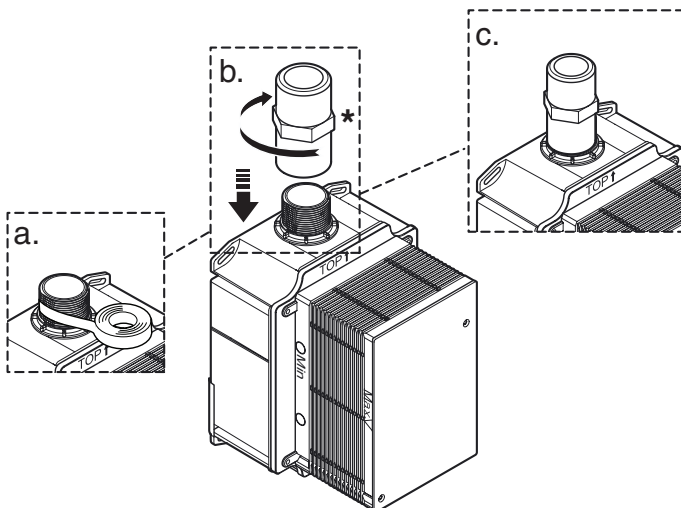
NOTE: This flush valve is designed to operate with 0.5 to 1.5 bar of dynamic water pressure. **THE MINIMUM PRESSURE REQUIRED FOR THE VALVE IS DETERMINED BY THE TYPE OF FIXTURE SELECTED.** Consult fixture manufacturer for minimum pressure requirements.

A. INSTALLATION INSTRUCTIONS

- 1** Before starting, please make sure there is unfinished wall with no tiling. Determine the installation location as per rough-in dimensions. Turn off the main water supply. Chisel out a slot as shown in below picture:



2

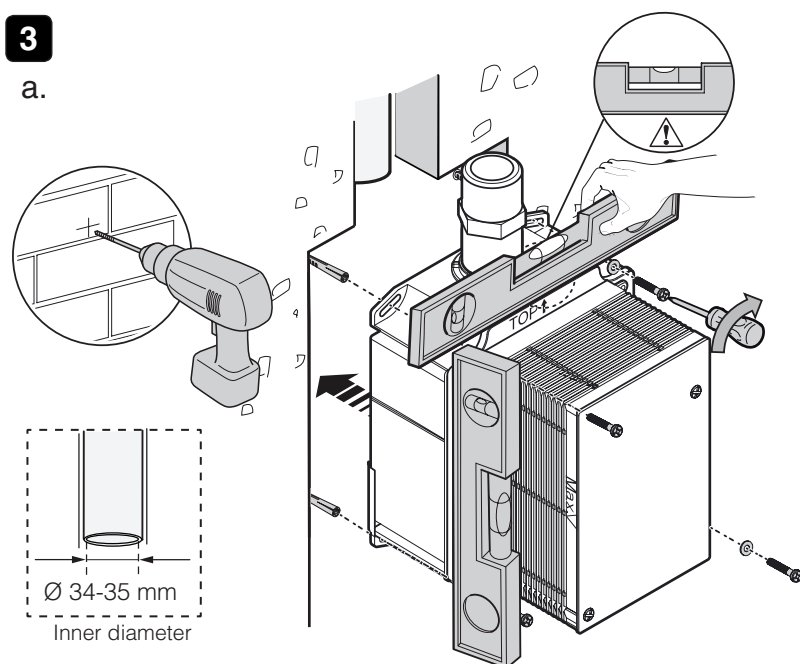


* Not provided with product.

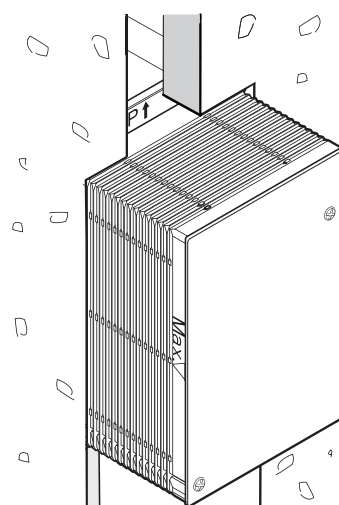


3

a.



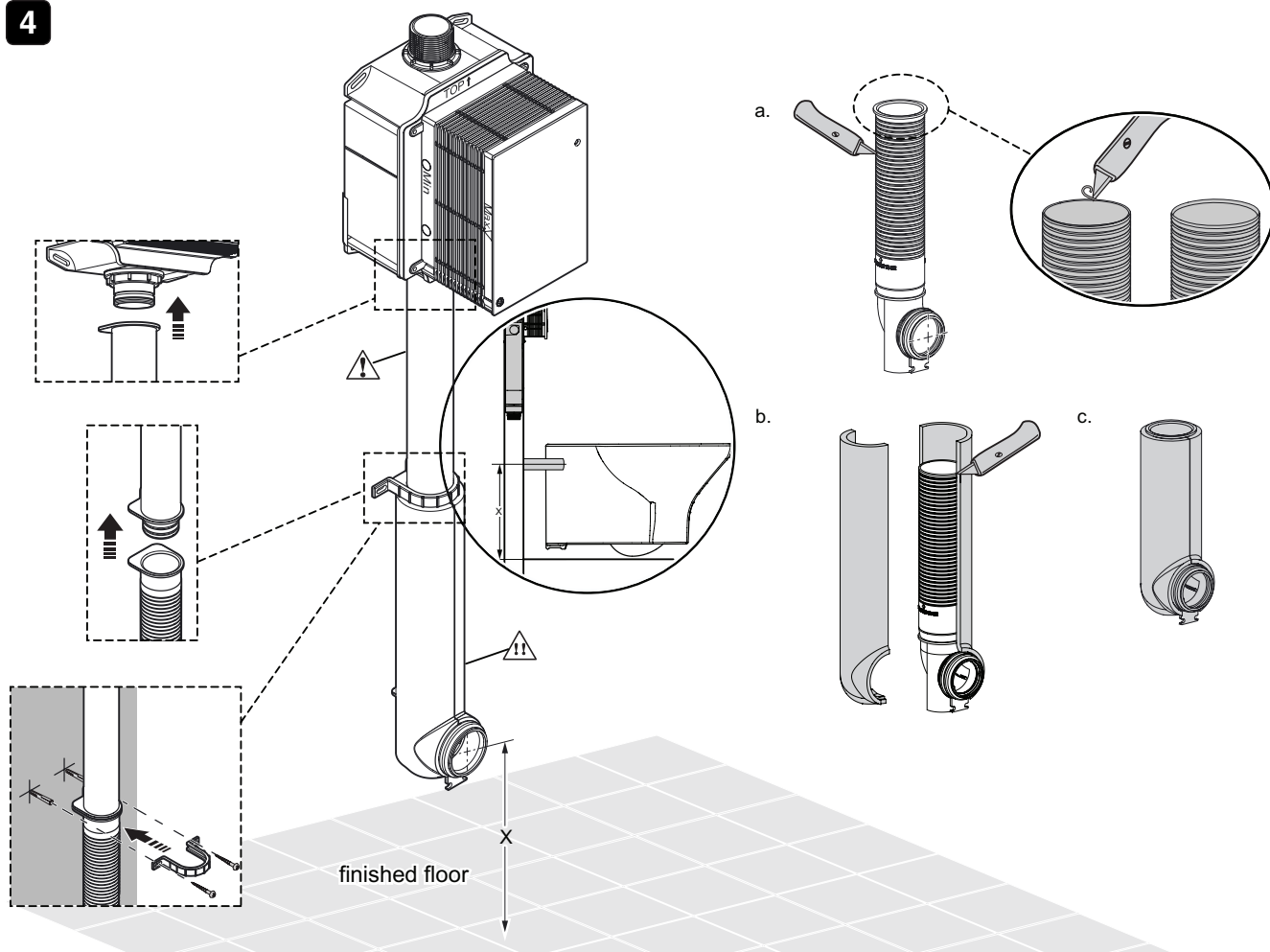
b.



* Use anchors & screws supplied with product.

Note: Internal diameter of water line should not be less than 34-35mm.

4



⚠ Do not cut this pipe.

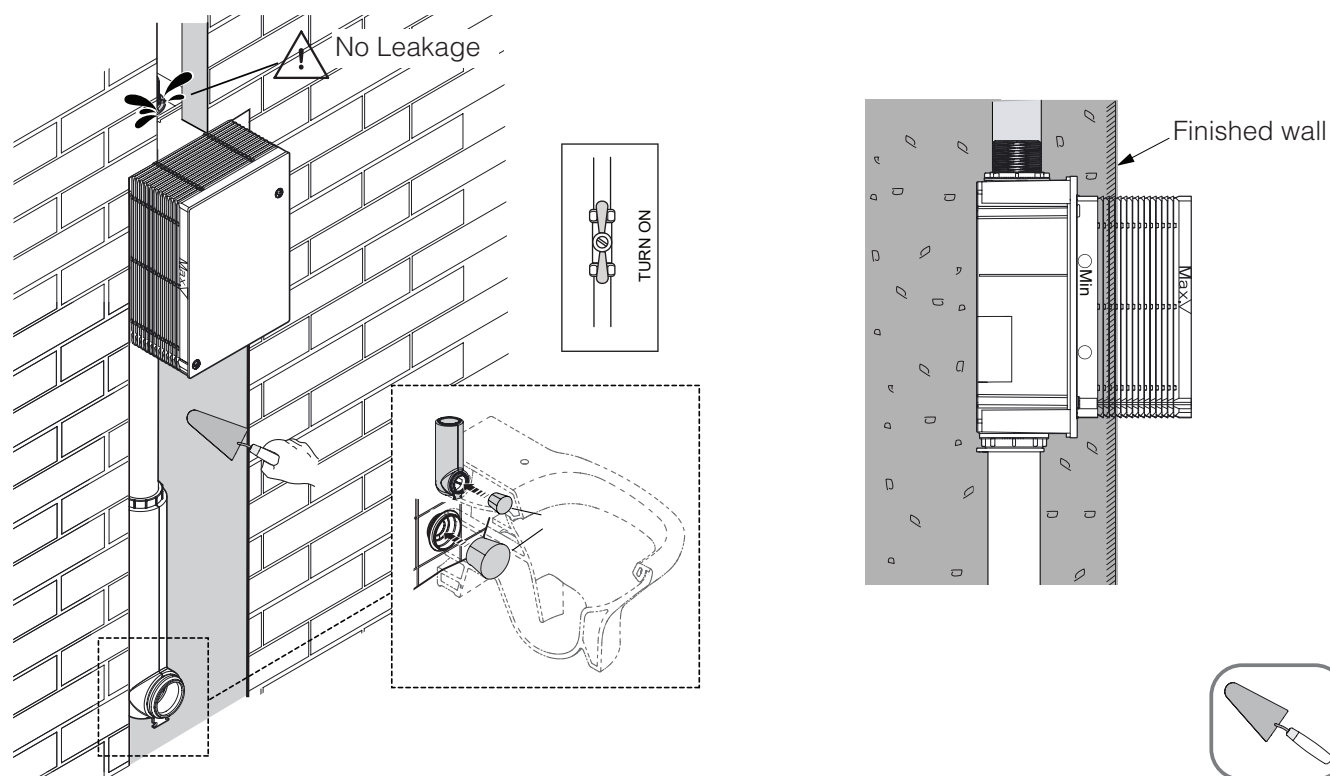
⚠ Install only with EPS protective cover.

* Cut adjustable trap as per rough-in dimensions.

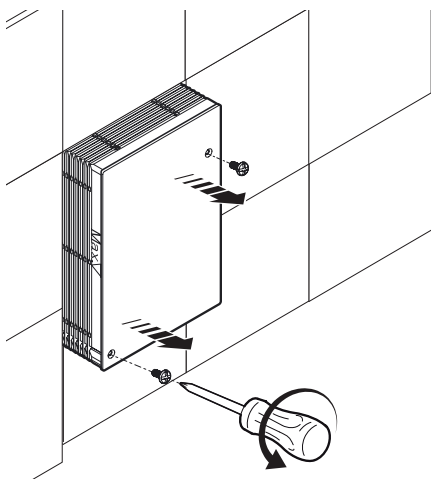
* Use anchors & screws supplied with product.



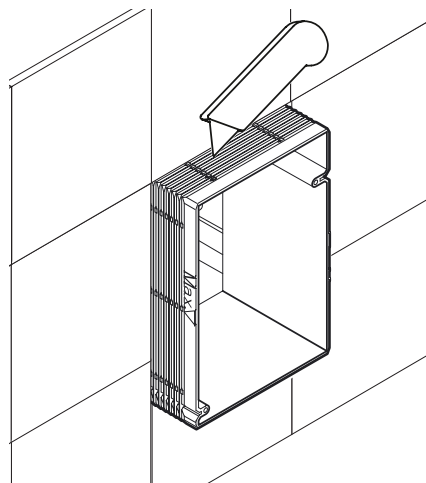
5 Cover the outlet with protective caps. Turn on the valve and check for leakages. Apply slurry into the crevice around the valve box. Lay the tiles.



6 Remove the square mask cover.



7

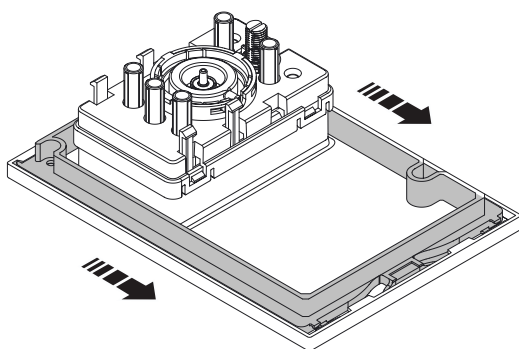


* Once tiling is complete cut the square mask to align with tiles.

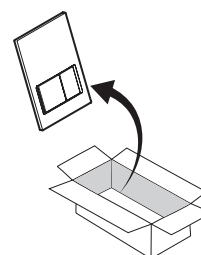
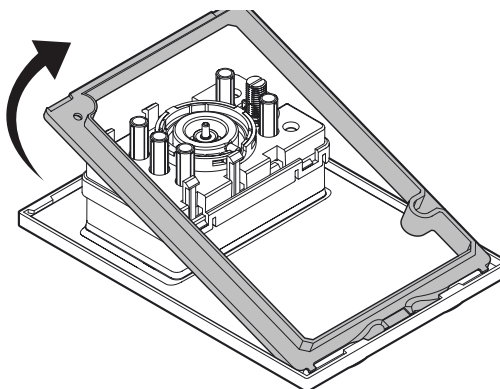


8 Remove the panel from faceplate.

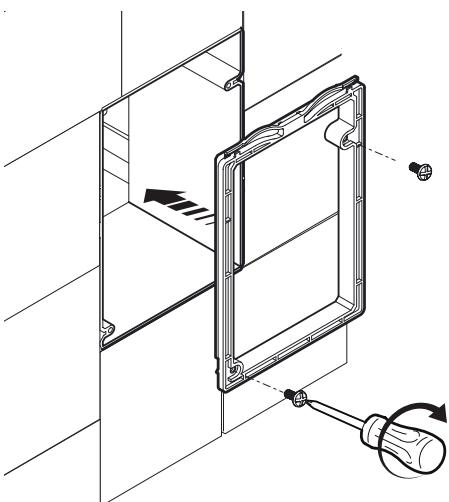
a.



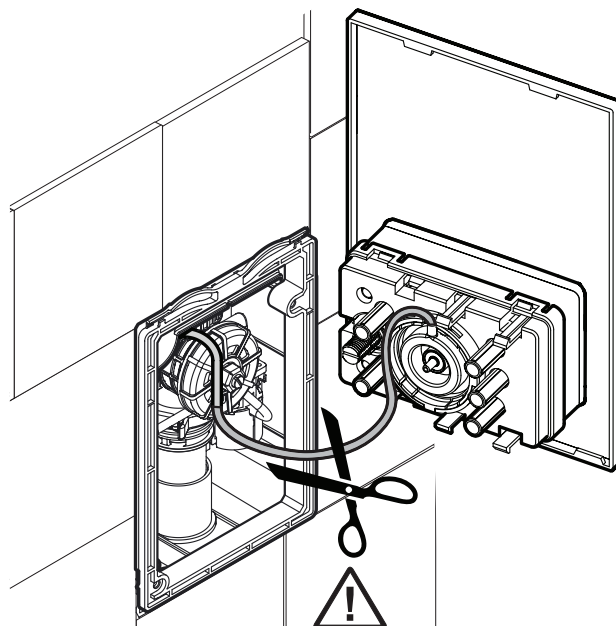
b.



9 Mount the button position panel.

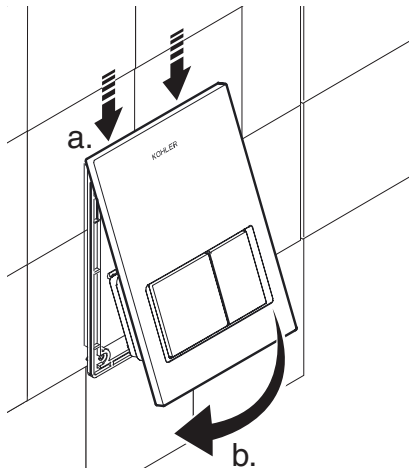


10 Connect the pneumatic pipe.

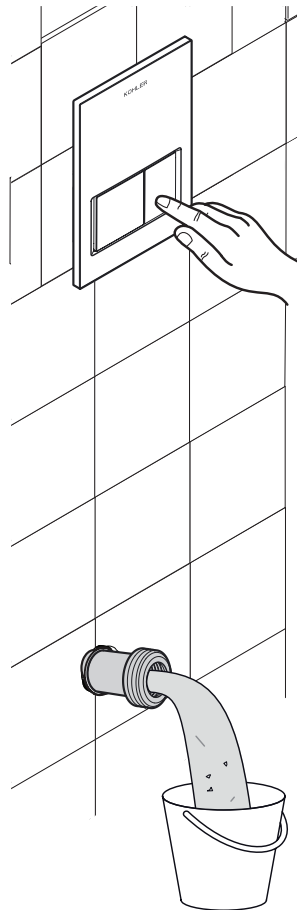


Cut pneumatic pipe as per requirement before connection.

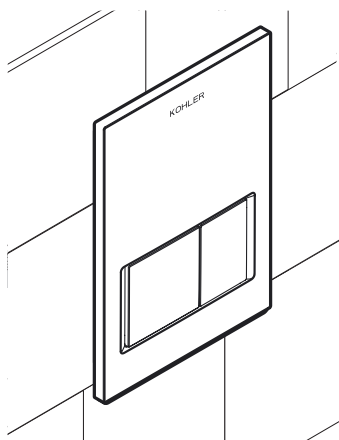
11 Mount faceplate.



12



13

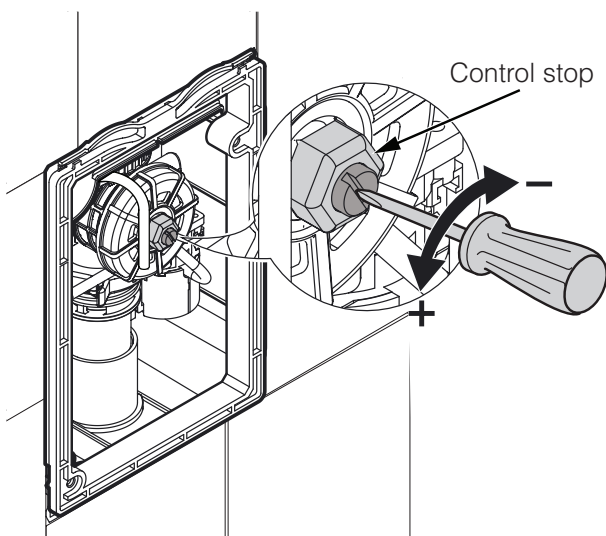


Press the faceplate button and check for proper flushing from flush valve.

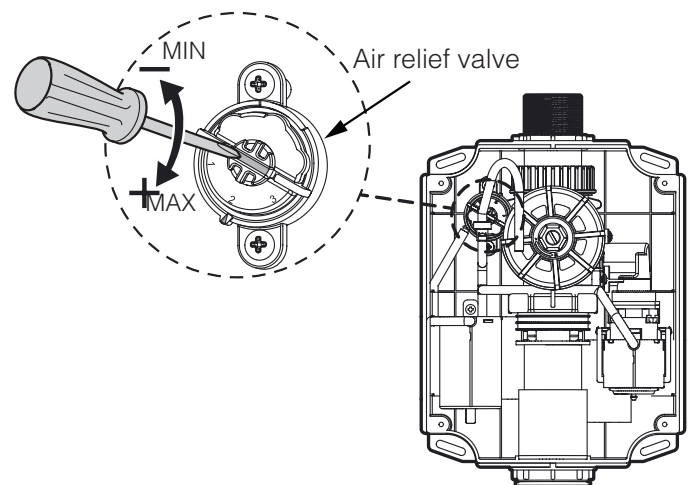
B. ADJUSTMENTS

NOTE: This flush valve is engineered for quiet operation. Excessive water flow could be noisy and could result in water splashing out from the bowl, whereas too little water flow may not satisfy the needs of the fixture. Proper adjustment is achieved when the bowl is cleansed after each flush without water splashing out from the bowl and a quiet flushing cycle is achieved.

a. FLOW RATE ADJUSTMENT



b. FLUSH VOLUME ADJUSTMENT



* Control stop (Flow rate of flushing can be adjusted by turning this control stop clockwise or anticlockwise).

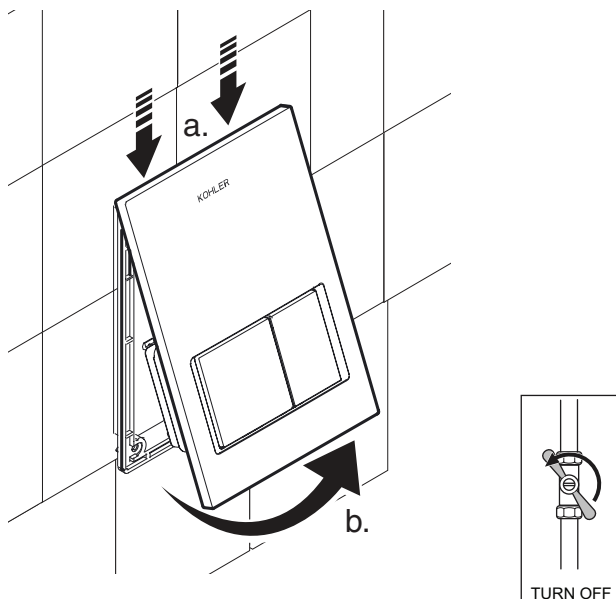
* To increase or decrease the flush volume rotate the air relief valve.



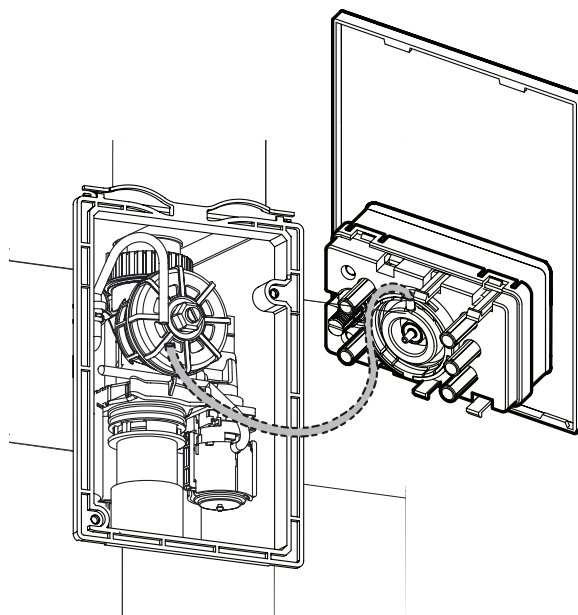
C. CARE AND MAINTENANCE

Before starting maintenance flush out the water from the water supply pipe line and turn - off the main water supply.

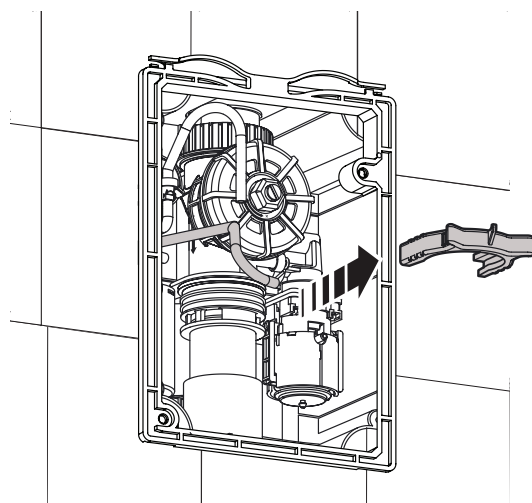
- 1** Remove faceplate.



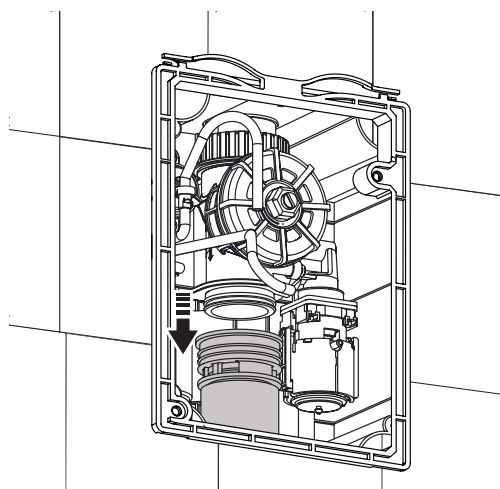
- 2** Remove pneumatic pipe.



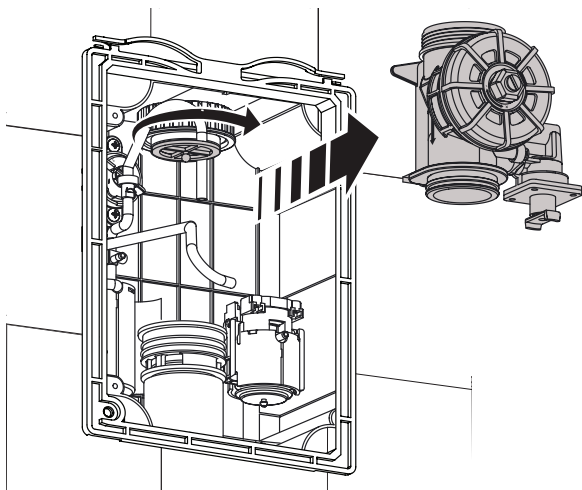
- 3** Remove pipe & then remove clip.



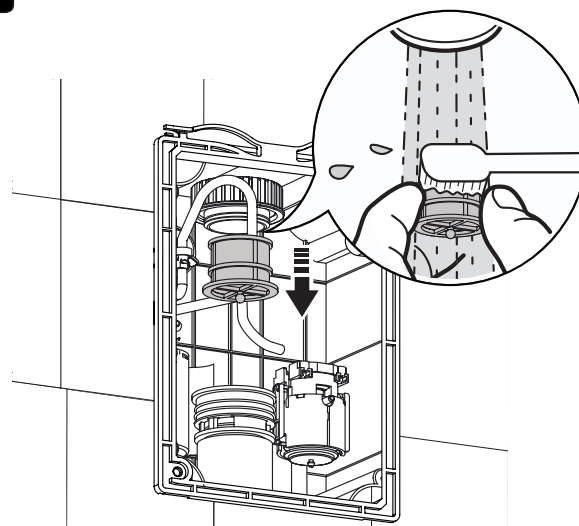
- 4** Push the Anti-siphon pipe downward.



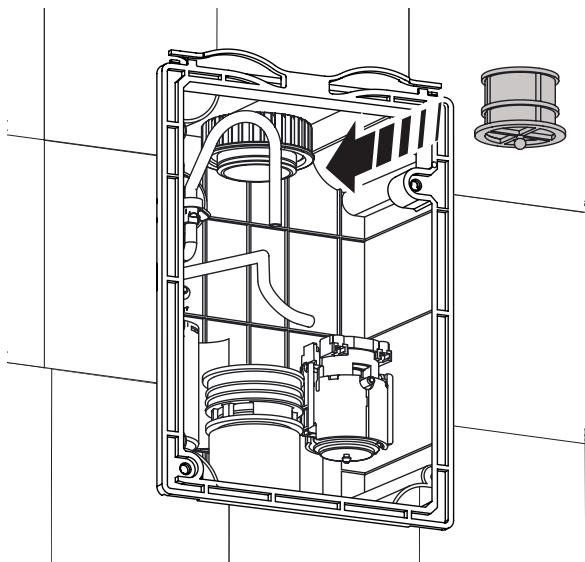
- 5** Rotate disc, slide down the water circulation assembly and take it out.



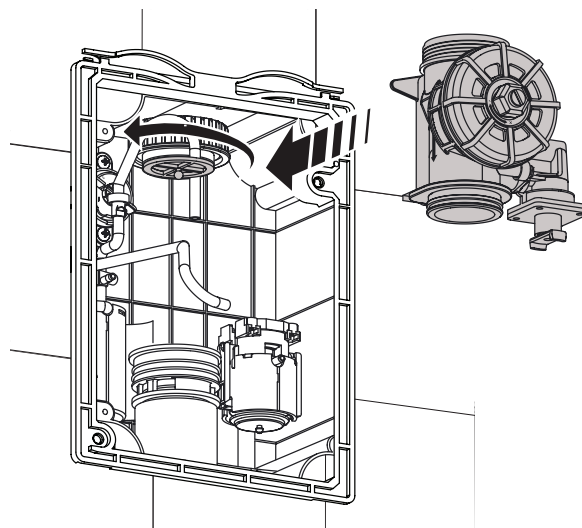
- 6** Remove and clean the filter.



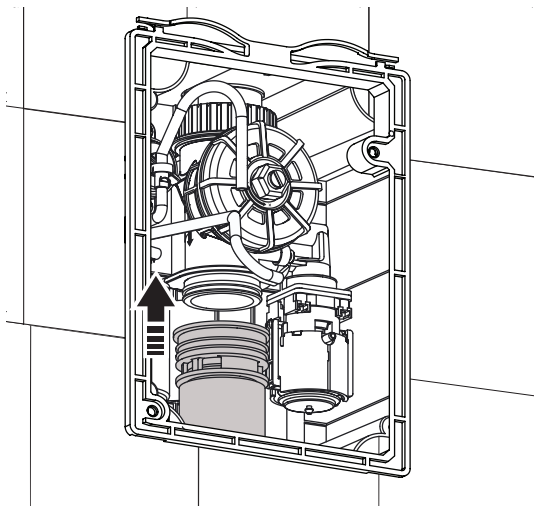
7 Re-install the filter after cleaning.



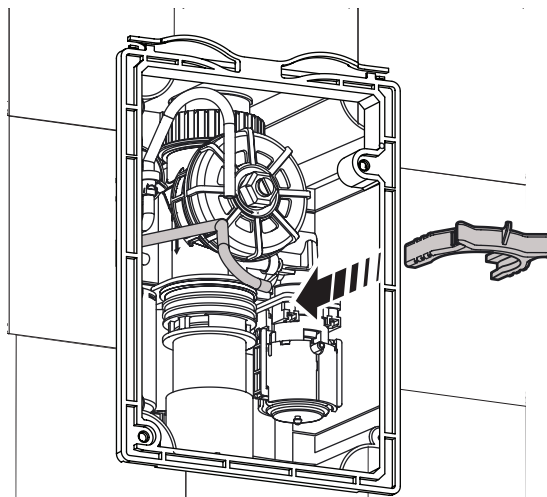
8 Re-install the water circulation assembly.



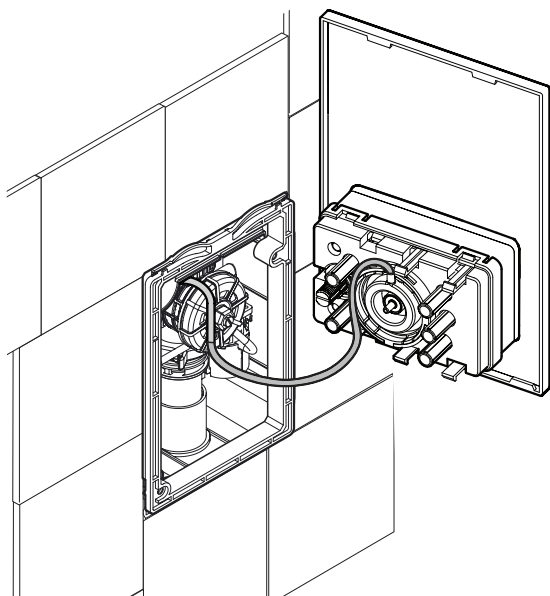
9 Push the Anti-siphon pipe upward.



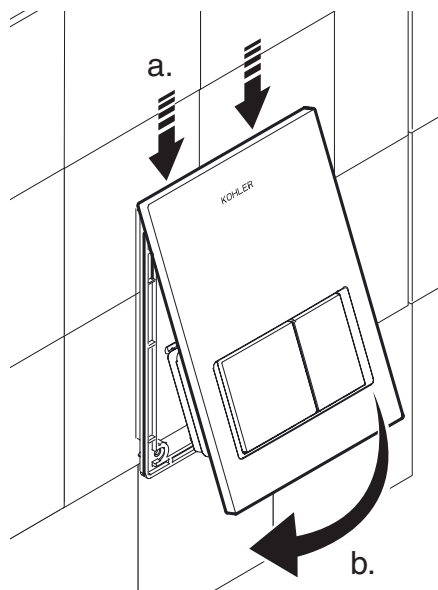
10 Attach pipe & then install clip.



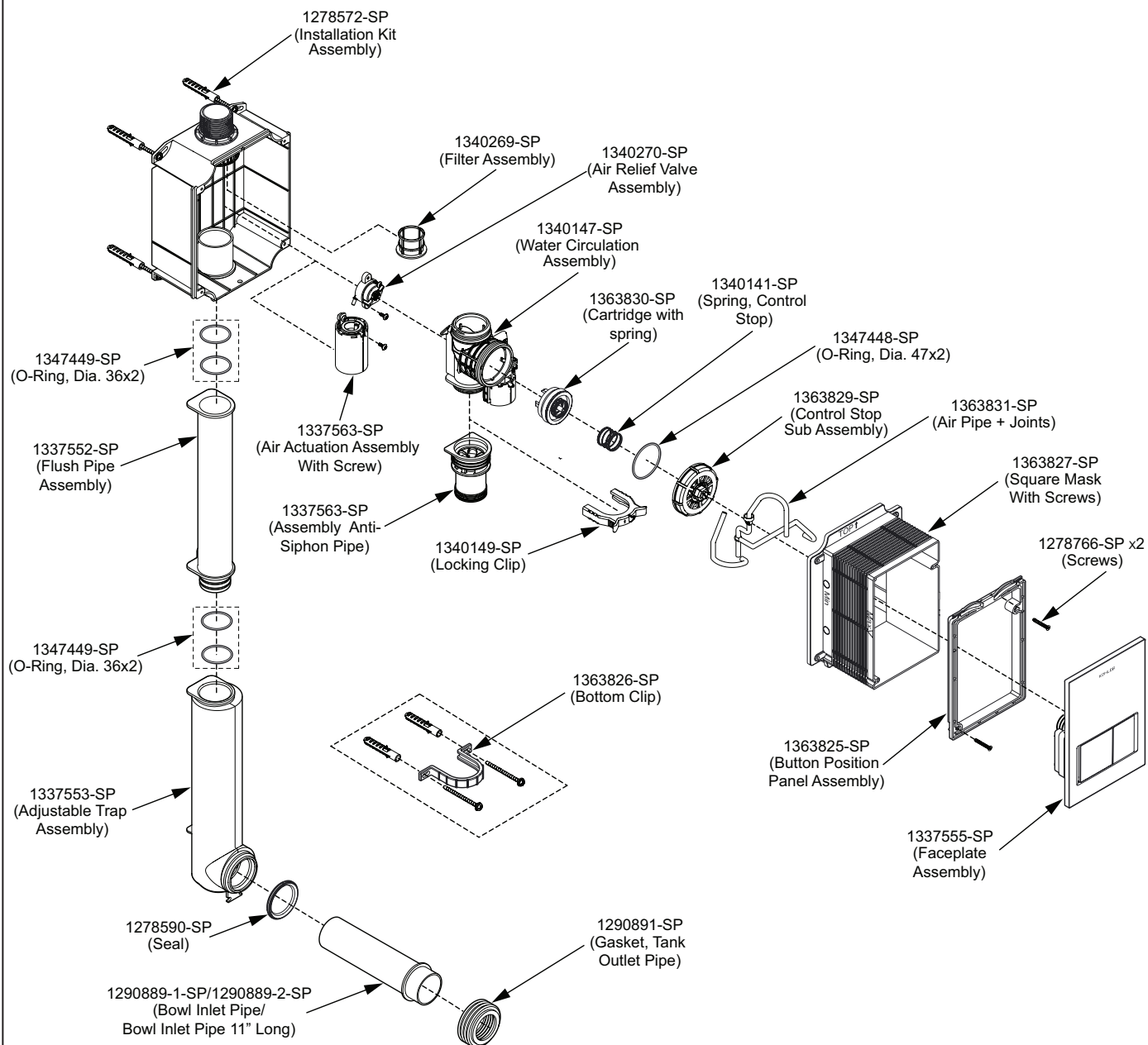
11 Connect the pneumatic pipe.



12 Mount faceplate.



SERVICE PARTS



IMPORTANT CONSUMER INFORMATION

1. Do not use harsh chemicals to clean the product.
2. Use KOHLER cleaners 1339378 (500ml) or 1352424 (200ml) to clean chrome plated products.
3. Do not try to open the product as it will void the warranty. In case of any issue close the water supply valve and call customer care.