



## INSTALLATION INSTRUCTIONS

## SUMMON SENSOR FP DC, MANUAL OVERRIDE 24146IN-7

### BEFORE YOU BEGIN

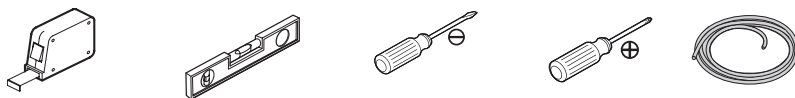
- Please read these instructions carefully to familiarize yourself with the required tools, materials, and installation sequences. Follow the sections that pertain to your particular installation. This will help you avoid costly mistakes. In addition to proper installation, read all operating and safety instructions.
- All information in these instructions is based upon the latest product information available at the time of publication. Kohler India reserves the right to make changes in product characteristics, packaging or availability at any time without notice.
- These instructions contain important care, cleaning, and warranty information - **please leave instructions for the consumer.**
- In case product is damaged when unpacked for first time, please do not install and report to customer care.
- Do not apply spares that are not provided by Kohler, and please note that glass adhesive tape shall not be applied to the installation of Kohler spares. Kohler will not be responsible for any damage related to installation with spares not provided by Kohler.
- Faceplate is compatible only with pneumatic Instaflush tanks purchased after June 2019, incase of older tank, order part - 1278771

### FACEPLATE SPECIFICATION

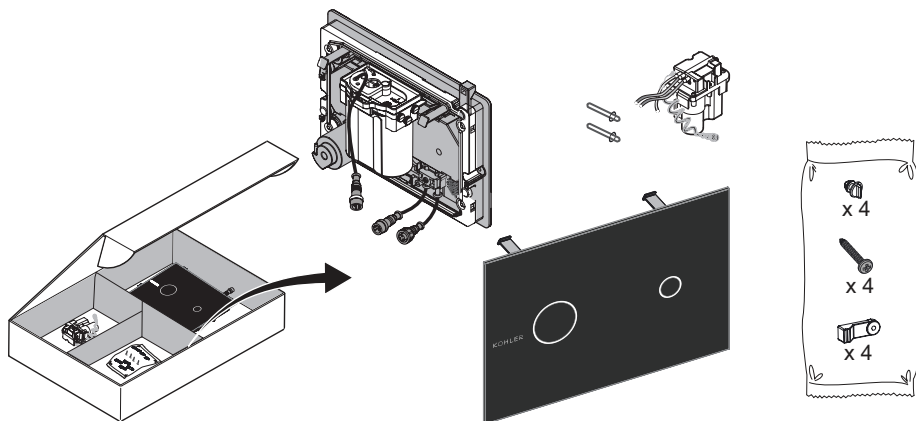
Model	24146IN-7
Power	2 'D' size Alkaline Batteries (3V DC)(not provided)
	Consumption: < 21mAh/full flush cycle
	Life: Minimum 10000 cycles*
User Sensing Distance	Default: 70cm
	Adjustable: 70cm-100cm
Flushing Actuation Sensing Distance	0.5-10.2cm
Flushing Actuation Confirmation Time	0.5s
Refilling Duration Indicator	Full Flush: Adjustable(25s-300s)
	Half Flush: 60% of Full Flush Time
Night Light	Default: Off
Hygiene Flush	Default: Off
Manual Flush Button	Yes (Behind Glass Panel)

\* T&C depending on usage

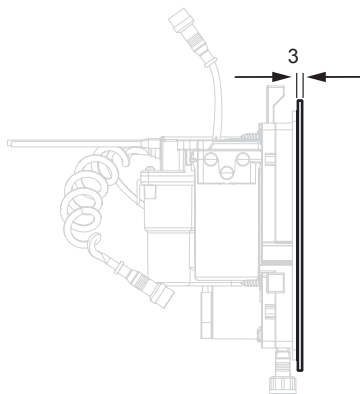
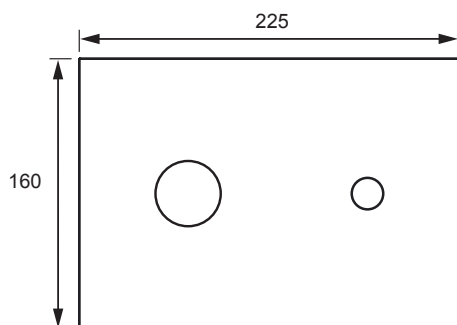
## TOOLS REQUIRED



## PACKAGE CONTENT



## ROUGH-IN DIMENSIONS



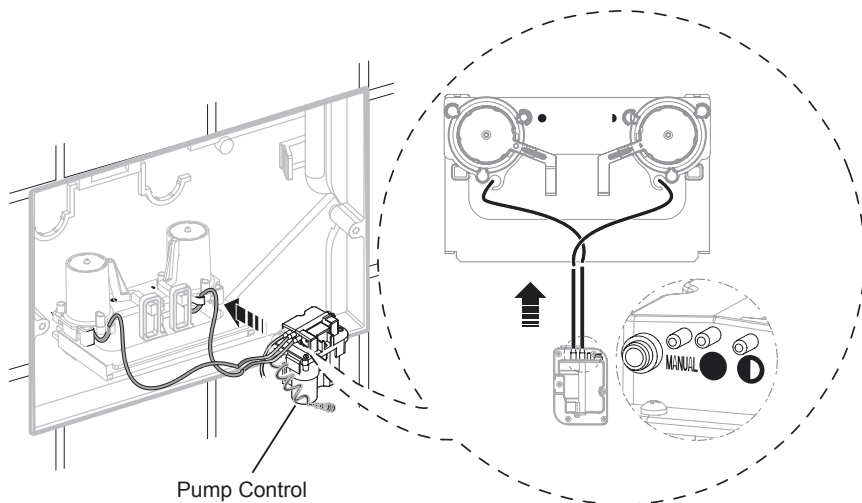
### NOTE:

All dimensions are in mm(only for reference). Refer In-wall tank installation manual for tank dimensions.

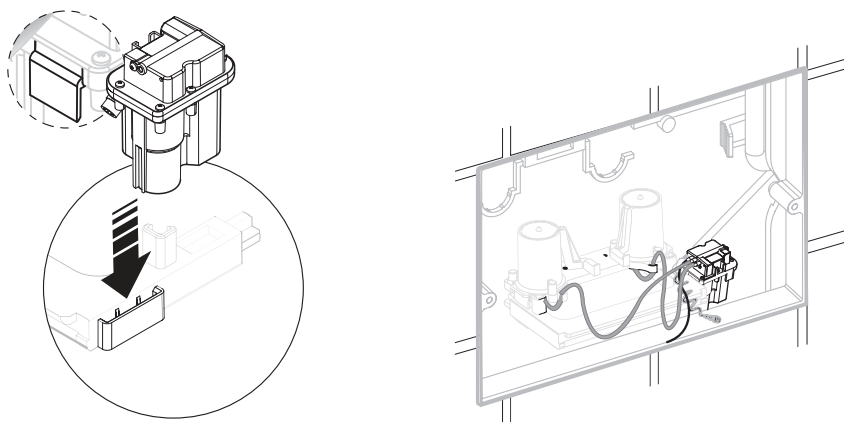
## INSTALLATION INSTRUCTION

### 1 Pump control module assembly installation

- a. Connect hose of full flush and half flush from Pump Control Module Assembly with air actuation assembly of the In-wall tank. Make sure to connect each flush with their respective air pipes.

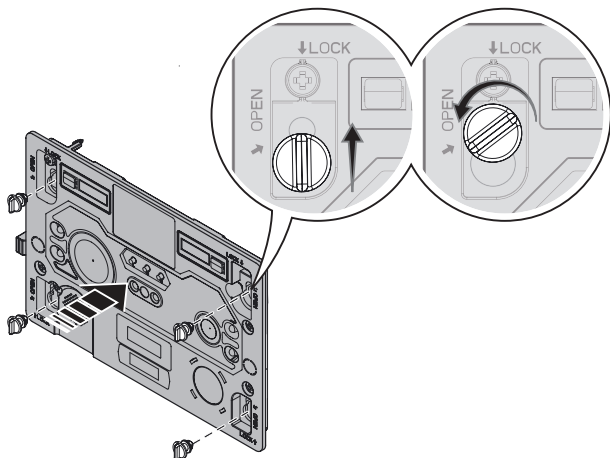


- b. Hang air pump onto supporting bracket after connecting the hose

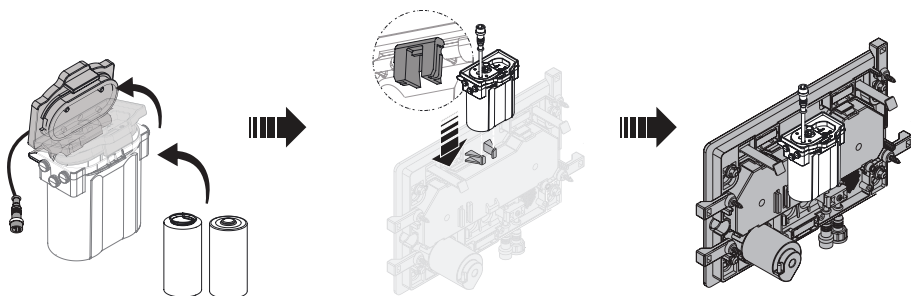


**2****Faceplate body installation**

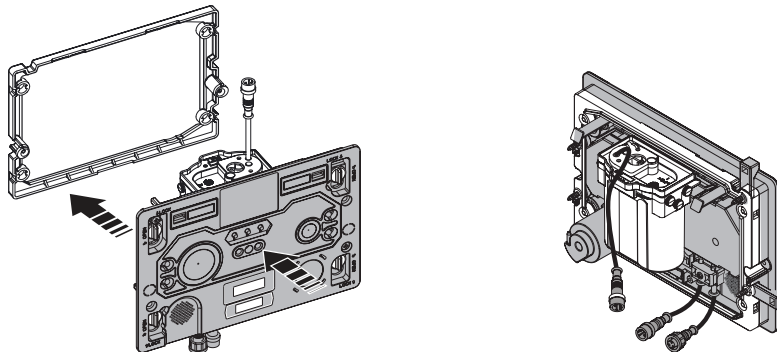
- a.** Install four locknuts & tighten on faceplate body, adjust to “OPEN” mark as shown



- b.** Insert 2 D size batteries into the battery box, close the lid and hang box onto rear of faceplate body

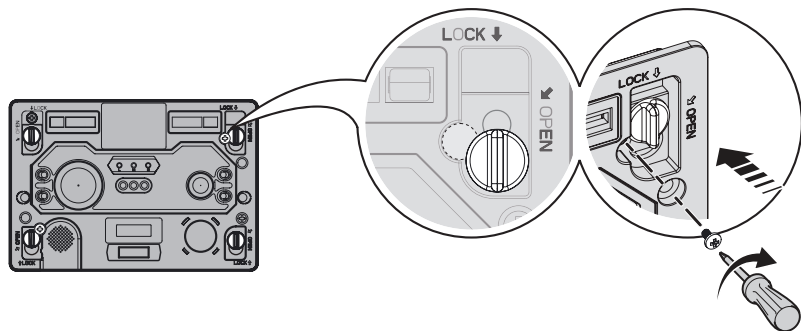


- c.** Hold back plate to faceplate body



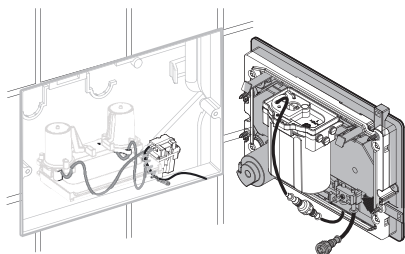


- d.** After attaching back plate adjust locknuts to “LOCK” as shown and tighten anti-theft screws to secure faceplate onto plate.

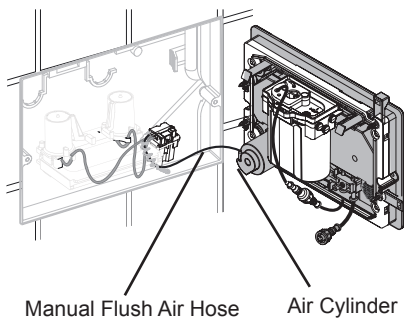


### **3** Faceplate installation

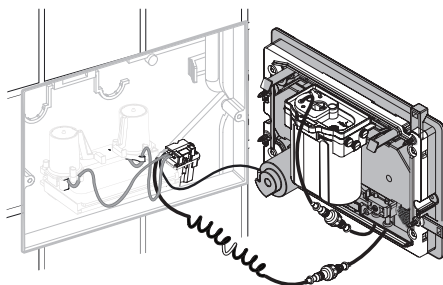
- a.** Connect battery wire to outlet wire in faceplate body



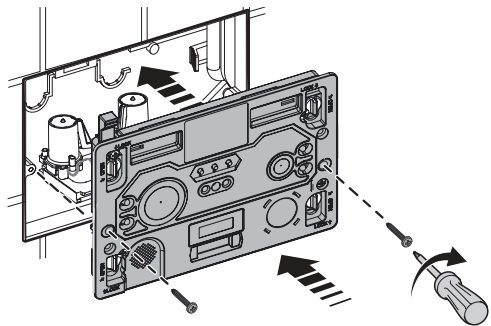
- b.** Connect manual flush air pipe to outlet slot in air cylinder



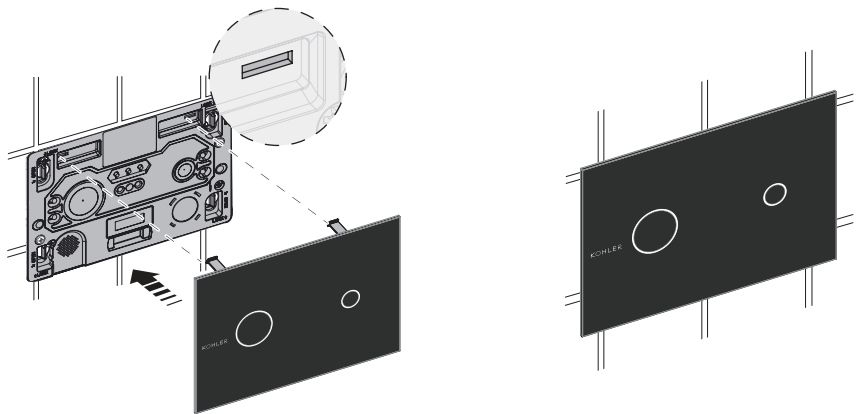
- c.** Connect power output wire of pump and power input wire of faceplate body together, and tighten wires together.



**d.** Tighten faceplate assembly onto square mask as shown.



**e.** Assemble glass cover on faceplate assembly. Insert fixed tapes into the faceplate slots



**ADJUSTMENTS**

Setting	Purpose	How To Adjust
Cleaning Mode	When cleaning of faceplate is needed	Press the L button for <1s, the cleaning mode is activated and lasts for 3 minutes. LED lights turn off and product does not function. Cleaning mode can be stopped midway by pressing the L button again for <1s.

Flushing Actuation Sensing Distance	To change the flushing sensing distance	<p>Press the R button for &lt;1s, the 2 LEDs flash quickly for 10s, put the rear glass back in this duration. The left LED will flash slowly, place hand at desired distance in front of left LED. The left LED flashes quickly for 1s, the setting is then completed. To follow, the right LED starts to flash and similarly the half flush sensing distance can be adjusted.</p> <p>To cancel in middle of the setting, press the R button.</p>
Refilling Duration Adjustment	To adjust the filling duration indication for half and full flush	<p>Press the M button for more than 3s, one full flush is executed and the right LED start flashing along with start of timer for the full flush filling. At desired point, press M button for &lt;1s. The right LED stops flashing and turns on for 2s. The duration for full flush filling indicator has now been set. Half flush duration is automatically adjusted to 60% of full flush duration.</p>
Night Light**	To activate/de-activate night light feature	<p>If night light needs to be switched on, press L button for &gt;3s, both LED lights turn on with dimmed brightness. The lights stay on for next 7 hours. If night light needs to be switched off within 7 hours, press L button for &gt;3s.</p>
Hygiene Flush	To activate/de-activate hygiene flush feature (One flush every 4 hours)	<p>To turn hygiene flush on, press R button for &gt;3s. The left LED will flash 5 times. To turn off, press R button for &gt;3s, the right LED will flash 3 times.</p>

\*All settings to be done after opening glass panel

\*\*Will reduce battery life considerably

## TROUBLESHOOTING

Symptoms	Probable causes	Corrective action
Right LED flashes in cycle(0.5s ON, 1.5s OFF)	Battery voltage is lower than 2.4V	Replace batteries as soon as possible
Touchless flushing not working	1. Battery might have died 2. Error in detection sensors	Use manual button in emergency
User sensing distance reduced	Dark/non-reflective clothing	Stand closer to faceplate for detection

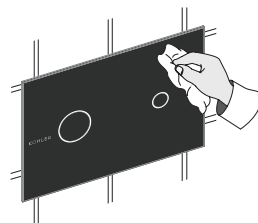
## CARE AND MAINTENANCE

### Cleaning faceplate



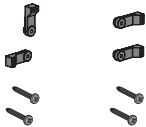
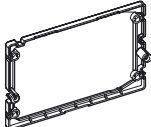

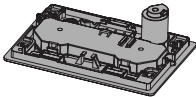
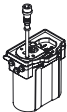

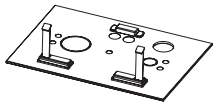
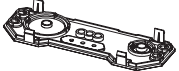
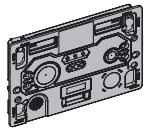

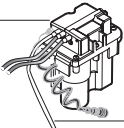
Keep the sensing window clean. Wipe with soft cloth and mild cleaner.

#### Notice:

- Do not use dust-removing powder, abrasive powder or any cleaner containing oil, acid or alkaline ingredient.
- Do not use spray air-refresher, disinfectant, or other deodorizing, cleaning solvent directly into the sensing window.
- Keep wires away from water.
- Recommended - 1352426 KOHLER glass cleaning solution



## SERVICE PARTS

<p>1351251 Fixed tube pack</p> 	<p>1418089 Air pipe pack</p> 
<p>1385768 Fixation plate pack</p> 	<p>1348766 Conversion Fixation</p> 
<p>1385769 Anti-theft screw pack</p> 	<p>1348758 Faceplate frame assy with cylinder</p> 
<p>1407653 Battery pack box assy</p> 	<p>1348763 Indian PCB asm</p> 
<p>1348760 DC glass cover assy</p> 	<p>1348705 Faceplate frame cover assy</p> 
<p>1348759 Indian faceplate asm</p> 	<p>1348726 Tapping screw ST3X10</p> 
<p>1407652 Pump control module assy</p> 	<p>1329769 Air Pipe</p> 