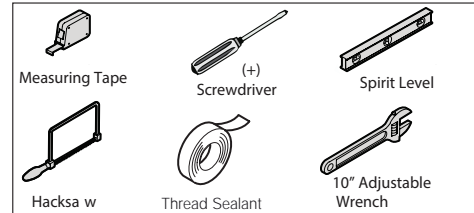


BEFORE YOU BEGIN

- Please read these instructions carefully to familiarize yourself with the required tools, materials, and installation sequences. Follow the sections that pertain to your particular installation. This will help you avoid costly mistakes. In addition to proper installation, read all operating and safety instructions.
- All information in these instructions is based upon the latest product information available at the time of publication. Kohler India reserves the right to make changes in product characteristics, packaging or availability at any time without notice.
- These instructions contain important care, cleaning, and warranty information - please leave instructions for the consumer.
- In case product is damaged when unpacked for first time, **please do not install the product and report to customer care immediately.**

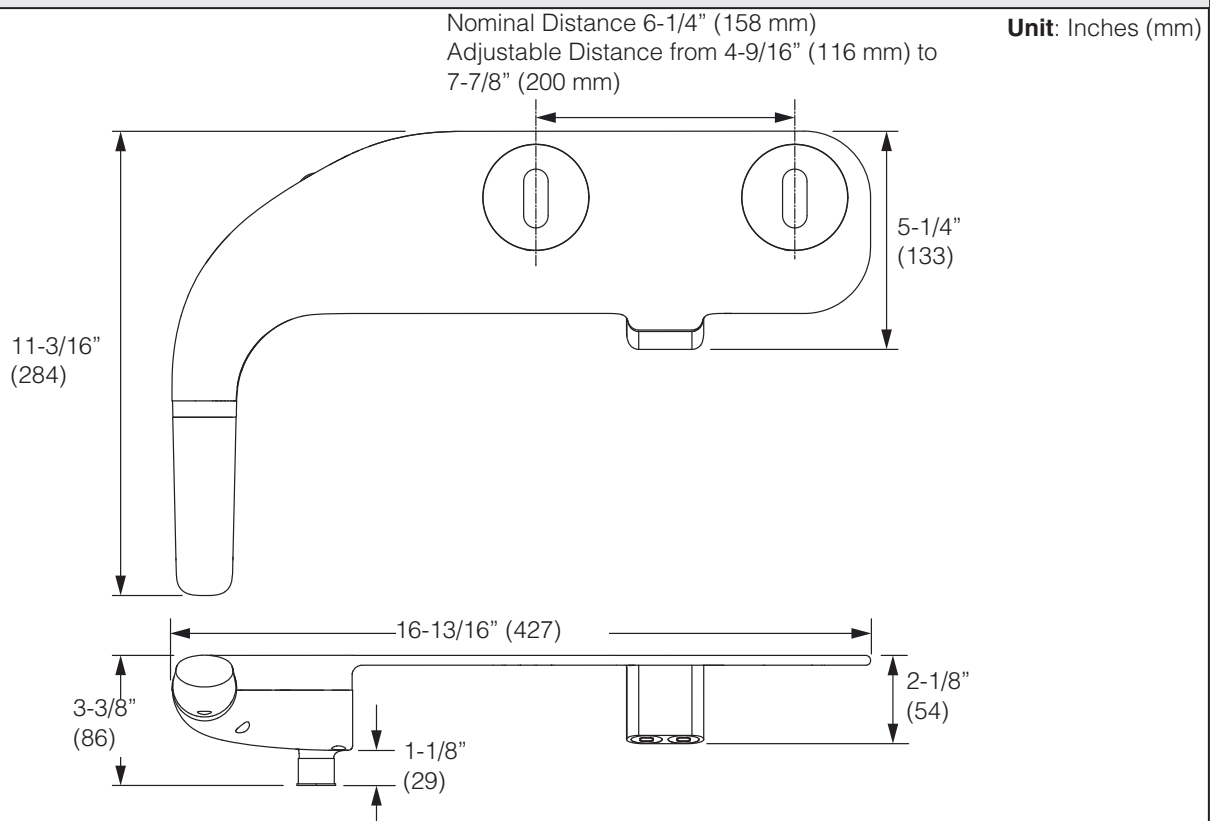
TOOLS & MATERIALS REQUIRED (Not supplied)



NOTES

- Observe all local plumbing and building codes.
- Shut off the water supply.
- Carefully inspect the new fixture for any sign of damage.
- Be very careful while handling vitreous china products.

ROUGH-IN DIMENSIONS



Notice:

22860IN-0

- Fixture dimensions are nominal and conform to tolerances according to ASME Standard A112. 19.2M.
- Product illustrations shown are representative only, actual products may vary.
- Kohler Co. reserves the right to make changes in product characteristics, packaging, or availability at any time without notice.

INSTALLATION INSTRUCTIONS

1. PREPARATION

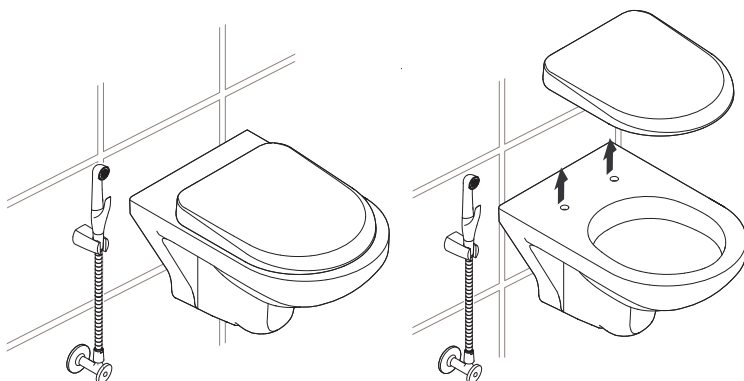
- Turn the water supply off.
- Install or relocate the supply tubing and waste pipe as necessary to conform to the rough-in dimensions.
- Install the shut-off valve.
- Install bowl, seat and aka health faucet.

CAUTION:

Do not under size waste piping as it will lead to clogging of the outlet and reduction in rate of waste outflow.

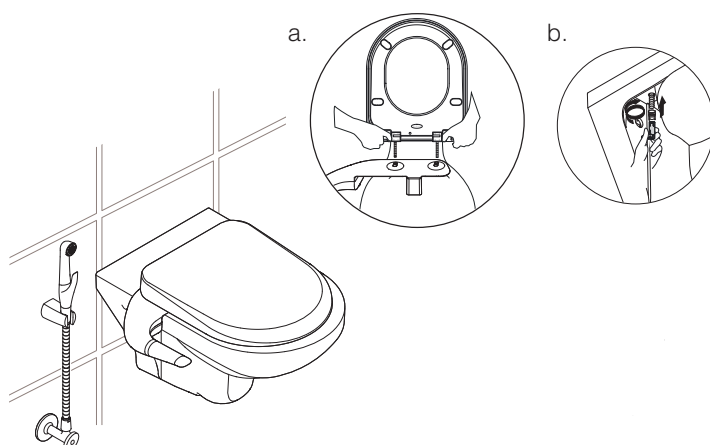
INSTALLATION INSTRUCTIONS

- 1** Remove the seat from bowl.

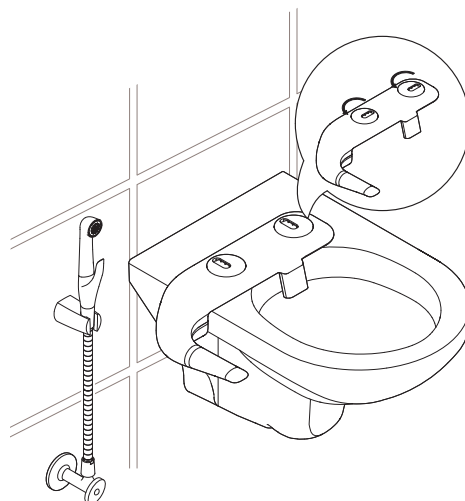


- 3** Install seat back onto the bowl.

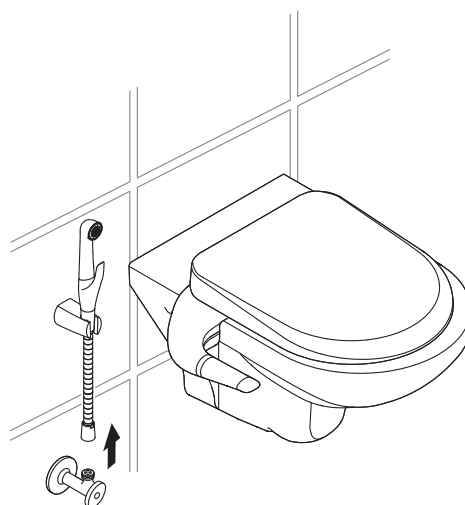
- Fix bolts in hinges of seat. Insert bolts into aligned holes of bowl and universal pureclean.
- Tighten nut with help of tightening tool.



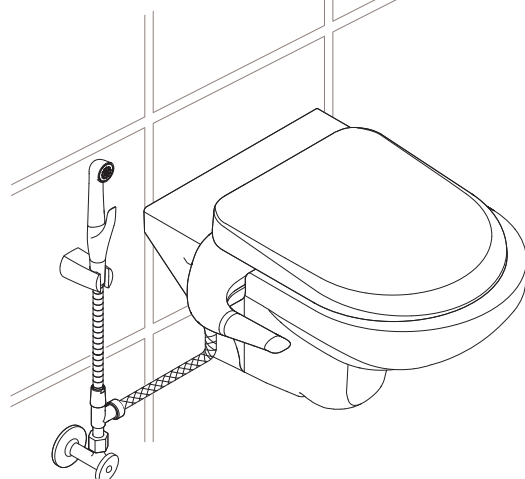
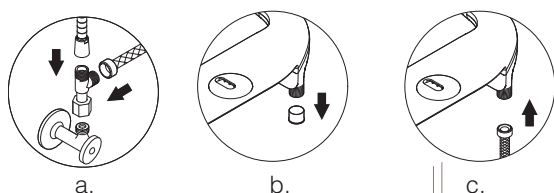
- 2** Carefully place the universal pureclean onto bowl. Align the mounting holes of universal pureclean and bowl. Rotate mounting disc of universal pureclean to align holes of bowl, if needed.



- 4** Turn off water supply. Remove hose of health faucet from water supply.



- 5**
- Connect nut side of T-connector to water supply valve. Re-connect hose of health faucet to one side of T-connector and other side to hose of universal pureclean.
 - Remove inlet cover from universal pureclean.
 - Connect other end of hose to the inlet of the universal pureclean.

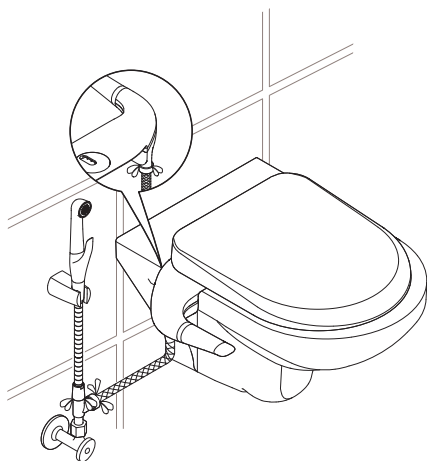


⚠ CAUTION:

Make sure that the filter does not fall from universal pureclean when removing the inlet cover.

6

Turn on water supply valve and check for any leakage. Tighten connections, if needed.

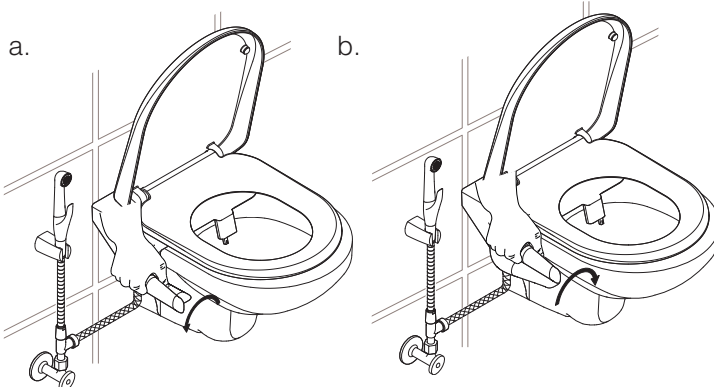


7

Rotate handle of universal pureclean by a quarter-turn (90°) to each side and check smooth functioning of each wand.

a. Rotate clockwise for rear wash.

b. Rotate anti-clockwise for front wash.



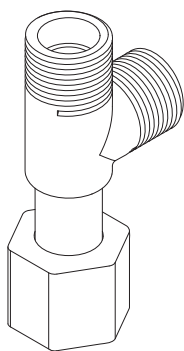
CONSUMER RESPONSIBILITIES

1. Do not stand, knock, or stack heavy objects on the universal pureclean. The load could damage it.
2. Clean the outside surface of your toilet seat with mild soap and warm water. Wipe the surface completely dry with a clean soft cloth.
3. Do not use any abrasive cleaners as they will scratch and dull the surface. Avoid any detergents, disinfectants, or cleaning products.
4. Avoid contact with abrasive chemicals and solvents such as nail polish removers, thinners, and aftershave lotions as they may damage the surface of your toilet seat.
5. To prevent any possible damage to the seat & its components, do not use strong acidic or strong alkaline cleaners. If the surface becomes excessively dirty, please use a mild general-purpose cleaner.
6. During closure, allow the seat to drop down at its own pace. Do not force the closure as it may damage the dampers.
7. Avoid direct exposure to strong lights such as sunlight, ultraviolet lamps, etc.

INSTALLATION PARTS INCLUDED IN BOX

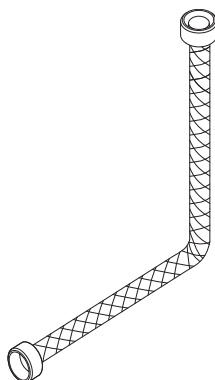
1461093

T-Connector Assembly



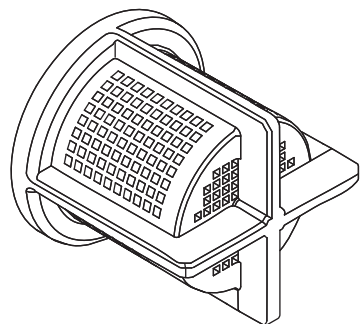
1409455

Inlet Hose

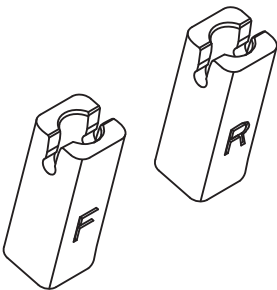


SERVICE PARTS

1422738
Filter



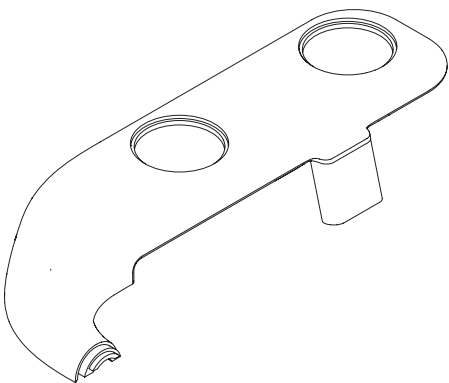
1471961
Nozzle Pack



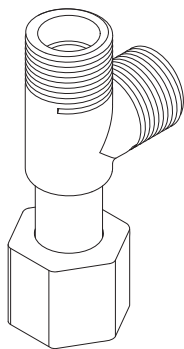
1458138
Nozzle Front

1458137
Nozzle Rear

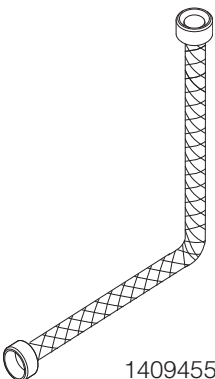
1461092
Water Channel Assembly



1461097
Accessory Pack



1461093
T-Connector Assembly



1409455
Inlet Hose