



PureWash™ M100

Toilet seat attachment for bidet functionality
K-22860IN-2

Features

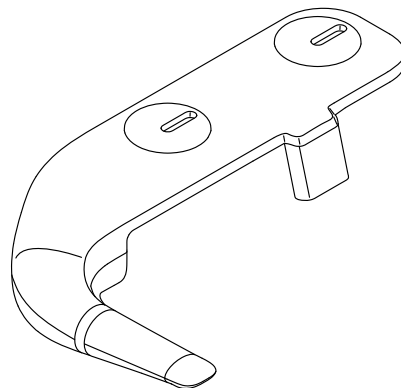
- Convenient side handle for adjusting water pressure
- Handle rotates to activate front or rear spray option
- Dual self-cleaning wands automatically rinse after each use
- Manually-operated handle requires no batteries or electrical power
- Fits most toilets

Material

- Plastic construction

Installation

- Requires connection to toilet water supply line. All hoses and connections are included



Codes/Standards

None Applicable

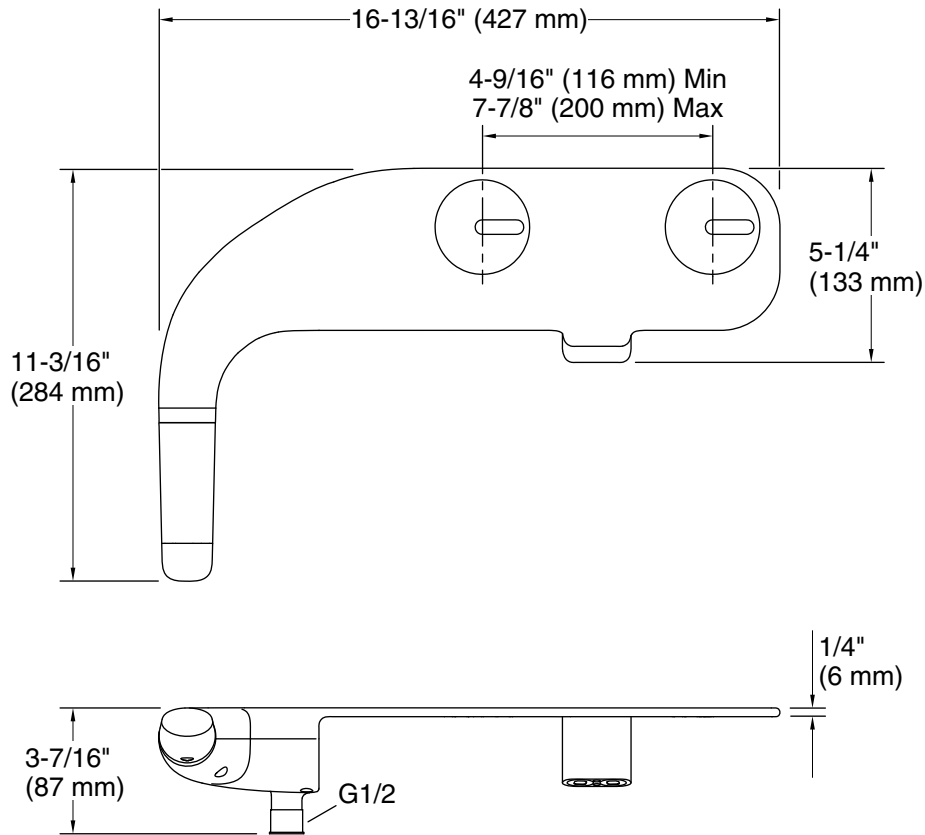
KOHLER® One-Year Limited Warranty

See website for detailed warranty information.



PureWash™ M100

Toilet seat attachment for bidet functionality
K-22860IN-2



Technical Information

All product dimensions are nominal.

Seat shape type: Elongated
Seat front type: Open-front
Seat-mounting holes: 6-1/4" (158 mm)

Notes

Install this product according to the installation instructions.