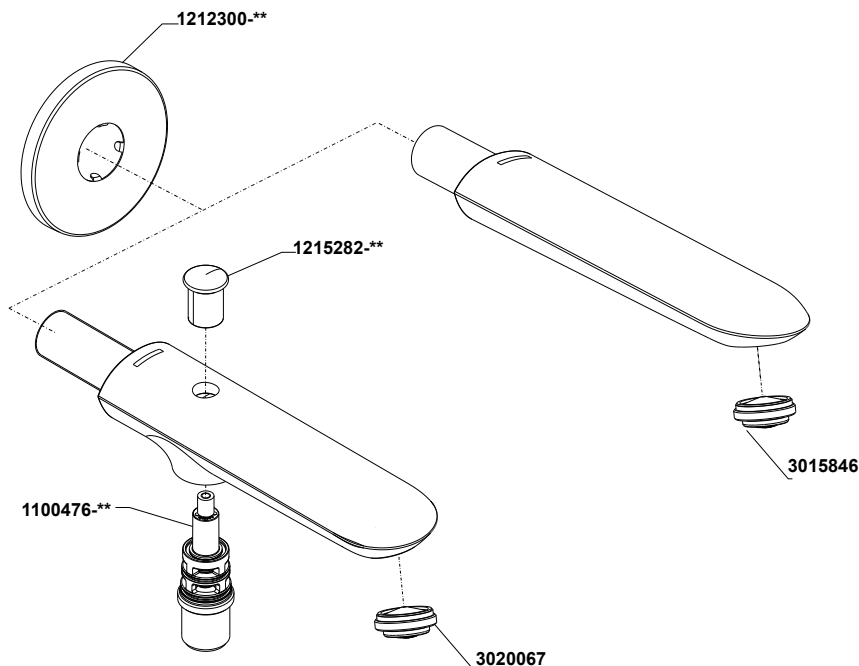


99467IN-\*\* BATH SPOUT W/O DIVERTER

99468IN-\*\* BATH SPOUT WITH DIVERTER



\*\*Color code must be specified when ordering

**IN**  **Kohler India Corporation Pvt. Ltd.**  
6th Floor, Office Block, Ambience Island, NH-8  
Gurgaon - 122002, Haryana, India

 Customer Care No : 1800 103 2244  
(Toll Free) & +91-124-4319685 / 86  
Customer Care Email : [indiacustomercare@kohler.com](mailto:indiacustomercare@kohler.com)  
[www.kohler.co.in](http://www.kohler.co.in)

99467IN-\*\*

BATH SPOUT W/O DIVERTER

99468IN-\*\*

BATH SPOUT WITH DIVERTER

### BEFORE YOU BEGIN

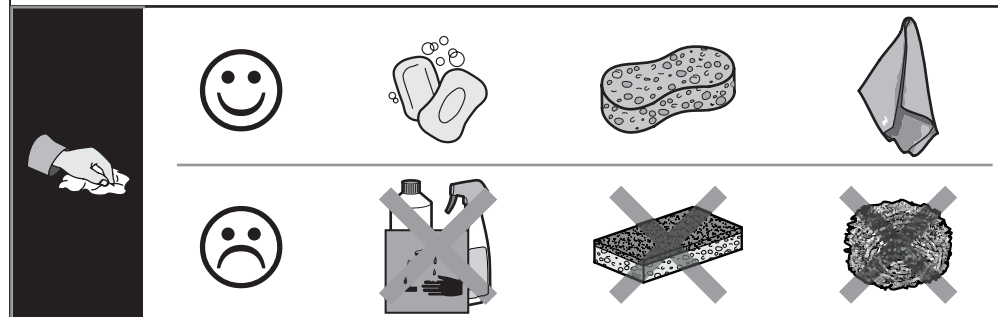
All information is based on the latest product information available at the time of publication. Kohler Co. reserves the right to make changes in product characteristics, packaging, or availability at any time without notice.

Please leave these instructions for the consumer. They contain important information.

#### NOTES:

1. Flush the water supply pipes thoroughly to remove debris.
2. Shut off the water supplies to the fitting.
3. Observe all local plumbing and building codes.



### CLEANING INSTRUCTION



### TOOLS REQUIRED

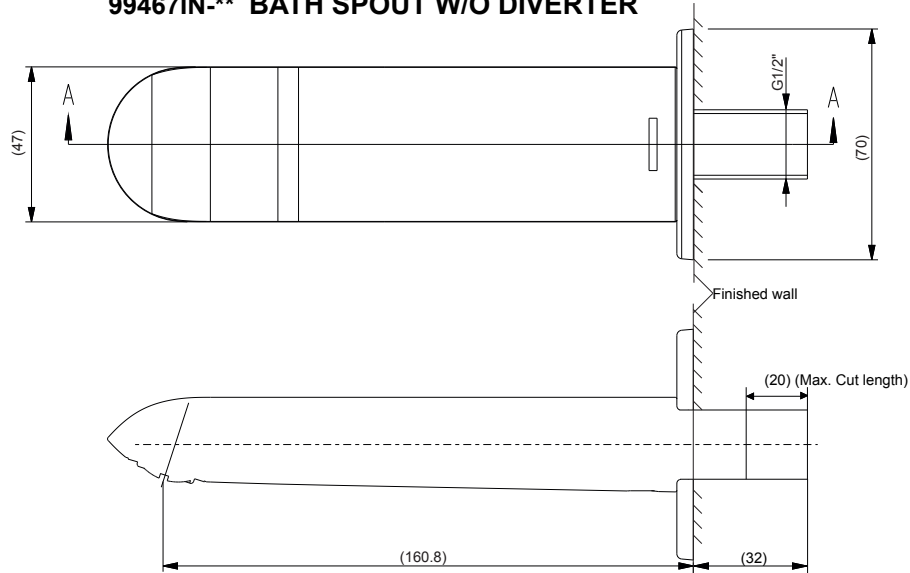


Coin

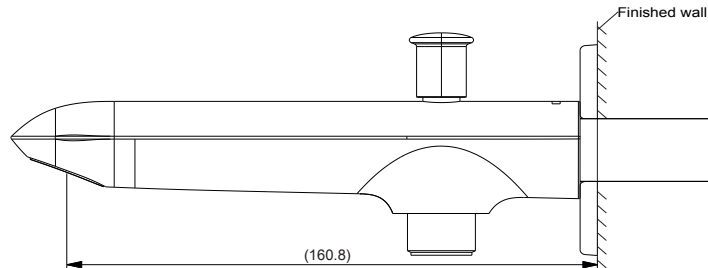
|   |          |     |                      |
|---|----------|-----|----------------------|
|            | <b>P</b> | Bar | 0.5 < <b>3</b> < 5.5 |
| Hot Water  | <b>T</b> | °C  | < <b>65</b>          |

## ROUGH IN DIMENSIONS

### 99467IN-\*\* BATH SPOUT W/O DIVERTER



### 99468IN-\*\* BATH SPOUT WITH DIVERTER



NOTE: ROUGH-IN DIMENSION SAME IN SKU'S W/ OR W/O DIVERTER, EXCEPT DIVERTER FEATURE

## INSTALLATION INSTRUCTIONS

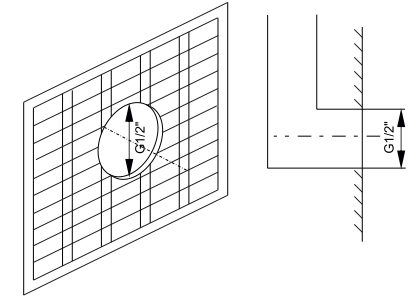
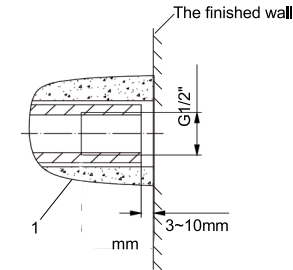
1



## INSTALLATION INSTRUCTIONS

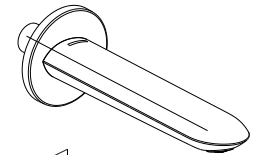
2

To perform installation, installer must provide G1/2" female supply fitting(1), keep proper position in the wall



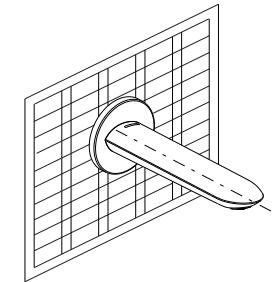
3

Slide the escutcheon(2) onto the spout assembly(3). Apply tape or thread sealant to G1/2" threads of the spout assembly. Cut the extra length of threaded part if required (Cut length limit 20 mm Max.).



4

Tighten the spout kit to the G1/2" female supply fitting. Adjust the spout downwards.



## INSTALLATION CHECKOUT

Ensure that all connections are tight.

Open the drain. Turn on the main water supply and check for leaks. Repair as required.

Flush water through spout for one minute to remove any debris. Turn off water supply and clean the aerator assembly. Tighten the aerator suitably after drain. Ensure there is no leakage from the sides of aerator after tightening.

