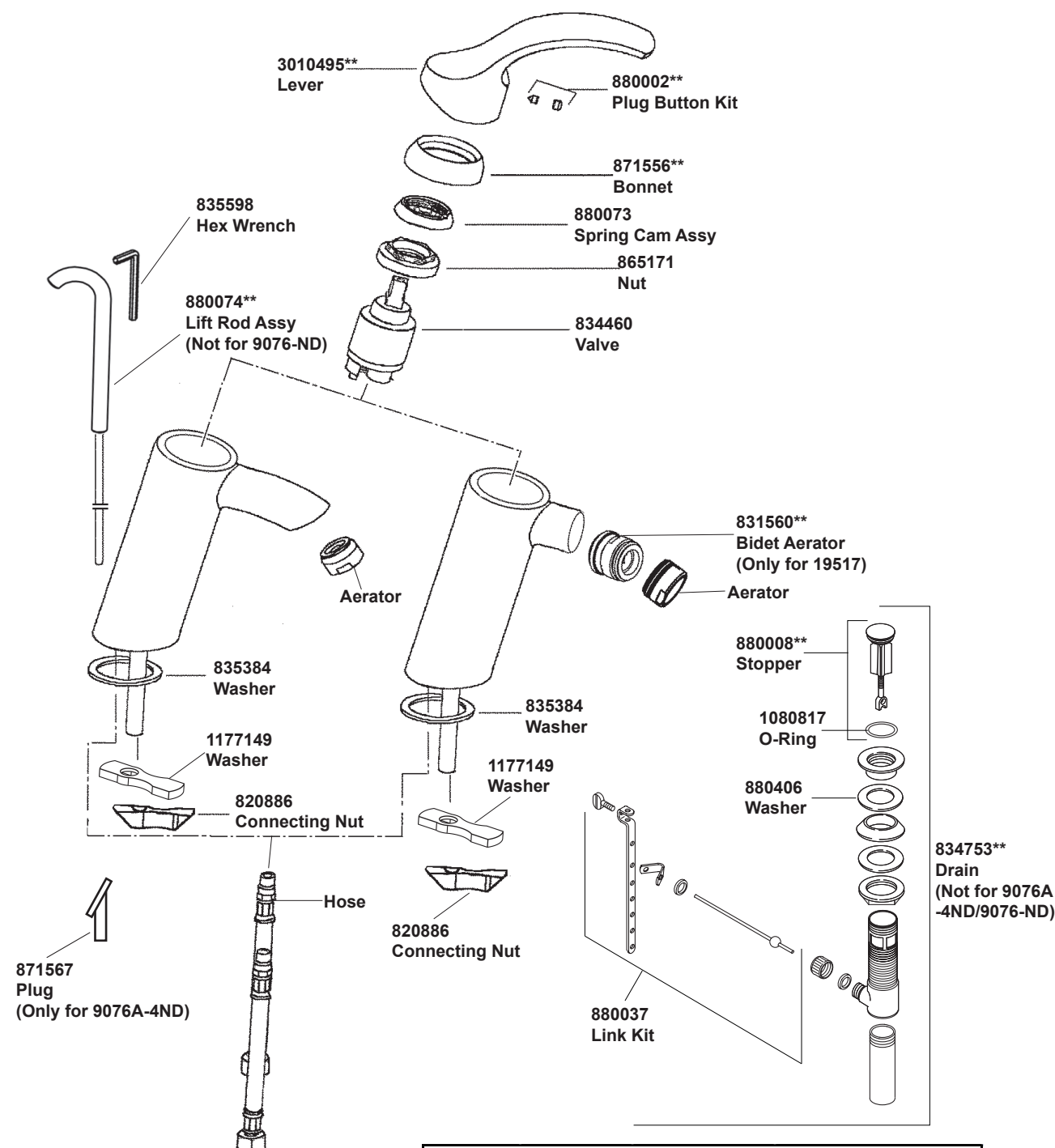


9076/9076-ND/9076A-4ND LAVATORY FAUCET
19517 BIDET FAUCET



9076**/19517**			
	9076X**	9076A-4ND**	9076IN**/19517IN**
Hose	834754	1054592	1024405
Aerator	837261**	1031237**	834562**

****Color code must be specified when ordering**

9076/9076-ND/9076A-4ND LAVATORY FAUCET
19517 BIDET FAUCET

BEFORE YOU BEGIN

All information is based on the latest product information available at the time of publication. Kohler Co. reserves the right to make changes in product characteristics, packaging, or availability at any time without notice.

Please leave these instructions for the consumer. They contain important information.

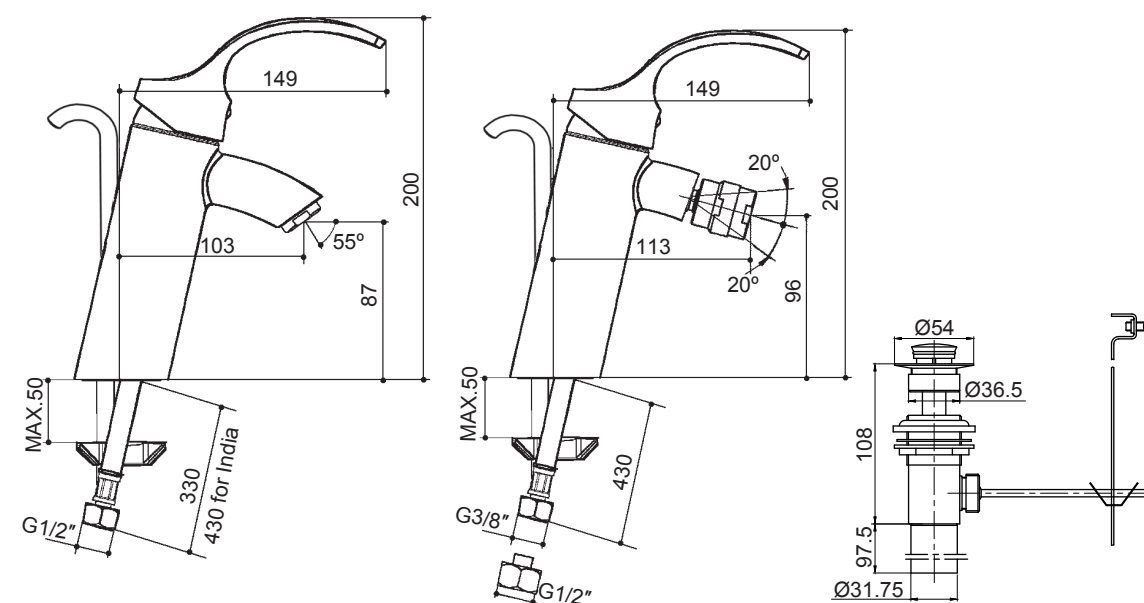
NOTES:

1. Flush the water supply pipes thoroughly to remove debris.
2. Inspect the supply tubing for damage. Replace as necessary.
3. Observe local plumbing codes.
4. If possible, install the faucet before installing the lavatory.

HANDLE OPERATION

Lift the handle gently, turn left for hot water, right for cold water. There are two stops in both flow and hot water control conserve water and energy.

ROUGH-IN DIMENSIONS



INSTALLATION

How To Install The Faucet

The product you have selected has quick, drop-in installation feature. Flush the water supply pipes thoroughly to remove debris.

Slip the washer(1) over the flexible hoses and mounting stud, and into the groove on the body assembly.

If needed to take off the hoses to repair, reinstall and tighten them by hand.

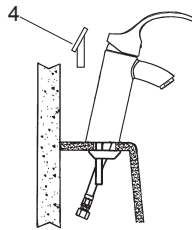
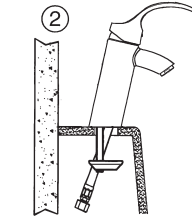
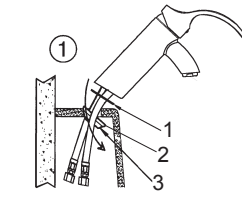
①Insert flexible hoses and tighten it. Insert the washer(2) and the connecting nut(3) into the hole in deck. Position the connecting nut between flexible hoses.

②Center the washer and faucet over hole. Tighten with supplied wrench. Check that the nut is centered and flexible hoses hang freely.

Attach the hoses to water supplies. When facing front of faucet, the left hose is hot water, the right hose is cold water.

For 9076A-4ND

Insert the plug(4) into hole on the back of the faucet if not install pop-up drain.



How To Install The Drain(Not For 9076A-4ND /9076-ND)

Remove flange(6) from drain body(8). Slide the washer(7) onto the underside of the drain flange. Apply thread tape to tailpiece(9) and install it to drain body(8). Insert drain body from underside of bidet with drain lever hole (13) facing to the back of the bidet. Thread flange(6) onto drain body by hand. Tighten the locknut(12) by hand from the underside .

Place stopper(11) into drain body aligning the flat side of stopper hole(10) with the drain lever hole.

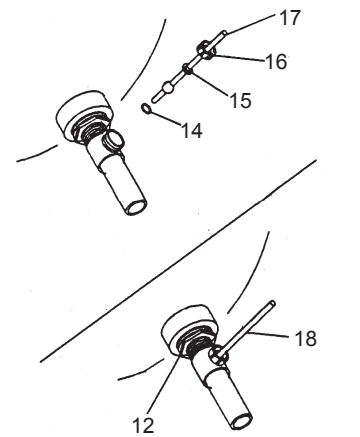
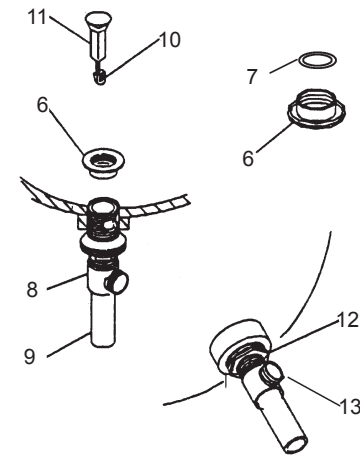
NOTE: If needed apply a ring of plumbers putty around the underside of the drain flange(6), instead of using washer(7).

Place the rubber washer(14) into the drain lever hole. Put another plastic washer(15) and retaining nut(16) into the long end of the ball lever rod(17).

Insert the ball lever assembly(18) into the drain lever hole and through the stopper hole, and tighten the retaining nut.

Be sure that the ball lever points to the back of the bidet. Tighten the locknut on the drain body. Remove any excess putty.

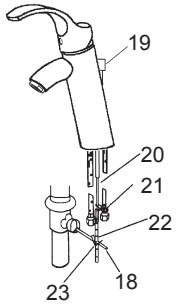
NOTE: Do not reposition the drain after the locknut is tightened, or you may break the putty seal.



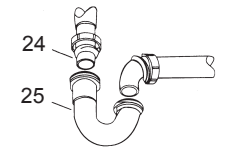
Assemble thumb screw(21) to link(22), and link onto ball lever rod with 'V' clip(23). Slide lift rod(20) through hole in faucet and into the hole in link. Position the lift rod so bottom of the lift rod knob(19) rests against the faucet body.

Push the ball lever down into the open position.

Tighten thumb screw.



Connect the tailpiece(24) to the trap(25). The tailpiece should extend 25mm to 50mm into the trap.



INSTALLATION CHECKOUT

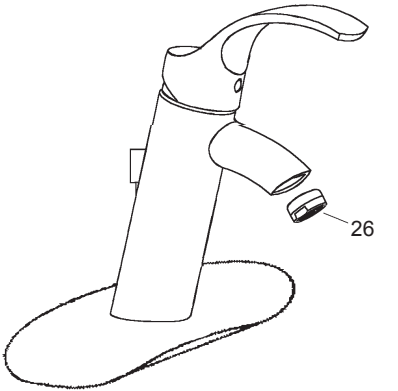
Ensure that all coupling nuts are tight.

Ensure that the lever handle is in the down position.

Open the drain.

Turn on the main water supply, and check for leaks. Repair as needed.

Remove the aerator(26). Run hot and cold water through the faucet for about one minute to remove any debris. Check for leaks. Remove any debris from the aerator assembly. Shut the faucet off, and reinstall the aerator assembly.



CLEANING INSTRUCTIONS

All Finishes: Clean the finish with mild soap and warm water. Wipe entire surface completely dry with clean soft cloth. Many cleaners may contain chemicals, such as ammonia, chlorine, toilet cleaner etc. which could adversely affect the finish and are not recommended for cleaning.

Do not use abrasive cleaners or solvents on Kohler faucets and fittings.