

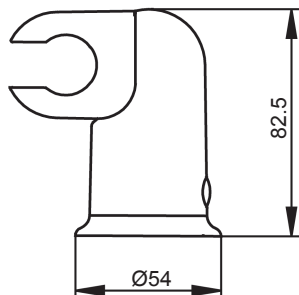
9038 9039 9040 BRACKET

BEFORE YOU BEGIN

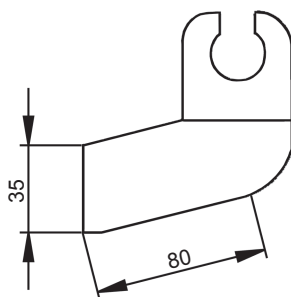
All information is based on the latest product information available at the time of publication. Kohler Co. reserves the right to make changes in product characteristics, packaging, or availability at any time without notice.

Please leave these instructions for the consumer. They contain important information.

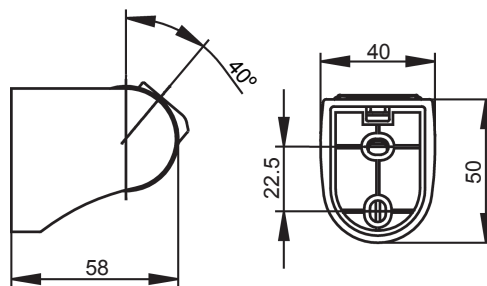
ROUGH-IN DIMENSIONS



9038



9039

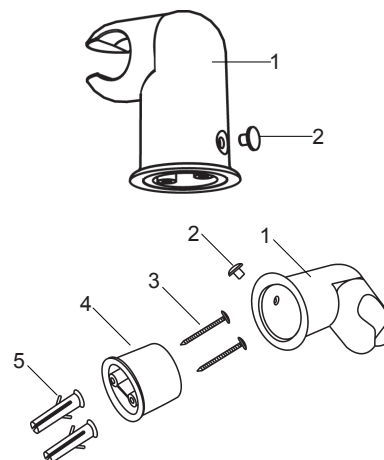


9040

INSTALLATION

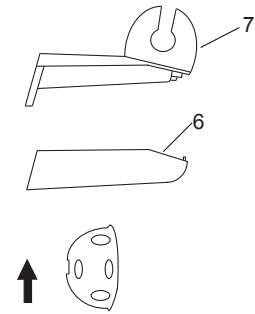
For 9038

Determine a suitable location on the finished wall to install the bracket. Take off the locking pin(2) from the bracket(1). Take out the self-tapping screws(3) and anchors(5) from the inside of the bracket by pulling out the plastic sleeve(4). Mark bracket base mounting hole location on the wall. Drill two holes in the finished wall as required. Press the anchors into the holes and screw the self-tapping screws into the anchors through the sleeve. Tighten them by screwdriver. Align the bulge of the bracket with the slot of the sleeve. Slide the bracket onto the sleeve and insert the locking pin into the hole of bracket and sleeve.



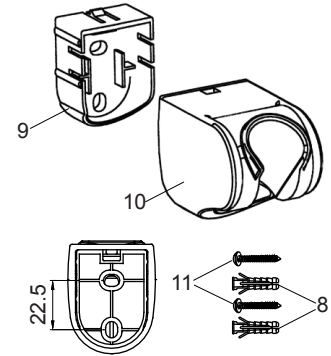
For 9039

Determine a suitable location on the finished wall to install the bracket. Pry between the bracket cover(6) and base(7) to separate the two parts. Mark bracket base mounting hole locations on wall as shown. Drill two holes in the finished wall as required, for the installation screws and anchors. Tighten screws to secure bracket base to the finished wall. Replace bracket cover onto bracket base.



For 9040

Determine a suitable location on the finished wall to install the bracket. Mark bracket base mounting hole locations on the wall according to the dimension. Drill two holes on the finished wall, the holes should match the anchors(8). Install the anchors. Tighten screws(11) to secure bracket base(9). Put the bracket(10) onto the bracket base and lock by stopper.



CLEANING INSTRUCTIONS

All Finishes: Clean the finish with mild soap and warm water. Wipe entire surface completely dry with clean soft cloth. Many cleaners may contain chemicals, such as ammonia, chlorine, toilet cleaner etc. which could adversely affect the finish and are not recommended for cleaning.

Do not use abrasive cleaners or solvents on Kohler faucets and fittings.