

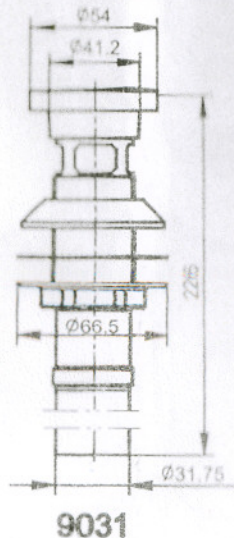
9031 GRID DRAIN

BEFORE YOU BEGIN

All information is based on the latest product information available at the time of publication. Kohler Co. reserves the right to make changes in product characteristics, packaging, or availability at any time without notice.

Please leave these instructions for the consumer. They contain important information.

ROUGH-IN DIMENSIONS

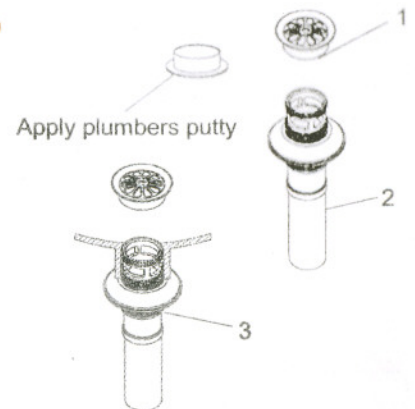


INSTALLATION

Screw off the drain flange(1) from drain. Apply a ring of plumbers putty around the underside of the drain flange. Insert the drain body (2) into the underside of the lavatory.

Thread the drain flange onto the drain body. Tighten the locknut(3) by hand from the underside of the fixture. Remove any excess putty.

Notes: Do not reposition the drain after the locknut is tightened, or you may break the putty seal.



CLEANING INSTRUCTIONS

All Finishes: Clean the finish with mild soap and warm water. Wipe entire surface completely dry with clean soft cloth. Many cleaners may contain chemicals, such as ammonia, chlorine, toilet cleaner etc. which could adversely affect the finish and are not recommended for cleaning.

Do not use abrasive cleaners or solvents on Kohler drains and fittings.

SERVICE PARTS

