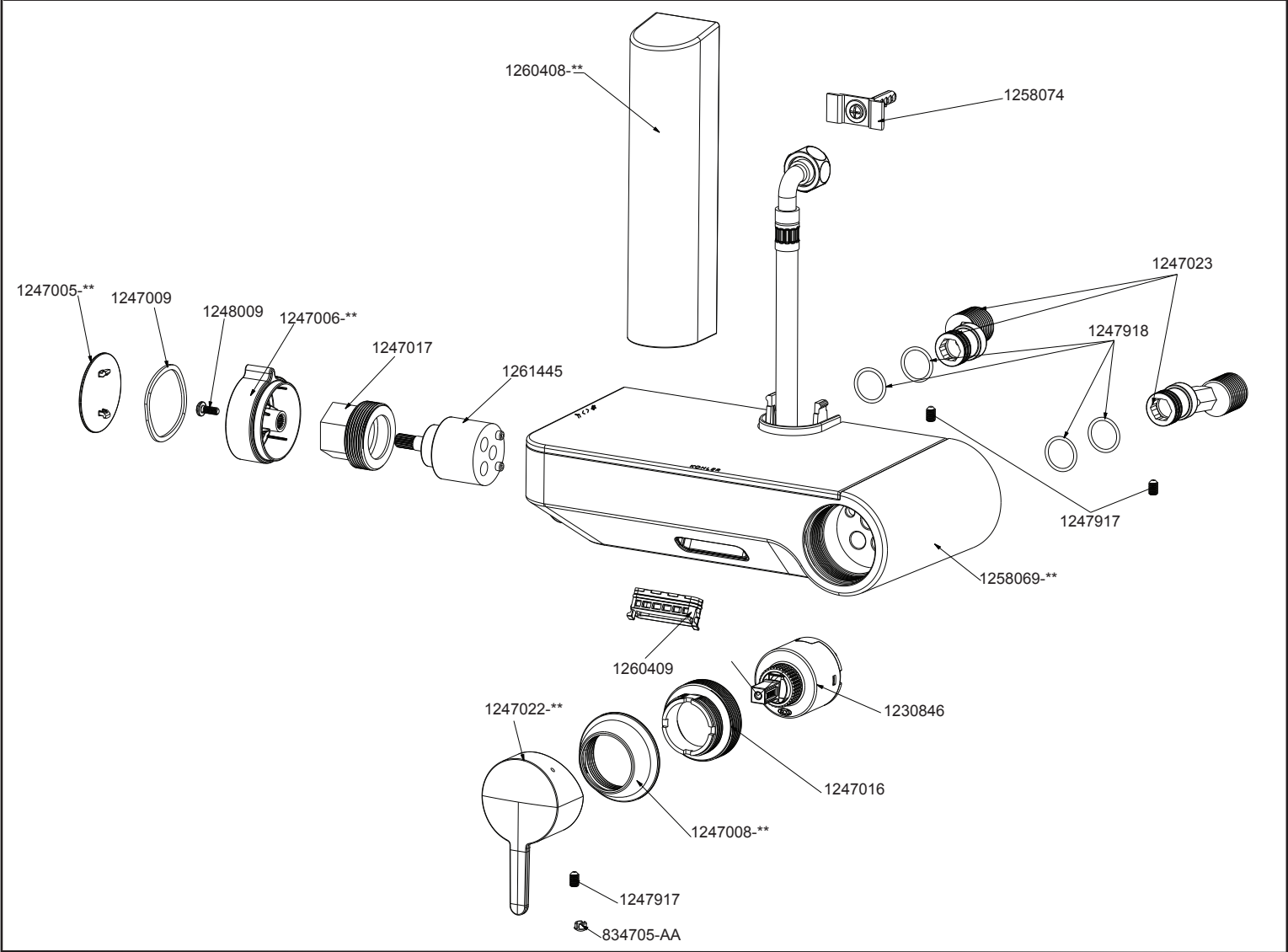


SERVICE PARTS



IN

Kohler India Corporation Pvt. Ltd.
6th Floor. Office Block, Ambience Island, NH-8
Gurgaon - 122001, Haryana, India
Customer Care No : 1800 103 2244
(Toll Free) & +91-124-4319685 / 86
Customer Care Email : indiacustomercare@kohler.com
www.kohler.co.in

KOHLER®

INSTALLATION INSTRUCTIONS

TOOBI

75457IN-4-** TOOBI WALL-MOUNT EXPOSED BATH & SHOWER

BEFORE YOU BEGIN

All information is based on the latest product information available at the time of publication. Kohler Co. reserves the right to make changes in product characteristics, packaging, or availability at any time without notice.
Please leave these instructions for the consumer. They contain important information.

- NOTE:**
- 1. Flush the water supply pipes thoroughly to remove any debris.
 - 2. Observe all local plumbing and building codes.

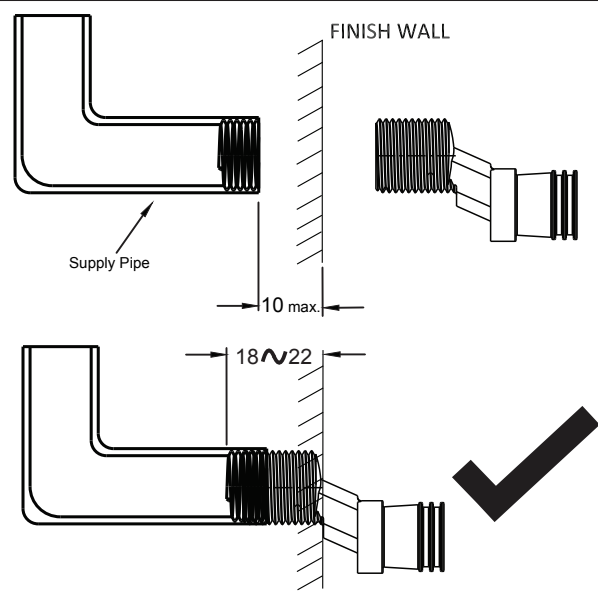
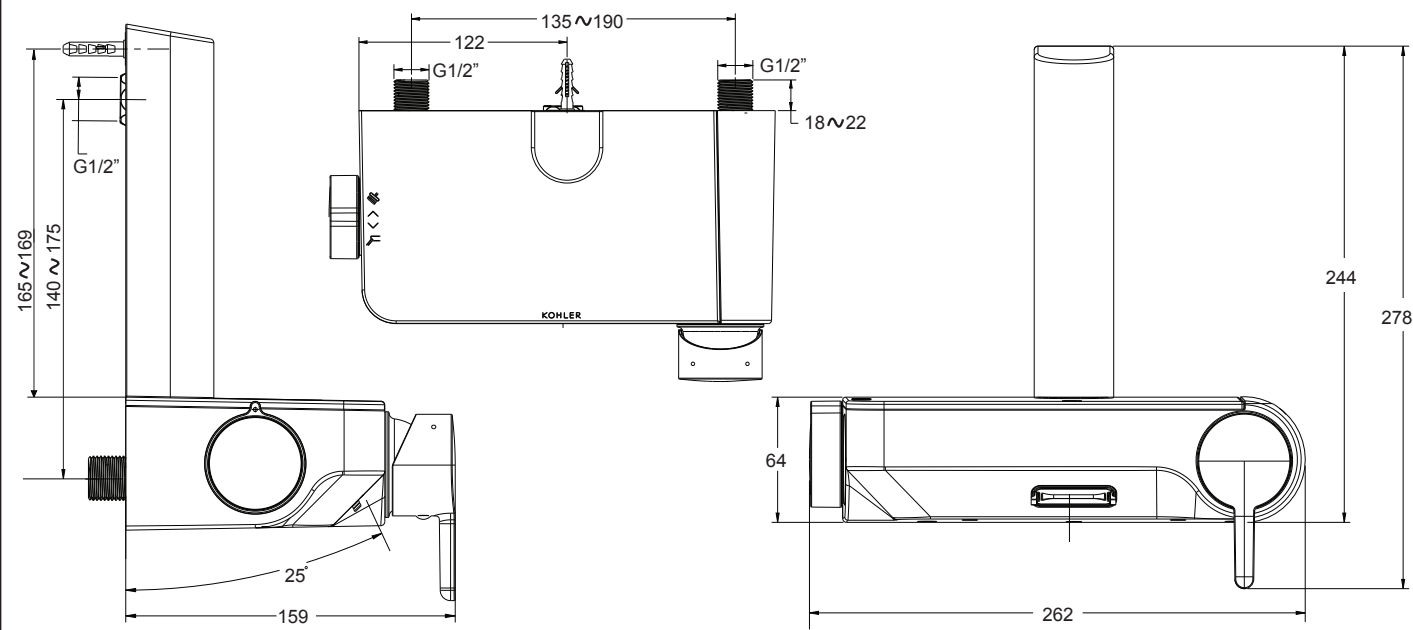
CLEANING INSTRUCTION

TOOLS REQUIRED

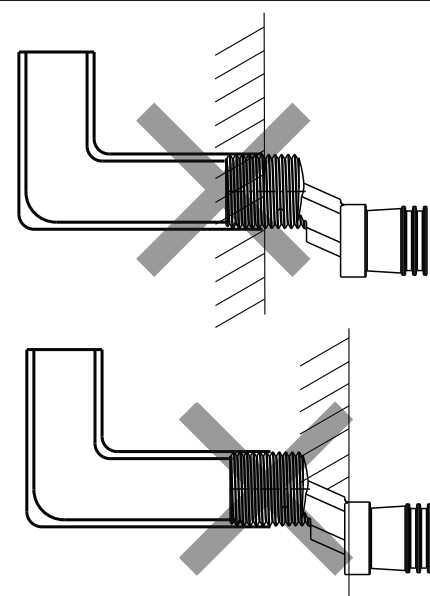
8					12 2.5

	P	Bar	0.5 < 3 < 5.5
	T	°C	< 65

ROUGH - IN DIMENSIONS

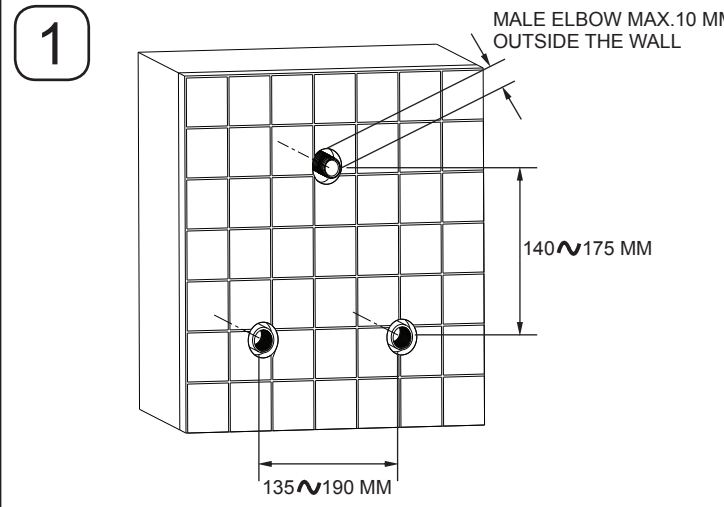


CORRECT INSTALLATION METHOD

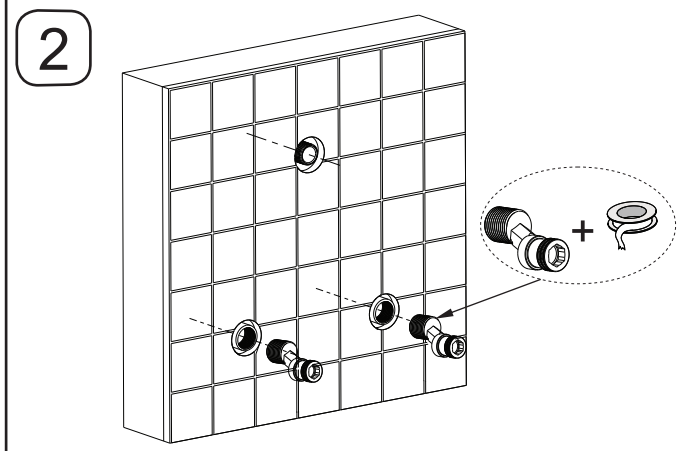


INCORRECT INSTALLATION METHOD

INSTALLATION - ASSEMBLY

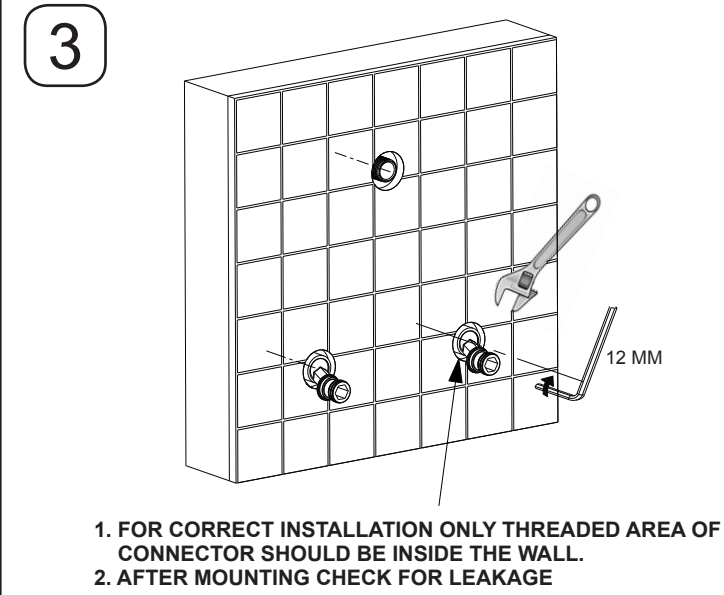


WALL HOLE CENTER DISTANCE

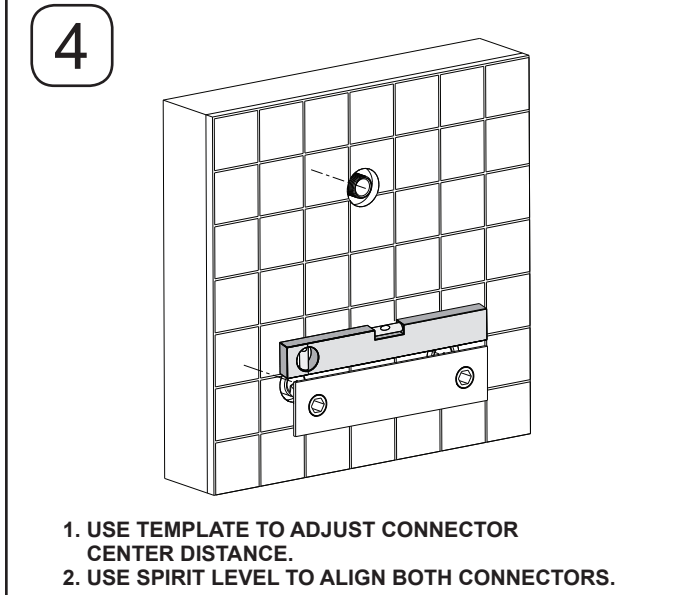


CONNECTOR ASSEMBLY

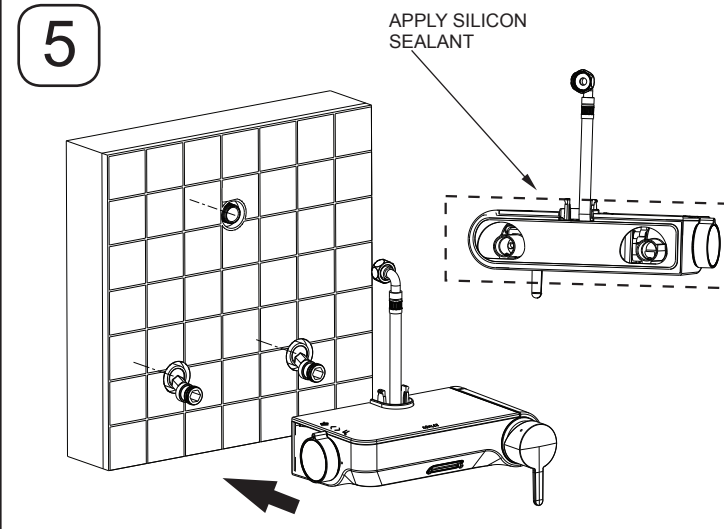
INSTALLATION - ASSEMBLY



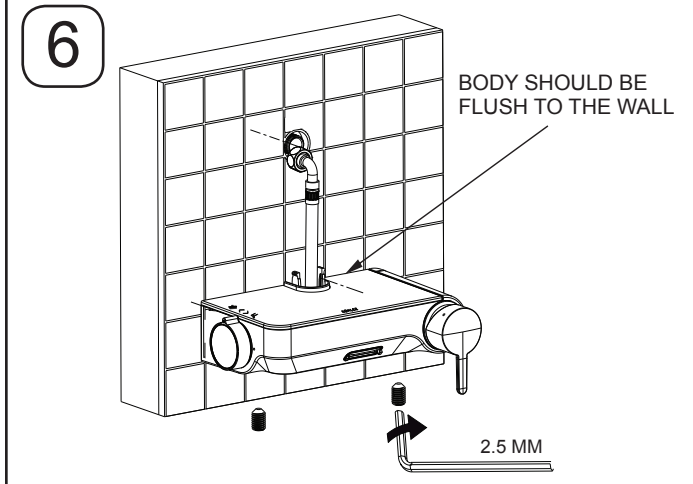
CONNECTOR ASSEMBLY



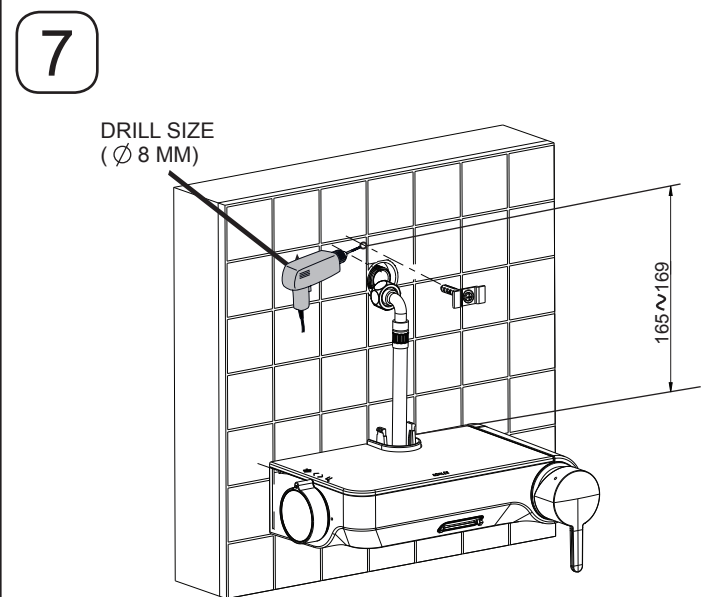
CONNECTOR ASSEMBLY



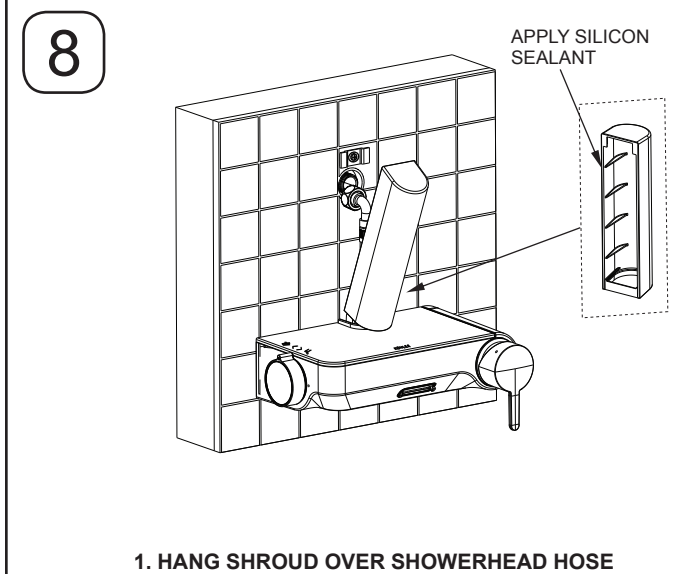
BODY ASSEMBLY



BODY ASSEMBLY



SHROUD SCREW ASSEMBLY



SHROUD ASSEMBLY