

OPERATION INSTRUCTIONS

Lift the handle slightly to turn on the faucet. Turn to vertical position for cold water, horizontal position for hot water. Water flows out from spout when faucet diverter is in the normal position and it's diverted to shower column when the diverter knob is lifted.

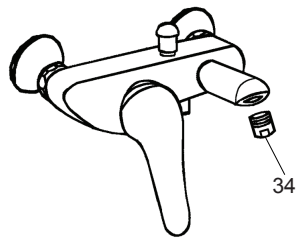
Turn the diverter handle to the vertical upwards, water will flow from the handspray; turn it to the vertical downwards, the showerhead will work; turn it to the position between the vertical upwards and the vertical downwards, water will flow the showerhead and the handspray.

INSTALLATION CHECKOUT

Ensure that all connections are tight. Ensure that the handle is in the off position.

Turn on the drain and main water supply, and check for leaks. Repair as needed.

Remove the aerator assembly(34). Run hot and cold water through spout about one minute to remove any debris. Clean the aerator assembly. Shut off the faucet. Reinstall the aerator assembly.



CLEANING INSTRUCTIONS

All Finishes: Clean the finish with mild soap and warm water. Wipe entire surface completely dry with clean soft cloth. Many cleaners may contain chemicals, such as ammonia, chlorine, toilet cleaner etc. which could adversely affect the finish and are not recommended for cleaning.

Do not use abrasive cleaners or solvents on Kohler faucets and fittings.

KOHLER®

INSTALLATION INSTRUCTIONS

DEON

Wall-Mount Bath & Dual Shower Faucet

12959-4 72704-4 Wall-Mount Bath & Dual Shower Faucet

BEFORE YOU BEGIN

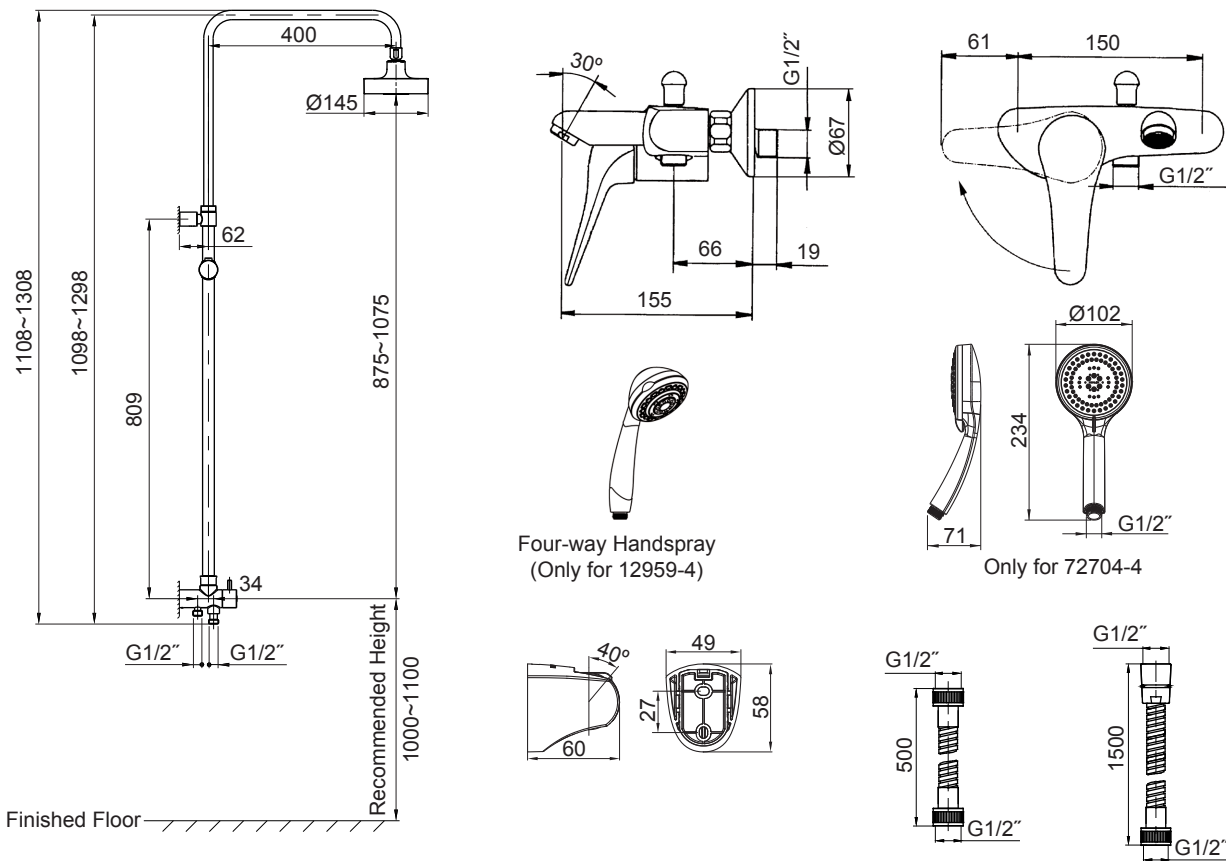
All information is based on the latest product information available at the time of publication. Kohler Co. reserves the right to make changes in product characteristics, packaging, or availability at any time without notice.

Please leave these instructions for the consumer. They contain important information.

NOTES:

- 1. Shut off the water supplies to the fitting.
- 2. Inspect the supply tubing for damage. Replace as necessary.
- 3. Observe local plumbing codes.
- 4. The minimum inlet water pressure for diverter is 0.05MPa(0.5bar).
- 5. Recommended minimum working pressures is 1bar(0.1Mpa).
- 6. The highest working pressure for showerhead & handspray is 0.5MPa(5bar). If it exceeds 0.5MPa(5bar), a pressure reducer is needed. The highest water and environment temperature is 60°C. Please keep handspray showerhead and the shower arm away from heater, or it may become damaged and cause injury to the user.

ROUGH-IN DIMENSIONS



# INSTALLATION

## How to Install the Faucet

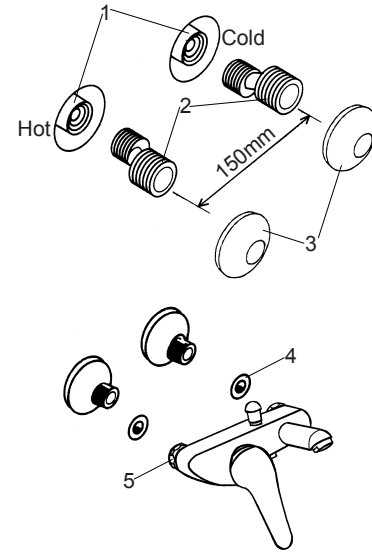
To perform installation, installer must provide G1/2" female supply fittings(1), spaced 150mm apart and level. The supply fittings should be vertical and not beyond the finished wall. Hot supply pipe must be located on the left.

Flush the water supply pipes thoroughly to remove debris.

Install the two offset connectors(2) into the hot and cold supply pipes. Use appropriate thread sealants or thread tape on pipe threads.

Adjust the center-to-center distance between the connectors to 150mm and level. Thread the escutcheons(3) onto the connectors until they are against the finished wall.

Put the washers(4) into the nuts(5), thread the nuts to connectors. Tighten the nuts with strap wrench or soft cloth between product and regular wrench.



## How to Install the Slide Bar

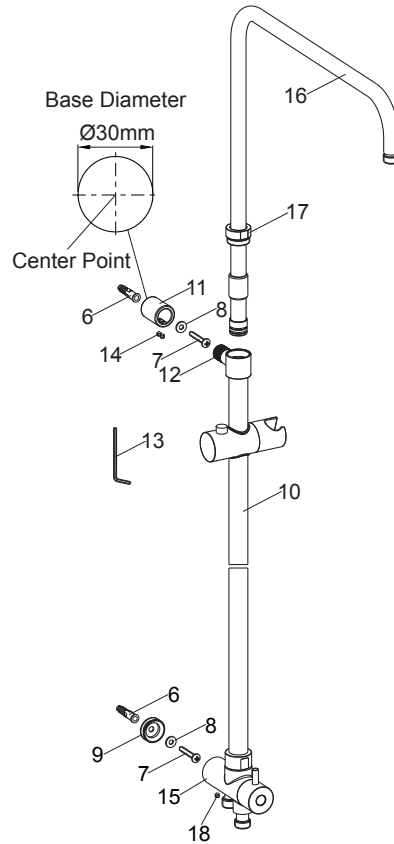
Select a location in vertical wall to install shower column according to rough-in dimensions.

Drill the lower hole to install a anchor as anchors(6) diameter in the vertical position in the finished wall. Press a anchor into the hole. Secure the base(9) by the self-tapping screw(7) with the washer(8).

Rehearse the slide bar kit(10) installation for the upper anchor mounting location determination. Slide the base(11) onto the connector(12) that insert into the base about 26mm. Screw the screws(14) into the base(11) with the hex wrench(13), and tighten them.

Install the diverter body(15) onto the base(9). Place the diverter body and the base(11) against the finished wall. Mark the diameter of the base(11) with a pencil. Remove the slide bar kit. Loosen the screws(14) with the hex wrench (**NOTE:** Don't lose the screws.), remove the base(11). Mark the center point of the base diameter with a pencil.

Drill a hole on the center point as anchors(6) diameter. Press a anchor into the hole. Secure the base(11) by the self-tapping screw(7) with the washer(8), and make sure two screw holes of the base(11) vertically downwards.



Remove and discard the guard from the tube kit(16), then install it into the slide bar kit. Install the nut(17) onto the tube kit with soft cloth between internal hole of the nut and the tube kit. Then screw the nut onto the slide bar kit with strap wrench or soft cloth between the nut and regular wrench.

Install the connector(12) and the diverter body(15) to the base, and place the diverter body against the finished wall, and the connector insert into the base(11) about 26mm.

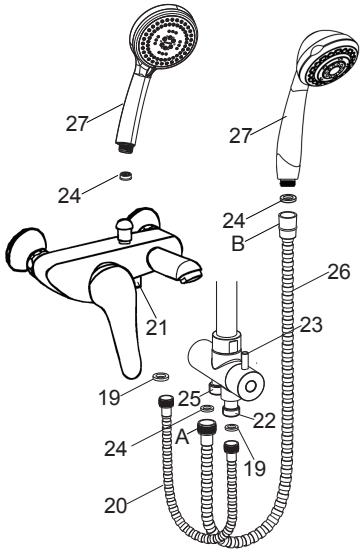
Screw the screw(18) into the diverter body with the hex wrench, and tighten it. Tighten the screws(14) with the hex wrench.

## How to Install the Handspray and the Hose

Tighten 500mm length hose(20) to the outlet(21) and the connector(22) with two washers(19).

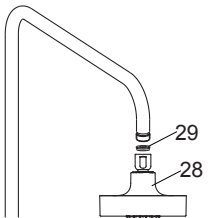
Lift the faucet diverter. Turn the diverter handle(23) to the vertical upwards and run hot and cold water for one minute to remove any debris.

Tighten the end A of 1500mm length hose(26) to the connector(25) with filter washer(24). Tighten the end B of the hose(26) to the handspray(27) with filter washer(24).



## How to Install the Showerhead

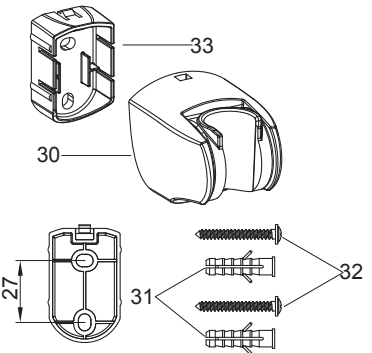
Lift the faucet diverter, turn the diverter handle(23) to the vertical downwards and run hot and cold water for one minute to remove any debris before the showerhead (28) is installed. Connect the showerhead to the tube kit outlet with the washer(29), and tighten the showerhead with strap wrench.



## How to Install the Shower Bracket

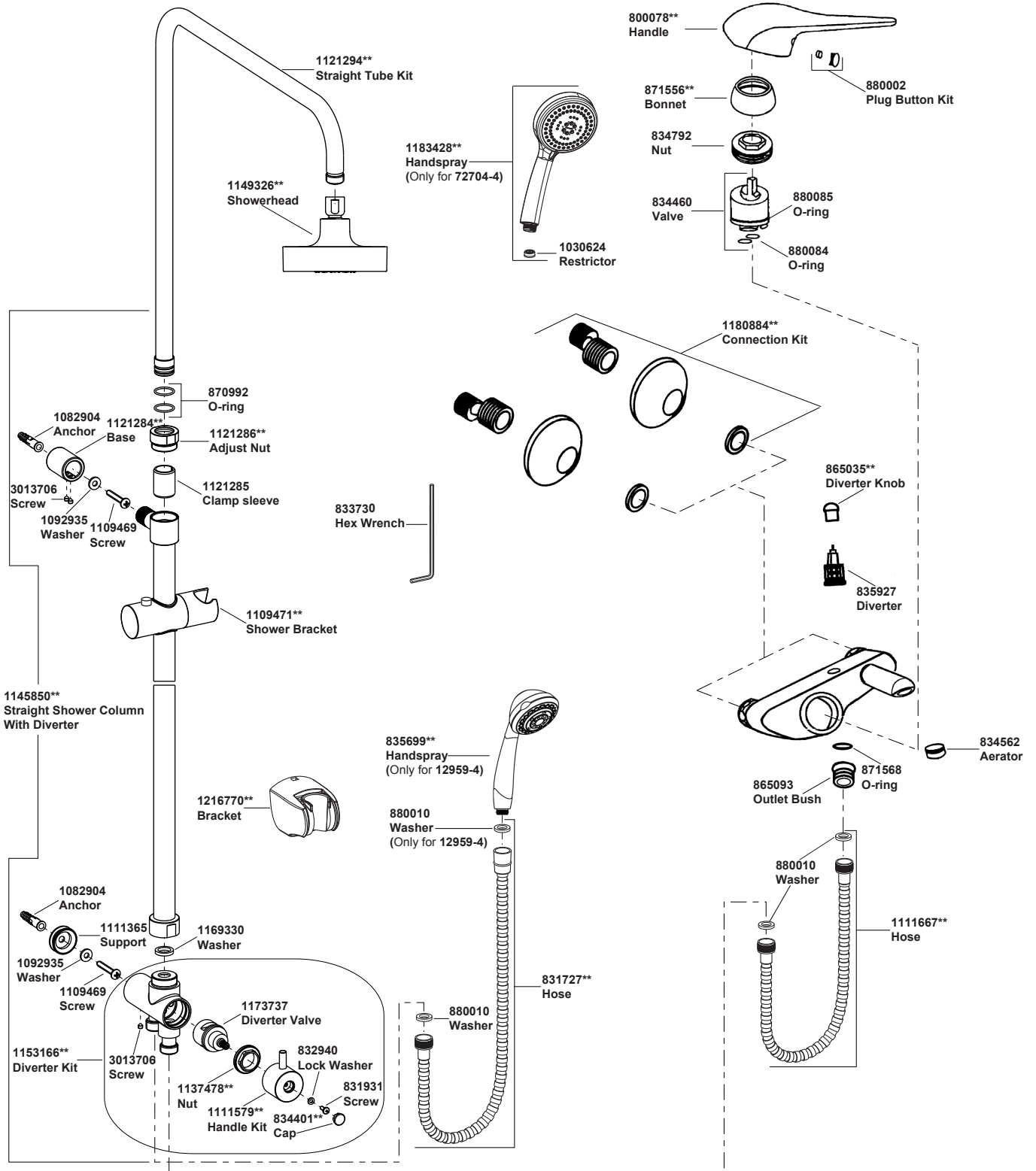
Determine a suitable location on the finished wall to install the bracket. Mark bracket base mounting hole locations on the wall according to the dimension. Drill two holes on the finished wall, the holes should match the anchors(31). Install the anchors.

Tighten screws(32) to secure bracket base(33, flat side upward). Put the bracket(30) onto the bracket base and lock by stopper.



## Wall-Mount Bath & Dual Shower Faucet

**12959-4 72704-4 Wall-Mount Bath & Dual Shower Faucet**



**\*\*Color code must be specified when ordering**