



IN



Kohler India Corporation Pvt. Ltd.
6th Floor, Office Block, Ambiance Island, NH-8
Gurgaon - 122002, Haryana, India



Customer Care No : 1800 103 2244
(Toll Free) & +91-124-4319685 / 86
Customer Care Email : indiacustomercare@kohler.com
www.kohler.co.in

KOHLER®

INSTALLATION INSTRUCTIONS

72419IN 72425IN SHOWERHEAD WITH ARM & ESCUTCHEON
72415IN 72421IN HAND SHOWER WITH METAL HOSE

BEFORE YOU BEGIN

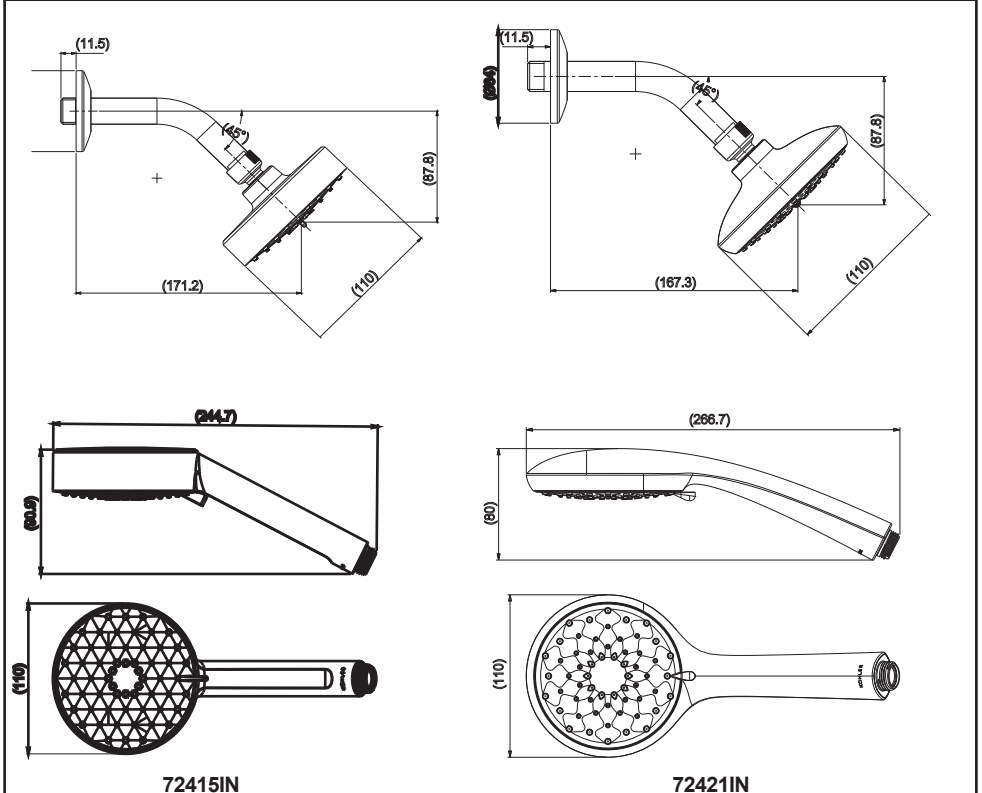
All information is based on the latest product information available at the time of publication. kohler Co. reserves the right to make changes in product characteristics, packaging, or availability at any time without notice.

Please leave these instructions for the consumer. They contain important information.

NOTE:

1. Observe all local plumbing and building codes.
2. Flush the water supply pipes thoroughly to remove any debris.
3. Highest working pressure for handspray & shower head is 0.5MPa (5 bar). If it exceeds 0.5MPa(5 bar), a pressure reducer is needed. The highest and environment temperature is 60°C. Please keep handspray, shower head and shower arm away from heater, or it may get damaged and cause injury to the user.

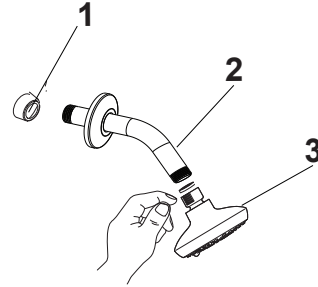
ROUGH-IN DIMENSIONS (in mm)



INSTALLATION

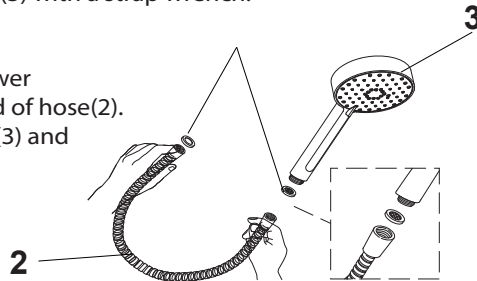
SHOWER HEAD -

1. Remove the temporary nipple.
2. Slide the escutcheon over the shower arm(2).
3. Apply tape or sealant to the shower arm, and install the shower arm into the shower elbow(1).
4. Tight with a strap wrench. Push the escutcheon against the wall.
5. Flush both water supplies through the shower arm for one minute before the showerhead is installed.
6. Apply tape or sealant to the exposed end of the shower arm. Tighten the showerhead(3) with a strap wrench.

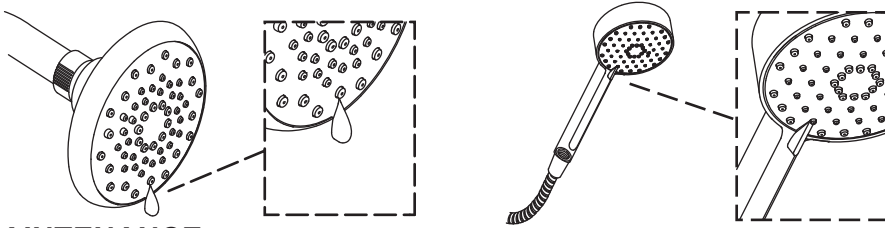


HAND SHOWER -

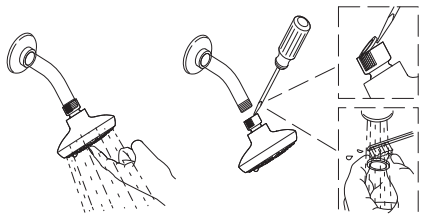
1. Filter washers(1) provided with shower hose(2) must be installed in each end of hose(2).
2. Connect shower hose to handspray(3) and the water supply.



OPERATION For multi mode showerheads & hand shower adjust the lever or rotate the sprayface to change the spray options.



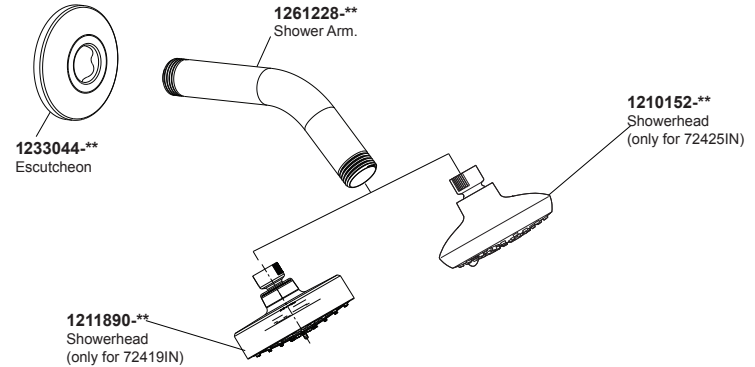
MAINTENANCE: To dislodge debris, rub the nozzles while the water is running. To improve the water flow, disconnect the shower head or handshower and clean the screen washer.



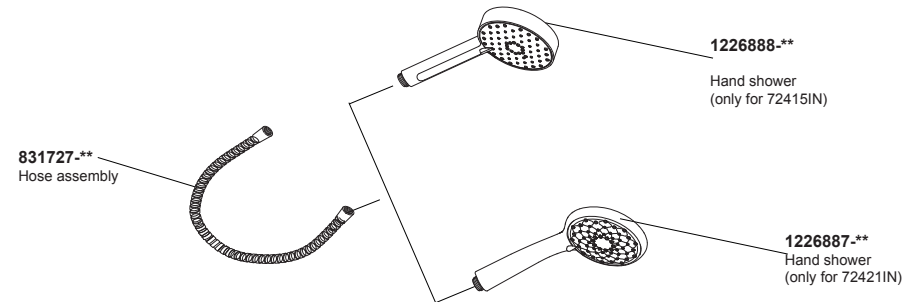
KOHLER®

SERVICE PARTS

72419IN & 72425IN SHOWERHEAD WITH ARM & ESCUTCHEON



72415IN & 72421IN HAND SHOWER WITH METAL HOSE



**Color code must be specified when ordering