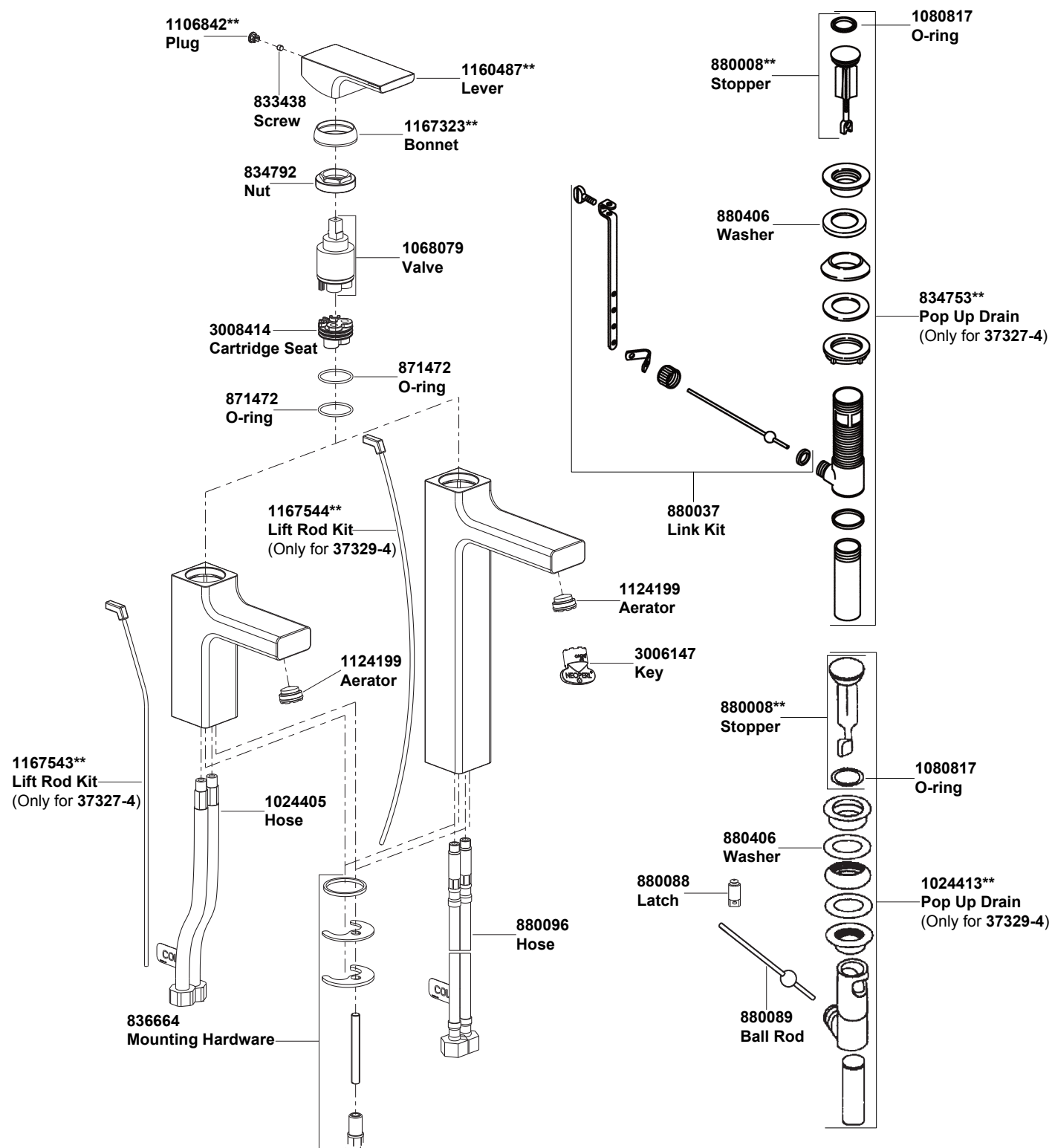


# STRAYT

## Single Hole Lav Faucet

**37327-4/4ND SINGLE HOLE LAVATORY FAUCET**  
**37329-4/4ND SINGLE HOLE TALL LAVATORY FAUCET**



**\*\*Color code must be specified when ordering**

## INSTALLATION INSTRUCTIONS

# STRAYT

## Single Hole Lav Faucet

**37327-4/4ND SINGLE HOLE LAVATORY FAUCET**  
**37329-4/4ND SINGLE HOLE TALL LAVATORY FAUCET**

## BEFORE YOU BEGIN

All information is based on the latest product information available at the time of publication. Kohler Co. reserves the right to make changes in product characteristics, packaging, or availability at any time without notice.

Please leave these instructions for the consumer. They contain important information.

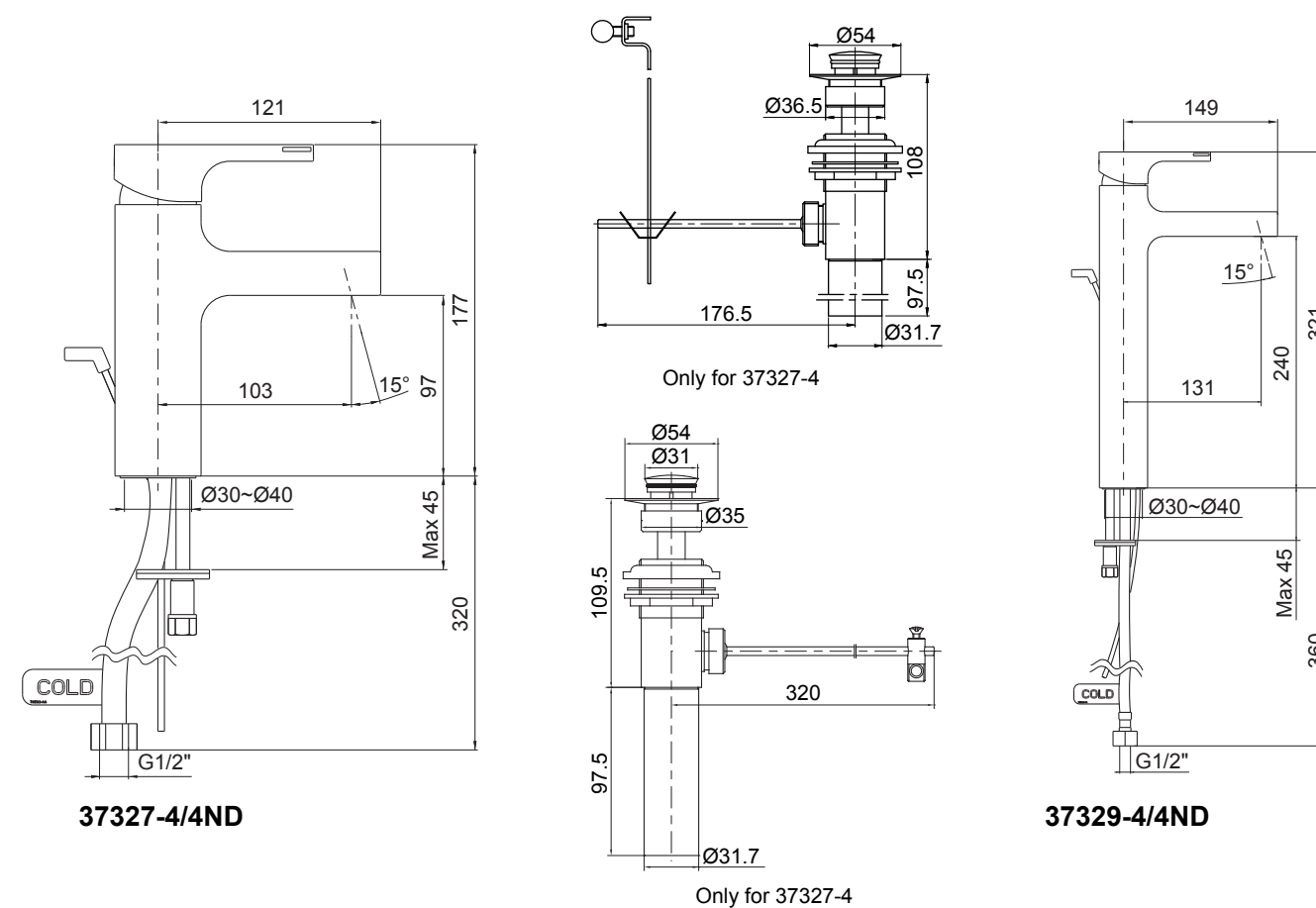
**NOTES:**

1. Flush the water supply pipes thoroughly to remove debris.
2. For new installations, assemble faucet to lavatory before installing lavatory.

## HANDLE OPERATION

Lift handle gently. Turn left for hot water, right for cold water.

## ROUGH-IN DIMENSIONS

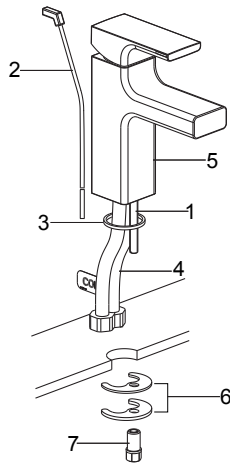


INSTALLATION

How To Install The Faucet

Screw the stud(1) to the thread hole on the bottom of faucet. Insert the lift rod(2) into the hole at the rear of the body assembly(Only for 37327-4/37329-4). Put the washer(3) into the bottom of body(5) through the flexible hoses(4) and the stud. Insert hoses and stud into the hole of lavatory. Position the faucet. From underside of the lavatory, fit the bracket(6)(Rubber washer is on the top) onto the stud. Secure the faucet by tightening nut(7).

Attach the hoses to water supplies. When facing the front of the faucet, the left hose connects to hot water, the right hose with “COLD” label connects to cold water.



How To Install The Drain  
For 37327-4

Remove the flange(8) from drain body(9). Slide the washer(10) onto the underside of the drain flange. Apply thread tape to tailpiece(11). Install to drain body. Insert drain body into underside of lavatory with drain lever hole(12) facing to the back of lavatory and thread flange onto drain body until hand tight. Tighten the locknut(13) by hand from the underside of the fixture.

Place stopper(14) into drain body aligning the flat side of stopper hole(15) with the drain lever hole.

**NOTE:** If needed, apply a ring of plumbers putty or other sealants around the underside of the drain flange(8), instead of using rubber washer(10).

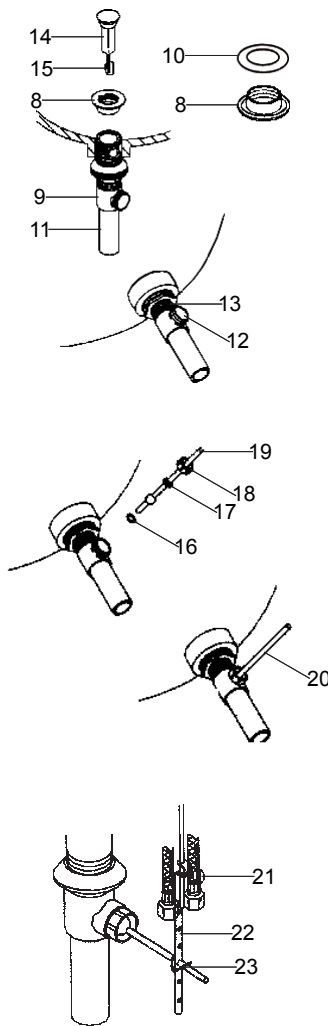
Place the rubber washer(16) into the drain lever hole. Put another plastic washer(17) and retaining nut(18) into the long end of ball lever rod(19). Insert the ball lever assembly(20) into the drain lever hole and through the stopper hole(15), and tighten the retaining nut.

Be sure that the ball lever points to the back of the lavatory. Tighten the locknut(13) onto the drain body. Remove any excess putty.

**NOTE:** Do not reposition the drain after the locknut is tightened, or you may break the putty seal.

Assemble thumb screw(21) to link(22), and link onto ball lever rod with “V”-clip(23). Slide lift rod through the hole of the link. Position the lift rod so that the length between the top of the lift rod and the mounting surface can not exceed 69mm when the drain is closed.

Push the ball lever down into the open position. Tighten thumb screw.



For 37329-4

Slide the washer(25) onto the underside of the drain flange(24). Slide the clocknut(28), washer(27) and gasket(26) (Tapered side up) onto the drain body(29). Insert the drain body into the underside of the lavatory. turn it to face rear.

**NOTE:** If needed apply a ring of plumbers putty around the underside of the drain flange(24), instead of using washer(25).

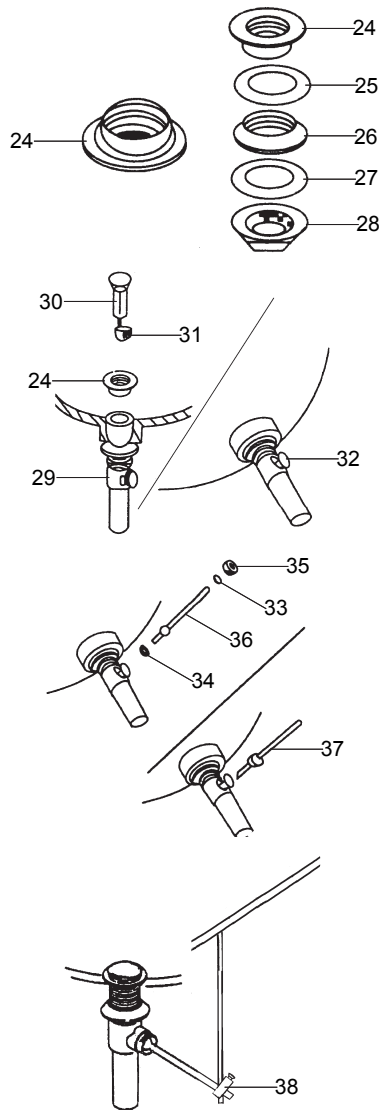
Thread the drain flange(24) onto the drain body. Tighten the locknut(28) by hand from the underside of the fixture.

Place stopper(30) into drain body aligning the flat side of stopper hole(31) with the drain lever hole(32).

**NOTE:** Do not reposition the drain after the locknut is tightened, or you may break the putty seal.

Fit the plastic washer(33), rubber washer(34), and retaining nut(35) onto the ball lever(36). Insert the ball lever assembly(37) into the drain lever hole(32) and through the stopper hole, and tighten the retaining nut(35).

Slide it through the hole in latch(38), connect the lift rod and the ball lever with latch. Push the ball lever down into the open position, adjust the lift rod knob to the right position, tighten the screw of the latch to fixup the lift rod.

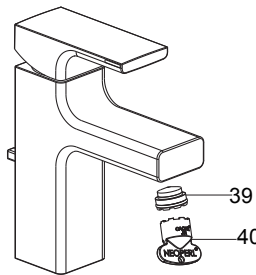


INSTALLATION CHECKOUT

Ensure that all connections are tightened and the handle is in the off position.

Open the drain. Turn on main water supply and check for leaks. Repair as required.

Remove the aerator(39) with the key(40). Turn the faucet handle on. Run hot and cold water through the spout for about one minute to remove any debris. Remove debris from the aerator. Shut off the faucet and reinstall the aerator.



CLEANING INSTRUCTIONS

All Finishes: Clean the finish with mild soap and warm water. Wipe entire surface completely dry with clean soft cloth. Many cleaners may contain chemicals, such as ammonia, chlorine, toilet cleaner etc. which could adversely affect the finish and are not recommended for cleaning.

Do not use abrasive cleaners or solvents on Kohler faucets and fittings.