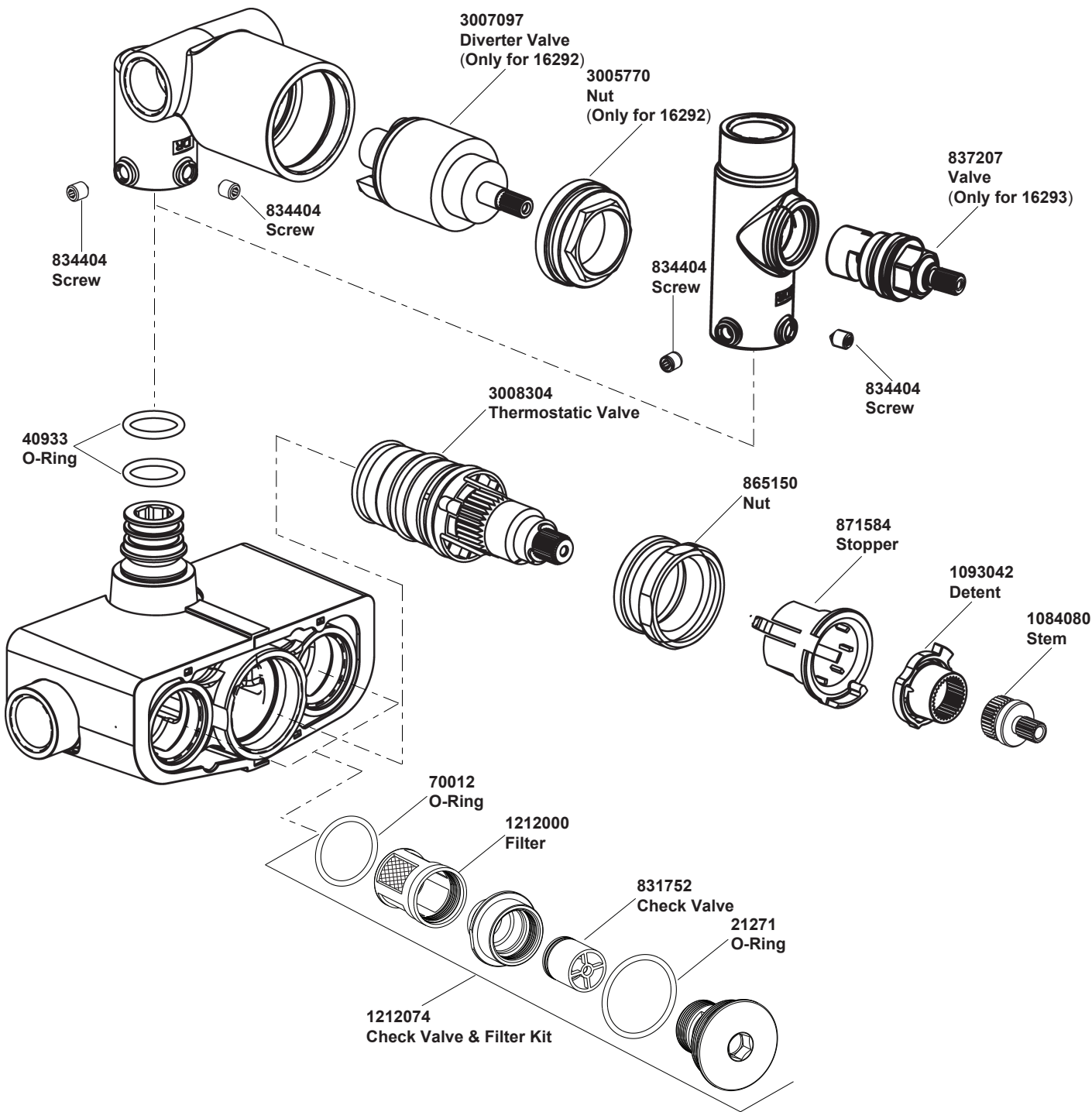


- 16292
- RECESSED THERMOSTATIC VALVE SYSTEM WITH DIVERTER
- 16293
- RECESSED THERMOSTATIC VALVE SYSTEM



\*\*Color code must be specified when ordering

- 16292
- RECESSED THERMOSTATIC VALVE SYSTEM WITH DIVERTER
- 16293
- RECESSED THERMOSTATIC VALVE SYSTEM

BEFORE YOU BEGIN

All information is based on the latest product information available at the time of publication. Kohler Co. reserves the right to make changes in product characteristics, packaging, or availability at any time without notice.

Please leave these instructions for the consumer. They contain important information.

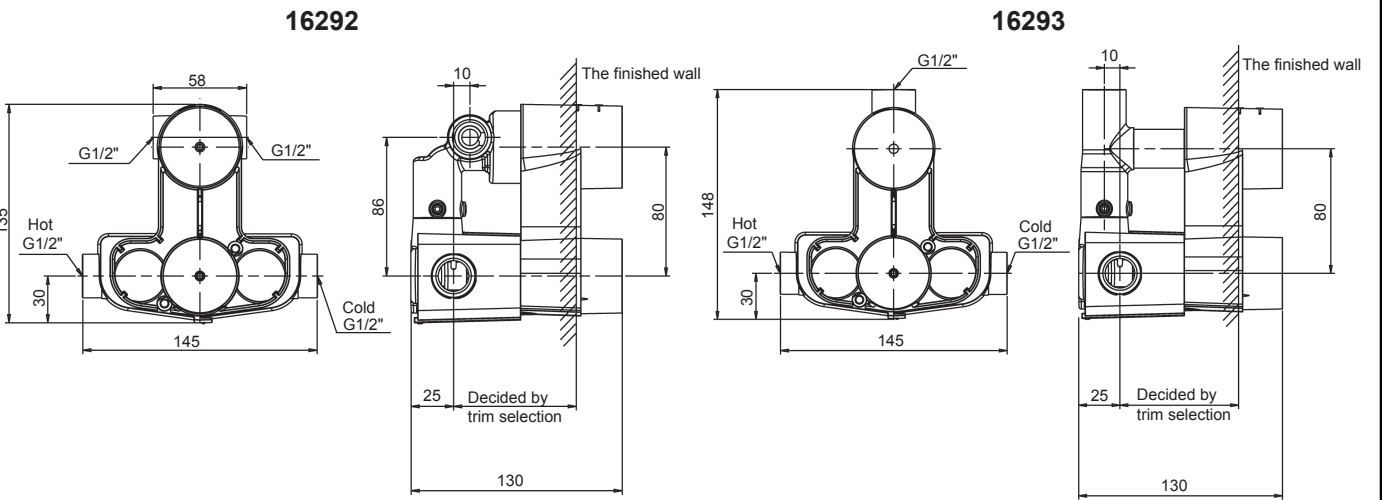
Notes:

1. The dimensions from the finished wall to the centerline of the valve decided by the trim selection.
2. Do not remove the plastic guard from the valve body until instructed to.
3. Check for leaks before covering the pipes, repair as needed.
4. Please ensure only apply water pressure test on the product, and empty the air in pipe and faucet thoroughly before the test. Please ensure test pressure below 0.8MPa(8bar) and test duration within 30 minutes.

HANDLE OPERATION

1. Minimum supply pressures: 0.5bar.
2. Recommended supply pressures: 3bar on hot and cold water.
3. If supply pressure higher than 5bar: install a pressure reducer.
4. Pressure difference between hot and cold supply: 2bar maximum.
5. Hot supply water temperatures, minimum: 50°C, maximum: 70°C.
6. Recommended hot supply water temperature: 60°C (energy-saving).
7. Setting range, approximately: 20°C to 50°C.
8. Safety stop at: 40°C.

ROUGH-IN DIMENSIONS



# INSTALLATION

## How To Install The Valve

Flush the water supply pipes thoroughly to remove debris before installation. Shut off the main water supply.

Determine where the valve body(1) will be located on the wall. Be sure the bulge on the valve body upwards. Red mark is on the left, blue one is on the right.

As Fig.1 shown. The min. and max. dimensions from the centerline of inlet on the valve body to the surface of the finished wall are decided by trim selection. The size of opening on the wall should be within the min. and max. outlines.

**Note:** Ensure the centerline of valve is perpendicular to the wall.

Connect G1/2" hot and cold supplies, shower and bath pipes to valve body as Fig.2 shown. Connect hot supply to the end on the left. For 16293T, the bath spout pipe is unnecessary.

Supply enough tape or sealant to all connections.

Install temporary nipples for shower and bath outlets. During installation, keep valve guard(2) on valve body.

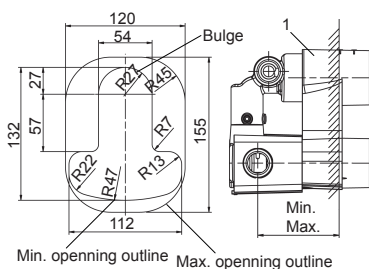


Fig.1

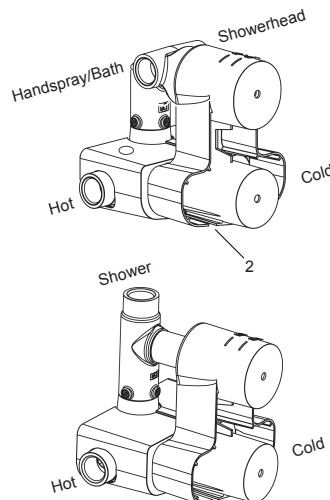


Fig.2

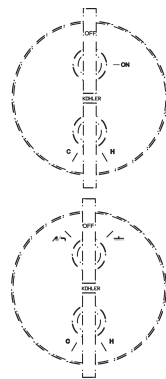
## INSTALLATION CHECKOUT

Ensure that all coupling nuts are tightened and the valve system is in the close position. Turn on the cold and hot water supplies and check for leaks. Repair as needed.

## OPERATION INSTRUCTIONS

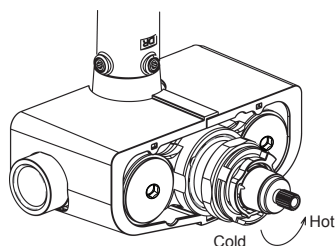
The temperature is set by slowly turning the temperature handle at underside (Note: the trim is purchased separately). For safety reasons, there is a stop that limits temperature to 40°C. To get a higher temperature, continue turning the temperature handle.

Water flow is set by turning the top flow handle. For lever handle, when handle aligns with the "OFF" mark on faceplate, water flow is blocked. For cross handle, when the round mark on handle aligns with the "OFF" mark on faceplate, water flow is blocked. For shower valve system, turn the handle clockwise to shower flow. For bath & shower valve system, turn handle counter-clockwise or clockwise to diverter between shower and bath/handspray.



## Temperature Verification and Setting

Make sure that the water feeds of the faucet have reached their highest temperature but within the recommended range by letting the water run sufficiently. With the selector in position 37°C, the temperature of the water coming out of the faucet must be within a range of 36°C and 38°C, as measured by a thermometer. If the temperature out of the range, the installer can adjust the setting. Proceed with the setting as follows:



Remove the temperature handle kit(accoding to trim installation instruction.)

With the faucet on "cold" normal water flow, slowly turn the temperature selector (always in the same direction) until water at 37°C is obtained. If the temperature goes over 38°C, go back to the "cold" setting and set again.

When the temperature is stabilized, without turning the cartridge spindle, reinstall the handle kit.

## CARE AND MAINTENANCE

### Clean Thermostatic Cartridge

Very hard water can obstruct the filters on thermostatic cartridge and reduce the flow of water. Please clean the cartridge as follows:

Shut off the water supplies of the faucet and open the flow valve, then proceed to remove the cartridge. The cartridge is sense part, please be careful.

Make sure the handle(round mark of cross handle) aligned with the number 37 on faceplate before your action. Remove the temperature handle kit(Detailed in trim installation instruction). Remove stem, detent and stop assembly(Fig.3). Removing the thermostatic cartridge cautiously(15). Clean the thermostatic cartridge by soaking it in warm vinegar.

After cleaning, install the "stop assembly" back on the cartridge, adjusting the stop pin into the notch(Fig.4). Install the cartridge and stop assembly into the body, adjusting the stop pin into the notch(Fig.5). Reinstall the detent and stem. Align the round mark on the detent to the arc bulge on the stop assembly (Fig.6). Reinstall the temperature handle kit(Detailed in trim installation instruction).

**NOTE:** Do not turn the cartridge when reinstall it. If you turned it without carefulness, you should adjust it and be sure that the black line mark is correctly in line with the groove(Fig.7). For accurate temperature, it is supposed to verify and resetting the cartridge according to instruction in previous pages.

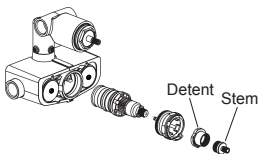


Fig.3

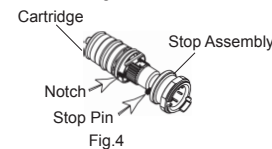


Fig.4

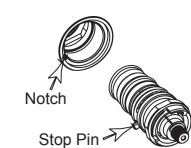


Fig.5

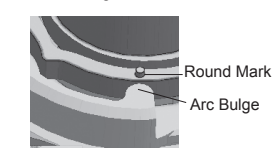


Fig.6

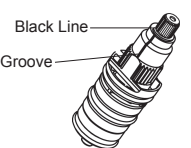


Fig.7

### Clean Filters for Check Valve and Filter Kits

The faucet is equipped with high quality filters. If there is a lot of debris in the supply pipes or the quality of water is bad, it will cause the flow in bad condition. Please clean the filters as following steps:

- 1) Turn counterclockwise with the hex wrench(3) to uninstall the check valve and filter kits;
- 2) Flush the filter(4);
- 3) Check the filter whether is intact, if damaged replace it, inspect the check valve(5) for debris and clean it as necessary;
- 4) Assemble the check valve and filter kits. Make sure the connection is tightened and hand tight if needed.
- 5) Tighten the check valve and filter kits clockwise with the hex wrench to the valve;

**Note:** Make sure that all the parts could not be lost.

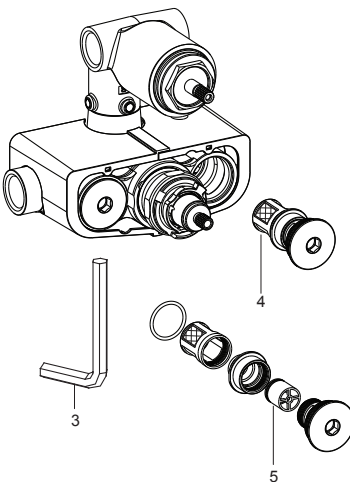


Fig.8

## CLEANING INSTRUCTIONS

All Finishes: Clean the finish with mild soap and warm water. Wipe entire surface completely dry with clean soft cloth. Many cleaners may contain chemicals, such as ammonia, chlorine, toilet cleaner etc. which could adversely affect the finish and are not recommended for cleaning.

Do not use abrasive cleaners or solvents on Kohler faucets and fittings.