

32323T-4 家用感应厨房龙头

安装之前

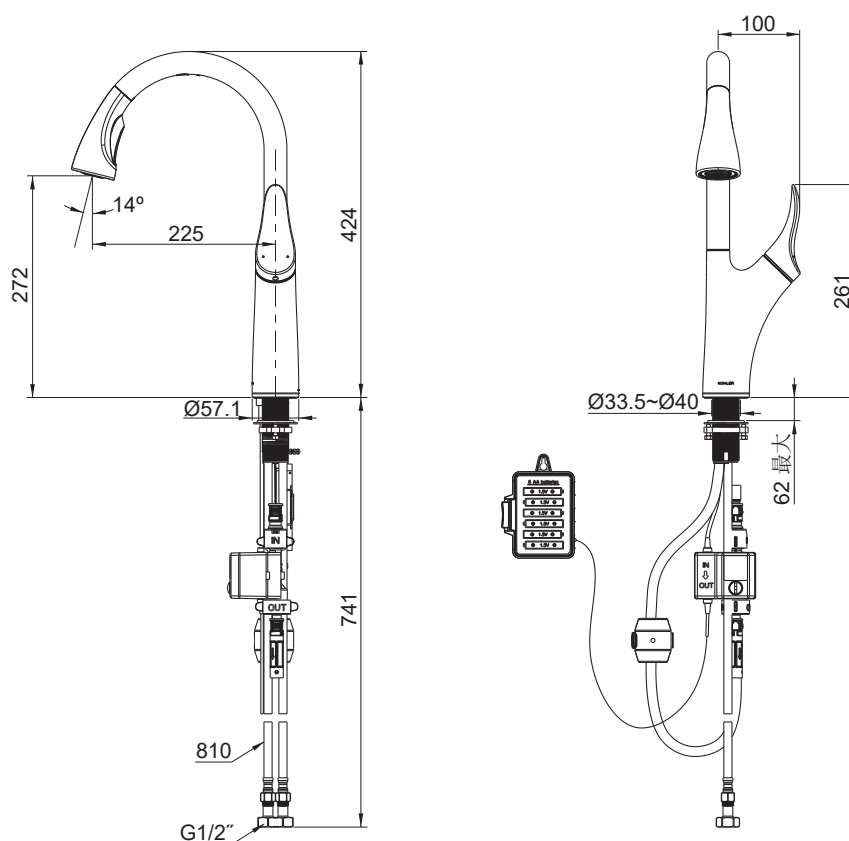
所有的资料是按最新出版的产品资料编写而成。科勒公司保留任何时候不经通知即可改变产品特性、包装或产品可供类型的权利。

说明书包括重要的安装、保养及清洁方面的内容，请把这些资料交给用户阅读。

注意事项：

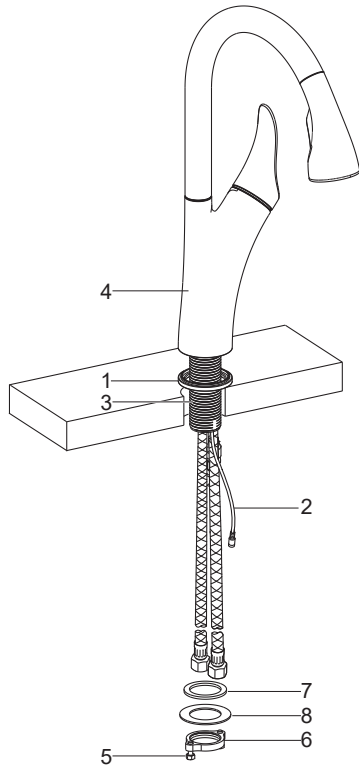
1. 一定要先彻底冲洗供水管以清除管道中的杂质。
2. 如果是安装新的洗涤盆，可将水龙头先装到洗涤盆上。
3. 花洒最高工作压力：0.5MPa(5bar)。水压超过0.5MPa(5bar)时必须安装减压阀。花洒最高工作温度及环境温度：60°C。请特别注意花洒同花洒连接的臂管须远离加热器，否则可能损坏花洒及其密封件，甚至对使用者造成伤害。
4. **人身损害或财产损失风险。** 开始安装前，请从头到尾阅读产品说明。
5. **财产损失风险。** 水龙头出水口里有一块磁铁。切勿让易受电磁损坏的物品靠近出水口。
6. 严格遵守一切管道铺设、电气和建筑规范。
7. **淡水污染风险。** 这个水龙头有反虹吸保护装置。切勿拆下任何内部部件。
8. **产品损坏风险。** 本产品含有敏感的电子元件。切勿将打开的化学或清洁产品容器存放在本产品附近。
9. 安装电池盒时，确保重锤不干涉电子阀或电线连接。
10. 留出足够的维修空间：
 - ①安装水龙头之前，确保水槽下面的橱柜区域能够容纳所有需要的组件。
 - ②考虑后续步骤中涉及到的连接，确保电池盒位置留有足够的空间便于花洒软管和重锤的操作使用。

安装尺寸



安装步骤

如何安装水龙头



□将底座(1, 有泡沫的面朝下)穿过软管、电线(2)和牙管(3)置于水龙头(4)底部。

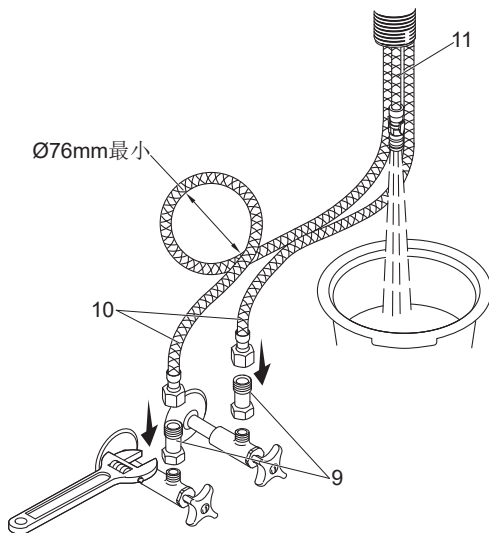
□从厨盆上方将水龙头组件插入台面安装孔中, 使底座底部接触台面, 且把手置于右边。

□确保螺钉(5)部分旋入安装环(6)螺钉孔。

□从厨盆下方依次分别滑动橡胶垫片(7)、垫片(8)和安装环(6)到软管、电线(2)和牙管(3)上, 旋紧安装环直至垫片紧贴厨盆底部, 确保水龙头位置正确。

□拧紧螺钉(5)以固定水龙头。

如何连接软管

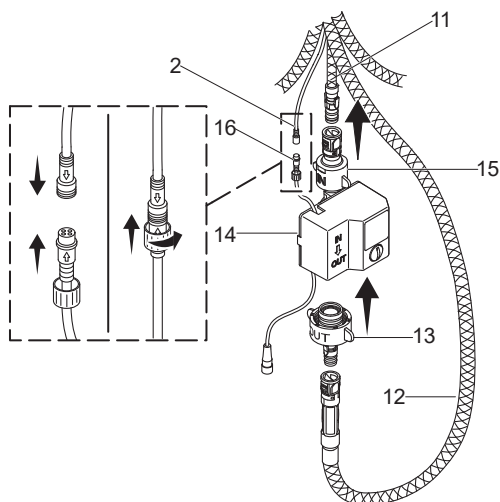


□将单向阀接头(9)拧紧到供水阀上, 接着将供水软管(10)连接到单向阀接头上, 贴有“COLD”标签的软管接冷水, 另一根软管连接热水。

□打开冷热水源及龙头把手, 让水流出约一分钟以清除管道中的杂质。关上把手及冷热水源。

注意: 安装过程中, 供水软管不得绷紧、打结或缠绕。如不得不盘绕, 则保持不小于Ø76mm的内径。

如何安装电子阀



重要! 限流风险。 安装过程中, 花洒软管(12)不得绷紧或打结。

□用手将出水快接(13)拧紧到电子阀(14)上。

□安装花洒软管(12)到出水快接(13)上, 直至听到“咔嗒”声。

□安装进水快接(15)到出水软管(11)上, 直至听到“咔嗒”声。

□对齐电线(2)和电线(16)接头上的箭头, 连接电线(2)和电线(16)。旋紧螺母, 确保连接牢固。

如何安装电池盒

注意：选择安装位置前，确认在所选位置上电池盒电线(17)连接得到电子阀上的电源线(18)。

□根据实际情况，选择其中一种安装方式。

方式一：螺钉和胀塞

①在墙上选一合适位置，根据胀塞(19)直径打孔。

②将胀塞塞入安装孔中，再将螺钉(20)旋入胀塞。

方式二：3M双面胶和挂钩(仅适用于平整光滑墙面)

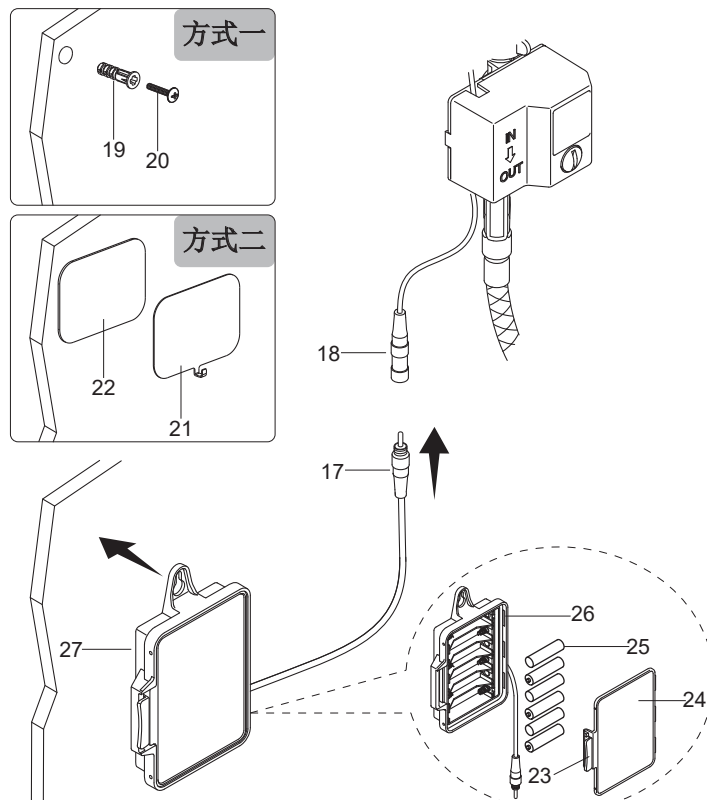
①清洁挂钩(21)背面及墙面被贴位置，去除油污、水渍以及灰尘等；

②待表面干燥后，撕开3M双面胶(22)一面的离型纸，贴于挂钩背面，贴合后均匀按压一会；

③撕开双面胶另一面离型纸，确保挂钩方向及水平位置后，将挂钩粘贴在墙面上，按压使其牢固贴合。

□按下弹片(23)打开电池盖(24)。将六节5号电池(25)装入电池座(26)，将电池盖装回。

□将电池盒(27)挂到螺钉(20)或挂钩(21)上，连接电池盒电线(17)与电子阀上的电源线(18)。

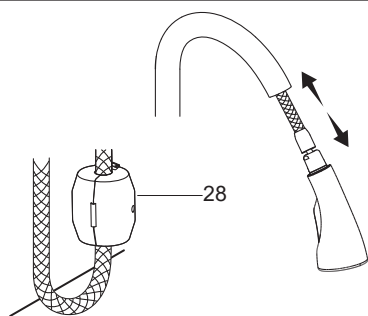


如何安装重锤

注意：确保重锤(28)不干涉电子阀或电线连接。

□将重锤调整到合适位置，扣紧卡扣。

□测试抽拉效果，检查是否抽拉顺畅。



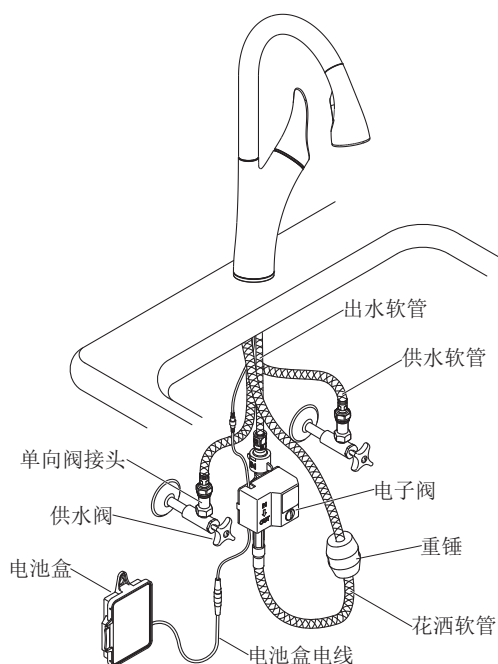
安装结果检查

□检查并确保所有衔接处都已拧紧。

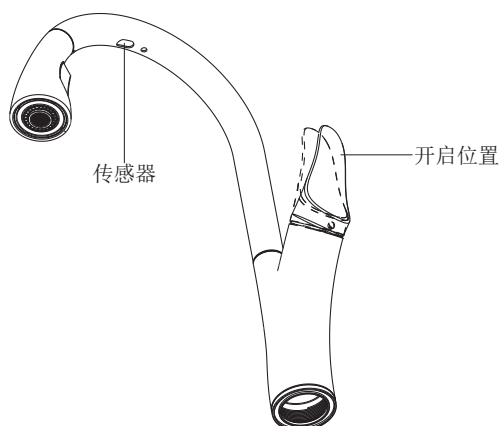
□确保把手在关闭位置。

□打开主水源和排水系统。

□检查并修理有漏水的接口。



使用说明



龙头操作

- 向外旋转把手至打开位置，如电子阀已开启，则龙头自动出水；如电子阀未开启，则龙头不出水，需挥感应开启电子阀。持续4分钟不操作后，龙头出水自动关闭，需重新挥感应开启龙头出水。
- 调节把手至所需水温。
- 伸手在出水口下方再次挥动以关闭出水。

注意：

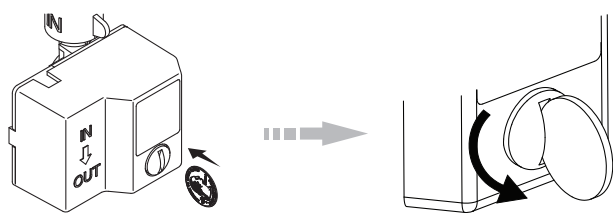
- 长时间不使用时，应将把手旋转回关闭(直立)位置。
- 传感器需远离蒸汽。

LED灯指示说明

- 当电池电量不足时，传感器上的LED灯将红色闪烁持续15天。

特征

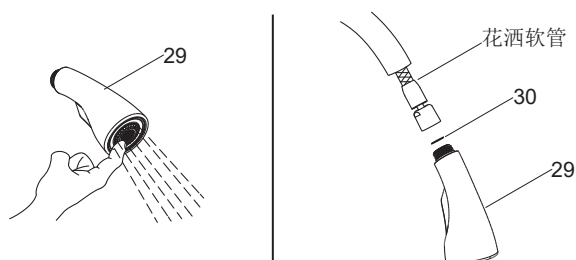
- 自动关闭：闲置4分钟后，会自动关闭出水。



手动操作

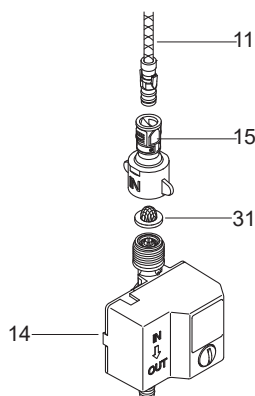
- 在断电的情况下，感应功能将失效。用硬币逆时针转动电子阀上的黑色硬币口到底，开启手动操作功能。
- 一旦打开手动操作功能，龙头仅能通过手动控制。

维护与保养



如何清洗花洒头滤网垫片

- 打开龙头，揉搓花洒头(29)喷嘴以清除杂质。
- 当有杂质使水流变小时，关闭龙头，取下花洒头(29)，取出里面的滤网垫片(30)并清洗。清洗后重新装回即可。

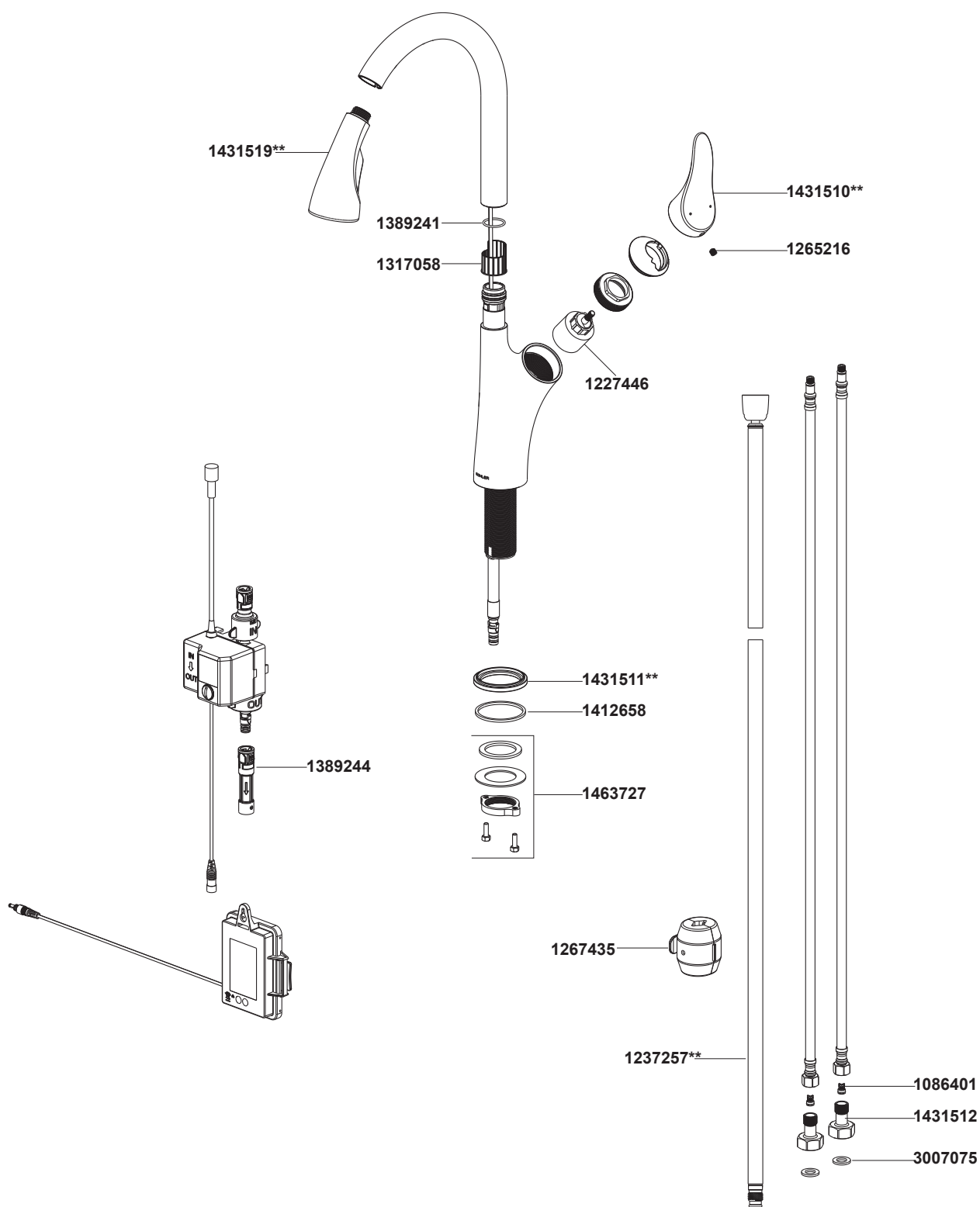


如何清洗电子阀进水滤网

- 关闭龙头。
- 断开进水快接(15)与出水软管(11)的连接。
- 从电子阀(14)上拆下进水快接。
- 从进水快接内部取出并清洗进水滤网(31)。
- 将进水滤网装回进水快接里。用进水快接重新连接电子阀和出水软管。

故障检修		
警告：产品损坏风险。 本产品含有敏感的电子元件。在故障排除过程中，小心不要损坏销子和接头。		
龙头故障检修表		
故障现象	可能的原因	推荐解决方式
1. 产品不出水。	A. 供水阀关闭。 B. 龙头把手处于关闭位置。 C. 冷和/或热供水软管缠绕打结。 D. 电池电量不足或耗尽。 E. 花洒头或电子阀滤网堵塞。	A. 打开供水阀。 B. 转动把手至打开位置。参考“使用说明”。 C. 确认供水软管没有缠绕打结。如盘绕，则保持不小于Ø76mm的内径。 D. 检查传感器上的LED灯是否红色闪烁。如果出现闪烁，参考电子阀说明书1431520-2更换电池。 E. 参考“维护与保养”。
2. 出水量小。	A. 供水阀部分关闭。 B. 龙头把手部分关闭。 C. 冷和/或热供水软管缠绕打结。 D. 一个或多个滤网堵塞。 E. 隔膜片破裂。	A. 确认供水阀完全打开。 B. 转动把手至完全打开位置。 C. 确认供水软管没有缠绕打结。如盘绕，则保持不小于Ø76mm的内径。 D. 参考“维护与保养”。 E. 更换电子阀组件。
3. 出水效果差。	A. 喷嘴堵塞。	A. 打开龙头，用手指揉搓喷嘴以清除杂质。
4. 水龙头不使用时滴水或滴漏。	A. 手动操作功能部分接入。	A. 用硬币逆时针转动电子阀上的黑色硬币口直至拧不动，然后顺时针转动直至滴漏停止。
清洗说明		
<p>适用于所有加工处理过的表面：以中性肥皂水清洗镀层表面，再以干净软布彻底擦干整个表面，许多清洁剂，比如氨水、去污粉及洁厕灵等，会对电镀表面造成伤害，切忌使用。</p> <p>有磨损性的清洁用具或清洁剂也不可适用于科勒牌的水龙头及其配件上。</p>		
龙头本体背面标有“LEAD FREE”字样，即产品符合美国AB1953法令的要求。		

32323T-4 家用感应厨房龙头



**订购时请说明颜色编号

32323T-4 Pull-down Kitchen Faucet

BEFORE YOU BEGIN

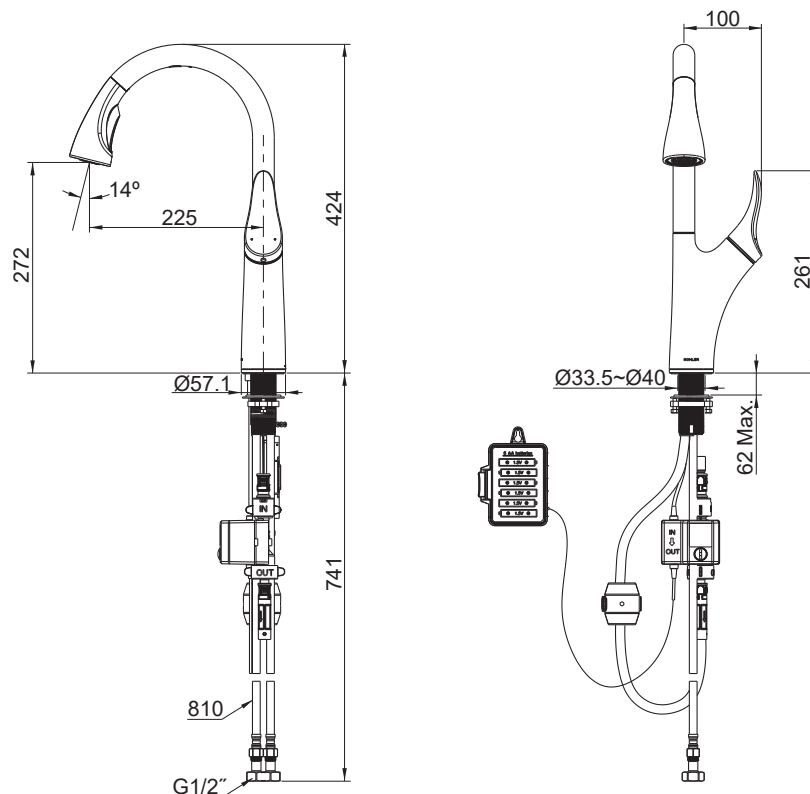
All information is based on the latest product information available at the time of publication. Kohler Co. reserves the right to make changes in product characteristics, packaging, or availability at any time without notice.

Please leave these instructions for the consumer. They contain important information.

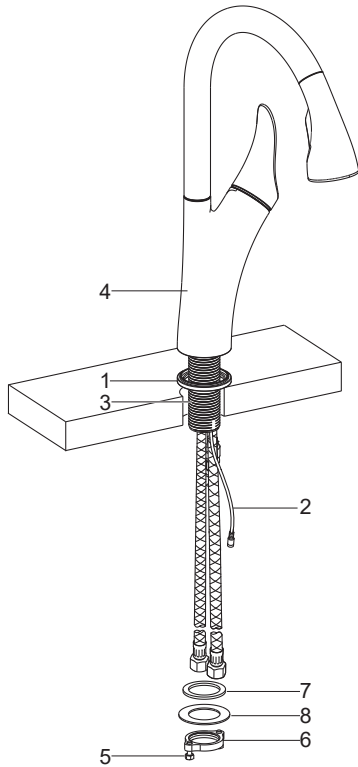
NOTE:

1. Flush the water supply pipes thoroughly to remove debris.
2. For new installations, install the faucet to sink before installing.
3. The highest working pressure for sprayhead is 0.5MPa(5bar). If it exceeds 0.5MPa(5bar), a pressure reducer is needed. The highest water and environment temperature is 60°C. Please keep sprayhead away from heater, or it may become damaged and cause injury to the user.
4. **Risk of injury or property damage.** Please read all instructions thoroughly before beginning installation.
5. **Risk of property damage.** The faucet spout contains a magnet. Do not allow items susceptible to electromagnetic damage to come into close proximity to the spout.
6. Follow all plumbing, electrical, and building codes.
7. **Risk of fresh water contamination.** This faucet contains back-siphonage protection. Do not remove any internal components.
8. **Risk of product damage.** This product contains sensitive electronic components. Do not store open containers of chemical or cleaning products near this product.
9. When locating the battery box, make sure the spray hose weight will not interfere with the valve box or wire connections.
10. Allow adequate clearance for servicing.
 - 1) Before installing the faucet make sure the cabinet area under the sink can accommodate all of the required components.
 - 2) Consider loose fitting the connections covered in the following steps to make sure that the battery box location allows enough clearance for the operational use of the spray hose and weight.

ROUGH-IN DIMENSIONS



INSTALLATION



How to Install the Faucet

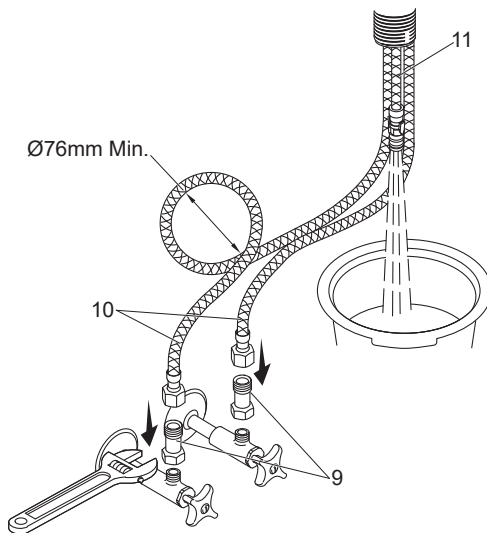
□ Slide the base(1, foam side down) over the hoses, wire(2) and shank(4) until it contacts the faucet bottom.

□ Insert the faucet assembly into the mounting hole from upside of the sink with the handle on the right.

□ Partially thread the screws(5) into the screw holes of the threaded ring(6).

□ From underside of the sink, slide the rubber washer(7), washer(8) and threaded ring(6) over the hoses, wire(2) and shank(3). Thread the threaded ring onto the shank until the washers contact the underside of the sink. Make sure the faucet is positioned correctly.

□ Tighten the screws(5).

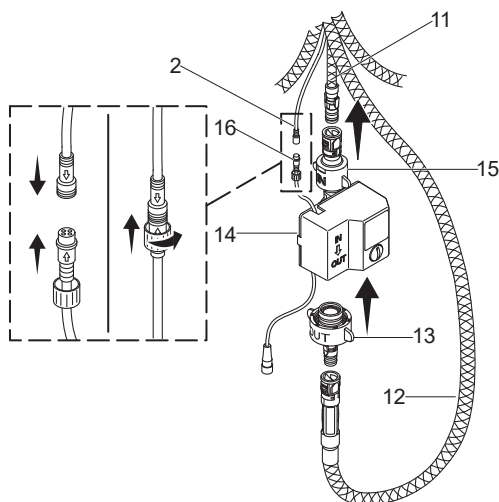


How to Connect the Hoses

□ Connect and tighten the check valve housings(9) to water supplies. Connect and tighten the supply hoses (10) to the check valve housings. The supply hose with "COLD" label should be connected to cold water. Another hose should be connected to hot water.

□ Open hot and cold water supplies. Turn on the faucet. Flush hot and cold water for about one minute to remove any debris. Shut off the faucet and water supplies.

NOTE: Supply hoses must not be taut, kinked, or twisted during installation. If the supply hoses must be coiled, maintain an inside diameter of minimum Ø76mm.



How to Install the Valve Box

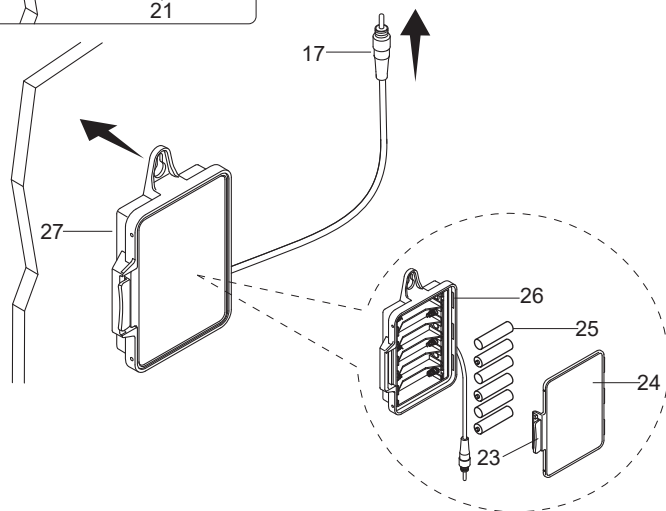
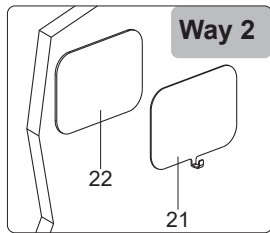
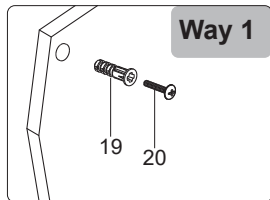
IMPORTANT! Risk of restricted waterflow. The spray hose(12) must not be taut or kinked when installed.

□ Handtighten the valve box outlet fitting(13) onto the valve box(14).

□ Push the spray hose(12) connector onto the valve box outlet fitting until a click is heard.

□ Push the valve box inlet fitting(15) onto the outlet hose (11) until a click is heard.

□ Connect the sensor wire(2) to the wire(16) on the valve box. Align the arrows on both connectors and push together. Tighten the nut to secure the connection.



How to Install the Battery Box

NOTE: Before selecting a location for the battery box, verify that the battery box wire(17) will reach the power wire(18) on the valve box.

☐ According to the actual conditions, select one of the installation ways as follows.

Way 1: Screw and anchor

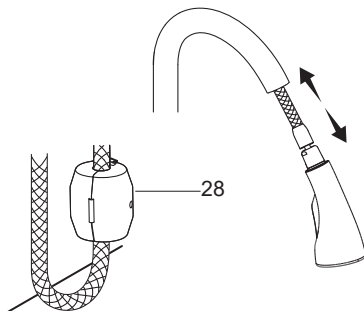
- 1) Select a suitable location on the wall and drill a hole as the anchor(19) diameter.
- 2) Press the anchor into the hole, and then screw the screw(20) into the anchor.

Way 2: 3M double sided tape and hook (Only apply for flat and smooth walls.)

- 1) Clean the hook(21) backside and installed location of the wall. Be sure to remove oil, water and dust.
- 2) After the surface is dry, tear off one paper of the 3M double sided tape(22), stick it on the hook backside, and press it evenly for a while after bonding.
- 3) Tear off another paper of the 3M double sided tape. Ensure the hook is horizontal and in the right place, and then paste it onto the wall and press it firmly.

☐ Press the tab(23) on the battery cover(24) to remove. Insert six AA batteries(25) into the battery holder(26). Reinstall the battery cover on the battery holder.

☐ Hang the battery box(27) on the screw(20) or hook(21). Connect the battery box wire(17) to the power wire(18) on the valve box.



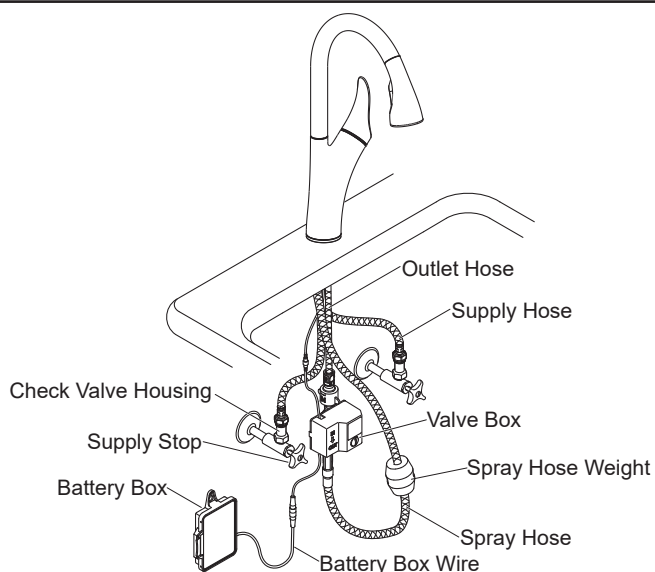
How to Install the Spray Hose Weight

NOTE: Make sure the spray hose weight(28) will not interfere with the valve box or wire connections.

☐ Adjust the weight to the appropriate position and squeeze to connect the clasp.

☐ Extend and retract the spray hose to check for smooth operation.

INSTALLATION CHECKOUT



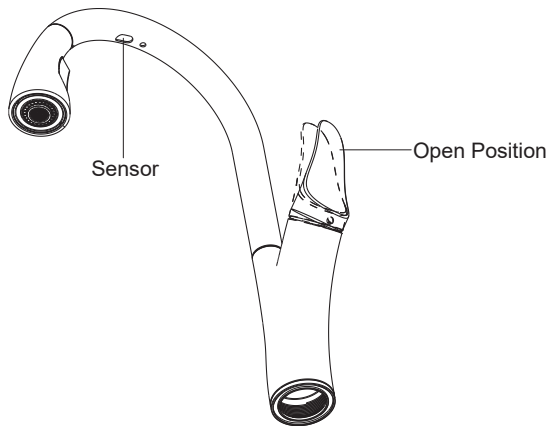
☐ Ensure that all connections are tight.

☐ Ensure that the handle is in the off position.

☐ Turn on the main water supplies and drain.

☐ Check all connections for leaks. Repair as needed.

OPERATION INSTRUCTION



Faucet Operation

- ☐ Rotate the handle outward to the open position. If the valve is turned on, it will start water flow automatically. If the valve is not turned on, it will not start water flow, wave your hand under the spout to turn on the valve. After 4 minutes of inactivity, the water will automatically shut OFF, wave your hand under the spout again to turn the water ON.
- ☐ Adjust the handle to the desired water temperature.
- ☐ Wave your hand under the spout again to turn the water OFF.

NOTE:

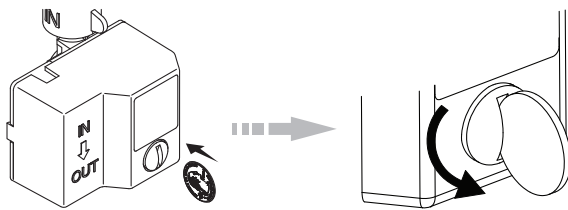
- ☐ For extended periods of nonuse, the handle should be returned to the closed (upright) position.
- ☐ Keep the sensor away from the steam.

LED Indicator

- ☐ When the batteries are low, the red LED on the sensor will flash for 15 days.

Features

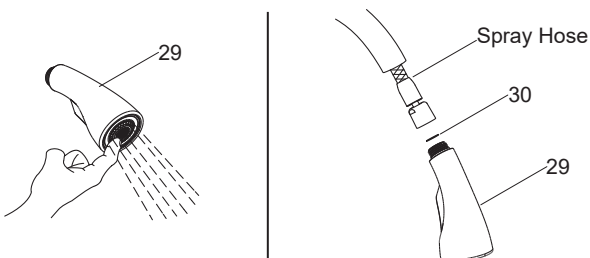
- ☐ Automatic shut-off: After 4 minutes of inactivity, the water will automatically shut OFF.



Manual Sensor Override

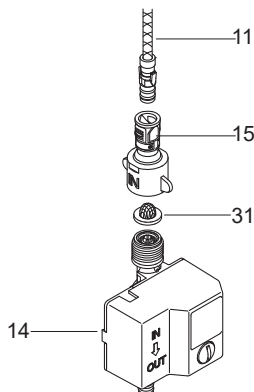
- ☐ In case of power loss, the sensor function can be bypassed by engaging the manual override feature on the valve box. Use a coin to turn full counter-clockwise to engage manual override and operate the faucet manually.
- ☐ Once the manual override is engaged, the faucet can then be operated manually only.

CARE AND MAINTENANCE



How to Clean the Sprayhead Screen

- ☐ With the water running, rub the sprayhead(29) nozzles to dislodge debris.
- ☐ To improve the water flow, turn off the faucet. Disconnect the sprayhead(29) from the nut at the end of the spray hose. Remove and clean the screen(30) inside the sprayhead. Reinsert the screen and reconnect the sprayhead.



How to Clean the Inlet Screen of the Valve Box

- ☐ Turn the handle to the closed position.
- ☐ Disconnect the inlet fitting(15) from the outlet hose(11).
- ☐ Unscrew the inlet fitting from the valve box(14).
- ☐ Remove and clean the inlet screen(31) inside the inlet fitting.
- ☐ Reinstall the inlet screen into the inlet fitting. Reconnect the valve box and outlet hose with the inlet fitting.

TROUBLESHOOTING

CAUTION: Risk of product damage. This product contains sensitive electronic components. Use care not to damage pins and connectors during troubleshooting.

Faucet Troubleshooting Table

Symptoms	Probable Causes	Recommended Actions
1. No water flow.	<p>A. The supply stops are closed.</p> <p>B. Handle is in the closed position.</p> <p>C. The hot and/or cold supply hose is kinked.</p> <p>D. Battery power is low or exhausted.</p> <p>E. Clogged sprayhead or valve box screen.</p>	<p>A. Confirm the supply stops are open.</p> <p>B. Rotate the handle to the open position. Refer to the "Operation Instruction" section.</p> <p>C. Confirm the supply hoses are not kinked. If coiled, maintain an inside diameter of minimum Ø76mm.</p> <p>D. Check for a red flashing LED on the sensor. If it flashes red, refer to valve box installation instruction 1431520-2 for batteries replacement.</p> <p>E. Refer to the "Care and maintenance" section.</p>
2. Low water flow.	<p>A. The supply stops are partially closed.</p> <p>B. Handle is partially closed.</p> <p>C. The hot and/or cold supply hose is kinked or twisted.</p> <p>D. One or more screens are clogged.</p> <p>E. Cracked diaphragm.</p>	<p>A. Confirm the supply stops are fully open.</p> <p>B. Rotate the handle to the full open position.</p> <p>C. Confirm the supply hoses are not kinked or twisted. If coiled, maintain an inside diameter of minimum Ø76mm.</p> <p>D. Refer to the "Care and maintenance" section.</p> <p>E. Replace the valve box assembly.</p>
3. Poor spray pattern.	<p>A. The spray nozzles are clogged.</p>	<p>A. Rub your finger over the nozzles with water running to dislodge debris.</p>
4. Water drip or trickle when faucet is not in use.	<p>A. Manual override is partially engaged.</p>	<p>A. Turn the manual override counter-clockwise as far as possible. Then turn the manual override clockwise until the water stops dripping.</p>

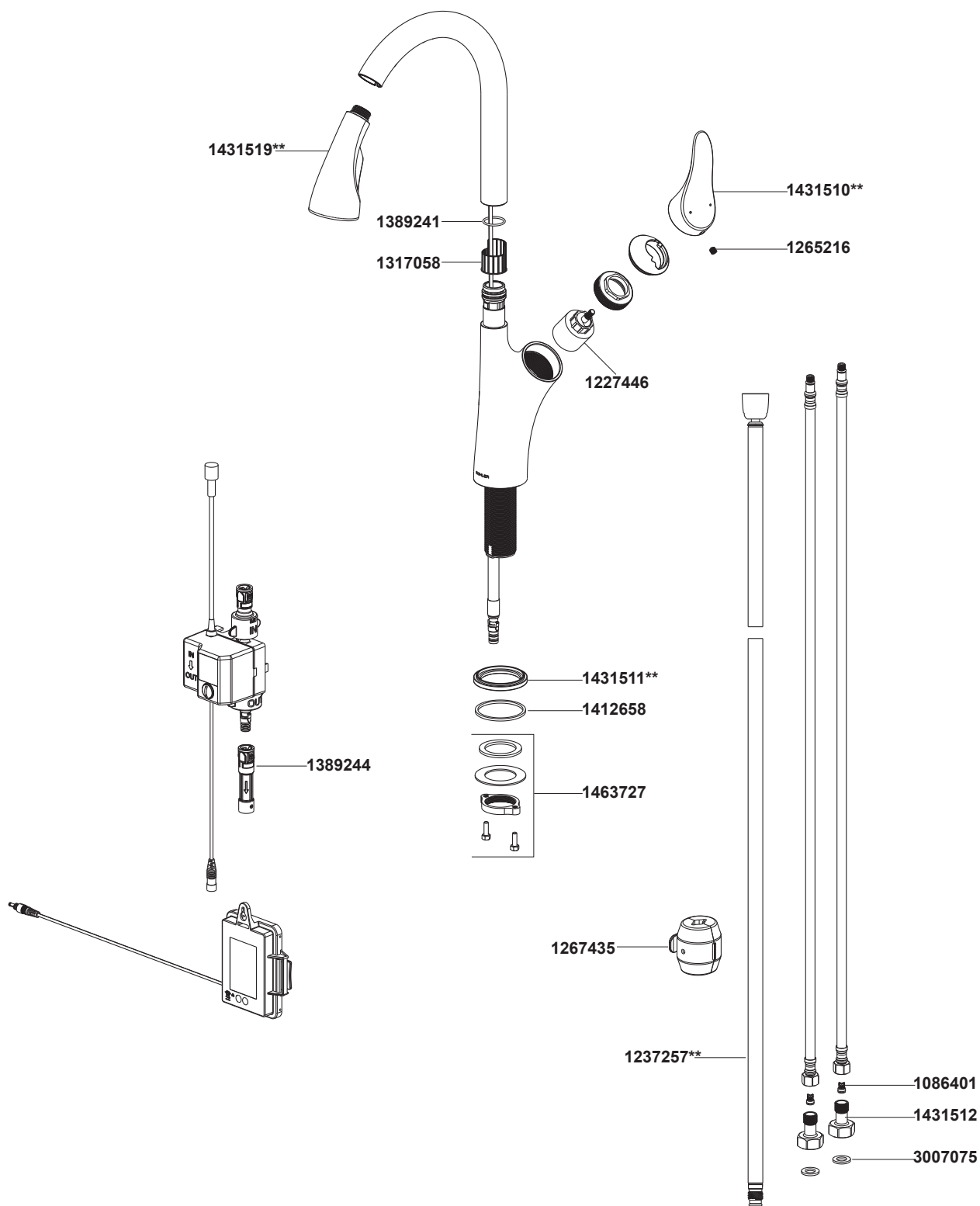
CLEANING INSTRUCTIONS

All Finishes: Clean the finish with mild soap and warm water. Wipe entire surface completely dry with clean soft cloth. Many cleaners may contain chemicals, such as ammonia, chlorine, toilet cleaner etc. which could adversely affect the finish and are not recommended for cleaning.

Do not use abrasive cleaners or solvents on Kohler faucets and fittings.

"LEAD FREE" is marked on the back of the faucet signifying its compliance with the United States AB1953

32323T-4 Pull-down Kitchen Faucet



**Color code must be specified when ordering.