

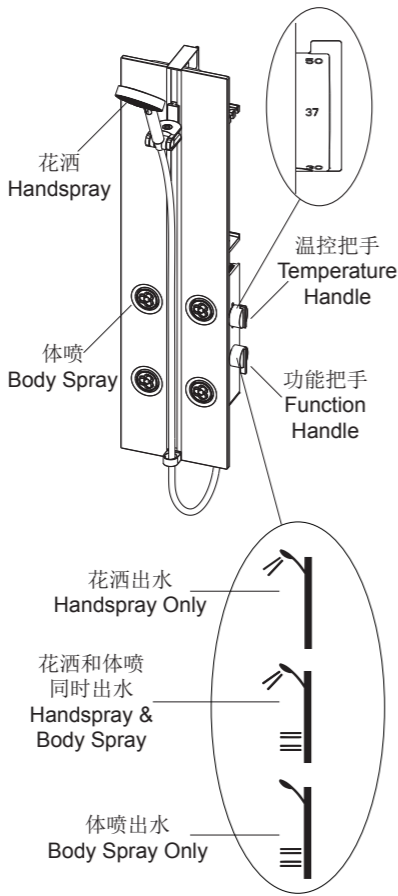
使用说明

安装完成后，请撕掉淋浴面板的保护膜。

自上开始，第一个把手控制温度，慢慢地旋转温控把手，调整温度，安全限位温度为37°C，如果想得到更高的温度，按住按钮继续旋转。

第二个把手控制出水方式，竖直方向为关闭档(OFF)，顺时针转动把手，依次为手持花洒出水，手持花洒与体喷同时出水，体喷出水。把手旋转360度可切换四个档位。

正对淋浴屏，温控把手与功能把手上显示的图标表示当下的温度与功能。



HANDLE OPERATION

Remove the protective cover of the panel faceplate after installation finished.

From top of the shower panel, the first handle regulate the temperature. The temperature is set by slowly turning the temperature handle. For safety reasons, there is a stop that limits temperature to 37°C. To get a higher temperature, push the button and continue turning the temperature selector.

The second one regulate the body spray and handspray. The vertical direction of the handle is off mode. Turn handle clockwise, first, the handspray works, then both the handspray and body spray work, next the body spray works. Rotate the handle 360 degrees to switch four mode.

Face the shower panel, the icons on the temperature handle and function handle indicate the current status.

维护与保养

如何清除喷嘴水垢，杂质

喷孔杂质或结垢会导致水流变形，流量变小。用手指用力按压或者摩擦橡胶喷嘴，去除杂质或水垢。用同样的方法清理手持花洒。

CARE AND MAINTENANCE

How to Clean the Nozzles

Any debris or mineral build-up may cause the flow stream distorted or reduce the flowrate. Press or rub back and forth across the rubber nozzles with fingers, run water through the body spray to remove the debris or mineral build-up. The handspray can be cleaned up by the same way.

如何清洗淋浴面板

淋浴屏的白色面板表面易沾污渍，对于一般污渍，用干净的软布沾温和的中性水清洗污渍处，然后擦干整个表面。对于顽固的污渍，可用百洁布或橡皮擦清除，再用软布清洗干净。

How to Clean the Panel Faceplate

White faceplate surface of the shower panel is stained. For the normal stain, use clean soft cloth with water or neuter cleaner, to wipe and dry the surface. For the stubborn stain, clean with the scouring pad or rubber eraser. Wipe the surface with clear soft cloth.

KOHLER®

INSTALLATION INSTRUCTIONS

安装说明书

晨雨

AWAKEN

Thermostatic Shower Panel

45881T 恒温淋浴屏

安装之前

所有的资料是按最新出版的产品资料编写而成。科勒公司保留任何时候不经通知即可改变产品特性、包装或产品可供类型的权利。

说明书包括重要的安装、保养及清洁方面的内容，请把这些资料交给用户阅读。

BEFORE YOU BEGIN

All information is based on the latest product information available at the time of publication. Kohler Co. reserves the right to make changes in product characteristics, packaging, or availability at any time without notice.

Please leave these instructions for the consumer. They contain important information.

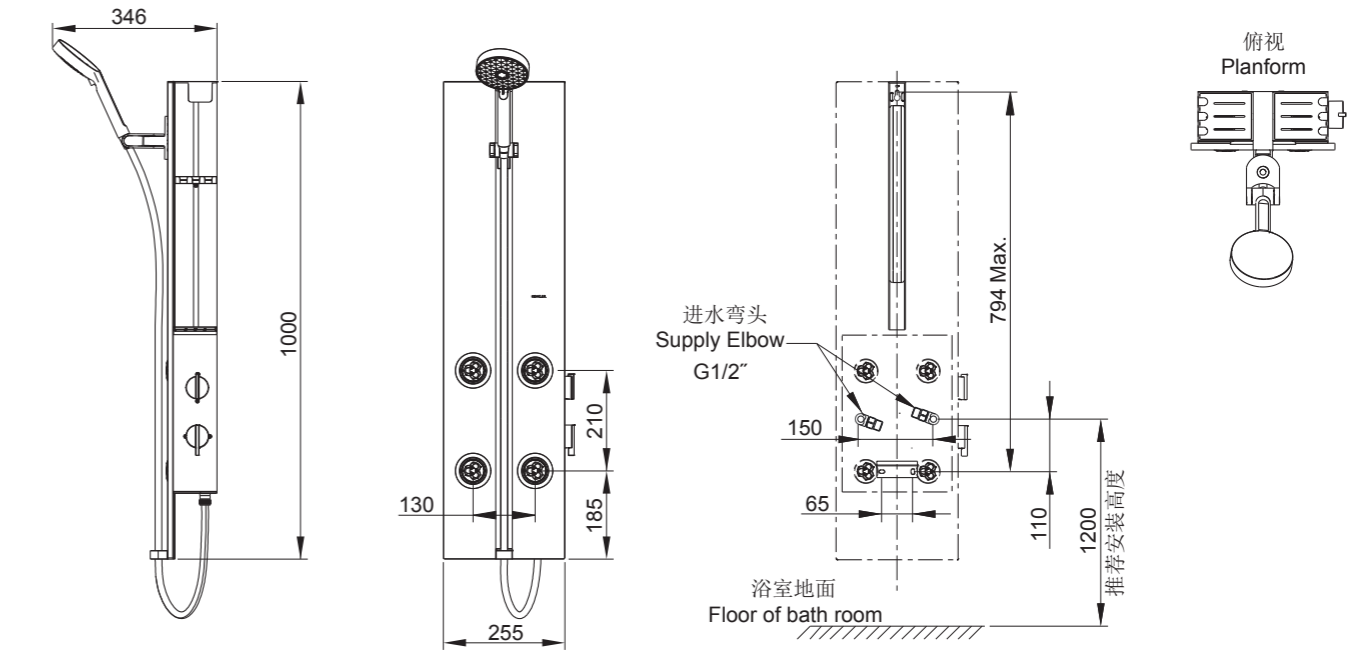
使用环境

1. 最小供水压力: 2bar(0.2MPa); 最大供水压力 8bar(0.8MPa)。
2. 推荐冷热供水的静态压力: 3bar(0.3MPa)。
3. 冷热供水的压力差不大于2bar(0.2MPa)。
4. 热供水温度最低: 50°C; 最高: 70°C。
5. 推荐的热供水温度: 60°C。
6. 温度调整的基本范围为: 20°C到50°C。
7. 安全限位温度: 37°C。
8. 花洒最高使用环境温度: 60°C。请特别注意花洒同花洒连接的臂管须远离浴霸，否则可能损坏花洒及其密封件，甚至对使用者造成伤害。

OPERATION CONDITION

1. Minimum supply pressures: 2 bar(0.2MPa). Maximum supply pressures: 8 bar(0.8MPa).
2. Recommended supply pressures: 3 bar on hot and cold water.
3. Pressure difference between hot & cold supplies: 2bar maximum.
4. Hot supply water temperatures, minimum: 50°C, maximum: 70°C.
5. Recommended hot supply water temperature: 60°C.
6. Setting range, approximately: 20°C to 50°C.
7. Safety stop at: 37°C.
8. The highest environment temperature for handspray & bodyspray is 60°C. Please keep handspray and bodyspray away from heater, or it may become damaged and cause injury to the user.

安装尺寸



安装步骤

如何安装淋浴屏

推荐冷热供水管到装修好的浴室地面高度为1200mm, 供水管中心距离为150mm, 并保持水平, 热水供水管应装在左侧。

先在安装模板(1)冷热进水孔位置用刀划出孔位。

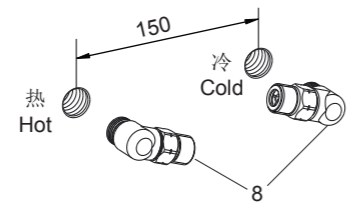
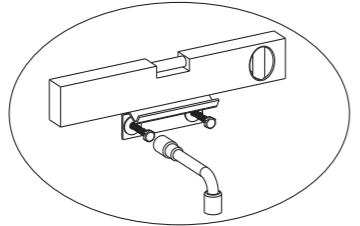
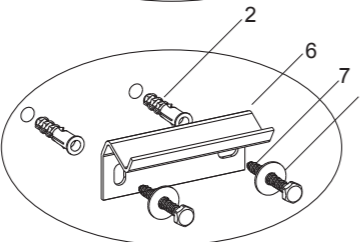
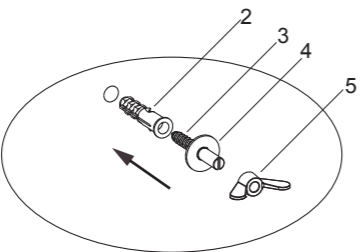
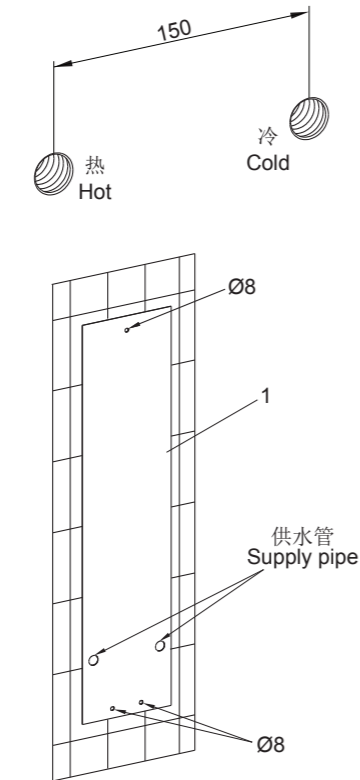
将安装模板冷热水位对准墙面上的冷热供水孔, 找正模板。用胶条固定。在模板标识的位置上打三个直径8mm的孔。

取下安装模板, 安装胀塞(2)、螺钉(3)、垫片(4)和蝶形螺母(5)。

用胀塞(2), 垫片(4)和螺钉(7)安装托架(6), 用水平尺找平托架, 用扳手锁紧螺钉以固定托架。

开启主水源, 让水流出约一分钟, 以清除杂质。

进水弯头(8)不带接头端的为进水端。将进水弯头进水端螺纹上缠绕足以密封的密封胶带或涂上适合的密封胶, 然后将进水弯头旋紧到供水管上。热水进水管朝向右下方, 冷水进水弯头朝向左上方。



INSTALLATION

How to Install the Shower Panel

The recommended height from supply fittings to the finished floor of the bathroom is 1200mm. The fittings are spaced 150mm apart from center to center horizontally. The hot one should be located on the left.

Cut out the hot and cold water supply fittings on the mounting templet(1) with knife.

Put the mounting templet against the finished wall. Position it and align the holes with the supply fittings. Stick it onto the finished wall with adhesive tape. Drill three holes(diameter 8mm) on the finished wall as the locations marked on the mounting templet.

Remove the mounting templet. Install the anchor(2), screw(3), washer(4) and butterfly nut(5).

Mount the wall fixture bracket(6) with anchors(2), washers(4) and screws(7). Make sure the bracket(6) horizontal and secure.

Turn on the main water supply. Run water for about one minute to remove any debris.

The end without connector of the water supply elbows(8) are the inlets. Apply tape or thread sealant to the threads of inlets. Install the elbows onto the fittings. Make sure the outlet of hot water elbow towards lower right and the outlet of cold water elbow towards upper left .

将淋浴屏的下背板(9)支撑在托架(6)上。将上背板(10)上的挂钩(11)挂到垫片(4)的下面, 调整蝶形螺母, 使其可以挂住整个淋浴屏。

将软管(13)带垫片(12)连接到进水弯头(8)上并锁紧。**注意:**先将短软管连接到冷水进水弯头, 再将带红色标签的长软管接热水。

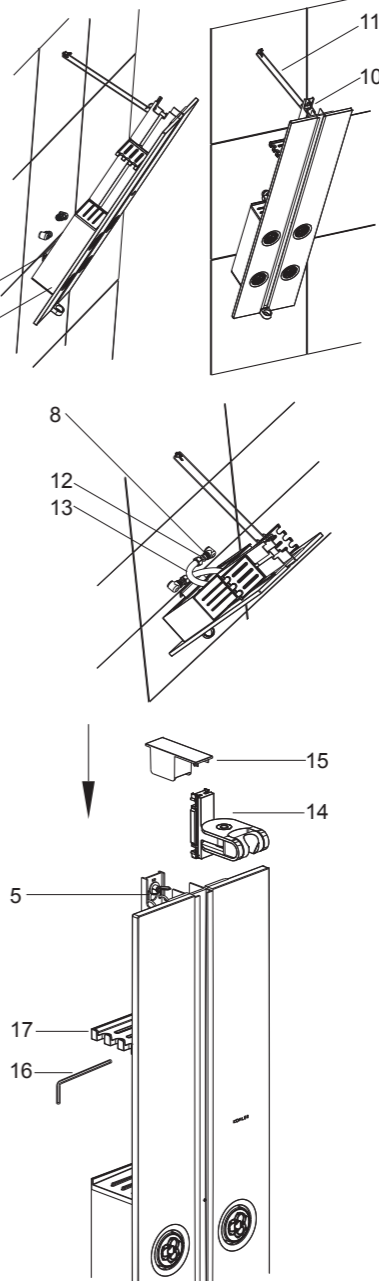
取下蝶形螺母(5)和垫片(4)。后推淋浴屏, 脱开挂钩, 小心上举淋浴屏, 使上背板上的开槽卡入螺钉(3), 同时将下背板插入托架(6)。找正淋浴屏。装入垫片, 锁紧蝶形螺母固定淋浴屏。

将花洒托架(14)安装到淋浴屏中, 需注意花洒托架长端朝上, 花洒托架可在300mm的范围内滑动。将上盖(15)装到淋浴屏顶部。

用2mm六角扳手(16)松动挂板(17)内的螺钉, 调整挂板到合适的高度, 锁紧螺钉。挂板高度可以根据客户意愿调整。

安装手持花洒

将花洒软管(18)一端穿过淋浴屏底部的环(19)再带垫片(20)锁到下盖板接头(21)上。根据需要选择是否将限流器(23)放入手持花洒(22)进水端, 再将花洒软管另一端连接到手持花洒, 锁紧所有衔接螺母, 把手持花洒挂在花洒托架上。



Support the lower base(9) of the shower panel onto wall fixture bracket(6). Hang the hook(11) which attached to upper base(10) under the washer(4). Adjust the butterfly nut, make sure the panel secure.

Tighten the hoses(13) with washers(12) to elbows(8). **Note:** Connect the short hose to the cold water supply elbow firstly, and then connect the longer hose with red mark to hot water supply elbow.

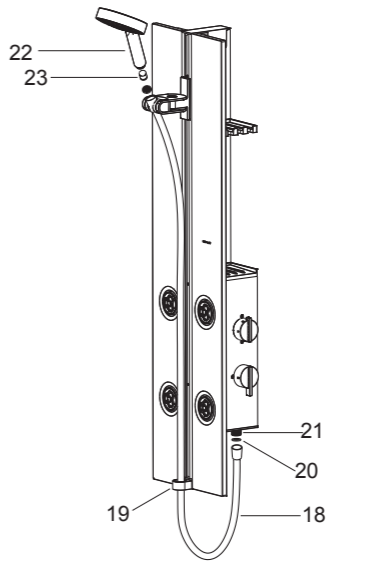
Unpack the butterfly nut(5) and washer(4). Push back the shower panel. Unlock the hook. Carefully lift the shower panel. Push the slot of the upper base onto the screw(3) and make the upper base against the wall. At the same time, insert the lower base into the behind of the wall fixture bracket(6). Position the shower panel. Install the washer, tighten the butterfly nut(5) to secure the shower panel.

Install shower bracket(14) into the top of the shower panel, keep the long end upward. The adjustment range of the shower bracket is within 300mm. Install the top cover(15).

Loosen the screw of the hook(17) with the 2mm hex wrench(16). Adjust the height of the hook as needed. Tighten the screw.

Install The Handspray

Put the hose(18) through the ring(19) of the shower panel, then connect it with the washer(20) to the connector(21) of the lower base. Put the regulator(23) into the handspray(22) inlet if needed. Connect the other end of the hose to handspray. Tighten all the nuts. Hang the handspray on the shower bracket.



温控阀清洗

如果供水的水质较硬或长时间使用，水垢或杂质会阻塞温控阀上的滤网，使流量降低。

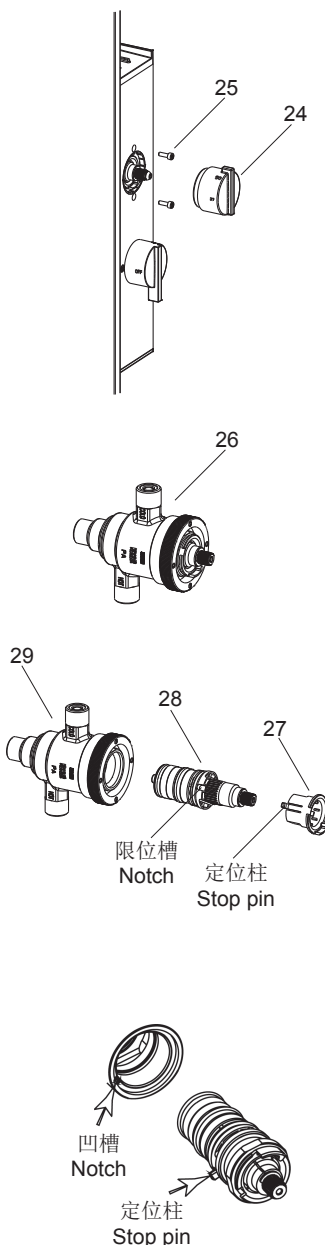
需要清理请按照下列步骤进行：

关闭供水系统，使流量阀处于打开位置后进行温控阀的拆卸作业。温控阀是较敏感的配件，所以要十分小心。

拆卸上盖(15)，松开蝶形螺母，挂上挂钩，取出淋浴屏支撑在托架上。

拆卸前确保温控把手(24)朝向上方(即37°C标示正对)，用力外拉温控把手组件。然后用3mm六角扳手将螺钉(25)卸下。从淋浴屏后面将温控阀组件(26)取出。旋下限位组件(27)。小心地卸下温控阀(28)用热醋进行清洗。

清洗后，将限位组件装到温控阀上，使塑料套的定位柱嵌入温控阀的限位槽内。然后将塑料套的定位柱与本体(29)内孔凹槽对齐，装入温控阀并锁紧螺母。装回温控阀组件，用螺钉(25)锁紧。装回温控把手组件(注意方向与拆卸前一致)。按前述装回淋浴屏及上盖。



Clean Thermostatic Cartridge

Very hard water can obstruct the filters on thermostatic cartridge and reduce the flow of water.

Please clean the cartridge as follows:

Shut off the water supplies of the faucet and open the flow valve, then proceed to remove the cartridge. The cartridge is sense organ, please be careful.

Disassemble the upper covers(15). Loosen the butterfly nut. Hang the hook. Take out the shower panel and hold it on wall fixture bracket.

Make sure the temperature handle(24) upwards(The icon 37°C shown) before action. Pull out the temperature handle kit with forceful. Unscrew the screws (25) with 3mm hex wrench. Take out the temperature valve kit(26). Remove stop assembly(27). Removing the thermostatic cartridge(28) cautiously. Clean the thermostatic cartridge by soaking it in warm vinegar.

After cleaning, install the stop assembly back to the cartridge, adjusting the stop pin into the notch. Install the cartridge and stop assembly into the body(29), adjusting the stop pin into the notch of the body. Reinstall the temperature valve kit. Secure it by screws(25). Reinstall the temperature handle kit(Make sure the direction consistent with before). Reinstall the shower panel and the upper cover as previous procedure.

清洗说明

适用于所有加工处理过的表面：以中性肥皂水清洗镀层表面，再以干净的软布彻底擦干整个表面，许多清洁剂，比如氨水、去污粉及洁厕灵等，会对电镀表面造成伤害，切忌使用。

有磨损性的清洁用具或清洁剂也不可使用时科勒牌的水龙头及其配件上。

CLEANING INSTRUCTIONS

All Finishes: Clean the finish with mild soap and warm water. Wipe entire surface completely dry with clean soft cloth. Many cleaners may contain chemicals, such as ammonia, chlorine, toilet cleaner etc, which could adversely affect the finish and are not recommended for cleaning.

Do not use abrasive cleaners or solvents on Kohler faucets and fittings.

****Color code must be specified when ordering**