



**Need help?** Contact our Customer Care Center.

**需要帮助?** 联系科勒客服中心


中国上海市静安区江场三路158号  
+ (86) 800-820-2628  
+ (86) 400-820-2628  
www.kohler.com

## IMPORTANT INSTRUCTIONS

 **WARNING: Risk of scalding.** High water temperature can cause severe burns. Set the water temperature at or below 120°F (49°C) following the adjustment procedure in the valve Installation and Care Guide.

 **WARNING: Risk of property damage.** Do not crush, cut, or expose batteries to sunlight, fire, or other forms of excessive heat.

 **WARNING: Risk of property damage.** Do not expose batteries to extremely low air pressure.

 **WARNING: Risk of property damage.** Do not expose this device to sunlight, fire or similar excessive heat of the environment.

**NOTE:** If charging with a power adapter, please make sure to purchase the adapter that is CCC certified and meets the standard requirements.

**CAUTION: Risk of product damage.** The wireless speaker and battery are rated to operate in temperatures up to 113°F (45°C). Do not expose to heat sources where the temperature may exceed 113°F (45°C).


**CAUTION: Risk of product damage.** The speaker is rated to IPX7 for temporary immersion, and should not be submerged for more than 30 minutes.


**CAUTION: Risk of product damage.** To prevent accidental release from the showerhead, remove the speaker before adjusting the showerhead position.


To prolong the battery lifespan, fully charge at least once every 3 months. Battery life will vary due to usage patterns and environmental conditions.


The Bluetooth® word mark and logos are registered trademarks owned by Bluetooth SIG, Inc. and any use of such marks by Kohler Co. is under license. Other trademarks and trade names are those of their respective owners.

## 重要说明

 **警告：烫伤危险。**水温过高会导致严重烧伤。请按照阀芯安装和维护说明中的调整步骤，将水温设置为或低于49°C。

 **警告：财产损失风险。**切勿挤压、切割或将电池置于阳光、火源或其它过热环境中。

 **警告：财产损失风险。**切勿将电池置于极低气压下。

 **警告：财产损失风险。**此产品请勿暴露在诸如日照、火烤或类似过热环境中使用。

**注意：**消费者若适用电源适配器充电，则应购买配套使用获得CCC认证并满足标准要求的适配器。

**警示：产品损坏风险。**音乐魔雨无线迷你音箱和电池的工作温度最高可达45°C。请勿接近热源或温度超过45°C的地方。

**警示：产品损坏风险。**音乐魔雨无线迷你音箱符合IPX7，可短时浸水，但不得浸入水中超过30分钟。

**警示：产品损坏风险。**为防止音乐魔雨无线迷你音箱意外脱落，在调整头顶花洒之前，请先拆下音乐魔雨无线迷你音箱。

为延长电池寿命，至少每3个月充满一次电。电池寿命会因使用情况和环境条件差异而有所不同。

Bluetooth® 字标和图标为蓝牙技术联盟的注册商标，科勒公司使用此类标志均为授权使用。其它商标和商品牌号均属于各自的供应商所有。

## Installation Instructions

### 安装说明书

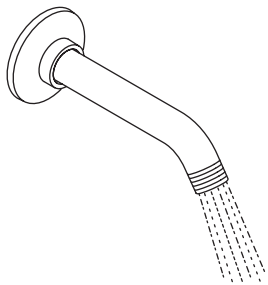
Showerhead and Wireless Speaker

音乐魔雨头顶花洒

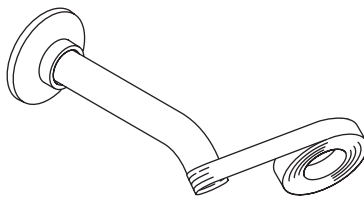
K-28238-NKE  
K-R28238T-NKE

**KOHLER®**

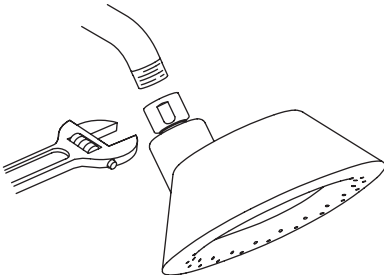
1



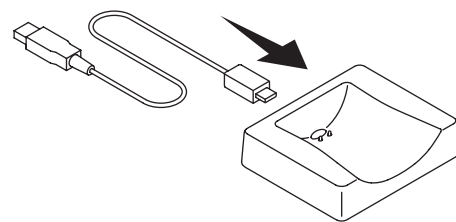
2



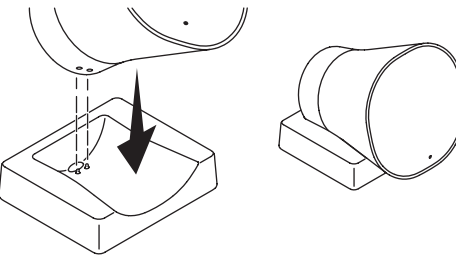
3



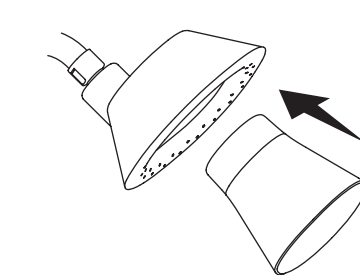
4



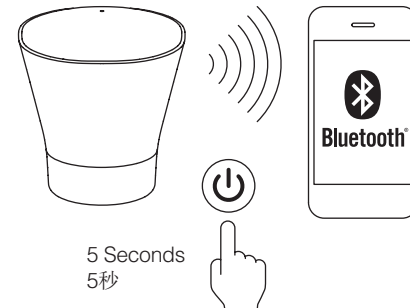
5



6



7



8

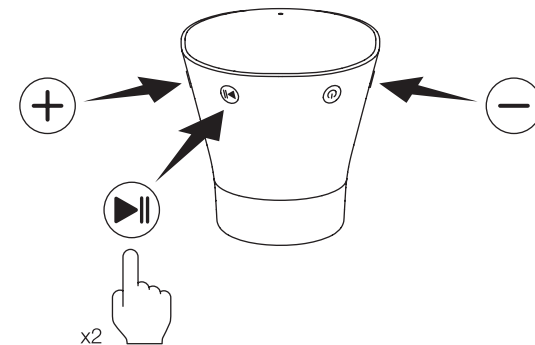
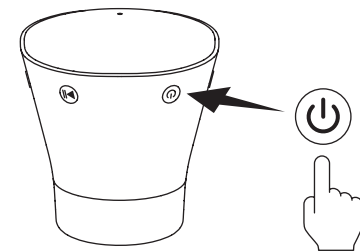


## Power/Pair

- **Turn ON:** short-press.
- **Pair device (speaker on):** short-press.
- **Pair device (speaker off):** press and hold 5 seconds.
- **Turn OFF:** press and hold.

## 开关/配对

- **开机:** 短按电源键。
- **配对设备(音乐魔雨无线迷你音箱开启时):** 短按电源键。
- **配对设备(音乐魔雨无线迷你音箱关闭时):** 按住电源键5秒。
- **关机:** 按住电源键。



## Functions

- **Skip music tracks:** double-press the play button.
- **Change mode (shower or tabletop):** long-press both volume buttons simultaneously.

## 功能

- **跳过音乐曲目:** 双击播放键。
- **更改播放模式(淋浴模式或普通模式):** 同时长按两个音量键。  
—淋浴模式适合在淋浴时聆听音乐;  
—普通模式适合在淋浴房外使用。



## Phone Control

- **Answer a call:** short-press the play button.
- **Reject a call:** long-press the play button.
- **Use phone assistant:** press and hold the play button.

## 手机控制

- **接听来电:** 短按播放键。
- **拒绝来电:** 长按播放键。
- **使用手机助手:** 按住播放键。