

KOHLER®

INSTALLATION INSTRUCTIONS

安装说明书

萝瑞
LOURE
Shower Bracket

14746T 花洒托架

安装之前

所有的资料是按最新出版的产品资料编写而成。科勒公司保留任何时候不经通知即可改变产品特性、包装或产品可供类型的权利。

说明书包括重要的安装、保养及清洁方面的内容，请把这些资料交给用户阅读。

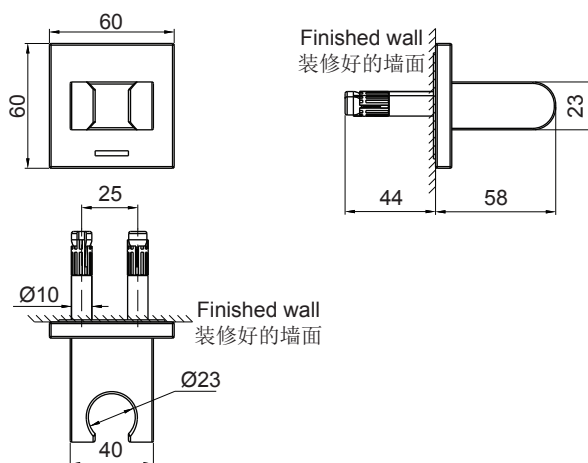
BEFORE YOU BEGIN

All information is based on the latest product information available at the time of publication. Kohler Co. reserves the right to make changes in product characteristics, packaging, or availability at any time without notice.

Please leave these instructions for the consumer. They contain important information.

安装尺寸

ROUGH-IN DIMENSIONS



安装步骤

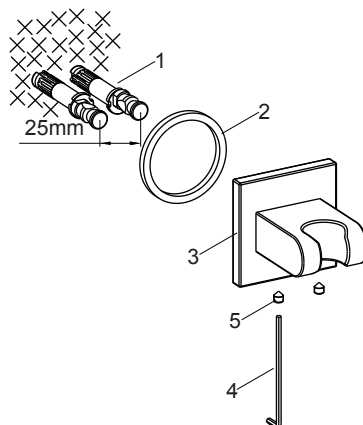
INSTALLATION

如何安装托架

墙面装修好后，选一合适的位置来安装托架。

注意：铆钉为偏心设计，其偏心距为2mm。确保安装好的铆钉中心距为25mm。

根据安装尺寸在墙壁上标记铆钉(1)安装孔位，钻直径为10mm，深度为50mm的孔。用胶锤将铆钉敲入铆钉孔中。用活动扳手右旋铆钉，使其紧贴并紧固于墙面。适当调整铆钉，使其中心距为25mm。



How To Install The Bracket

Determine a suitable location after completed the finished wall to install the bracket.

NOTE: The anchor is eccentric. Eccentric distance is 2mm. Make sure the center distance of the anchors is 25mm.

Mark anchor(1) mounting hole locations on the wall according to the dimension. Drill holes with diameter 10mm and depth 50mm. Knock the anchors into the holes with a rubber hammer. Turn right the anchors with a adjustable spanner until against the finished wall. Adjust the anchors so that the center distance is 25mm.

将橡胶垫片(2)装到托架组件(3)底部凹槽。用六角扳手(4)旋松螺钉(5)。将托架组件装入铆钉，保持托架组件螺钉孔朝下，用六角扳手锁紧螺钉，固定托架组件。

Put the rubber washer(2) into the rear groove of the bracket kit(3). Loosen the screws(5) of the bracket kit with the hex wrench(4). Slide the bracket kit onto the anchors. Keep the screw holes of the bracket kit downwards. Tighten the screws with the hex wrench to secure the bracket kit.

清洗说明

CLEANING INSTRUCTIONS

适用于所有加工处理过的表面：以中性肥皂水清洗镀层表面，再以干净的软布彻底擦干整个表面，许多清洁剂，比如氨水、去污粉及洁厕灵等，会对电镀表面造成伤害，切忌使用。

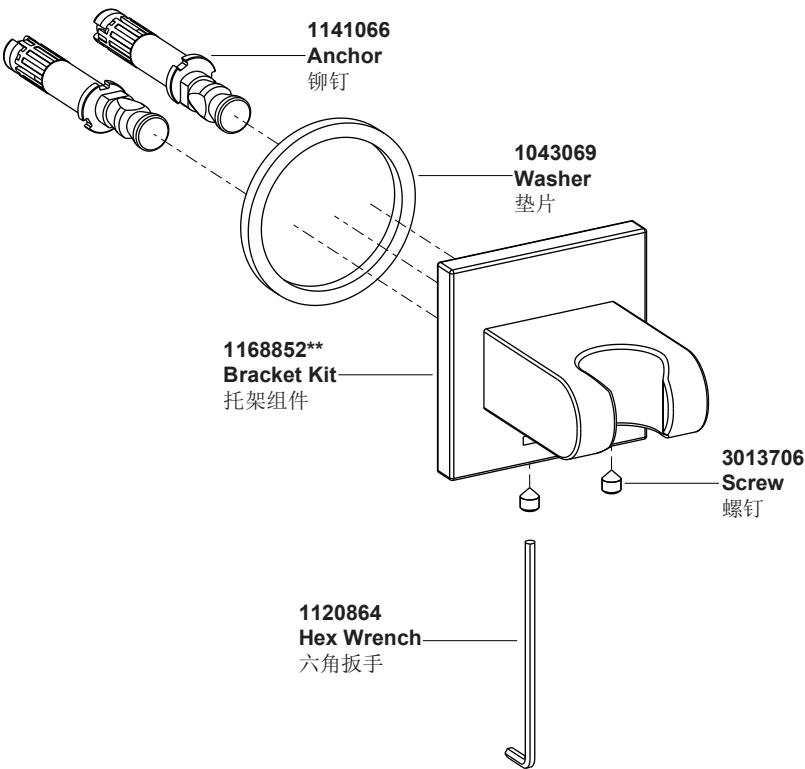
All Finishes: Clean the finish with mild soap and warm water. Wipe entire surface completely dry with clean soft cloth. Many cleaners may contain chemicals, such as ammonia, chlorine, toilet cleaner etc. which could adversely affect the finish and are not recommended for cleaning.

有磨损性的清洁用具或清洁剂也不可使用于科勒牌的水龙头及其配件上。

Do not use abrasive cleaners or solvents on Kohler faucets and fittings.

零件图

SERVICE PARTS



**订购时请说明颜色编号
**Color code must be specified when ordering