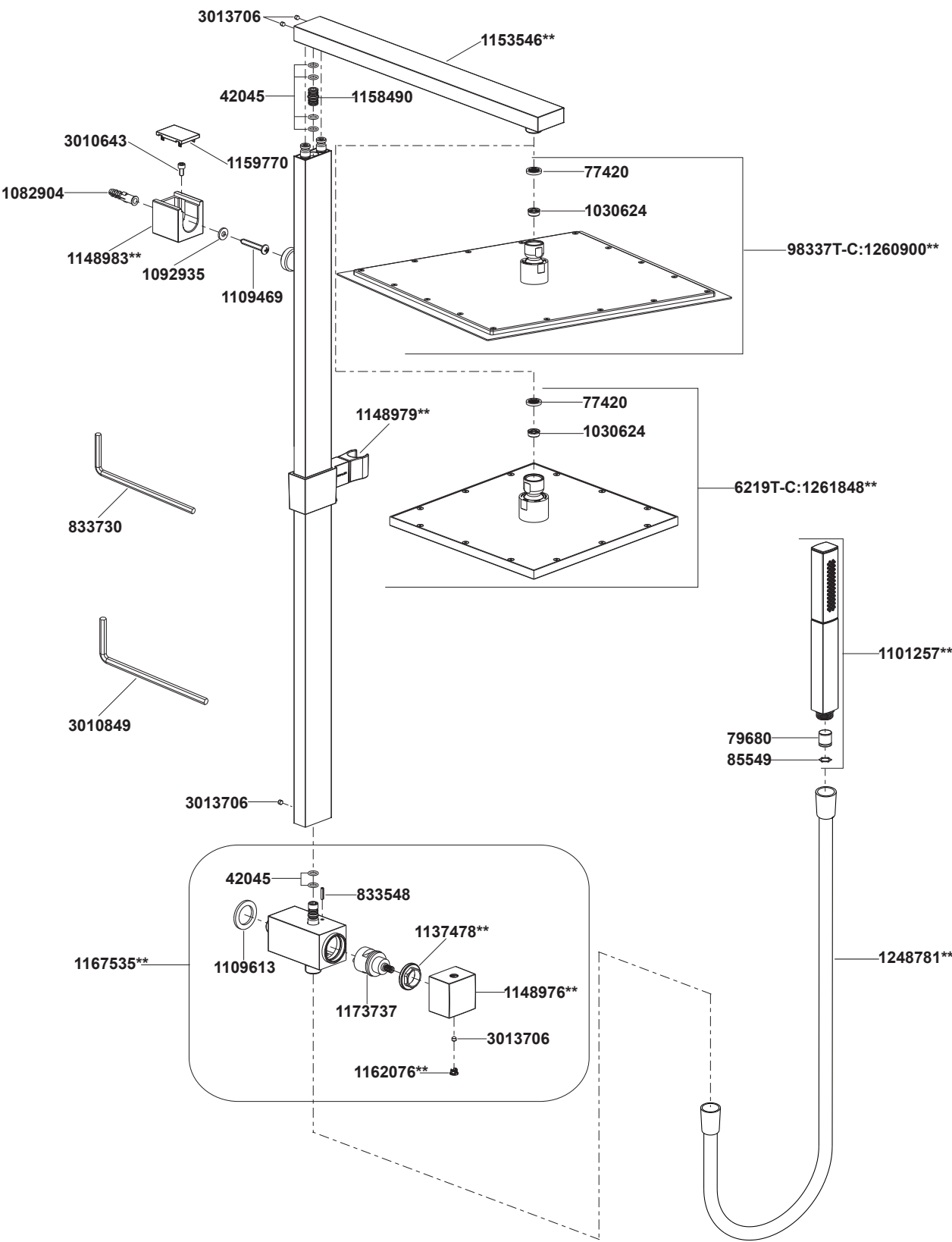


98337T-C 6219T-C Shower Column



**Color code must be specified when ordering

98337T-C 6219T-C Shower Column

BEFORE YOU BEGIN

All information is based on the latest product information available at the time of publication. Kohler Co. reserves the right to make changes in product characteristics, packaging, or availability at any time without notice.

Please leave these instructions for the consumer. They contain important information.

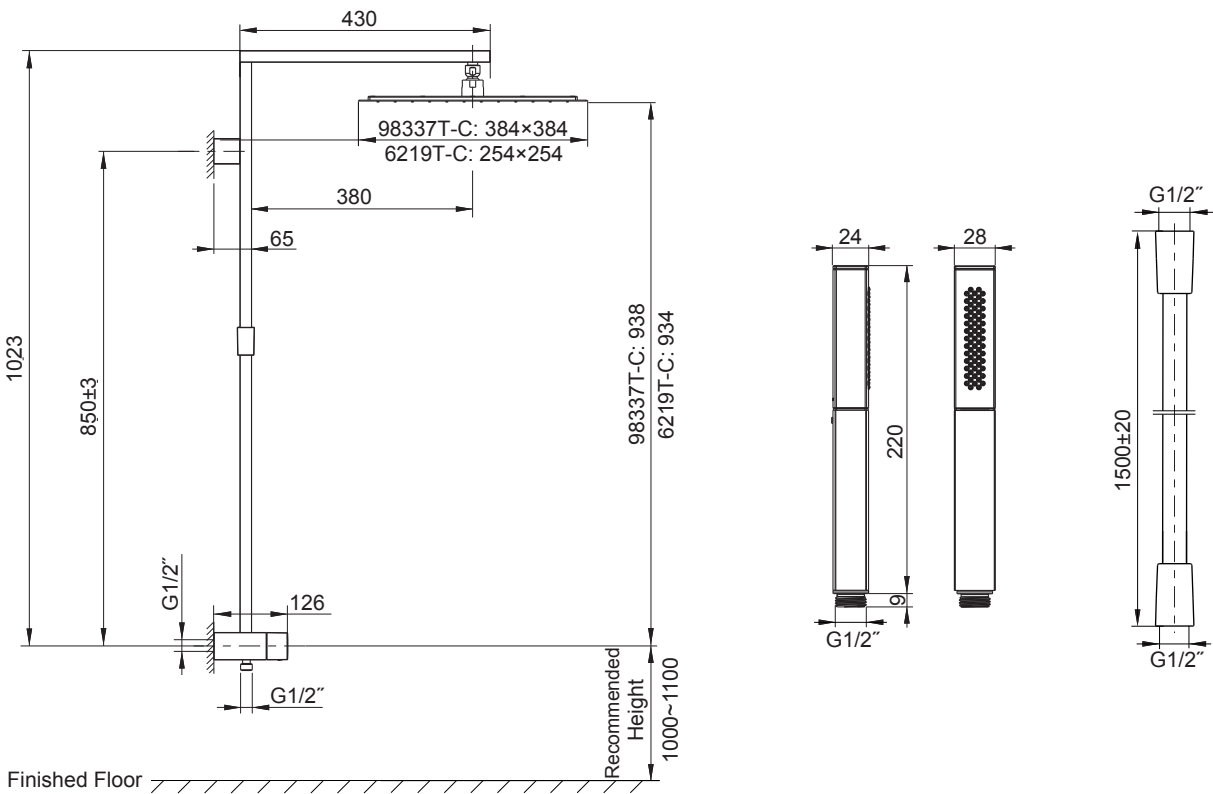
NOTES:

1. Shut off the water supplies to the fitting.
2. Inspect the supply tubing for damage. Replace as necessary.
3. Observe local plumbing codes.
4. Recommended minimum working pressure is 0.2MPa(2bar).
5. The highest working pressure for shower is 0.5MPa(5bar). If it exceeds 0.5MPa(5bar), a pressure reducer is needed. The highest water and environment temperature is 60°C. Please keep showerhead, handshower and shower arm away from heater, or it may become damaged and cause injury to the user.

HANDLE OPERATION

Turn the diverter handle upwards to the side with handshower logo, the handshower will work; turn it upwards to the side without any logo, both showerhead and handshower will work; turn it upwards to the side with showerhead logo, the showerhead will work.

ROUGH-IN DIMENSIONS



INSTALLATION

How to Install the Shower Column

Select a location in vertical wall to install shower column according to rough-in dimensions.

To perform installation, installer must provide G1/2" female supply fitting(1).

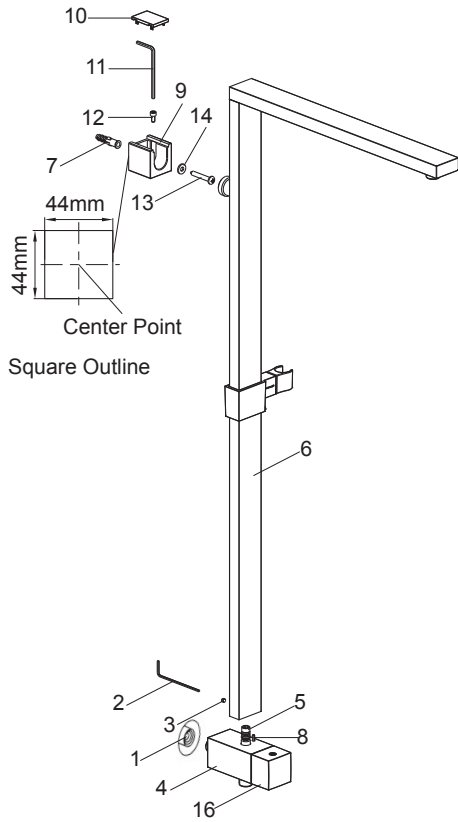
NOTE: The supply fitting should be not beyond and below the finished wall less than 7mm, be vertical as well.

Loosen the screw(3) with the hex wrench(2), and remove the diverter kit(4). Apply tape or thread sealant to the diverter threads. Thread the diverter kit onto G1/2" supply fitting until against the finished wall, adjust diverter kit and make sure the connector(5) facing upwards.

Rehearse the slide bar kit(6) installation for the anchor(7) mounting location determination. Install the slide bar kit onto the diverter kit by the pin(8). Place the base(9) against the finished wall. Mark the square outline of the bottom of the base with a pencil on the wall. Remove the cap(10). Unscrew the screw(12) with the hex wrench(11)(**NOTE:** Don't lose the screw.), and remove the base. Mark the center point of the square outline with a pencil.

Drill a hole on the center point as the anchor diameter. Press the anchor into the hole. Secure the base by the self-tapping screw(13) with the washer(14), and make sure the slot of the base upwards, and the bottom of the base coincides with the square outline on the wall.

Slide the slide bar kit onto the base, and connect the slide bar kit and the diverter kit by the pin. Tighten the screw(3) with the hex wrench(2). Install the screw(12) with the hex wrench(11) and tighten it to secure the slide bar kit. Adjust the base vertically to install the screw, if needed. Install the cap.

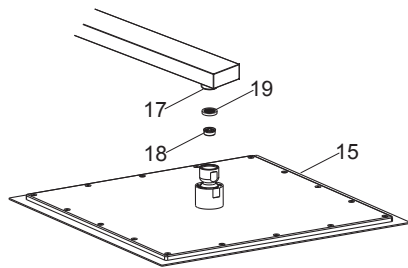


How to Install the Showerhead

Turn the diverter handle(16) upwards to the side with showerhead logo and run hot and cold water for about one minute to remove any debris before the showerhead(15) is installed.

Tighten the showerhead onto the outlet(17) with strap wrench.

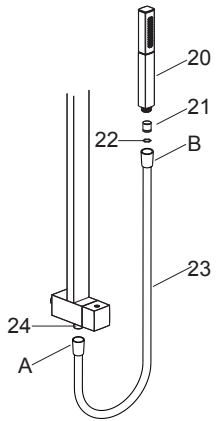
Before installation, install the restrictor(18) if needed. Take out the washer(19) and install the restrictor as the figure shown, reinstall the washer.



How to Install the Handshower and Hose

Turn the diverter handle(16) upwards to the side with handshower logo and run hot and cold water for about one minute to remove any debris before the handshower(20) is installed.

If needed, install the restrictor(21) and spring washer(22) into the inlet of the handshower according to installation instruction. Connect the end A of the hose(23) to the connector(24). Connect the end B of the hose to the handshower.



INSTALLATION CHEKOUT

Ensure that all connections are tight.

Turn on the drain and main water supply, and check for leaks. Repair as needed.

CLEANING INSTRUCTIONS

All Finishes: Clean the finish with mild soap and warm water. Wipe entire surface completely dry with clean soft cloth. Many cleaners may contain chemicals, such as ammonia, chlorine, toilet cleaner etc. which could adversely affect the finish and are not recommended for cleaning.

Do not use abrasive cleaners or solvents on Kohler faucets and fittings.