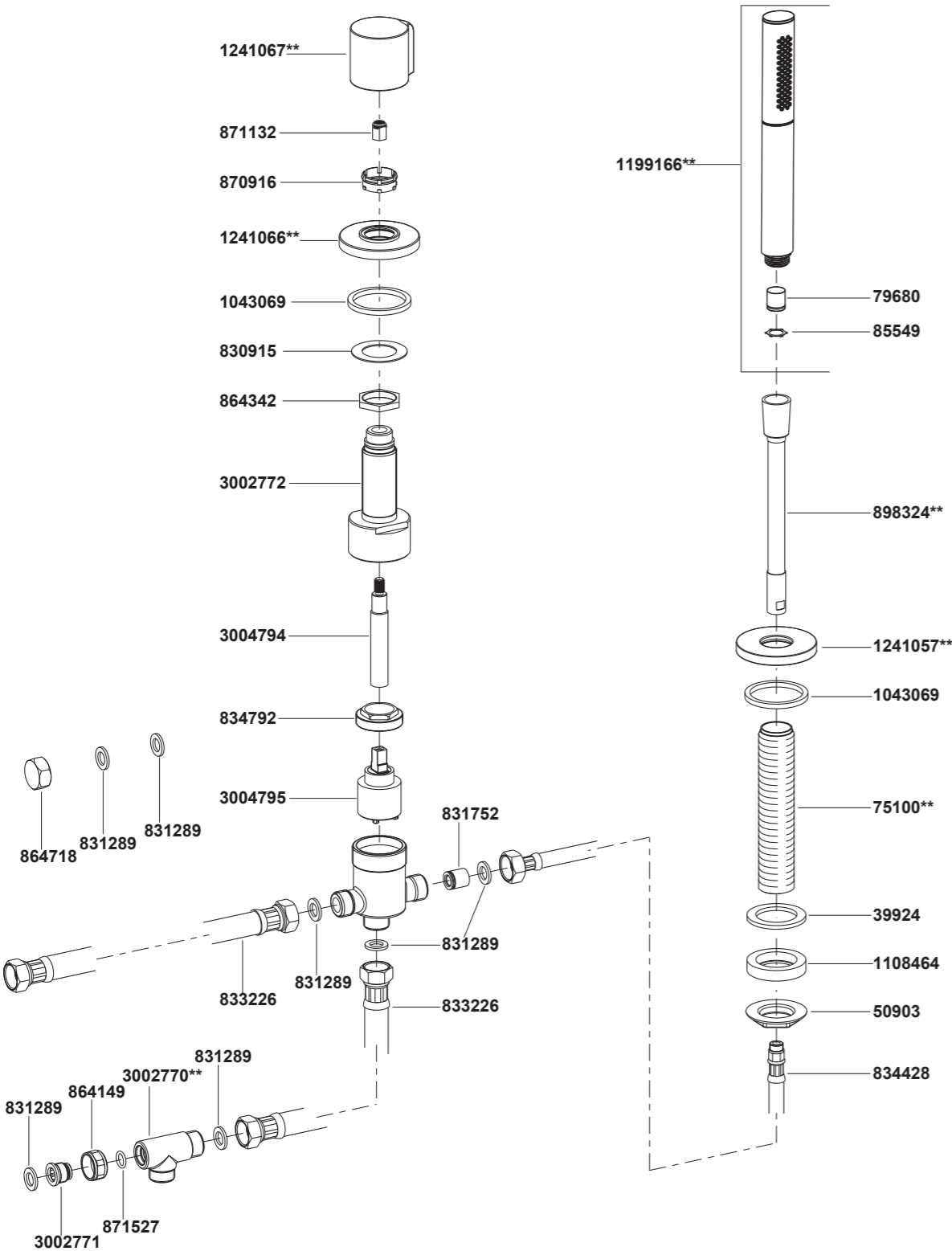


97364T-9 Deck-Mount Diverter And Handshower



**Color code must be specified when ordering.

97364T-9 Deck-Mount Diverter And Handshower

BEFORE YOU BEGIN

All information is based on the latest product information available at the time of publication. Kohler Co. reserves the right to make changes in product characteristics, packaging, or availability at any time without notice.

Please leave these instructions for the consumer. They contain important information.

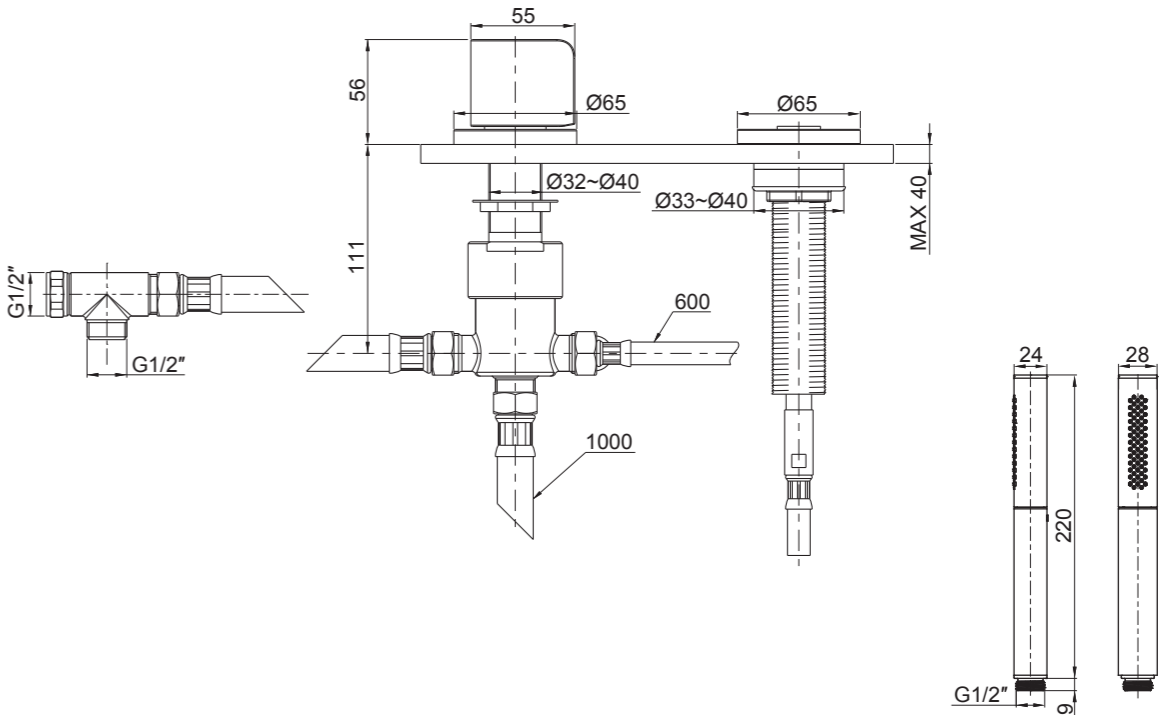
NOTES:

1. Shut off the main water supply.
2. Carefully read entire instructions before beginning installation.
3. Observe local plumbing codes.
4. This faucet has switching function only. It must work with a bath faucet (purchased separately) that has both on/off and hot/cold mixing control.
5. The highest working pressure for handspray is 0.5MPa(5bar). If it exceeds 0.5MPa(5bar), a pressure reducer is needed. The highest water and environment temperature is 60°C. Please keep handspray, showerhead and the shower arm away from heater, or it may become damaged and cause injury to the user.

HANDLE OPERATION

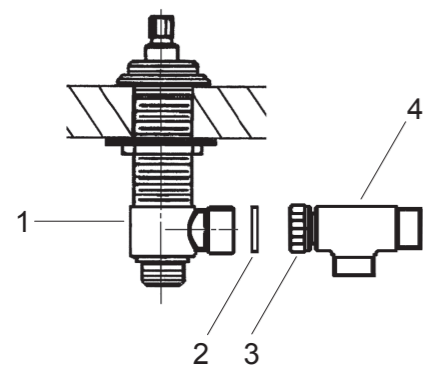
Turn diverter handle clockwise for the bath spout, turn counter-clockwise for the handspray, middle position for both.

ROUGH-IN DIMENSIONS



97364T-9

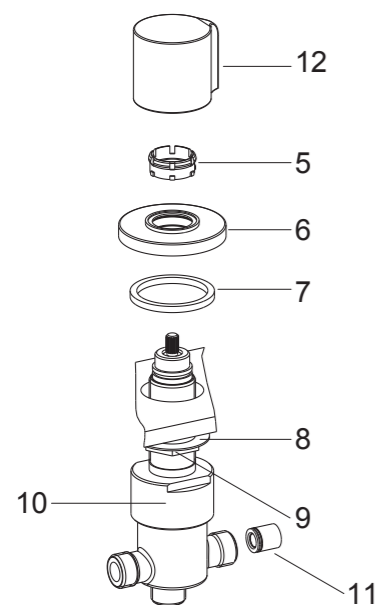
INSTALLATION



①

How to Install the Tee

Put the washer(2) into the nut(3) of the tee(4). Then connect the tee to one side body(1) of the deck-mount bath faucet as the figure shown.



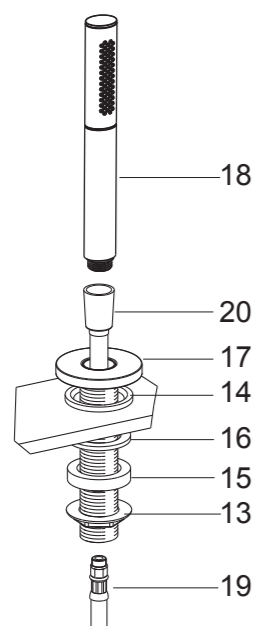
②

How to Install Diverter Body

Remove the parts from the diverter body according to the following order: ratchet ring(5), escutcheon(6) and washer(7). Insert the diverter body(10) with washer(8) and nut(9) through mounting hole from underside of the deck. Reinstall the parts according to the following order: washer(7), escutcheon(6) and ratchet ring(5). Tighten the escutcheon, then wrench tighten the nut(9).

NOTE: The end of diverter with check valve(11) point to handshower.

Press the handle(12) to the ratchet ring.



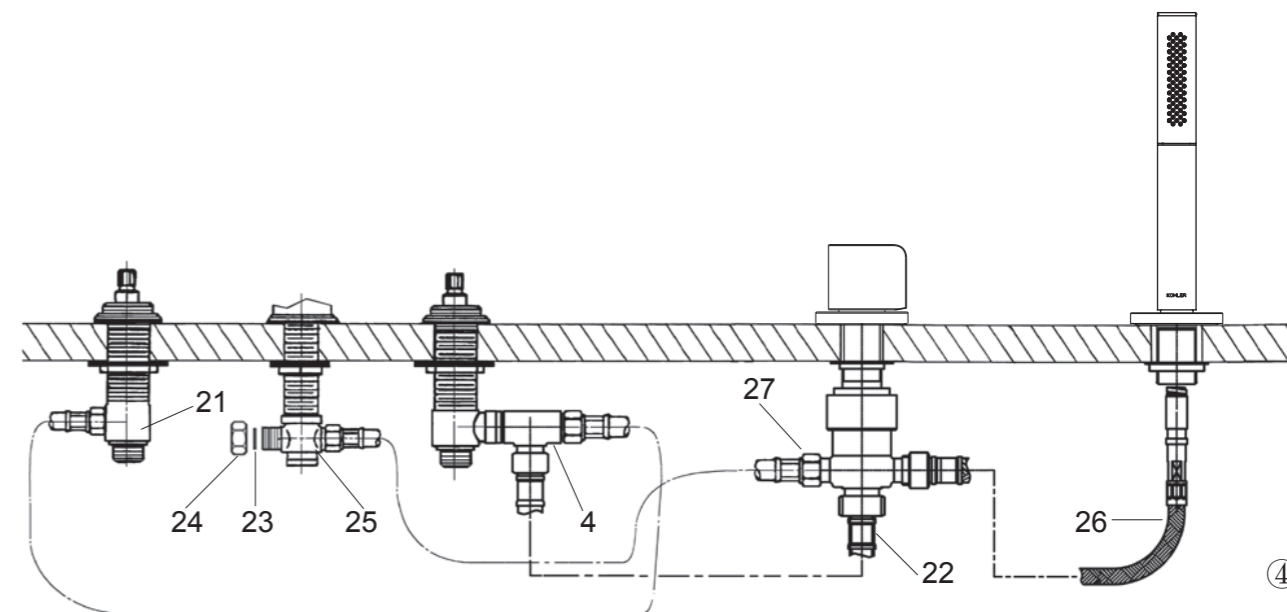
③

How to Install the Handshower

Remove the nut(13), washer(15,16). Put the rubber washer(14) into the groove of the escutcheon(17). Place the shank into the hole. From underside, install the washer(15,16) and nut(13) to the shank. Then tighten the nut firmly.

Slide the hose(20, length: 2m) through the escutcheon(17), and attach to the hose(19, length: 0.6m).

Connect the shower hose(20) and handshower(18).



④

Put the fiber washer(23) into the plug(24), Tighten the plug to one of the ports of the center tee(25) for the spout.

Connect one side body(21) and the tee(4) on another side body with washers and one of the hoses provided with the deck-mount faucet (Remove another hose and put it away).

Connect the tee(4) and bottom port of the diverter with hose(22, length:1m) and washers. Tighten the connection hose(26) to the end (with note label) with washer.

Connect the center tee(25) and another end of the diverter with hose(27, length:1m) and washers.

To ensure the water flows smoothly and the handshower can be drawn out easily, the hose should avoid kinking, twisting. To ease installation, you may back off center tee of the spout up to 180 degree. **NOTE:** Hoses should be only used where indicated.

INSTALLATION CHECKOUT

Ensure all coupling nuts are tight. Turn on main water supply and check for leaks. Repair as required.

CLEANING INSTRUCTIONS

All Finishes: Clean the finish with mild soap and warm water. Wipe entire surface completely dry with clean soft cloth. Many cleaners may contain chemicals, such as ammonia, chlorine, toilet cleaner etc, which could adversely affect the finish and are not recommended for cleaning.

Do not use abrasive cleaners or solvents on Kohler faucets and fittings.