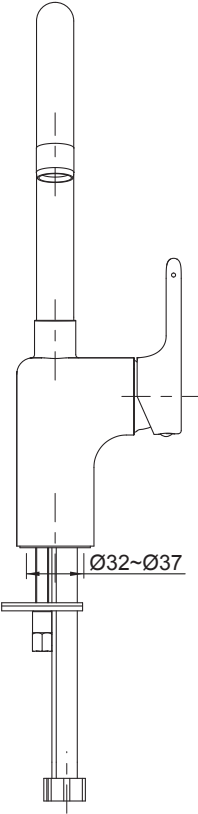
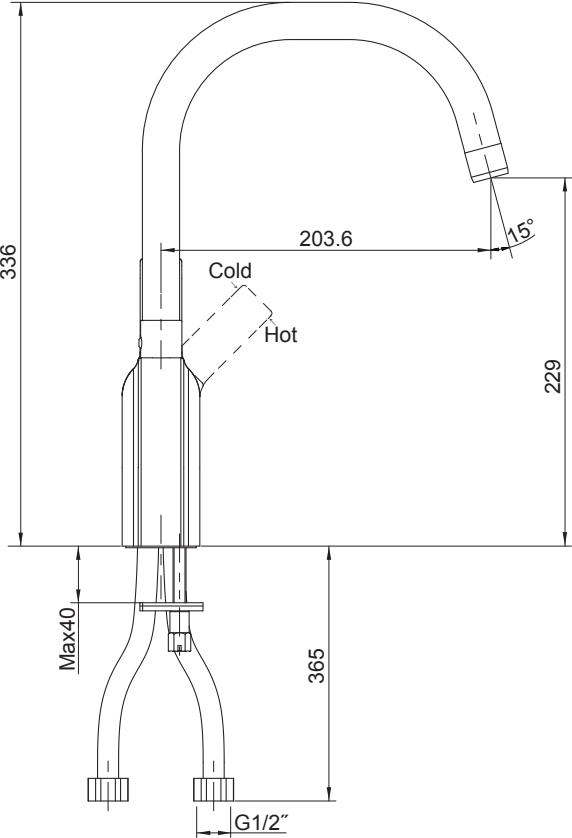


| |
|--|
| 10877T-B4 Single Lever Kitchen Faucet |
| <div><div>BEFORE YOU BEGIN</div><div><p>All information is based on the latest product information available at the time of publication. Kohler Co. reserves the right to make changes in product characteristics, packaging, or availability at any time without notice.</p><p>Please leave these instructions for the consumer. They contain important information.</p><div>NOTES:</div><div><div>1. Flush the water supply pipes thoroughly to remove debris.</div><div>2. For new installations, assemble faucet to sink before installing sink.</div></div></div></div> |
| <div><div>HANDLE OPERATION</div><div><p>Lift the handle gently. Turning for hot and cold water as shown below.</p></div></div> |
| <div><div>ROUGH-IN DIMENSIONS</div><div><div><p>Ø32~Ø37</p></div><div><p>336</p><p>203.6</p><p>15°</p><p>Cold</p><p>Hot</p><p>229</p><p>Max40</p><p>365</p><p>G1/2"</p></div></div></div> |

INSTALLATION

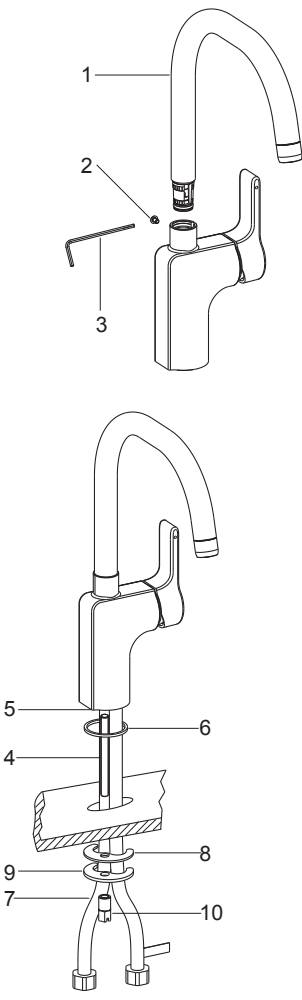
How To Install The Faucet

Insert the the spout kit(1) into the outlet hole. Tighten the screw(2) by hex wrench(3).

Install the mounting stud(4) into the faucet body base(5). Slide the washer(6) into the groove on the body. Insert the flexible supply hoses(7) into the installation hole of sink.

From underside of the sink, place the washer(8), washer(9) and the nut(10) . Position the faucet so that the handle is on the right side. Tighten the nut to secure the faucet to the sink.

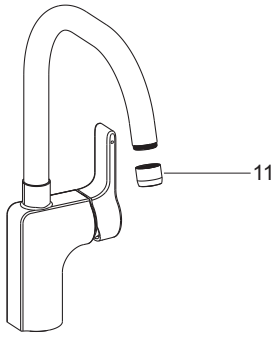
Attach the hoses to water supplies. The hose with red mark is hot water.



INSTALLATION CHECKOUT

Ensure that all coupling nuts are tight. Ensure that the lever handle is in the off position. Turn on the main water supply and drain, and check for leaks. Repair as needed.

Remove aerator assembly(11). Turn the faucet handle on. Run hot and cold water through spout for about one minute to remove any debris. Remove any debris from the aerator assembly. Shut off the faucet. Reinstall aerator assembly.



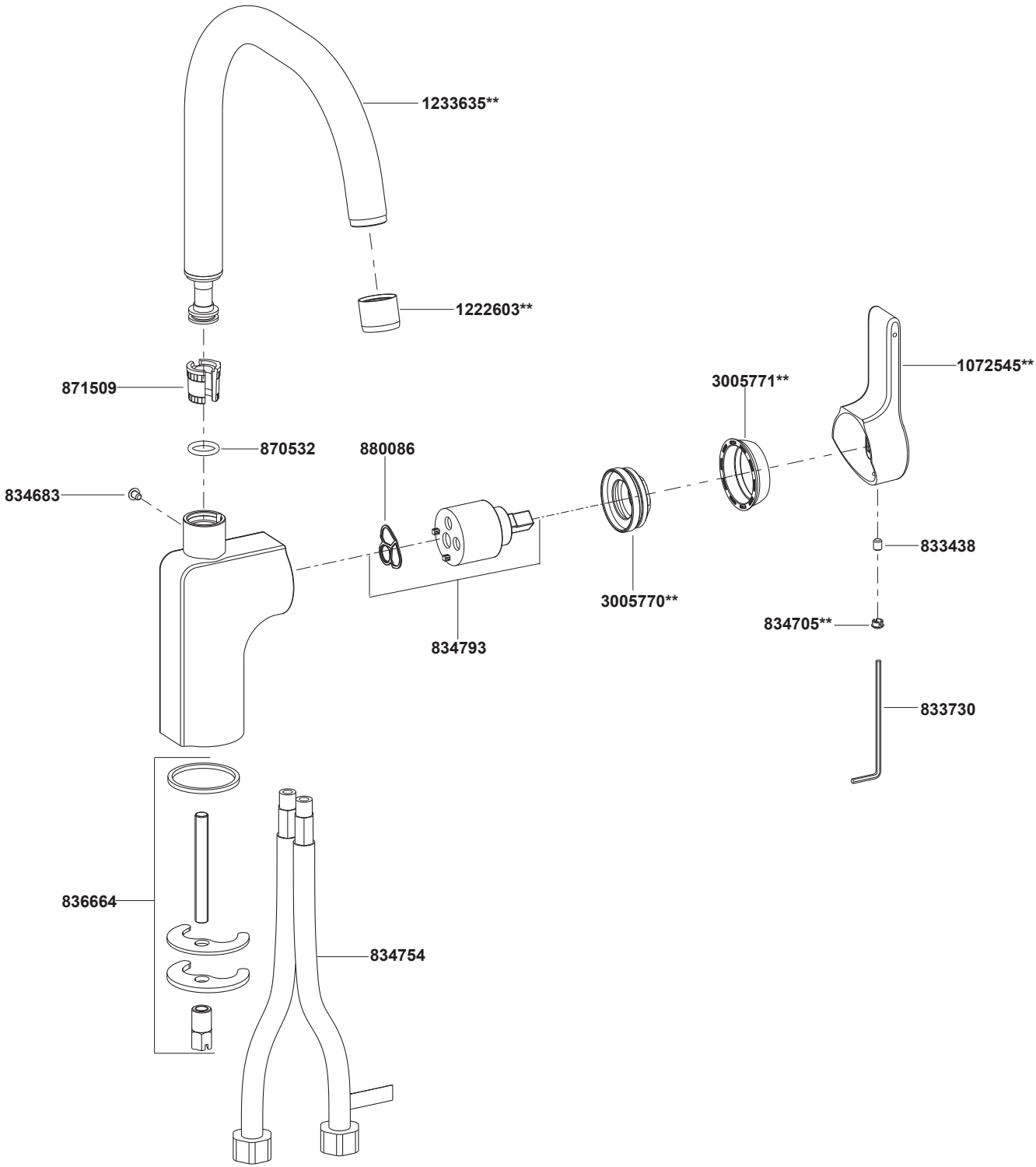
CLEANING INSTRUCTIONS

All Finishes: Clean the finish with mild soap and warm water. Wipe entire surface completely dry with clean soft cloth. Many cleaners may contain chemicals, such as ammonia, chlorine, toilet cleaner etc, which could adversely affect the finish and are not recommended for cleaning.

Do not use abrasive cleaners or solvents on Kohler faucets and fittings.

"LEAD FREE" is marked on the back of the faucet signifying its compliance with the United States AB1953

10877T-B4 Single Lever Kitchen Faucet



**Color code must be specified when ordering