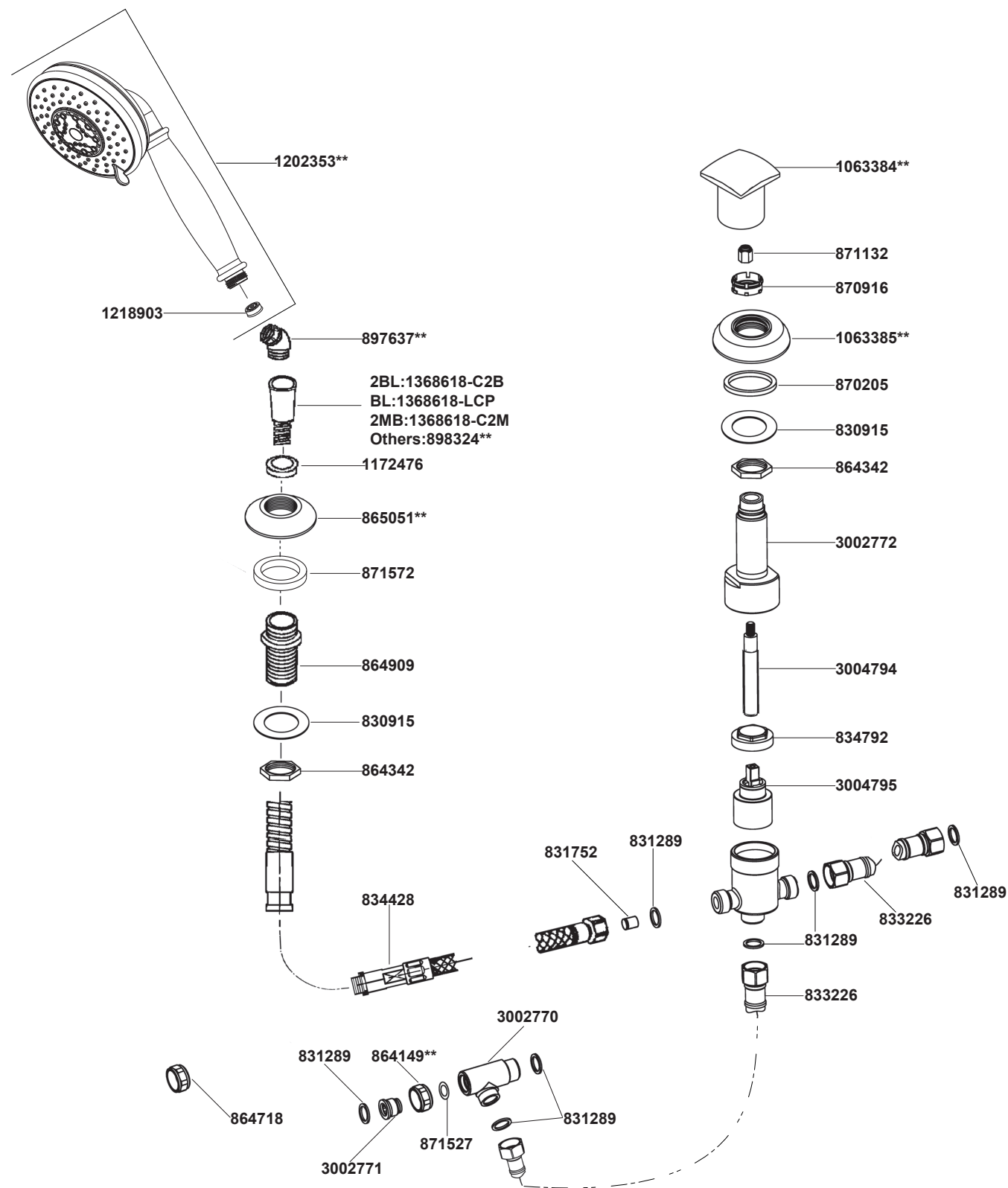


72663T Deck-Mount Handspray & Diverter



****Color code must be specified when ordering**

72663T Deck-Mount Handspray & Diverter

BEFORE YOU BEGIN

All information is based on the latest product information available at the time of publication. Kohler Co. reserves the right to make changes in product characteristics, packaging, or availability at any time without notice.

Please leave these instructions for the consumer. They contain important information.

NOTES:

1. Shut off the main water supply.
2. Carefully read entire instructions before beginning installation.
3. Observe local plumbing codes.
4. This faucet has switching function only. It must work with a bath faucet (purchased separately) that has both on/off and hot/cold mixing control.
5. The highest working pressure for handspray is 0.5MPa(5bar). If it exceeds 0.5MPa(5bar), a pressure reducer is needed. The highest water and environment temperature is 60°C. Please keep the handspray, showerhead and shower arm away from heater, or it may become damaged and cause injury to the user.

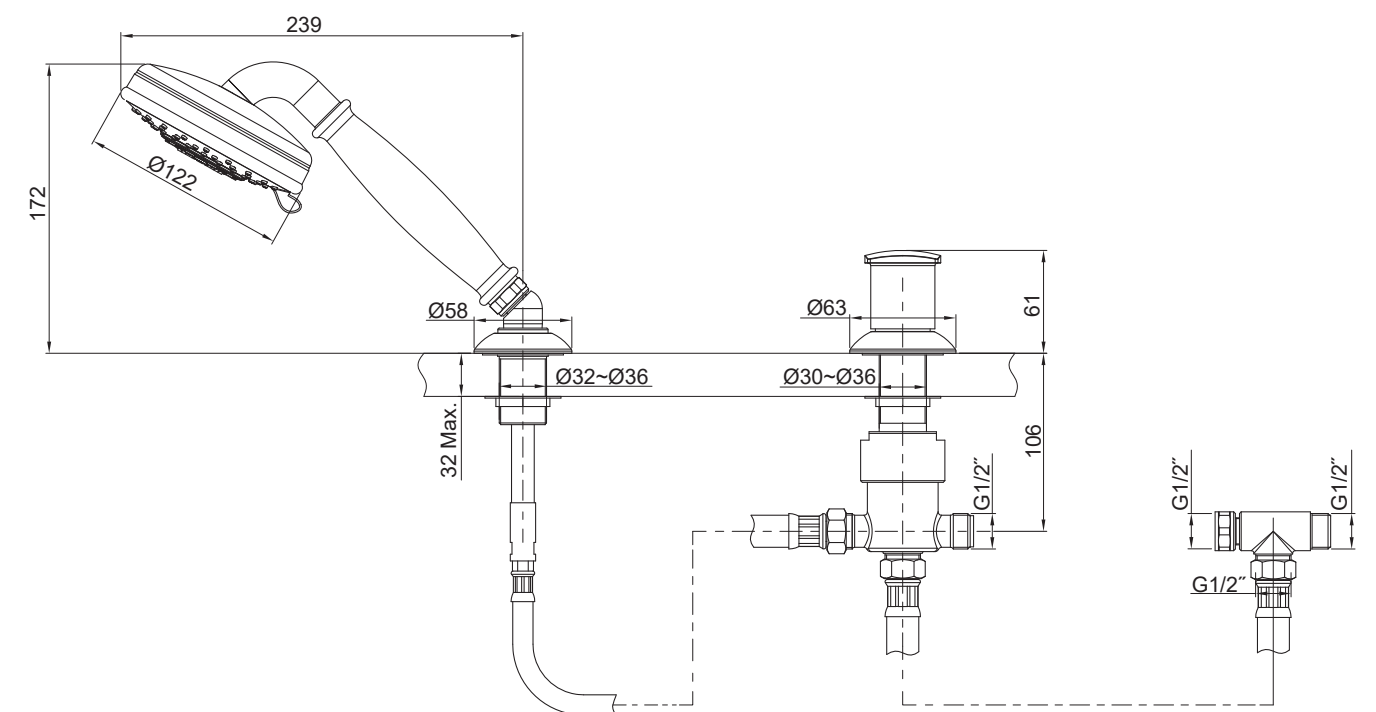
HANDLE OPERATION

Turn diverter handle clockwise for the bath spout, turn counter-clockwise for the handspray, middle position for both.

STANDARD APPLICABLE

Special model meets or exceeds the following at date of manufacture: TIS

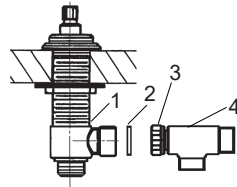
ROUGH-IN DIMENSIONS



INSTALLATION

How to Install the Tee

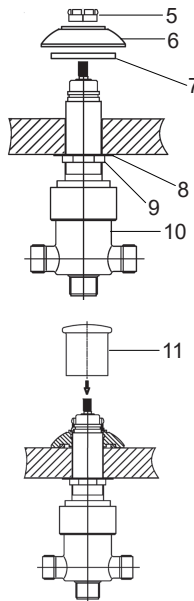
Put the washer(2) into the nut(3) of the tee(4). Then connect the tee(4) to one side body(1) of the deck-mount bath faucet as the figure shown.



How to Install the Diverter Body

Remove the parts from the diverter body according to the following order: ratchet ring(5), escutcheon(6) and washer(7). Insert the diverter body(10) with washer(8) and nut(9) through mounting hole from underside of the deck. Reinstall the parts according to the following order: washer(7), escutcheon(6) and ratchet ring(5). Tighten the escutcheon, then wrench tighten the nut(9).

Press the handle(11) to the diverter body.

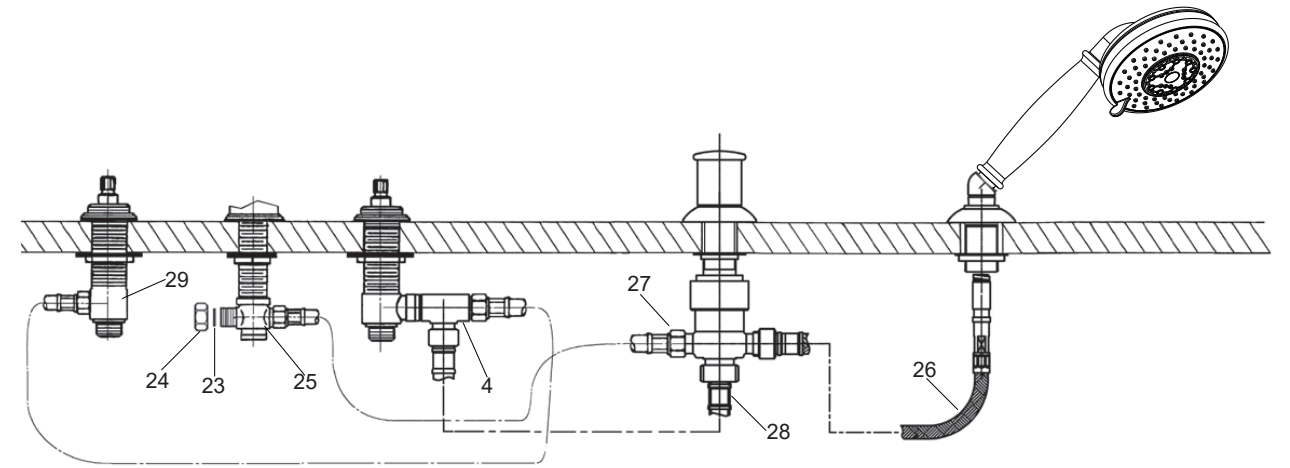
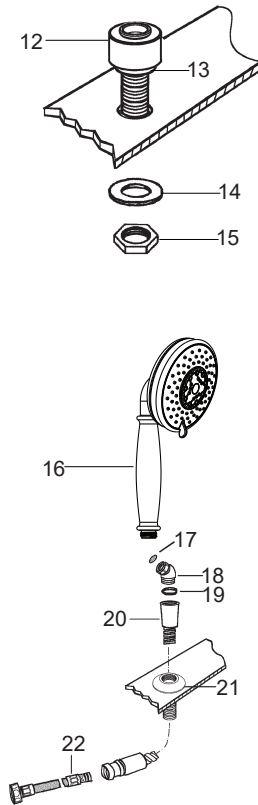


How to Install the Handspray

Remove the nut(15), washer(14). Put the rubber washer(13) into the groove of the escutcheon(12). Place the shank into the hole. From underside, install the washer(14) and nut(15) to the shank. Then tighten the nut firmly.

Slide the hose(20)(length: 2m) through the hose guide(21), and attach to the hose(22)(length: 0.6m).

Put the washer(17) into the elbow assembly(18), and then thread them to handspray(16). Connect the hose and the elbow assembly with the washer(19).



Put the fiber washer(23) into the plug(24), Tighten the plug to one of the ports of the center tee(25) for the spout.

Connect one side body(29) and the tee(4) on another side body with washers and one of the hoses provided with the deck-mount faucet (Remove another hose and put it away). Connect the tee(4) and bottom port of the diverter with hose(28)(length:1m) and washers. Tighten the connection hose(26) to the end (with note label) with washer. Connect the center tee(25) and another end of the diverter with hose(27)(length:1m) and washers.

To ensure the water flows smoothly and the handspray can be drawn out easily, the hose should avoid kinking, twisting. To ease installation, you may back off center tee of the spout up to 180 degree.

Note: Hoses should be only used where indicated.

INSTALLATION CHECKOUT

Ensure all coupling nuts are tight. Turn on main water supply and check for leaks. Repair as needed.

CLEANING INSTRUCTIONS

All Finishes: Clean the finish with mild soap and warm water. Wipe entire surface completely dry with clean soft cloth. Many cleaners may contain chemicals, such as ammonia, chlorine, toilet cleaner etc. which could adversely affect the finish and are not recommended for cleaning.

Do not use abrasive cleaners or solvents on Kohler faucets and fittings.