

37273T

花洒托架带软管

#### 安装之前

所有的资料是按最新出版的产品资料编写而成。科勒公司保留任何时候不经通知即可改变产品特性、包装或产品可供类型的权利。

说明书包括重要的安装、保养及清洁方面的内容，请把这些资料交给用户阅读。

#### 注意事项：

1. 一定要先彻底冲洗供水管以清除管道中的杂质。
2. 请特别注意此产品须远离加热器，否则可能损坏产品，甚至对使用者造成伤害。

#### BEFORE YOU BEGIN

All information is based on the latest product information available at the time of publication. Kohler Co. reserves the right to make changes in product characteristics, packaging, or availability at any time without notice.

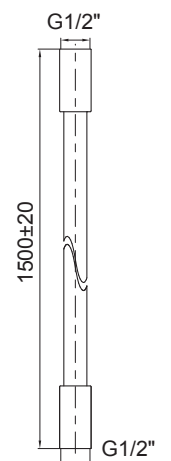
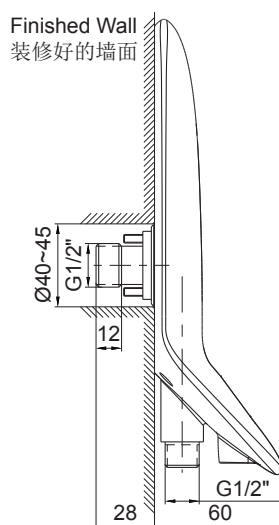
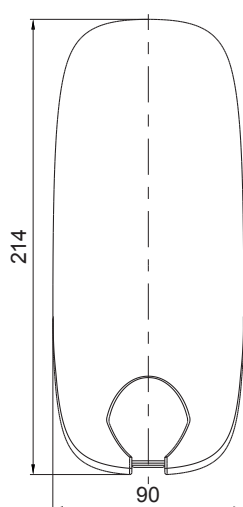
Please leave these instructions for the consumer. They contain important information.

#### NOTES:

1. Flush the water supply pipes thoroughly to remove debris.
2. Please keep this product away from heater, or it may become damaged and cause injury to the user.

#### 安装尺寸

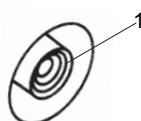
#### ROUGH-IN DIMENSIONS



#### 安装步骤

为使安装顺利，G1/2"内螺纹管道配件(1)应已装好。

**注意：**墙孔内需作防水处理。

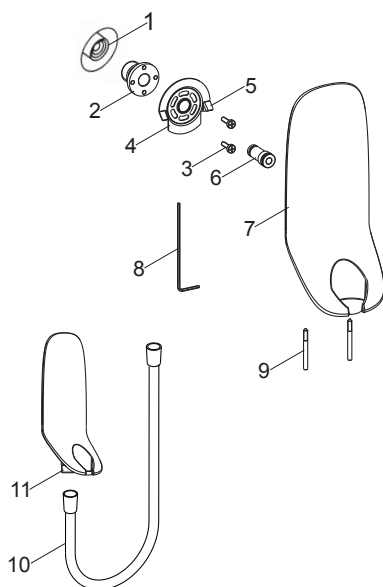


#### INSTALLATION

To perform installation, installer must provide G1/2" female supply fitting(1).

**NOTE:** The hole on the wall should make waterproof treatment.

在接头(2)的G1/2"螺纹上缠绕足以密封的密封胶带或涂合适的密封胶。用8mm六角扳手将接头旋紧到G1/2"内螺纹管道配件上，且使其低于墙面2~12mm。用螺钉(3)将底座(4)装到接头上，使底座紧贴墙面，且两凸起(5)水平。将接头组件(6)装入底座。将托架组件(7)套在接头组件上，紧贴墙壁且保持两个螺孔铅垂向下。用六角扳手(8)锁紧螺钉(9)，固定托架组件。



去掉软管(10)两端接头的保护套。用软管连接接头(11)。

Apply tape or thread sealant to G1/2" threads of the connector(2). Tighten the connector onto the G1/2" female supply fitting, and below the finished wall 2~12mm. Install the fixed board(4) onto the connector with the screws(3) so that the fixed board is against the finished wall, and keep two bulges(5) horizontally. Install the connector(6) into the fixed board. Slide the bracket kit(7) onto the connector kit against the finished wall, and keep two screw holes downwards. Tighten the screws(9) with the hex wrench(8) to secure the bracket kit.

Remove the guards on the outlet connectors of the hose(10). Connect the connector(11) with the hose.

## 清洗说明

适用于所有加工处理过的表面：以中性肥皂水清洗镀层表面，再以干净的软布彻底擦干整个表面，许多清洁剂，比如氨水、去污粉及洁厕灵等，会对电镀表面造成伤害，切忌使用。

有磨损性的清洁用具或清洁剂也不可使用于科勒牌的水龙头及其配件上。

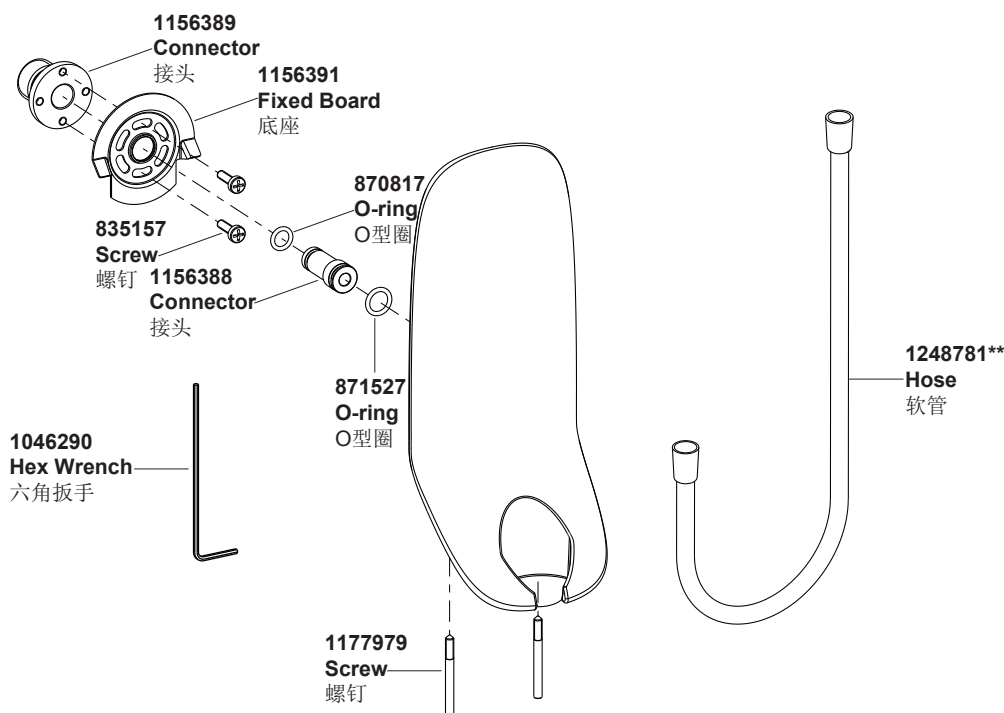
## CLEANING INSTRUCTIONS

All Finishes: Clean the finish with mild soap and warm water. Wipe entire surface completely dry with clean soft cloth. Many cleaners may contain chemicals, such as ammonia, chlorine, toilet cleaner etc. which could adversely affect the finish and are not recommended for cleaning.

Do not use abrasive cleaners or solvents on Kohler faucets and fittings.

## 零件图

## SERVICE PARTS



\*\*订购时请说明颜色编号

\*\*Color code must be specified when ordering