

### 14714T 墙出水花洒连接件及软管

#### 安装之前

所有的资料是按最新出版的产品资料编写而成。科勒公司保留任何时候不经通知即可改变产品特性、包装或产品可供类型的权利。

说明书包括重要的安装、保养及清洁方面的内容，请把这些资料交给用户阅读。

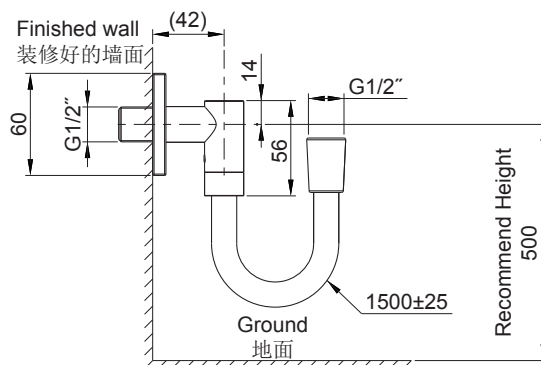
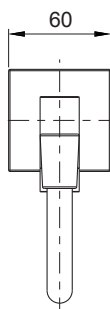
#### BEFORE YOU BEGIN

All information is based on the latest product information available at the time of publication. Kohler Co. reserves the right to make changes in product characteristics, packaging, or availability at any time without notice.

Please leave these instructions for the consumer. They contain important information.

#### 安装尺寸

#### ROUGH-IN DIMENSIONS



#### 安装步骤

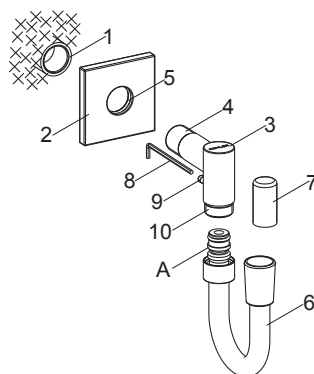
#### INSTALLATION

##### 如何安装花洒连接件

安装花洒连接件之前，G1/2"内螺纹出水管(1)已装好。

**注意：**出水管要垂直并且不能突出装修好的墙面，但是低于墙面不超过5mm。

将装饰盖(2)套入弯头(3)的长端(4)(**注意：**勿将O型圈(5)挤出)。在弯头长端螺纹上缠绕足以密封的密封胶带或涂合适的密封膏。将弯头旋紧到出水管上，调整弯头使其另一螺纹端朝下。后推装饰盖至与墙面接触。



##### How to Install the Elbow

The G1/2" female outlet pipe(1) is installed before installing the elbow.

**NOTE:** The outlet pipe should not be beyond but below the finished wall within 5mm, and be vertical with finished wall as well.

Slide the escutcheon(2) onto the long end(4) of the elbow(3) (**NOTE:** Don't squeeze out the o-ring(5).). Apply tape or thread sealant to the threads on the long end of the elbow. Tighten the elbow to the outlet pipe. Adjust and make the other thread end of the elbow faces down. Push the escutcheon against the finished wall.

去掉软管(6)A端保护套(7)。用六角扳手(8)旋松弯头内螺钉(9)。将软管A端与弯头短端(10)螺纹连接并拧紧。用六角扳手锁紧螺钉。

打开水源冲水约一分钟以清除杂质。

Remove the protector(7) from the end A of the hose(6). Loosen the screw(9) of the elbow with the hex wrench(8). Tighten the end A to the short thread(10) of the elbow. Tighten the screw with the hex wrench.

Flush both water supplies through the supply elbow for one minute to remove debris.

## 清洗说明

适用于所有加工处理过的表面：以中性肥皂水清洗镀层表面，再以干净的软布彻底擦干整个表面，许多清洁剂，比如氨水、去污粉及洁厕灵等，会对电镀表面造成伤害，切忌使用。

有磨损性的清洁用具或清洁剂也不可使用于科勒牌的水龙头及其配件上。

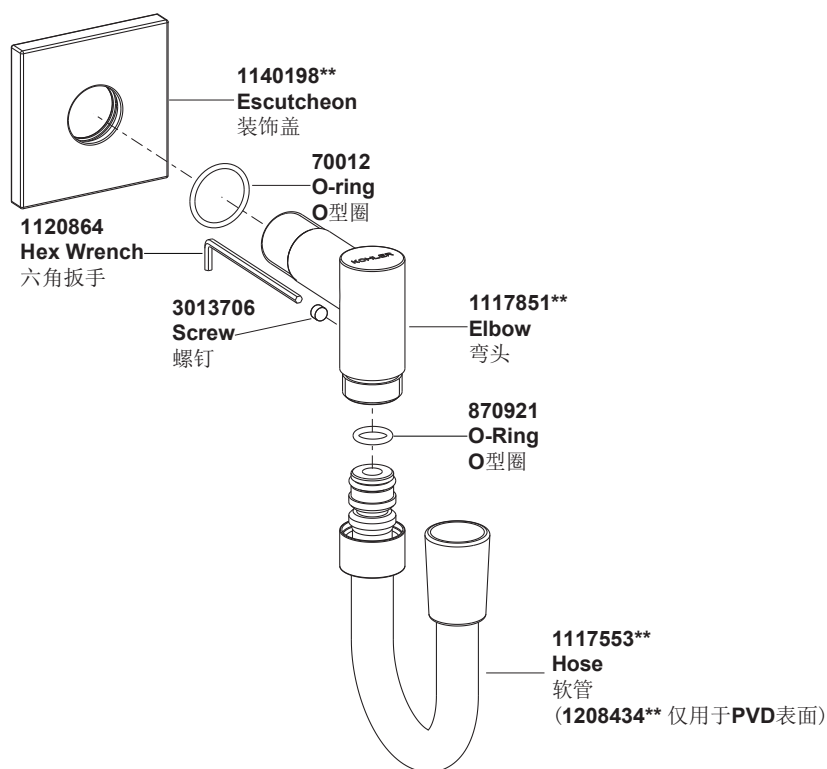
## CLEANING INSTRUCTIONS

All Finishes: Clean the finish with mild soap and warm water. Wipe entire surface completely dry with clean soft cloth. Many cleaners may contain chemicals, such as ammonia, chlorine, toilet cleaner etc. which could adversely affect the finish and are not recommended for cleaning.

Do not use abrasive cleaners or solvents on Kohler faucets and fittings.

## 零件图

## SERVICE PARTS



\*\*订购时请说明颜色编号

\*\*Color code must be specified when ordering