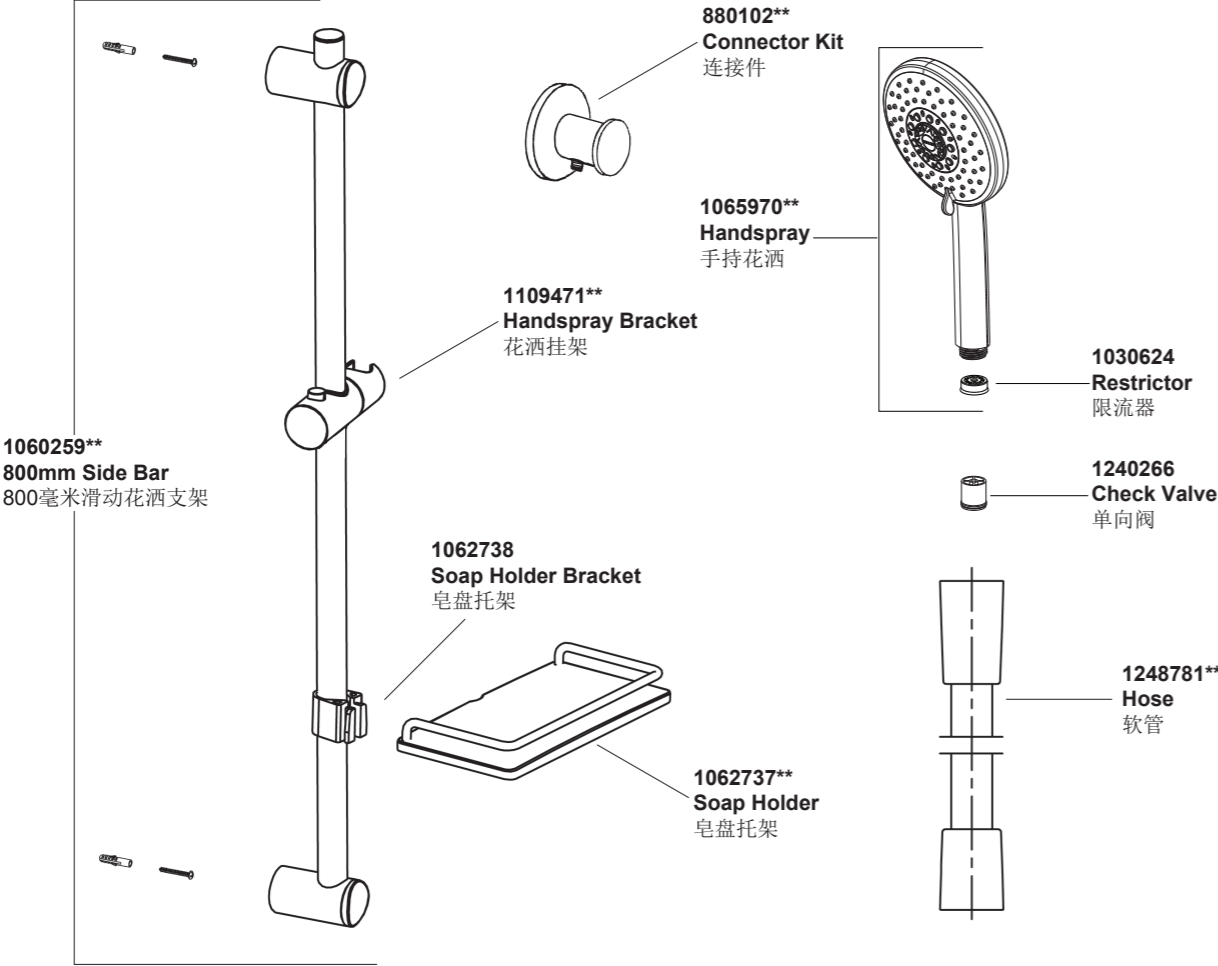


Slide Bar with Handspray  
滑动花洒支架及花洒

18468T 滑动花洒支架及花洒



\*\*订购时请说明颜色编号  
\*\*Color code must be specified when ordering

Slide Bar with Handspray  
滑动花洒支架及花洒

18468T 滑动花洒支架及花洒

安装之前

所有的资料是按最新出版的产品资料编写而成。科勒公司保留任何时候不经通知即可改变产品特性、包装或产品可供类型的权利。

说明书包括重要的安装、保养及清洁方面的内容，请把这些资料交给用户阅读。

注意事项：

1. 一定要先彻底冲洗供水管以清除管道中的杂质。
2. 遵守当地管路安装条例。
3. 切断主供水源。
4. 本产品需和龙头(单独购买)一起使用。

5. 花洒最高工作压力：0.5Mpa(5bar)。水压超过0.5Mpa(5bar)须安装减压阀。花洒最高工作温度及环境温度：60°C。请特别注意花洒须远离加热器，否则可能损坏花洒，甚至对使用者造成伤害。

BEFORE YOU BEGIN

All information is based on the latest product information available at the time of publication. Kohler Co. reserves the right to make changes in product characteristics, packaging, or availability at any time without notice.

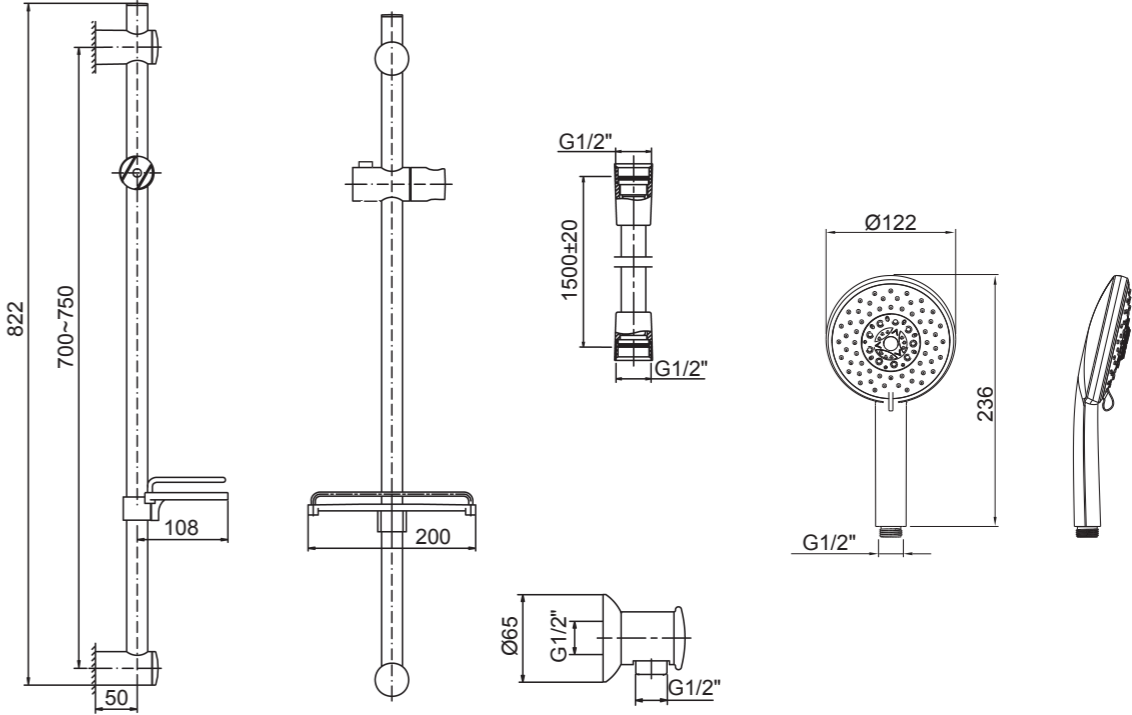
Please leave these instructions for the consumer. They contain important information.

NOTES:

1. Flush the water supply pipes thoroughly to remove debris.
2. Observe all local plumbing and building codes.
3. Shut off the main water supply.
4. The product must be installed in conjunction with a faucet (purchased separately).
5. The highest working pressure for showerhead & handspray is 0.5 Mpa (5 bar). If it exceeds 0.5Mpa (5 bar), a pressure reducer is needed. The highest water and environment temperature is 60°C. Please keep showerhead & handspray away from heater, or maybe damage it and hurt user.

安装尺寸

ROUGH-IN DIMENSIONS

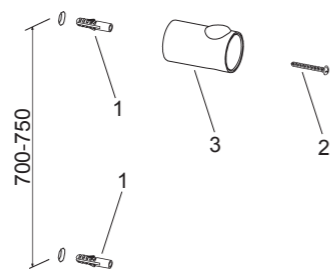


安装步骤

INSTALLATION

如何安装滑动花洒支架

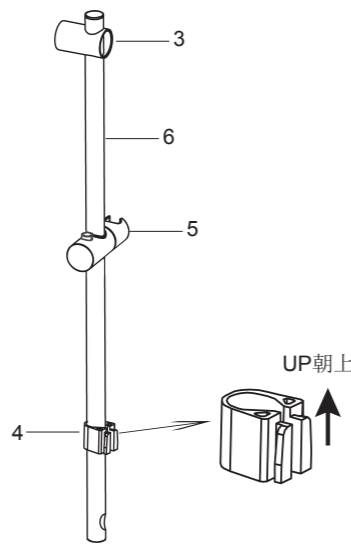
根据标注的尺寸及胀塞直径，在墙面适当高度打两个孔，将胀塞(1)分别装入孔中。然后用短螺钉(2)将支架(3)固定于墙上。



How to Install the Slide Bar

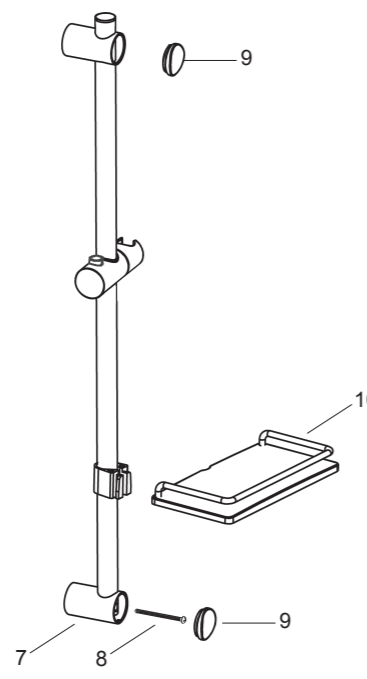
Drill two holes at the proper height in the wall according to the recommended dimension and plugs' diameter. Hammer plugs(1) into the holes. Secure the bracket(3) on the wall with the shorter screw(2).

如图，将皂盘托架(4)，花洒挂架(5)装到支杆(6)上。再将支杆穿入支架(3)。



Slide soap holder bracket(4) and handspray bracket(5) onto the bar(6) as illustrated. Slide the bar into the bracket(3).

将支架(7)插入支杆，调整位置，用长螺钉(8)将其固定于墙上。塞紧支架盖(9)。将皂盘(10)安装到皂盘托架上。



Place bracket(7) into bar, adjust it, secure it on the wall with the longer screw(8). Press on covers(9). Put the soap holder(10) onto the soap holder bracket.

如何安装手持花洒

将单向阀(18)按图示方向装入手持花洒(13)。如需要，将限流器(17)塞入手持花洒进水口。

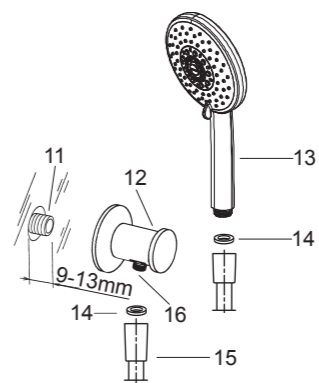
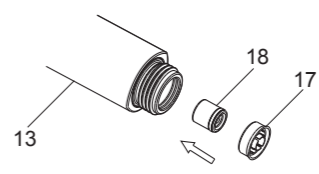
**注意：**单向阀带O型圈一端必须朝外(如图所示方向)。

安装G1/2"接管(11，客户自备)，接管露出墙外的长度应为9至13mm。在接口螺纹上缠绕足以密封的密封胶带或涂适合的密封胶，安装连接件(12)，调整位置使螺纹出口(16)朝向正下方。

用垫片(14)连接软管(15)和连接件(12)或水龙头出水口、软管和花洒(13)。锁紧所有衔接螺母。

若由于供水压力过低导致花洒流量不足，可旋下花洒，取出整流器(17)。再装回花洒。

**注意：**若水压高于3bar(0.3MPa)不能取出整流器，否则将损坏花洒。



How to Install the Slide Bar

Put the check valve(18) into the handspray(13) inlet. Put the restrictor(17) into the handspray inlet if needed.

**Note:** Keep the O-ring of the check valve outward.

Install the G1/2" nipple(11,not provided) for the connector(12) so it extends 9~13mm beyond the finished wall. Apply tape or thread sealant to the nipple threads, and install the connector kit(12). Adjust the position and make sure the thread spout(16) faces down.

Put the washer(14) between hose(15) and connector kit(12) or shower outlet, hose and handspray(13). Tighten all the connectors.

If the water pressure is too low to meet customer's requirement, unscrew handspray, and take out regulator(17). Reinstall handspray.

**Note:** If working pressure is higher than 3bar(0.3MPa), regulator should not be taken out, or the handspray will be damaged.

安装结果检查

INSTALLATION CHECKOUT

确定所有衔接螺母都已锁紧。开启主水源，检查是否有漏水。如有漏水，修理之。

Ensure that all coupling nuts are tightened. Turn on the main water supply, and check for leaks. Repair as needed.

清洗说明

CLEANING INSTRUCTIONS

适用于所有加工处理过的表面：以中性肥皂温水清洗镀层表面，再以干净的软布彻底擦干整个表面。许多清洁剂，比如氨水、去污粉及洁厕灵等，会对电镀表面造成伤害而不宜使用。

All Finishes: Clean the finish with mild soap and warm water. Wipe entire surface completely dry with clean soft cloth. Many cleaners may contain chemicals, such as ammonia, chlorine, toilet cleaner etc. which could adversely affect the finish and are not recommended for cleaning.

有磨损性的清洁用具或清洁剂也不可使用于科勒牌的水龙头及其配件上。

Do not use abrasive cleaners or solvents on Kohler faucets and fittings.