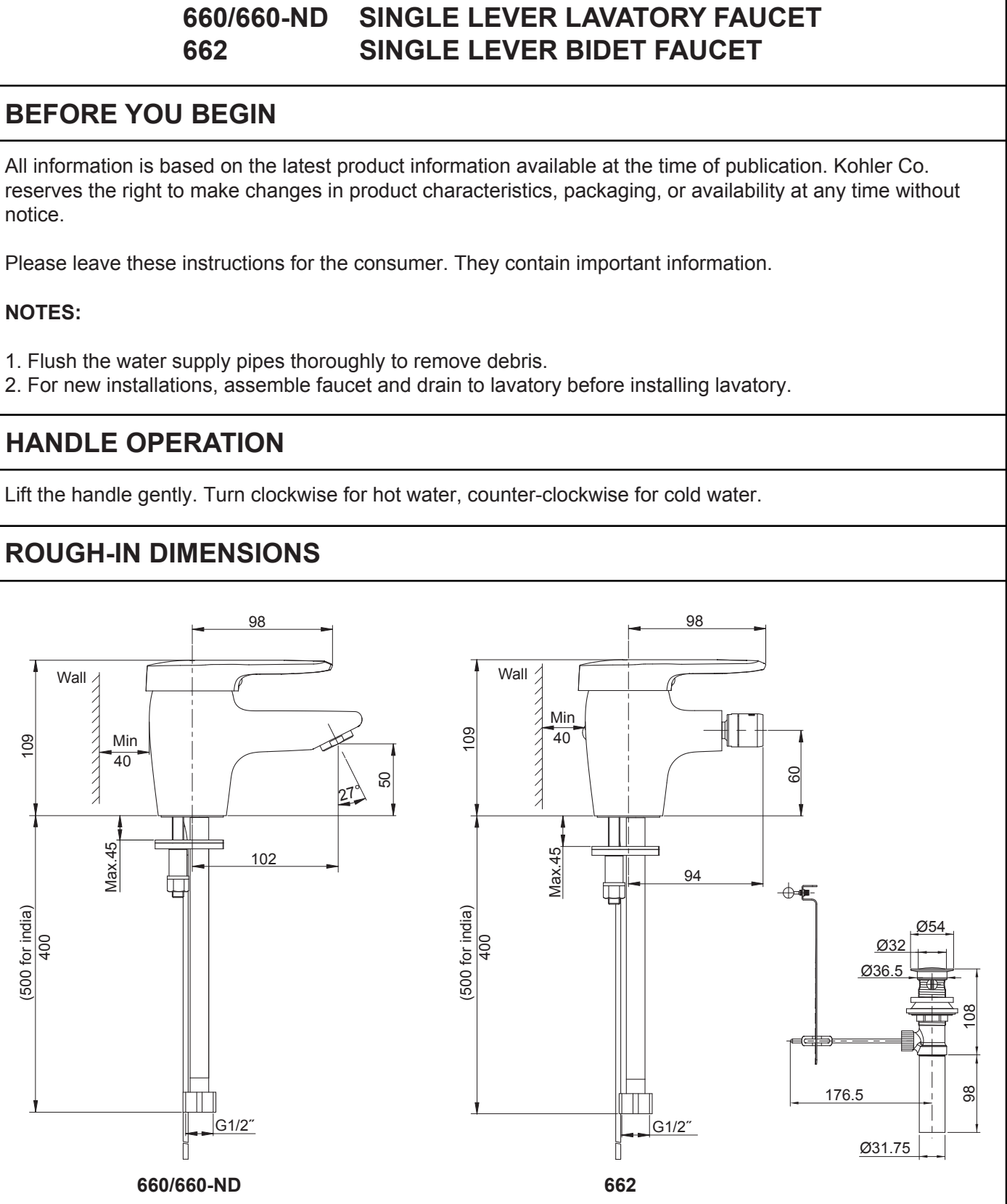


**Color code must be specified when ordering



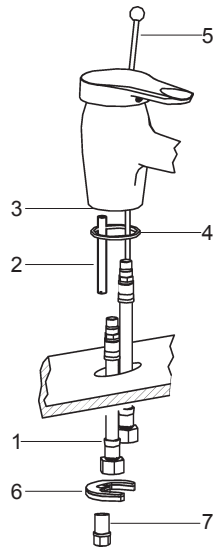
INSTALLATION

How to Install the Faucet

Install the mountings stud(2) into the faucet body base(3). Insert lift rod(5)(Not for **660-ND**) into hole at rear of body assembly. Slide O-ring(4) into groove on body assembly. Insert the flexible supply hoses(1) into the hole from under the lavatory and install the flexible supply hoses into the faucet holes. Tighten it by hand.

From underside of lavatory, place bracket(6) and nut(7) onto mounting stud(2). Position faucet so that lift rod(5) is toward the back. Tighten nut to secure faucet to lavatory.

Attach the hoses to water supplies. When facing front of faucet, the left hose is hot water, the right hose is cold water.

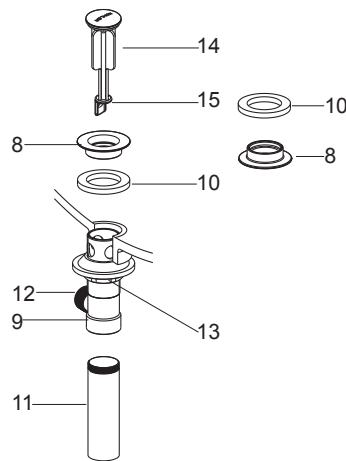


How to Install the Drain (Not for 660-ND)

Remove stopper(14), flange(8) and washer(10) from drain body(9). Take off the tailpiece(11). Apply thread tape to tailpiece and install the tailpiece to drain body. Insert drain body kit into the lavatory from underside, and make sure the drain lever hole(12) facing to the back of the lavatory. Screw the flange with washer into the drain body. Tighten the locknut(13) by hand from the underside of the fixture.

NOTE: If needed, apply a ring of plumbers putty around the underside of the drain flange(8), instead of using washer(10).

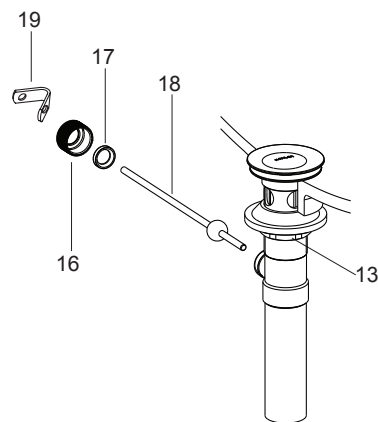
Place stopper(14) into drain body aligning the flat side of stopper hole(15) with the drain lever hole.



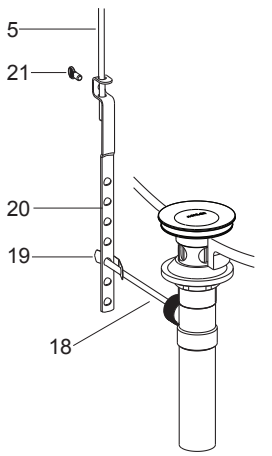
Remove the retaining nut(16). Fit the plastic washer(17) and retaining nut onto the ball lever(18). Insert the ball lever assembly into the drain lever hole and through the stopper hole. Tighten the retaining nut.

Be sure that the ball lever(18) points to the back of the lavatory, tighten the locknut(13) on the drain body by wrench.

NOTE: Do not reposition the drain if plumbers putty applied after the locknut is tightened, or you may break the putty seal. Wipe away excess plumbers putty.



Assemble thumb screw(21) to link(20), and link onto ball lever(18) with 'V'-clip (19). Slide lift rod(5) into the hole in link. Push the ball lever down into the open position, and adjust the lift rod. Tighten thumb screw(21).

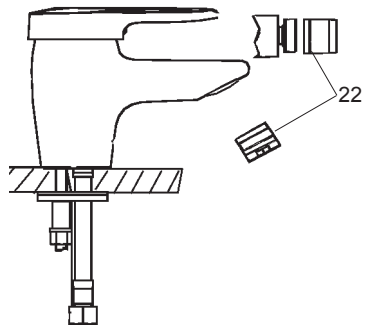


INSTALLATION CHECKOUT

Ensure that all connections are tight. Ensure that the handle is in the off position.

Open the drain. Turn on main water supply and check for leaks. Repair as required.

Remove aerator assembly(22). Turn the faucet handle on and run hot and cold water through spout for about one minute to remove any debris. Remove any debris from aerator assembly. Shut faucet off and reinstall areator assembly.



CLEANING INSTRUCTIONS

All Finishes: Clean the finish with mild soap and warm water. Wipe entire surface completely dry with clean soft cloth. Many cleaners may contain chemicals, such as ammonia, chlorine, toilet cleaner etc. which could adversely affect the finish and are not recommended for cleaning.

Do not use abrasive cleaners or solvents on Kohler faucets and fittings.