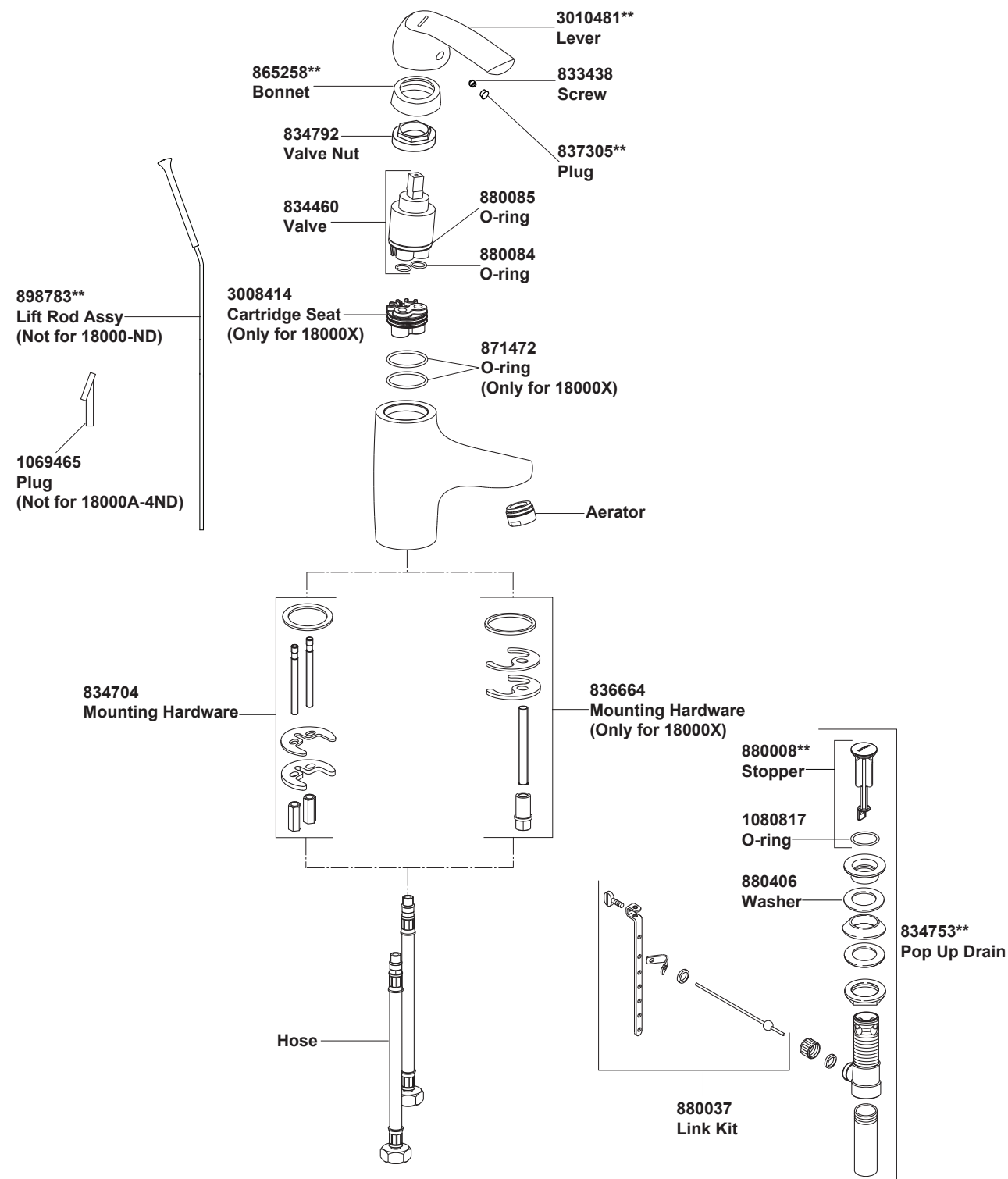


## 18000/18000-ND/18000A-4ND SINGLE LEVER LAVATORY FAUCET



	18000A-4ND	18000X	18000IN	Others
Hose	1054592	1024405	1024405	834754
Aerator	1031237**	834562**	834562**	834562**

**\*\*Color code must be specified when ordering**

## 18000/18000-ND/18000A-4ND SINGLE LEVER LAVATORY FAUCET

## BEFORE YOU BEGIN

All information is based on the latest product information available at the time of publication. Kohler Co. reserves the right to make changes in product characteristics, packaging, or availability at any time without notice.

Please leave these instructions for the consumer. They contain important information.

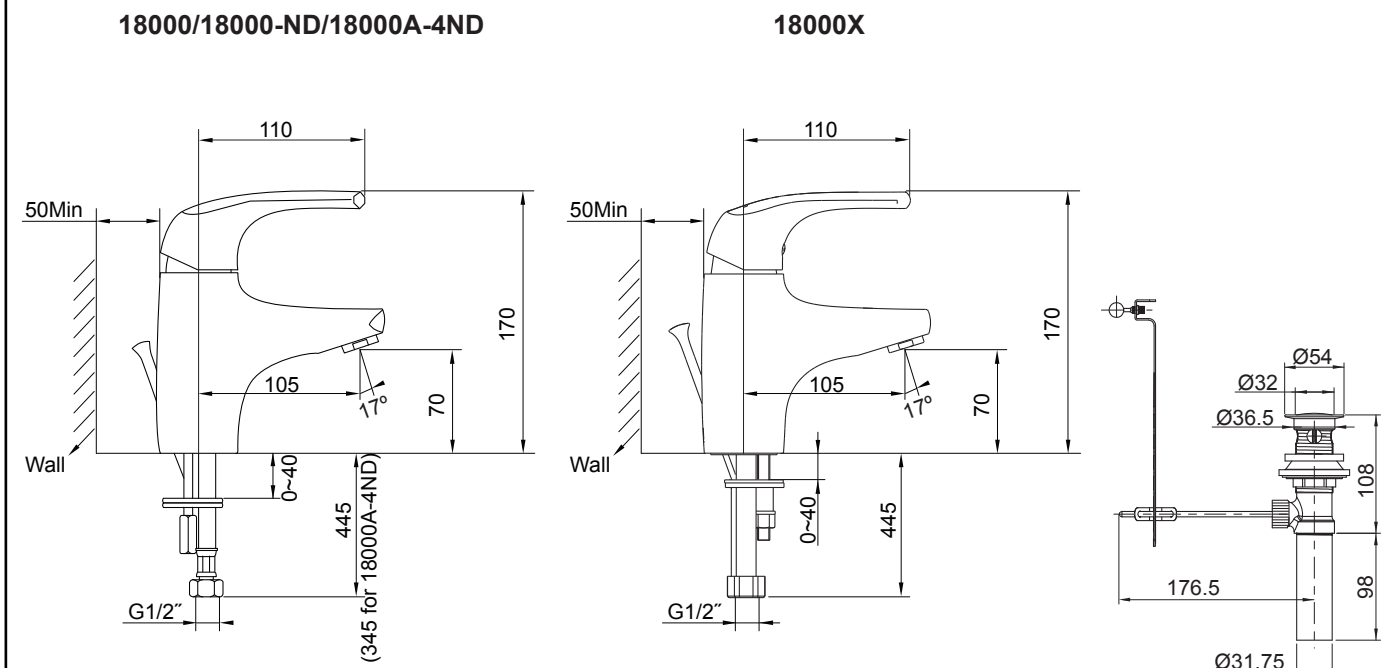
**NOTES:**

1. Flush the water supply pipes thoroughly to remove debris.
2. Inspect the supply tubing for damage. Replace as necessary.
3. Observe local plumbing codes.
4. If possible, install this faucet before installing the lavatory.

## HANDLE OPERATION

Lift the handle gently. Turn clockwise for hot water, counter-clockwise for cold water.

## ROUGH-IN DIMENSIONS



# INSTALLATION

## How to Install the Faucet

If needed to take off the hoses to repair, reinstall and tighten them by hand. Install mounting studs(2) into the faucet body base(3).

Slide the washer(4) over the flexible hoses and mounting studs, and into the groove on the bottom of faucet body.

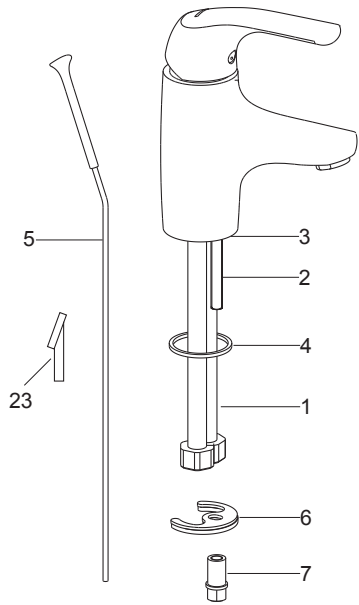
Insert the flexible hoses(1) into the hole of the lavatory. Position the faucet. From underside of the lavatory, fit the bracket(6) on the mounting studs with the rubber one first, and secure the faucet with the nut(7).

Insert the lift rod(5) into hole on the back of faucet(Not for 18000-ND).

### For 18000A-4ND

Insert the plug(23) into hole on the back of the faucet if not install pop-up drain.

Attach the hoses to water supplies. When facing front of faucet, the left hose is hot water, the right hose is cold water.



## How To Install The Drain

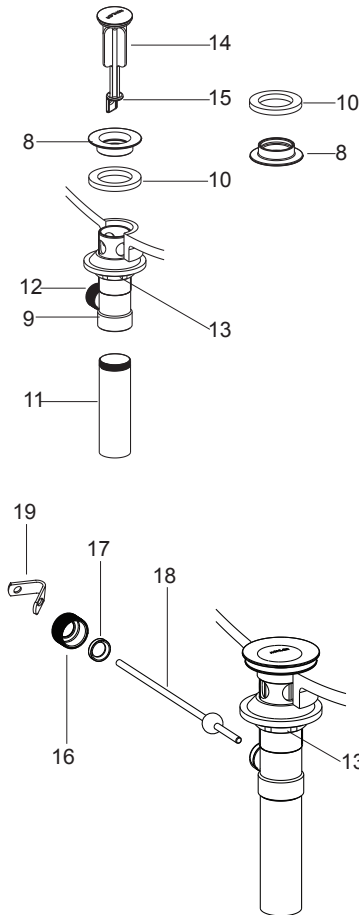
Remove stopper(14), flange(8) and washer(10) from drain body(9). Take off the tailpiece(11). Apply thread tape to tailpiece and install the tailpiece to drain body. Insert drain body kit into the lavatory from underside, and make sure the drain lever hole(12) facing to the back of the lavatory. Screw the flange with washer into the drain body. Tighten the locknut(13) by hand from the underside of the fixture.

**NOTE:** If needed, apply a ring of plumbers putty around the underside of the drain flange(8), instead of using washer(10).

Place stopper(14) into drain body aligning the flat side of stopper hole(15) with the drain lever hole.

Remove the retaining nut(16). Fit the plastic washer(17) and retaining nut onto the ball lever(18). Insert the ball lever assembly into the drain lever hole and through the stopper hole. Tighten the retaining nut.

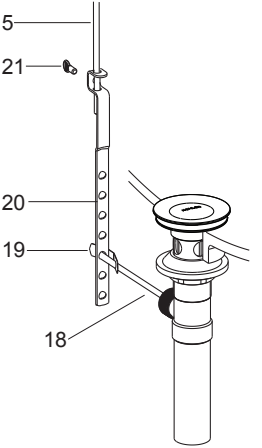
Be sure that the ball lever(18) points to the back of the lavatory, tighten the locknut(13) on the drain body by wrench.



**NOTE:** Do not reposition the drain if plumbers putty applied after the locknut is tightened, or you may break the putty seal. Wipe away excess plumbers putty.

Assemble thumb screw(21) to link(20), and link onto ball lever(18) with 'V'-clip (19). Slide lift rod(5) into the hole in link. Push the ball lever down into the open position, and adjust the lift rod(Make sure the height between lift rod and table is controlled within the range of 70~75mm).

Tighten thumb screw(21).

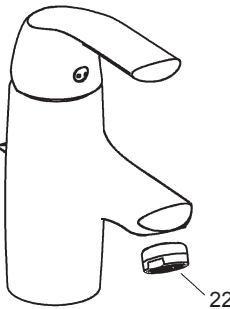


## INSTALLATION CHECKOUT

Ensure that all connections are tight. Ensure that the handle is in the off position.

Open the drain. Turn on main water supply and check for leaks. Repair as required.

Remove aerator assembly(22) by wrench. Turn the faucet handle on and run hot and cold water through spout for about one minute to remove any debris. Remove any debris from aerator assembly. Shut faucet off and reinstall aerator assembly.



## CLEANING INSTRUCTIONS

All Finishes: Clean the finish with mild soap and warm water. Wipe entire surface completely dry with clean soft cloth. Many cleaners may contain chemicals, such as ammonia, chlorine, toilet cleaner etc. which could adversely affect the finish and are not recommended for cleaning.

Do not use abrasive cleaners or solvents on Kohler faucets and fittings.