

Record your model number: \_\_\_\_\_

**⚠ WARNING: Risk of scalding.** High water temperature can cause severe burns. Set the valve water temperature at or below 120°F (49°C). Refer to the temperature adjustment instructions for the valve.

Follow all local plumbing and building codes.

**1A.** 1/4" (6 mm) Drill Bit

**1B.** Sealant Tape

**1C.** Sealant

**1D.** 6 mm Hex Wrench

**2A.** 30" (762 mm)

**2B.** 48" (1219 mm) Minimim

**6A.** Drill 1/4" (6 mm) holes at the marked locations.

**8A.** Apply sealant along the inside of the seal.

**9A.** Loosely thread both setscrews into the slidebar.

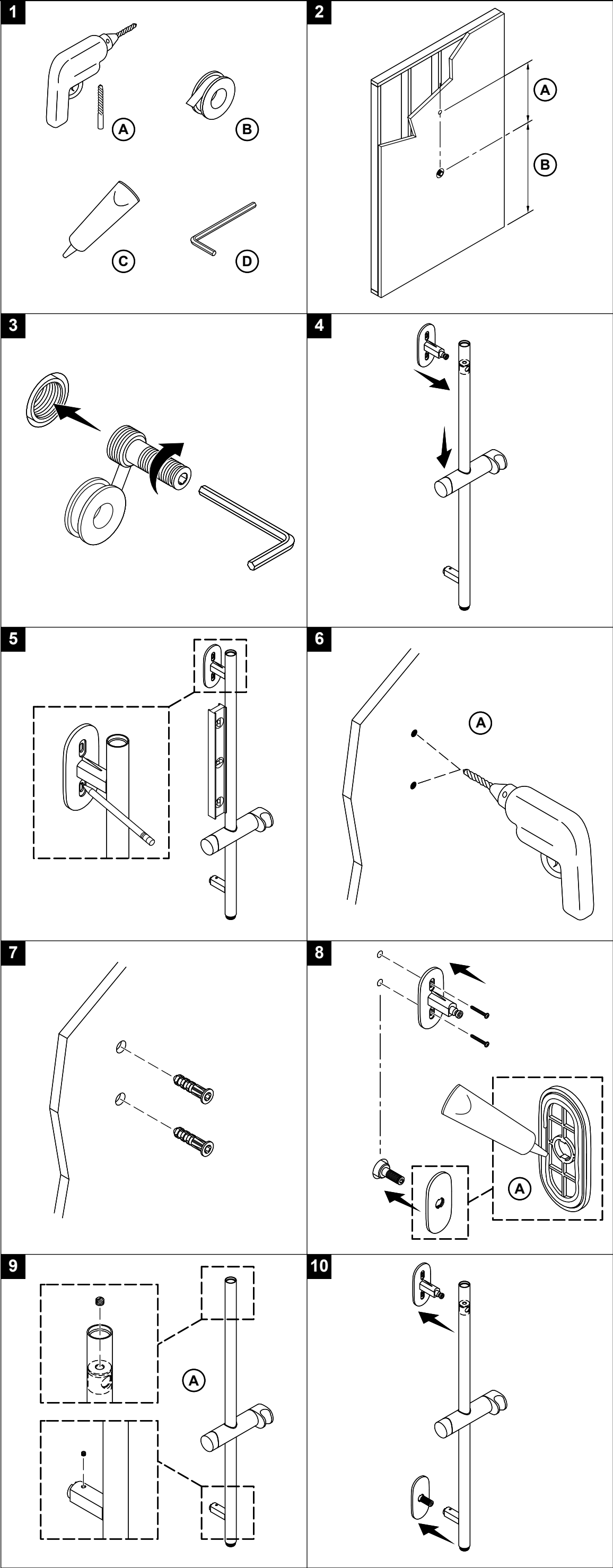
**13A.** Run water to flush debris.

**Need help?** Contact our Customer Service.

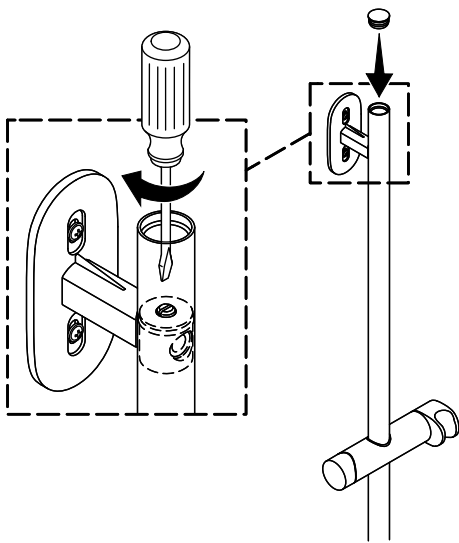
• Email: [technicalsupport@kohler.co.uk](mailto:technicalsupport@kohler.co.uk)

• 0800 001 4466

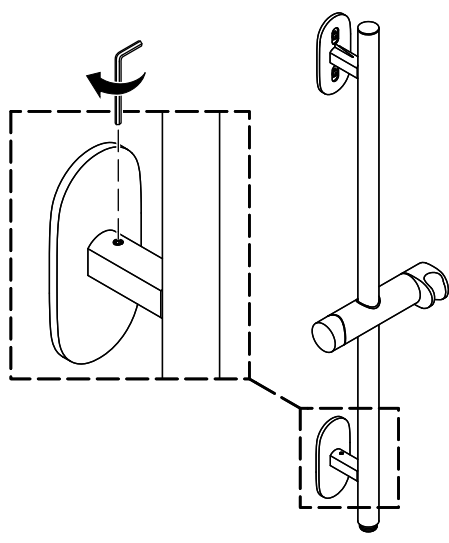
This product is covered under the **KOHLER® Showerheads, Shower Fittings, Bathroom Accessories, and Wastes Two-Year Limited Guarantee.** For a hardcopy of guarantee terms, contact Customer Service.



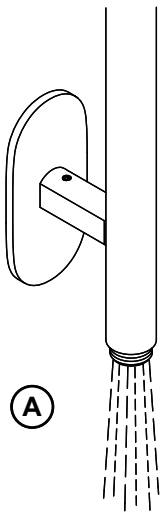
11



12



13



14

