

Features

- Tested and certified to California Title 24 standards and JA8 2016 requirements
- Includes mirror defogging
- Dimmable LED task lighting to 1%
- Compatible with most Triac/Phase-cut dimmers
- Energy efficient LED lighting: (measurements may vary)

| | |
|----------|------|
| Kelvin | 2700 |
| CRI | 90+ |
| R9 Value | 50+ |

Construction

- Anodized aluminum back frame
- Quality polished edge mirror
- Power cords installed for easy plugin installation
- Constructed for surface mounting
- Includes installation hardware

Codes/Standards Applicable

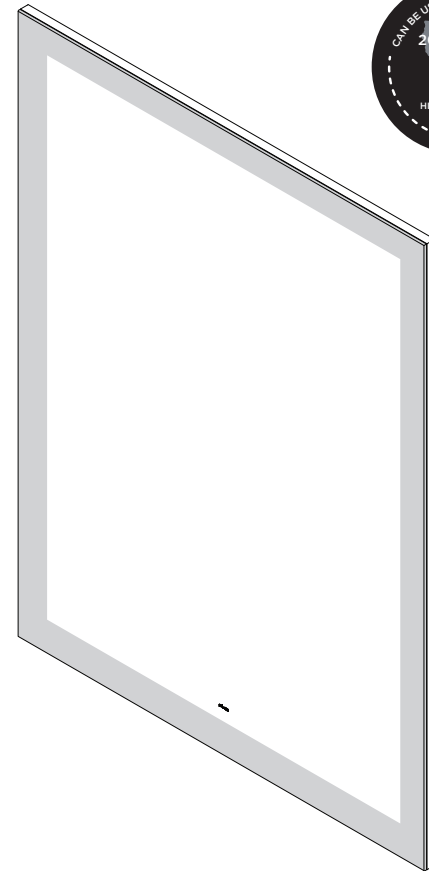
- Vitality Mirror is UL certified to:
- UL 962
 - CSA-C22.2, No. 12-82

Dimensions

Height: 40" (1016 mm)
 Width: 30" (762 mm)
 Depth: 1-3/4" (45 mm)
 Net Weight: 23 - 39 lbs

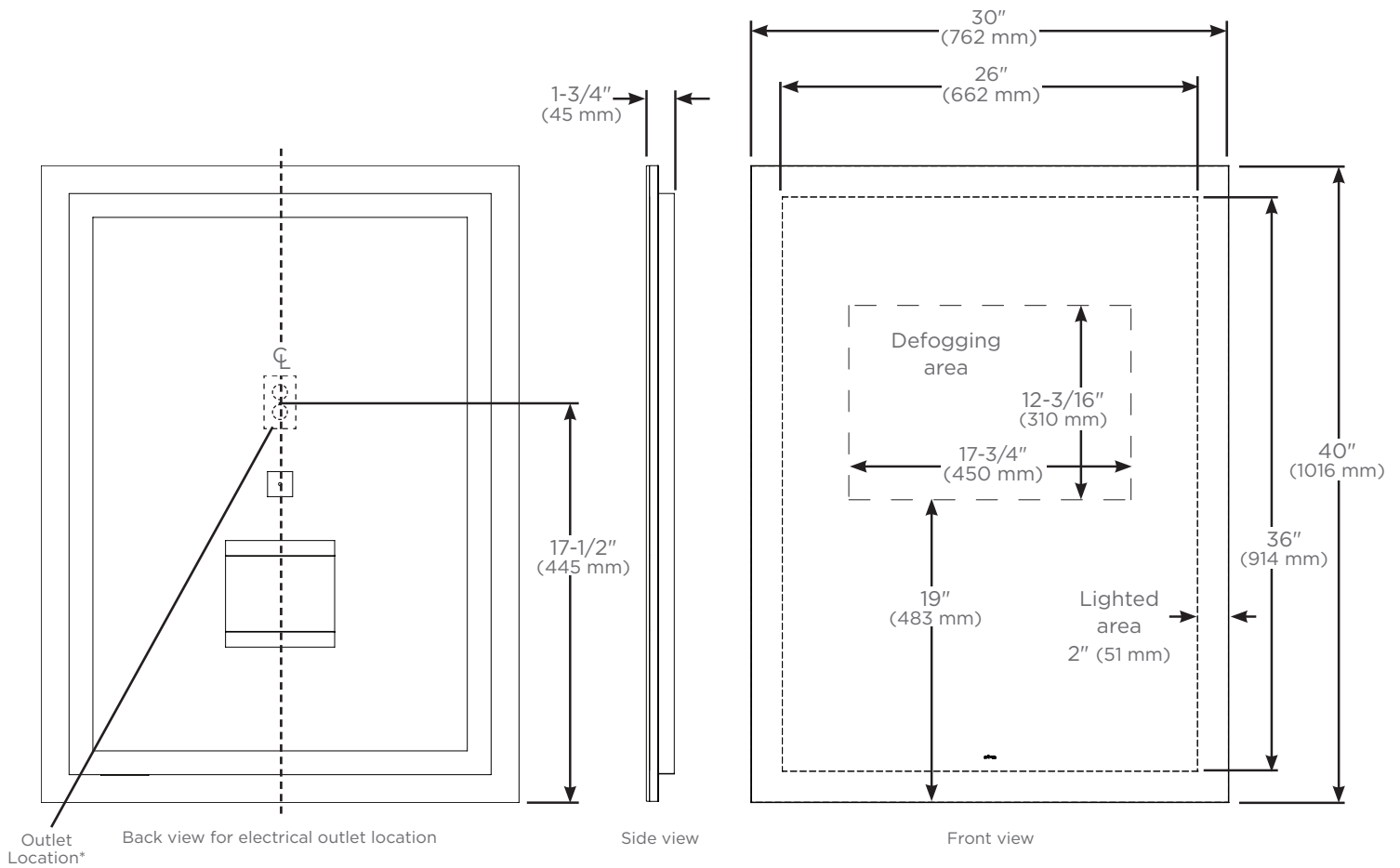
Electrical System

- 120 Vac 60Hz wall outlet location as shown in drawing



Model Number Key

| Vitality | Mirror | Width | Height | Shape | Light Pattern | Edge Type | Defogger | Color Temp | Options |
|----------|--------|-------|--------|---------------|---------------|---------------------|--------------|------------|------------------------------|
| Y | M | 30 | 40 | R = Rectangle | P = Perimeter | FP = Flat, Polished | D = Defogger | 3 = 2700K | K = Title 24 Compliant Model |



* See instructions 209-1277 for wiring and location
 For additional information regarding Title 24 contact customerservice@robern.com