

Installation Guide

Pedestal Bathroom Sinks

P72000, P72016, P72021,
P72030, P72034

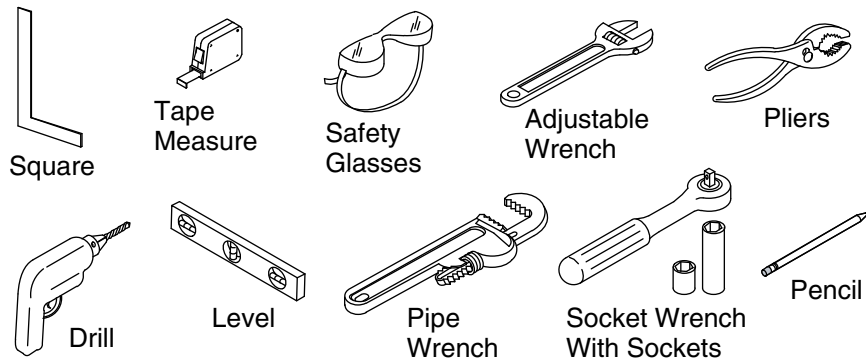
KALLISTA®

1008428-2-C

Thank You For Choosing Kallista

We appreciate your commitment to KALLISTA quality products. Please take a moment to review this manual before you install your KALLISTA product. If you encounter any installation or performance problems, please do not hesitate to contact us at the phone number listed on the back cover.

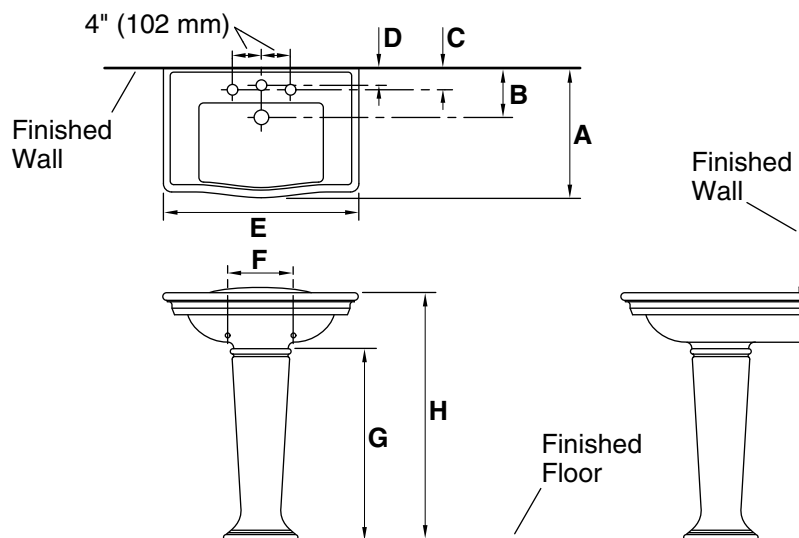
Tools and Materials



Before You Begin

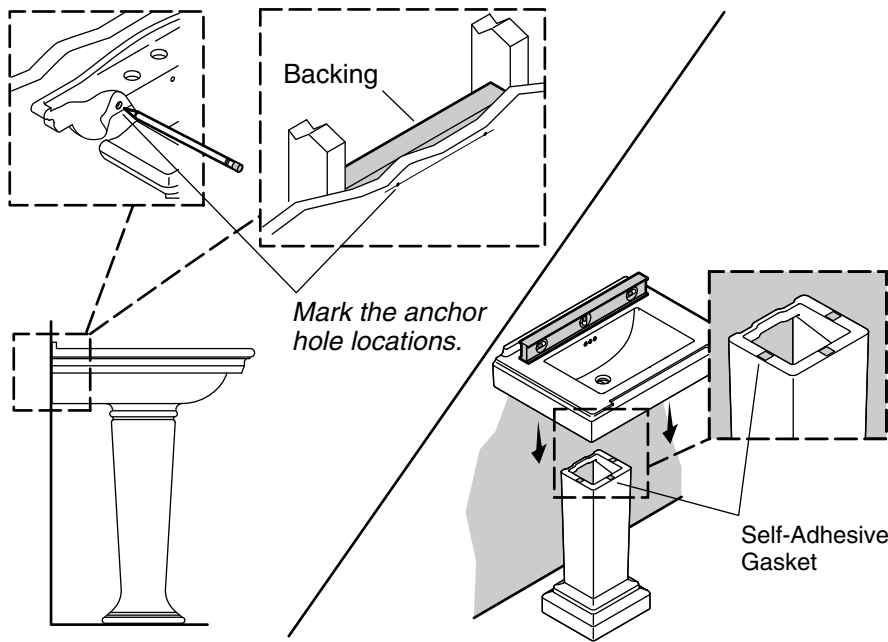
NOTICE: Risk of product damage. Do not overtighten connections. Overtightening may damage the product.

- ☐ Observe all local plumbing codes.
- ☐ Prior to installation, unpack the new sink and pedestal and inspect them for damage.
- ☐ Return the sink and pedestal to the protective cartons until you are ready to install.
- ☐ These instructions are for installing the sink to wood frame construction. For other installations, provide suitable bracing and fastening devices of sufficient size and strength.
- ☐ The walls and floor must be square, plumb, and level.
- ☐ Sink dimensions are nominal and conform to tolerances in ASME A112.19.9 standards for non-vitreous ceramic plumbing fixtures.
- ☐ The appearance of your pedestal sink may differ from what is shown in these instructions, however, the installation procedure is the same.
- ☐ KALLISTA reserves the right to make revisions in the design of products without notice, as specified in the Price Book.



	P72000	P72016	P72021	P72030	P72034
A	19-3/4" (502 mm)	18-5/16" (465 mm)	17" (432 mm)	21-1/2" (546 mm)	22" (559 mm)
B	7" (178 mm)	8" (203 mm)	8" (203 mm)	8-3/4" (222 mm)	8-1/2" (216 mm)
C	3-3/8" (86 mm)	3-1/2" (89 mm)	2-5/8" (67 mm)		
D	2-3/4" (70 mm)	2-5/8" (67 mm)	2" (51 mm)	2-1/2" (64 mm)	3-1/16" (78 mm)
E	25-3/4" (654 mm)	27" (686 mm)	24" (610 mm)	30" (762 mm)	32" (813 mm)
F		8-3/4" (222 mm)	8-3/4" (222 mm)	10" (254 mm)	
G	26" (660 mm)	27" (686 mm)	27" (686 mm)	26" (660 mm)	
H	32-1/2" (826 mm)	34-3/16" (868 mm)	33-3/16" (843 mm)	35" (889 mm)	35-1/4" (895 mm)

Roughing-In



1. Preparation

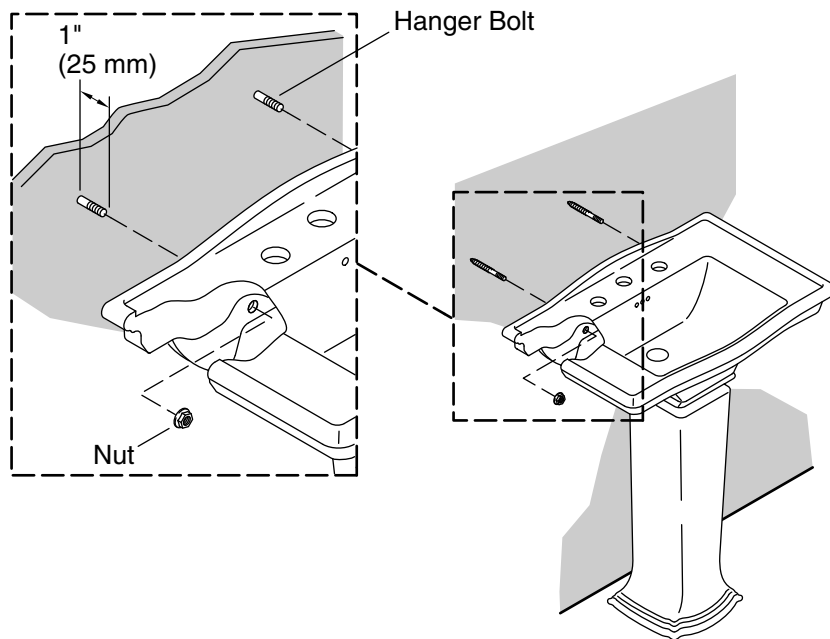
- Install the water supplies and drain piping. Install the supply stops so the handles will not touch the pedestal when fully open.
- Install sufficient backing behind the finished wall to provide secure material for the anchoring devices.
- Place the pedestal in the approximate location.

NOTE: The sink **must** be supported by the pedestal.

- Carefully lift the sink into place on the pedestal, and slowly move the pedestal as required to ensure proper fit.

NOTE: Self-adhesive gaskets are not supplied with all pedestal sinks.

- To level the sink, apply self-adhesive gaskets as needed where the pedestal contacts the sink.
- Locate the two sink anchoring holes, and mark the hole locations on the finished wall.
- Carefully remove the sink from the pedestal and set aside. Move the pedestal from the area.



2. Install the Sink

- ❑ **For wood frame installations,** drill 1/4" (6 mm) mounting holes at the marked locations on the finished wall.
- ❑ **For tile or masonry wall installations,** anchors (provided) are required. Drill 1/2" (13 mm) mounting holes at the marked locations on the finished wall and insert the anchors.
- ❑ Install hanger bolts (provided) in the wall so they extend 1" (25 mm) beyond the finished wall.
- ❑ Install the faucet and drain to the sink according to the manufacturer's instructions.
- ❑ Position the pedestal on the floor.
- ❑ Carefully set the sink on the pedestal so the hanger bolts extend through the sink anchoring holes.
- ❑ Position the sink as desired.
- ❑ Install the nuts (provided) to the hanger bolts. Level the sink, and carefully tighten the nuts until secure. Do not overtighten.

Install the Sink (cont.)

- ❑ Connect and tighten the trap to the drain. Complete the water supply connections to the faucet according to the faucet manufacturer's instructions.
- ❑ Run water into the sink and check all connections for leaks.
- ❑ **Optional:** Apply silicone sealant around the pedestal foot to stabilize.

1008428-2-**C**

USA/Canada: 1-888-4-KALLISTA

Fax: 1-888-272-3094

kallista.com

KALLISTA.

©2012 KALLISTA

1008428-2-C