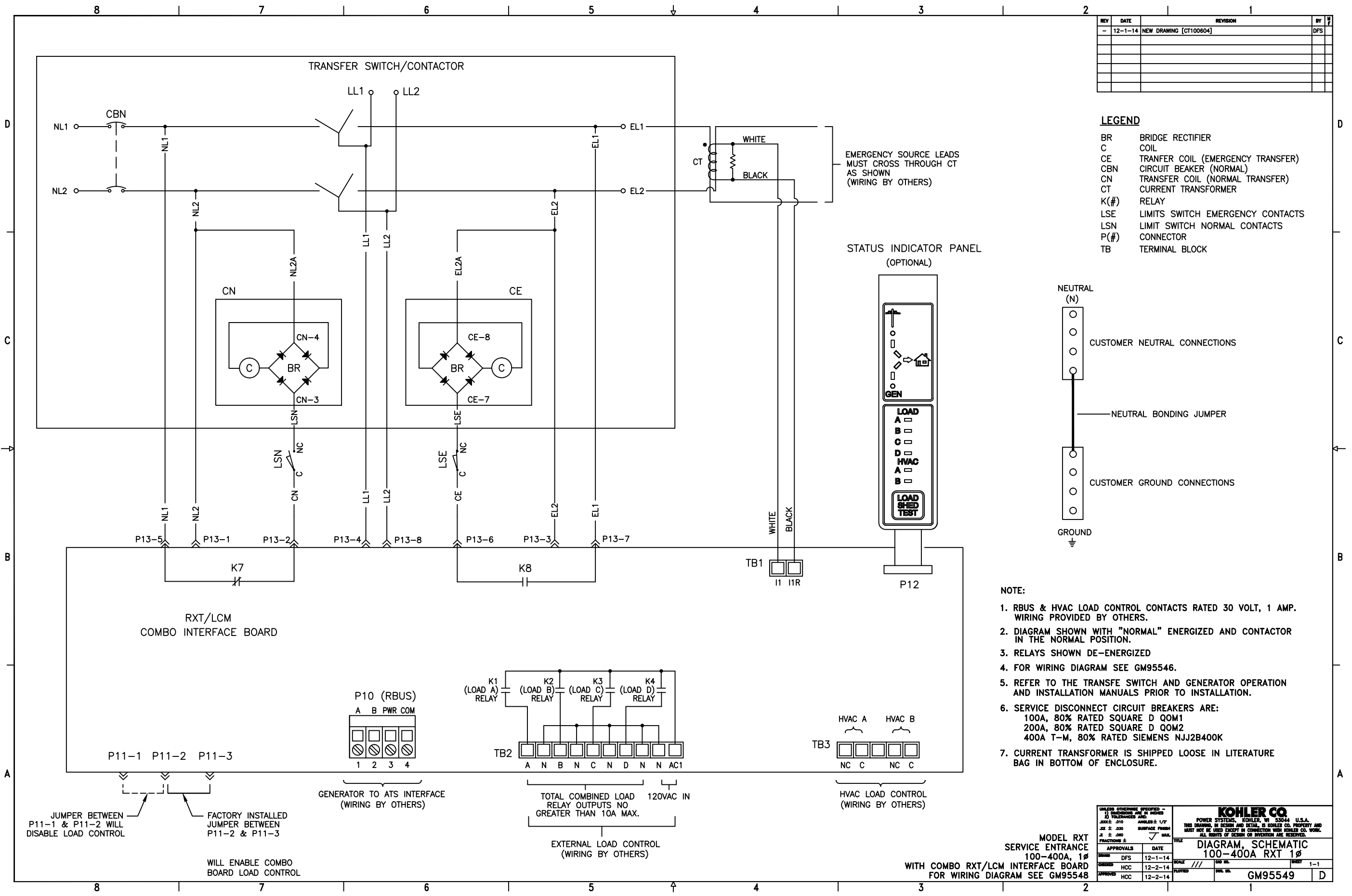


REV	DATE	REVISION	BY
-	12-1-14	NEW DRAWING [CT100604]	DFS

LEGEND

BR	BRIDGE RECTIFIER
C	COIL
CE	TRANSFER COIL (EMERGENCY TRANSFER)
CBN	CIRCUIT BEAKER (NORMAL)
CN	TRANSFER COIL (NORMAL TRANSFER)
CT	CURRENT TRANSFORMER
K(#)	RELAY
LSE	LIMITS SWITCH EMERGENCY CONTACTS
LSN	LIMIT SWITCH NORMAL CONTACTS
P(#)	CONNECTOR
TB	TERMINAL BLOCK



- NOTE:**
1. RBUS & HVAC LOAD CONTROL CONTACTS RATED 30 VOLT, 1 AMP. WIRING PROVIDED BY OTHERS.
 2. DIAGRAM SHOWN WITH "NORMAL" ENERGIZED AND CONTACTOR IN THE NORMAL POSITION.
 3. RELAYS SHOWN DE-ENERGIZED
 4. FOR WIRING DIAGRAM SEE GM95546.
 5. REFER TO THE TRANSFER SWITCH AND GENERATOR OPERATION AND INSTALLATION MANUALS PRIOR TO INSTALLATION.
 6. SERVICE DISCONNECT CIRCUIT BREAKERS ARE:
 100A, 80% RATED SQUARE D QOM1
 200A, 80% RATED SQUARE D QOM2
 400A T-M, 80% RATED SIEMENS NJ2B400K
 7. CURRENT TRANSFORMER IS SHIPPED LOOSE IN LITERATURE BAG IN BOTTOM OF ENCLOSURE.

UNLESS OTHERWISE SPECIFIED - 3) DIMENSIONS ARE IN INCHES TOLERANCES ARE: FRACTIONS ±		KOHLER CO. POWER SYSTEMS, KOHLER, WI 53044 U.S.A. THIS DRAWING, IN SCHEMATIC AND DETAIL, IS KOHLER CO. PROPERTY AND MUST NOT BE USED EXCEPT IN CONNECTION WITH KOHLER CO. WORK. ALL RIGHTS OF DESIGN OR INVENTION ARE RESERVED.	
MODEL RXT SERVICE ENTRANCE 100-400A, 1Ø WITH COMBO RXT/LCM INTERFACE BOARD FOR WIRING DIAGRAM SEE GM95548	TITLE DIAGRAM, SCHEMATIC 100-400A RXT 1Ø	SCALE SHEET 1-1	SHEET NO. GM95549 D
APPROVALS DFS 12-1-14 HCC 12-2-14 HCC 12-2-14	DATE 12-1-14 12-2-14 12-2-14	DATE 12-1-14 12-2-14 12-2-14	SHEET 1-1

JUMPER BETWEEN P11-1 & P11-2 WILL DISABLE LOAD CONTROL

FACTORY INSTALLED JUMPER BETWEEN P11-2 & P11-3 WILL ENABLE COMBO BOARD LOAD CONTROL

GENERATOR TO ATS INTERFACE (WIRING BY OTHERS)

TOTAL COMBINED LOAD RELAY OUTPUTS NO GREATER THAN 10A MAX. 120VAC IN

EXTERNAL LOAD CONTROL (WIRING BY OTHERS)

HVAC A HVAC B

TB3 NC C NC C