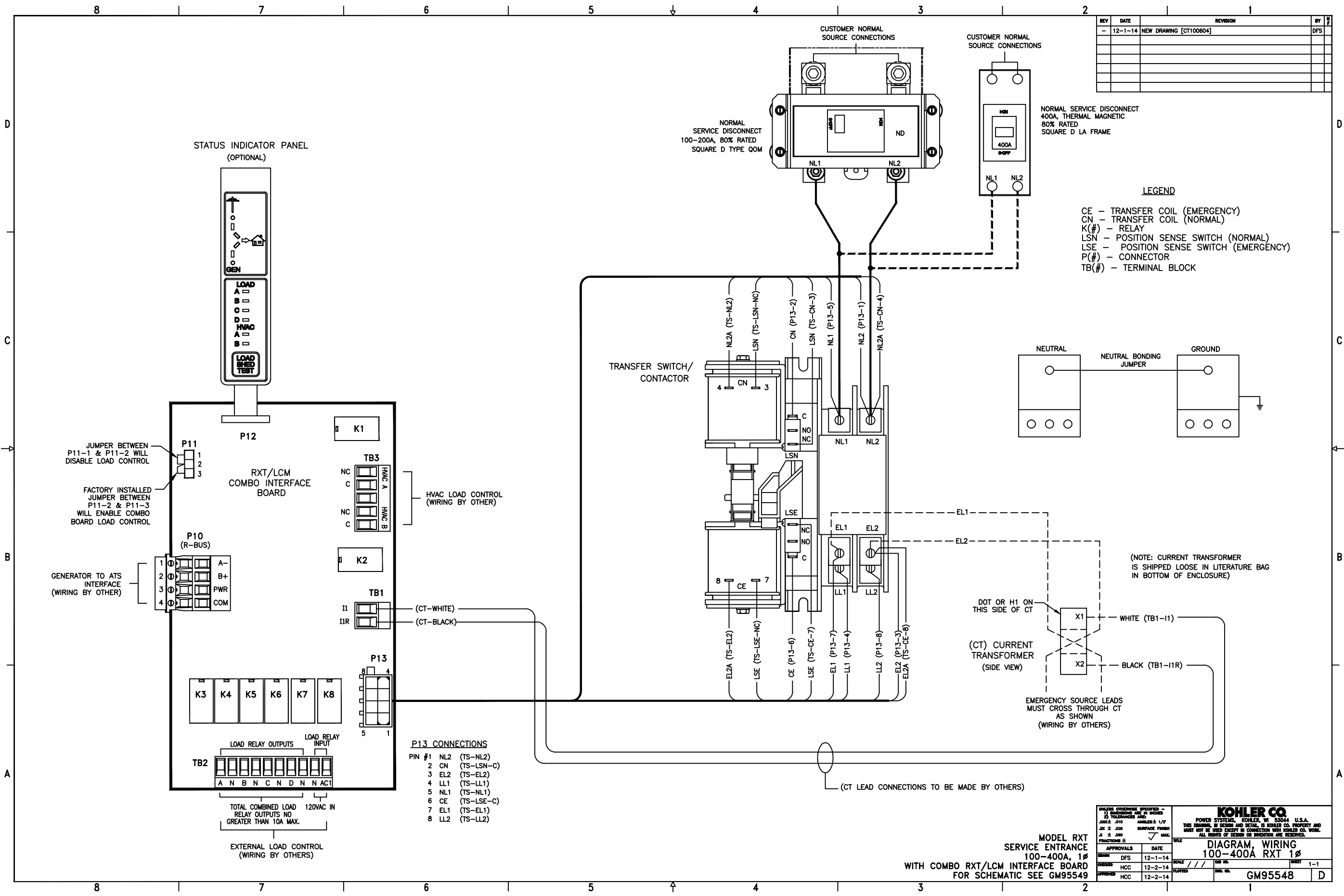


REV	DATE	REVISION	BY
-	12-1-14	NEW DRAWING [CT100604]	DFS

NORMAL SERVICE DISCONNECT
400A, THERMAL MAGNETIC
80% RATED
SQUARE D LA FRAME

LEGEND

- CE - TRANSFER COIL (EMERGENCY)
- CN - TRANSFER COIL (NORMAL)
- K(#) - RELAY
- LSN - POSITION SENSE SWITCH (NORMAL)
- LSE - POSITION SENSE SWITCH (EMERGENCY)
- P(#) - CONNECTOR
- TB(#) - TERMINAL BLOCK



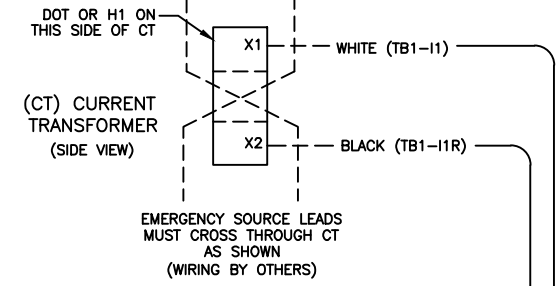
JUMPER BETWEEN P11-1 & P11-2 WILL DISABLE LOAD CONTROL

FACTORY INSTALLED JUMPER BETWEEN P11-2 & P11-3 WILL ENABLE COMBO BOARD LOAD CONTROL

GENERATOR TO ATS INTERFACE (WIRING BY OTHER)

- P13 CONNECTIONS**
- PIN #1 NL2 (TS-NL2)
 - 2 CN (TS-LSN-C)
 - 3 EL2 (TS-EL2)
 - 4 LL1 (TS-LL1)
 - 5 NL1 (TS-NL1)
 - 6 CE (TS-LSE-C)
 - 7 EL1 (TS-EL1)
 - 8 LL2 (TS-LL2)

(NOTE: CURRENT TRANSFORMER IS SHIPPED LOOSE IN LITERATURE BAG IN BOTTOM OF ENCLOSURE)



(CT LEAD CONNECTIONS TO BE MADE BY OTHERS)

TOTAL COMBINED LOAD RELAY OUTPUTS NO GREATER THAN 10A MAX.

EXTERNAL LOAD CONTROL (WIRING BY OTHERS)

MODEL RXT SERVICE ENTRANCE 100-400A, 1Ø WITH COMBO RXT/LCM INTERFACE BOARD FOR SCHEMATIC SEE GM95549

UNLESS OTHERWISE SPECIFIED - 3/16 DIMENSIONS ARE IN INCHES TOLERANCES ARE:	POWER SYSTEMS, KOHLER, WI 53044 U.S.A.
SIZE: .010	ANNEALS: 1/2"
FIN: ± .005	SURFACE FINISH: 32 ± .000
FRACTIONS: ±	✓ MAX.

APPROVALS	DATE	SCALE	SHEET
DFS	12-1-14	1-1	1-1
HCC	12-2-14		
HCC	12-2-14		

KOHLER CO.
DIAGRAM, WIRING 100-400A RXT 1Ø
GM95548