

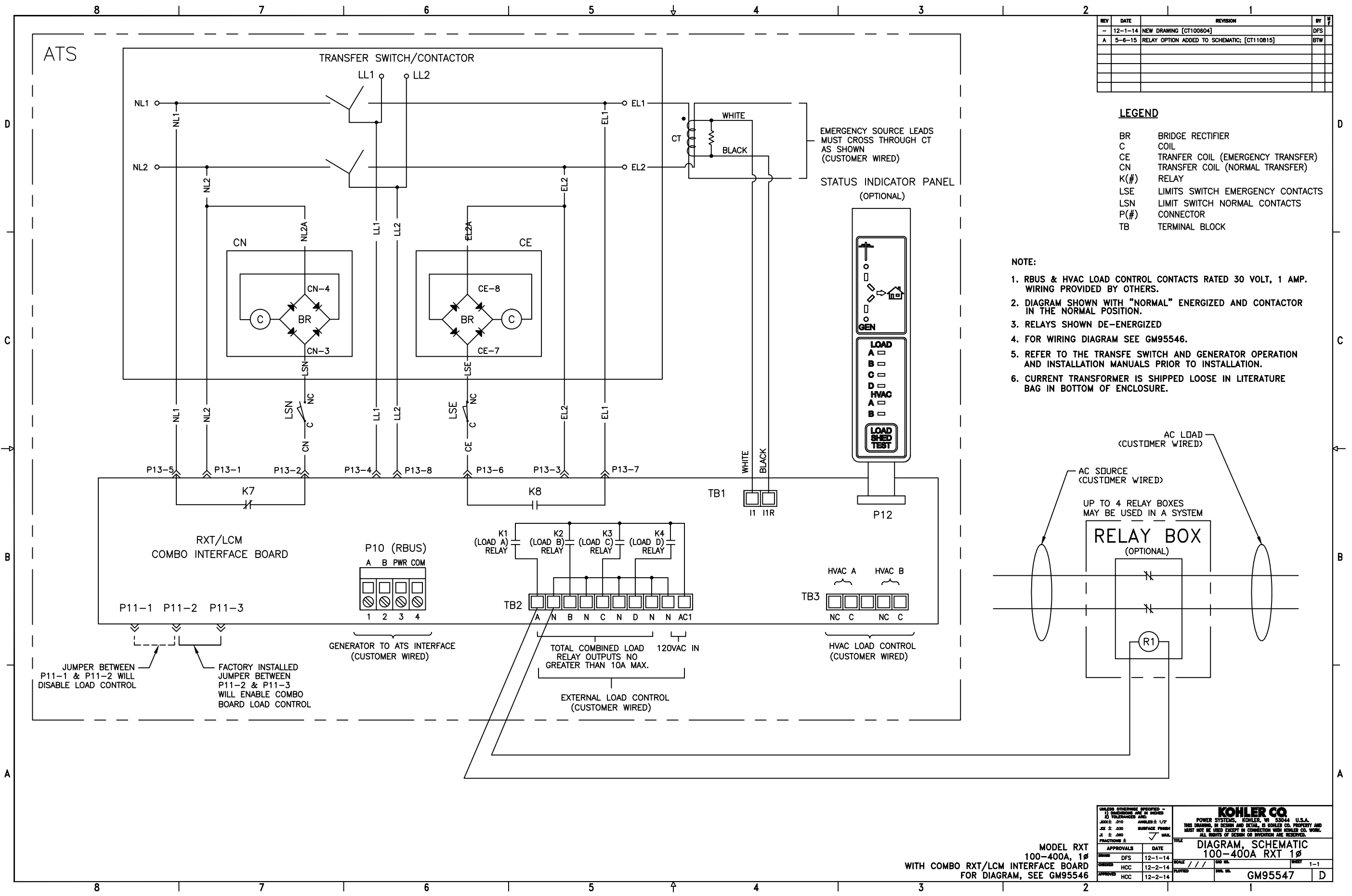
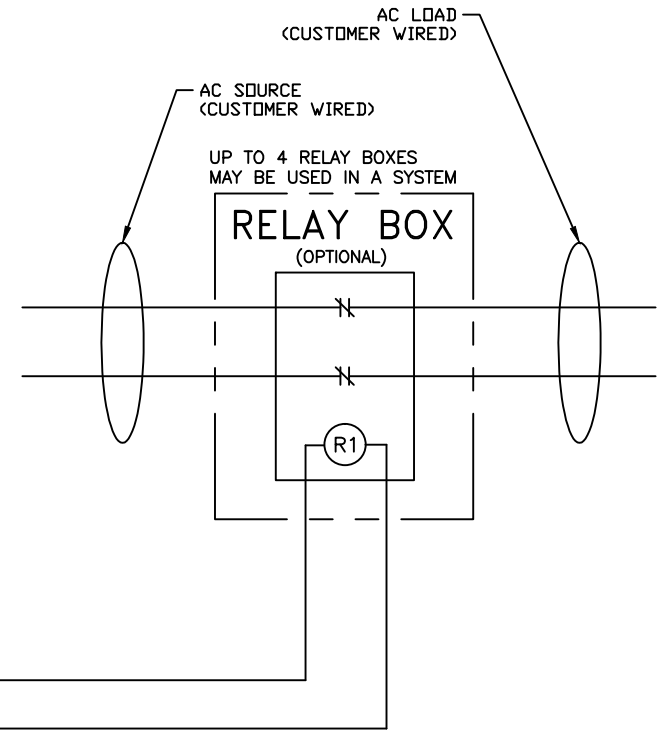
REV	DATE	REVISION	BY
-	12-1-14	NEW DRAWING [CT100804]	DFS
A	5-6-15	RELAY OPTION ADDED TO SCHEMATIC; [CT110815]	BTW

**LEGEND**

- BR BRIDGE RECTIFIER
- C COIL
- CE TRANSFER COIL (EMERGENCY TRANSFER)
- CN TRANSFER COIL (NORMAL TRANSFER)
- K(#) RELAY
- LSE LIMITS SWITCH EMERGENCY CONTACTS
- LSN LIMIT SWITCH NORMAL CONTACTS
- P(#) CONNECTOR
- TB TERMINAL BLOCK

**NOTE:**

1. RBUS & HVAC LOAD CONTROL CONTACTS RATED 30 VOLT, 1 AMP. WIRING PROVIDED BY OTHERS.
2. DIAGRAM SHOWN WITH "NORMAL" ENERGIZED AND CONTACTOR IN THE NORMAL POSITION.
3. RELAYS SHOWN DE-ENERGIZED
4. FOR WIRING DIAGRAM SEE GM95546.
5. REFER TO THE TRANSFER SWITCH AND GENERATOR OPERATION AND INSTALLATION MANUALS PRIOR TO INSTALLATION.
6. CURRENT TRANSFORMER IS SHIPPED LOOSE IN LITERATURE BAG IN BOTTOM OF ENCLOSURE.



UNLESS OTHERWISE SPECIFIED -		KOHLER CO.	
1) DIMENSIONS ARE IN INCHES	2) TOLERANCES ARE:	POWER SYSTEMS, KOHLER, WI 53044 U.S.A.	THIS DRAWING, IN SCHEMATIC AND DETAIL, IS KOHLER CO. PROPERTY AND MUST NOT BE USED EXCEPT IN CONNECTION WITH KOHLER CO. WORK. ALL RIGHTS OF DESIGN OR INVENTION ARE RESERVED.
SIZE: .010	ANNULES: 1/2"	TITLE: <b>DIAGRAM, SCHEMATIC</b>	
FIN: 2 .000	SURFACE FINISH: ✓ MAX.	MODEL: <b>100-400A RXT 1Ø</b>	
FRACTIONS: ±		SCALE: / / /	SHEET: 1-1
APPROVALS	DATE	DRW. NO.	
DESIGN: DFS	12-1-14	GM95547	
CHECKED: HCC	12-2-14		
APPROVED: HCC	12-2-14		

MODEL RXT  
100-400A, 1Ø  
WITH COMBO RXT/LCM INTERFACE BOARD  
FOR DIAGRAM, SEE GM95546