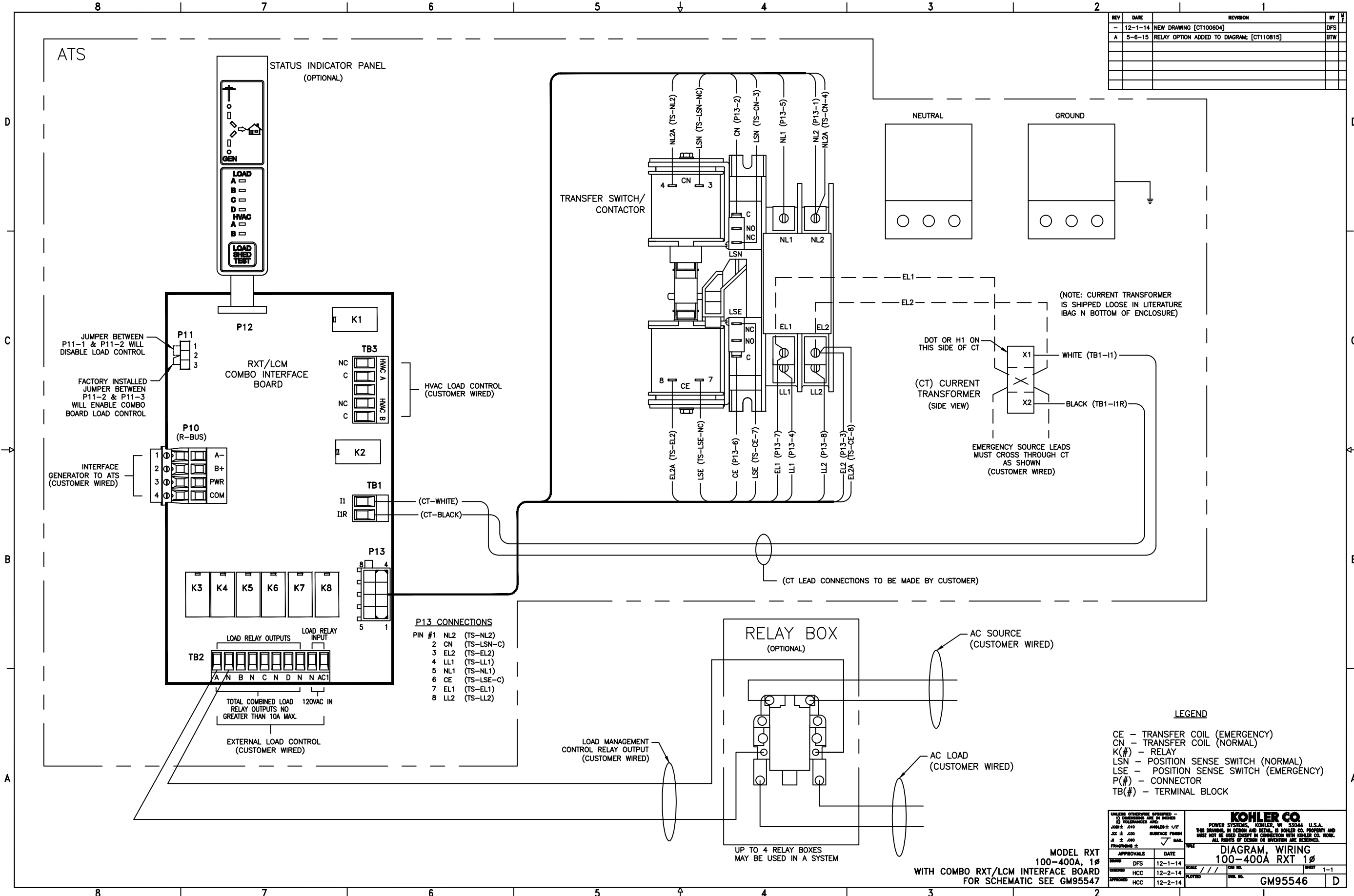


REV	DATE	REVISION	BY
-	12-1-14	NEW DRAWING [CT100604]	DFS
A	5-6-15	RELAY OPTION ADDED TO DIAGRAM; [CT110815]	BTW



P13 CONNECTIONS

PIN #	WIRE	DESCRIPTION
1	NL2	(TS-NL2)
2	CN	(TS-LSN-C)
3	EL2	(TS-EL2)
4	LL1	(TS-LL1)
5	NL1	(TS-NL1)
6	CE	(TS-LSE-C)
7	EL1	(TS-EL1)
8	LL2	(TS-LL2)

LEGEND

- CE - TRANSFER COIL (EMERGENCY)
- CN - TRANSFER COIL (NORMAL)
- K(#)- RELAY
- LSN - POSITION SENSE SWITCH (NORMAL)
- LSE - POSITION SENSE SWITCH (EMERGENCY)
- P(#)- CONNECTOR
- TB(#)- TERMINAL BLOCK

APPROVALS		DATE	SCALE	SHEET
DESIGNED	DFS	12-1-14	1/1	1-1
CHECKED	HCC	12-2-14		
APPROVED	HCC	12-2-14		

UNLESS OTHERWISE SPECIFIED - DIMENSIONS ARE IN INCHES TOLERANCES ARE: FRACTIONS ± SURFACE FINISH ±

KOHLER CO.
POWER SYSTEMS, KOHLER, WI 53044 U.S.A.
THIS DRAWING, IN DESIGN AND DETAIL, IS KOHLER CO. PROPERTY AND MUST NOT BE USED EXCEPT IN CONNECTION WITH KOHLER CO. WORK. ALL RIGHTS OF DESIGN OR INVENTION ARE RESERVED.

MODEL RXT 100-400A, 1Ø WITH COMBO RXT/LCM INTERFACE BOARD FOR SCHEMATIC SEE GM95547

DIAGRAM, WIRING 100-400A RXT 1Ø

GM95546