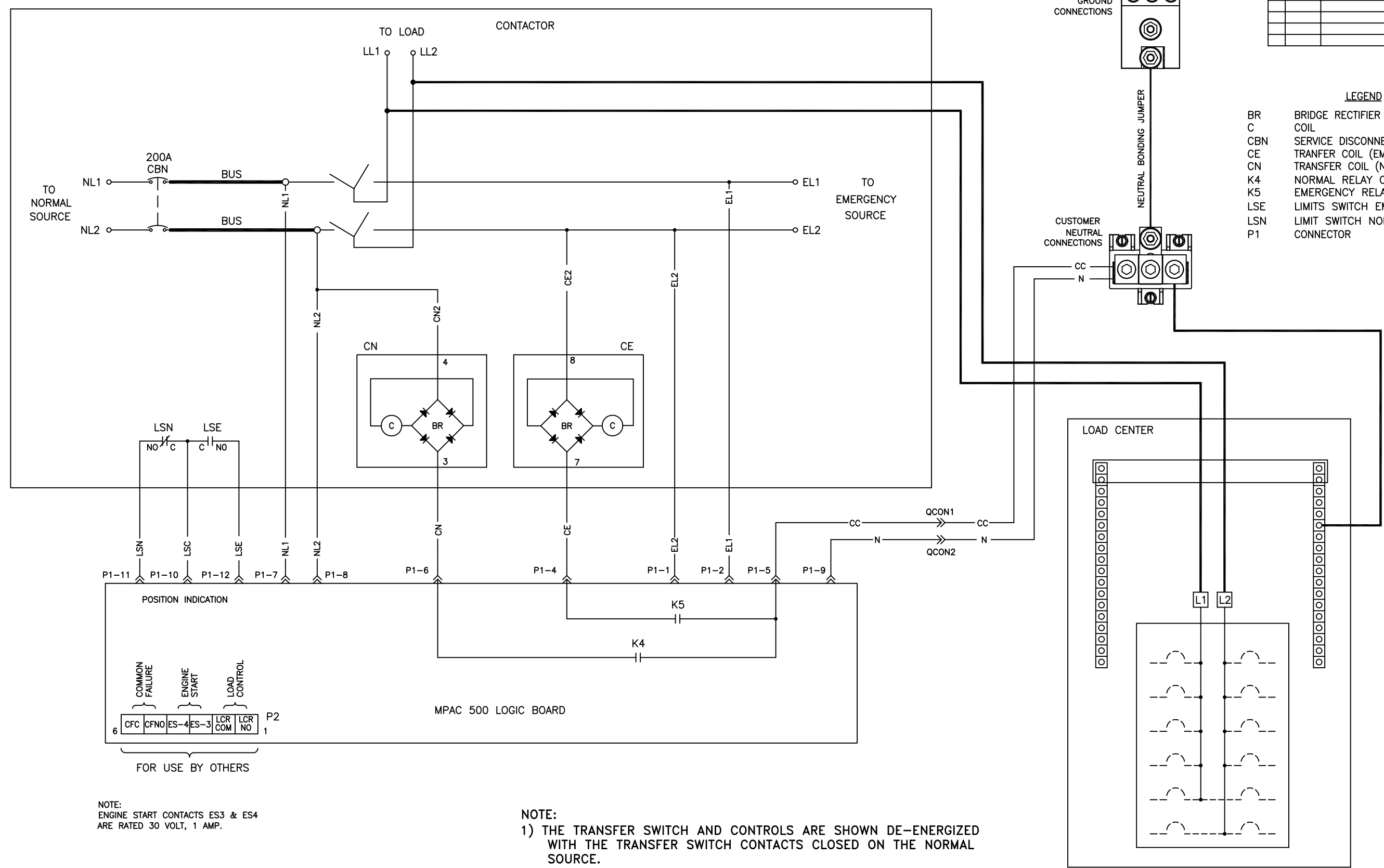


REV	DATE	REVISION	BY	APP
-	8-30-11	NEW DRAWING [91596]	DFS	
A	4-22-13	NEW DRAWING [CT31187]	BTW	

**LEGEND**

- BR BRIDGE RECTIFIER
- C COIL
- CBN SERVICE DISCONNECT NORMAL
- CE TRANSFER COIL (EMERGENCY TRANSFER)
- CN TRANSFER COIL (NORMAL TRANSFER)
- K4 NORMAL RELAY CONTACTS
- K5 EMERGENCY RELAY CONTACTS
- LSE LIMITS SWITCH EMERGENCY CONTACTS
- LSN LIMIT SWITCH NORMAL CONTACTS
- P1 CONNECTOR



NOTE:  
ENGINE START CONTACTS ES3 & ES4  
ARE RATED 30 VOLT, 1 AMP.

- NOTE:
- 1) THE TRANSFER SWITCH AND CONTROLS ARE SHOWN DE-ENERGIZED WITH THE TRANSFER SWITCH CONTACTS CLOSED ON THE NORMAL SOURCE.
  - 2) REFER TO THE TRANSFER SWITCH AND GENERATOR OPERATION AND INSTALLATION MANUALS PRIOR TO INSTALLATION.
  - 3) NORMAL SERVICE DISCONNECT CIRCUIT BREAKER IS A SQUARE D QOM2 TYPE, 200A, 80% RATED.

UNLESS OTHERWISE SPECIFIED -  
1) DIMENSIONS ARE IN INCHES  
2) TOLERANCES ARE:  
.000 ± .010 ANGLES ± 1/2°  
.001 ± .030 SURFACE FINISH  
X ± .080 ✓ MAX.  
FRACTIONS ±

**KOHLER CO.**  
POWER SYSTEMS, KOHLER, WI 53044 U.S.A.  
THIS DRAWING, IN DESIGN AND DETAIL, IS KOHLER CO. PROPERTY AND MUST NOT BE USED EXCEPT IN CONNECTION WITH KOHLER CO. WORK. ALL RIGHTS OF DESIGN OR INVENTION ARE RESERVED.

APPROVALS		DATE		TITLE	
DRAWN	DFS	8-30-11		DIAGRAM, SCHEMATIC	
CHECKED	MTL	8-30-11		SCALE	///
APPROVED	DFS	8-30-11		PLOTTED	

GM83845

MODEL R  
MPAC 500 LOGIC  
200A SERVICE ENTRANCE  
WITH LOAD CENTER  
FOR WIRING DIAGRAM SEE GM83844